



WESTERDALE DRIVE, GU16

KIER CHARLES

SURREY • BERKSHIRE • HANTS

WESTERDALE DRIVE, GU16

VIEW WITH KIER.

A FAMILY HOME OFFERING EXCELLENT SCHOOL CATCHMENT!

Arranged over three floors, this family home offers over 2,500 sq ft and is positioned in a quiet cul de sac location.

Benefitting from a conservatory, spacious kitchen/dining room, living room with a bay window, 20ft garage and WC to the ground floor.

To the first floor, there is a master bedroom, ensuite and dressing room, guest bedroom with ensuite and a further two bedrooms and family bathroom.

The second floor enjoys 21ft by 21 ft L shape Bedroom/office offering a range of flexibility for any buyer.

The rear garden offers excellent privacy and glorious views, a large patio and there is side access to the driveway.

- **RAVENSCLOTE & TOMLINSCLOTE SCHOOL CATCHMENT**
- **CLOSE TO SHOPS**
- **FLEXIBLE LIVING ACCOMODATION**
- **HIGHLY SOUGHT AFTER CUL DE SAC**
- **OVER 2,500 SQ FT**
- **CONSERVATORY**

PROPERTY INFORMATION

Postcode | **GU16 9RB**
Tenure | **Freehold approximately 0years**
Price | **£795,000**
Viewing | **By appointment with Kier Charles**

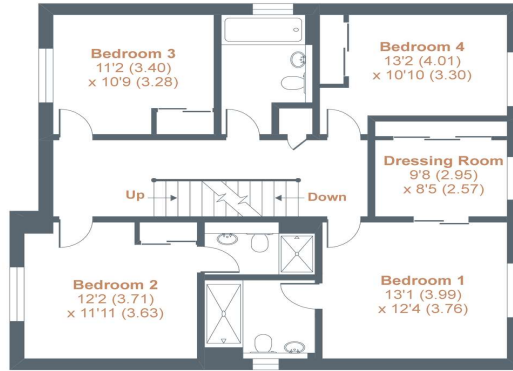




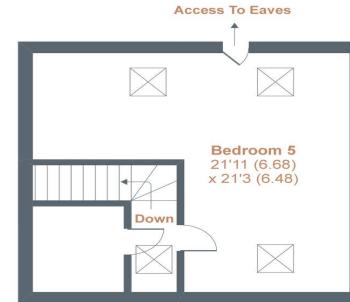
Westerdale Drive, Frimley, Camberley, GU16

Approximate Area = 2598 sq ft / 241.4 sq m (includes garage)

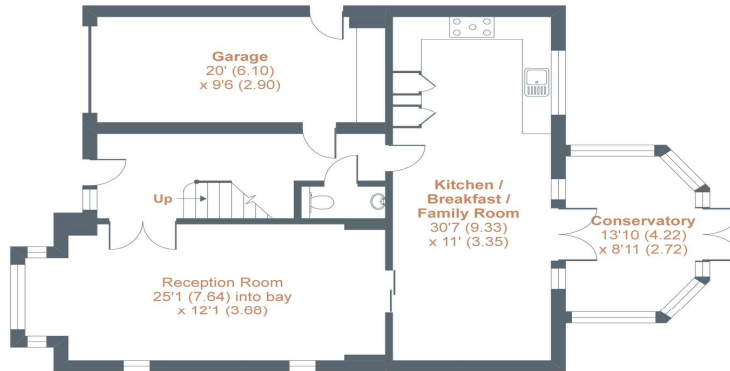
For identification only - Not to scale



FIRST FLOOR



SECOND FLOOR



GROUND FLOOR



Floor plan produced in accordance with RICS Property Measurement Standards incorporating International Property Measurement Standards (IPMS2 Residential). © nichecom 2020. Produced for Kier Charles Property Services Limited. REF: 648303



CONTACT INFORMATION:

Surrey: 01276 949789

Berkshire: 01344 513789

Hampshire: 01252 213789

info@kiercharles.co.uk

KIER CHARLES

SURREY • BERKSHIRE • HANTS