



OCEANA CRESCENT, RG22

**KIER CHARLES**

SURREY • BERKSHIRE • HANTS

## OCEANA CRESCENT, RG22

UNDER OFFER WITH KIER CHARLES HAMPSHIRE.

This wonderful four bedroom detached home is in excellent condition throughout having undergone many improvements from the current owners.

Positioned in a quiet cul-de-sac offering a wealth of space, including entrance hallwy leading, downstairs w.c, living room dining room a recently re-fitted open plan kitchen/breakfast room with a snug and utility.

To the first floor, the master bedroom benefits from an en-suite shower room, a further three double bedrooms and a family bathroom.

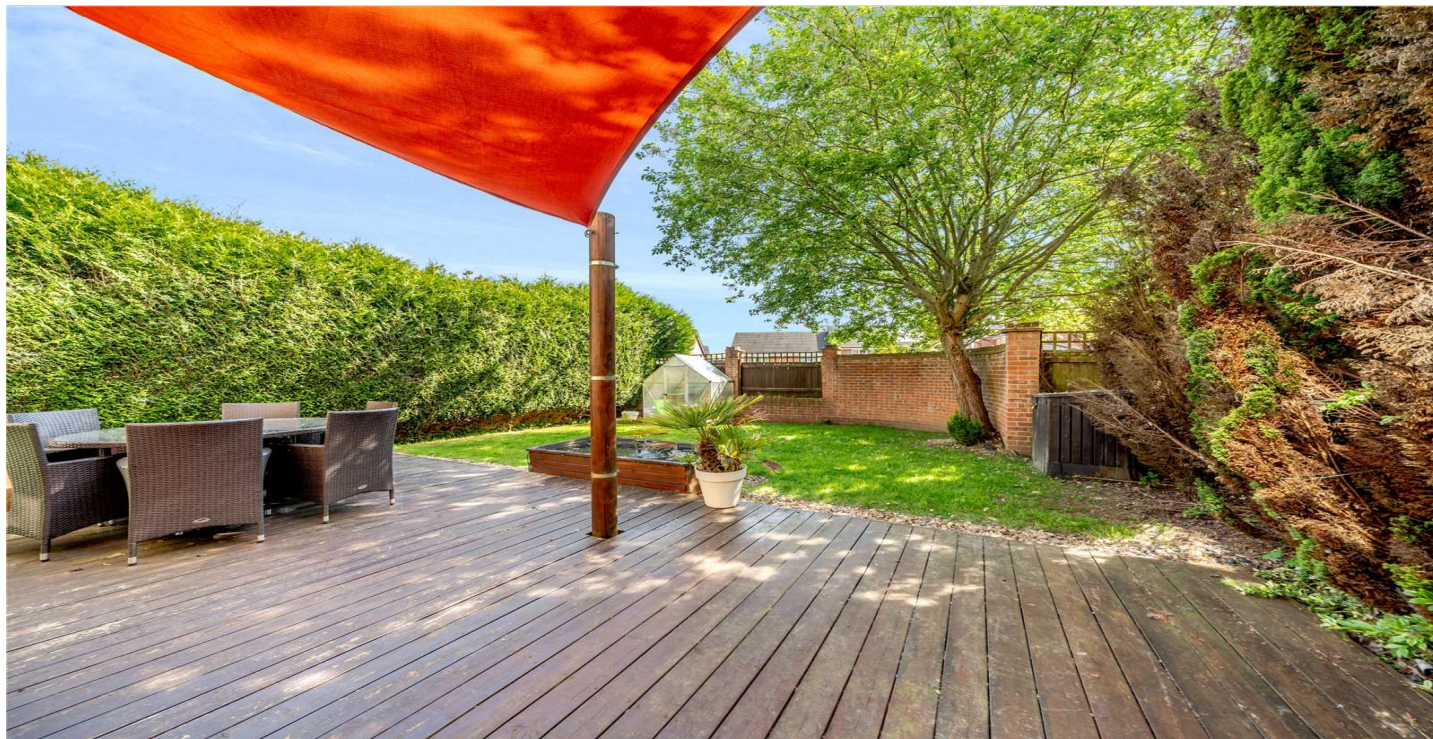
The rear garden offers a wealth of privacy with a large patio area the perfect spot for al fresco dining and the remainder laid to lawn with side access leading to the front with driveway parking and access to the garage.

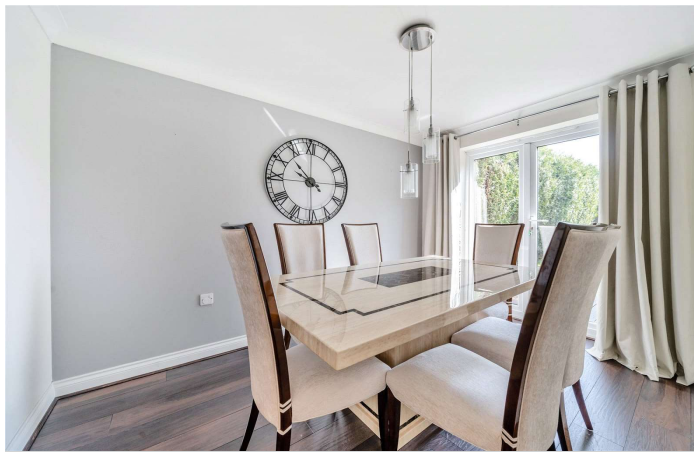
To fully appreciate the space, location and condition a personal tour with Kier Charles is highly recommended.

- **FOUR BEDROOMS**
- **TWO BATHROOMS**
- **THREE RECEPTION ROOMS**
- **OPEN PLAN KITCHEN/DINING ROOM**
- **SOUGHT AFTER SCHOOLS NEARBY**
- **UTILITY ROOM**
- **EXCELLENT COMMUTER LINKS**
- **IMMACULATE CONDITION THROUGHOUT**
- **GARAGE AND DRIVEWAY**
- **VENDOR SUITED**

### PROPERTY INFORMATION

Postcode | **RG22 4FE**  
Tenure | **Freehold**  
Price | **£535,000**  
Viewing | **By appointment with Kier Charles**

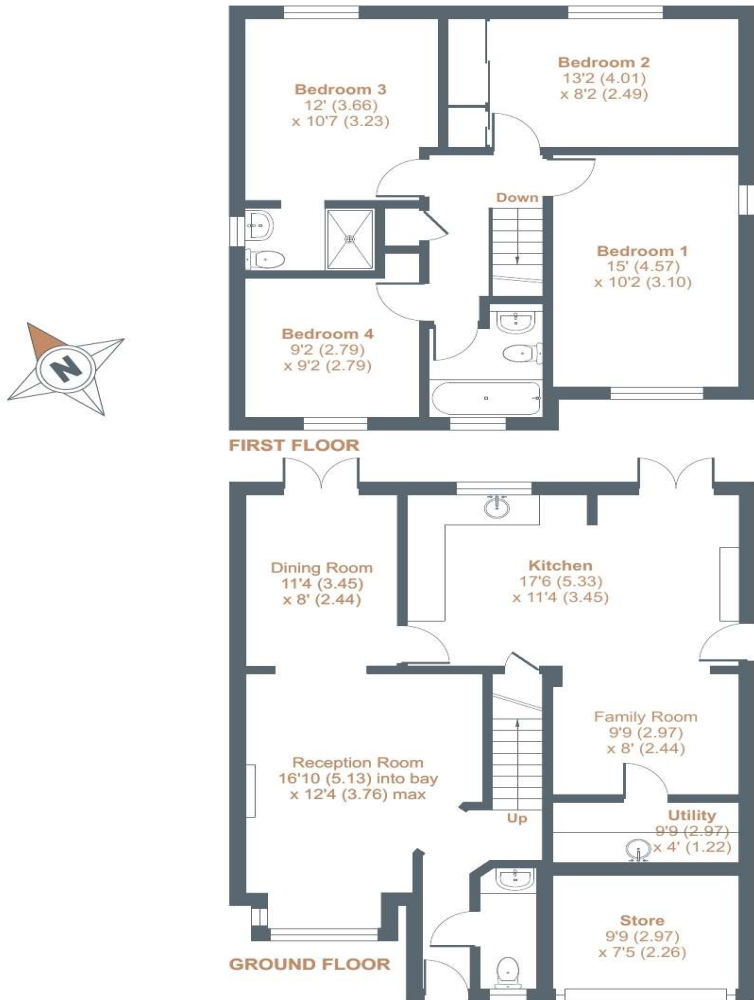




# Oceana Crescent, Beggarwood, Basingstoke, RG22

Approximate Internal Area = 1379 sq ft / 128.1 sq m  
 Approximate External Area = 1566 sq ft / 145.4 sq m  
 Garage = 74 sq ft / 6.8 sq m  
 Total Internal Area = 1453 sq ft / 134.9 sq m  
 Total External Area = 1663 sq ft / 154.4 sq m

For identification only - Not to scale



Floor plan produced in accordance with RICS Property Measurement Standards incorporating International Property Measurement Standards (IPMS2 Residential). © nchecom 2024. Produced for Kier Charles Property Services Limited. REF: 1126298

**KIER CHARLES**  
 SURREY • BERKSHIRE • HANTS • LONDON

## CONTACT INFORMATION:

Surrey: 01276 949789  
 Berkshire: 01344 513789  
 Hampshire: 01252 213789

[info@kiercharles.co.uk](mailto:info@kiercharles.co.uk)

# KIER CHARLES

SURREY • BERKSHIRE • HANTS