



PLOUGH HOUSE, READING ROAD, GU46

KIER CHARLES

SURREY • BERKSHIRE • HANTS

PLOUGH HOUSE, READING ROAD, GU46

VIEW WITH KIER CHARLES HAMPSHIRE.

A fine character home positioned in a non-estate location on the Yateley/Eversley borders.

This stunning home has been refurbished and now offers a modern layout with stylish fixtures and fittings.

This fine home is approached via a five bar gate and offers ample shingle driveway parking.

The welcoming entrance hall leads to 19ft reception room, dining room, 24ft kitchen/breakfast room. There is also a 19ft family room/bedroom with ensuite, study, utility, 43 ft triple length garage to the ground floor.

The first floor offers master bedroom with ensuite and storage, complimented by a further three bedrooms and family bathroom.

The rear garden has been meticulously landscaped including pergola, patio areas, lighting system and summer house with power and light.

To fully appreciate the space, location and condition a personal tour is highly recommended.

- **FOUR/FIVE BEDROOMS**
- **THREE BATHROOMS**
- **THREE/FOUR RECEPTION ROOMS**
- **REFURBISHED THROUGHOUT**
- **STUNNING LOCATION**
- **43 FT GARAGE**
- **LANDSCAPED REAR GARDEN**
- **EXCELLENT SCHOOL CATCHMENT**
- **CHARACTER FEATURES**
- **GATED AND AMPLE PARKING**

PROPERTY INFORMATION

Postcode | **GU46 7RN**
Tenure | **Freehold**
Price | **£1,000,000**
Viewing | **By appointment with Kier Charles**





Reading Road, Yateley, GU46

Approximate External Area = 2751 sq ft / 255.5 sq m

Approximate Internal Area = 2204 sq ft / 204.7 sq m

Garage = 496 sq ft / 46 sq m

Outbuilding = 51 sq ft / 4.7 sq m

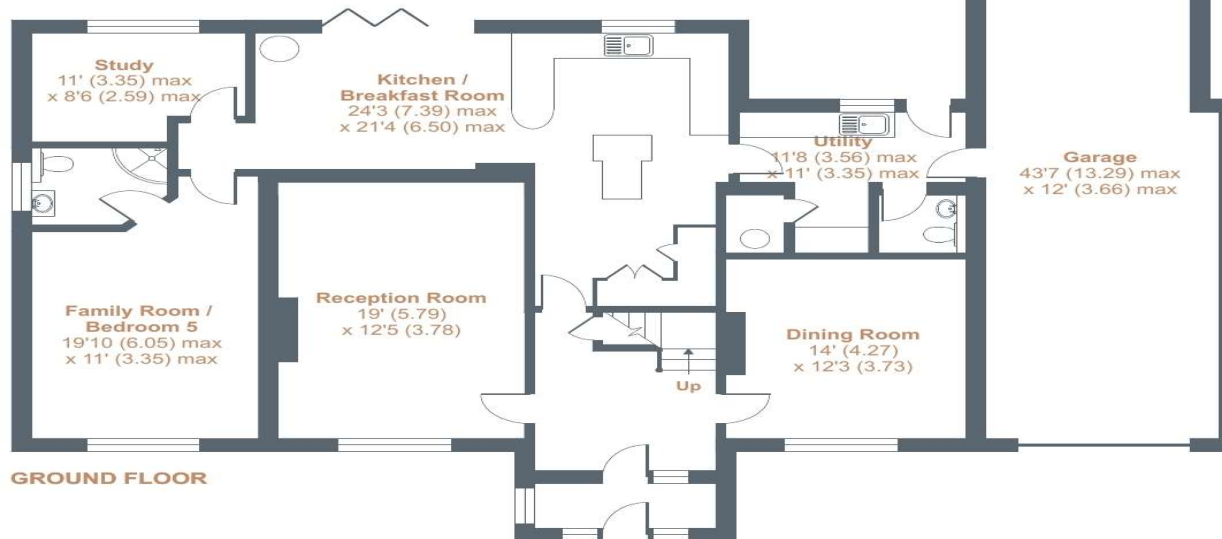
For identification only - Not to scale



OUTBUILDING



FIRST FLOOR



Floor plan produced in accordance with RICS Property Measurement Standards incorporating International Property Measurement Standards (IPMS2 Residential). © nichecom 2024. Produced for Kier Charles Property Services Limited. REF: 1076349

KIER CHARLES
PROPERTY SERVICES

CONTACT INFORMATION:

Surrey: 01276 949789

Berkshire: 01344 513789

Hampshire: 01252 213789

info@kiercharles.co.uk

KIER CHARLES

SURREY • BERKSHIRE • HANTS