



RUSSELL HOUSE, LONDON ROAD, RG42

**KIER CHARLES**

SURREY • BERKSHIRE • HANTS

## RUSSELL HOUSE, LONDON ROAD, RG42

AN OUTSTANDING PROPERTY BUILT BY VANDERBILT HOMES TO AN EXCEPTIONAL STANDARD.

This wonderful home is deceptively spacious offering 1,712 sq ft over three floors and enjoys being situated in a small cul de sac location.

To the ground floor the property boasts a large entrance hall with cloaks cupboard, WC, 16ft luxury fitted kitchen/breakfast room, 18ft living/dining room with bifolding doors overlooking the garden.

To the first floor there is a master bedroom with dressing room and ensuite, a further two bedrooms and family bathroom.

The top floor enjoys a 17ft bedroom with far reaching views and ensuite shower room.

The rear garden is south facing and predominantly laid to lawn, a good degree of privacy and rear access to a drive and car port.

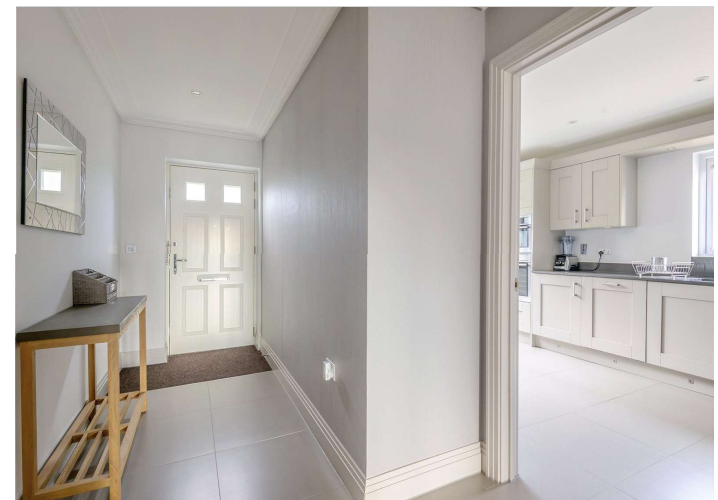
To fully appreciate the space, condition and location of this property a personal tour with Kier is recommended.

- **FOUR BEDROOMS**
- **THREE BATHROOMS**
- **1,712 SQ FT OVER THREE FLOORS**
- **CAR PORT AND PARKING AT THE REAR**
- **SOUTH FACING REAR GARDEN**
- **EXCELLENT SPECIFICATION THROUGHOUT**
- **WONDERFUL SCHOOL CATCHMENT**
- **GREAT COMMUTING LINKS**

### PROPERTY INFORMATION

Postcode | **RG42 4AA**  
Tenure | **Freehold**  
Price | **£675,000**  
Viewing | **By appointment with Kier Charles**





# London Road, Binfield, Bracknell, RG42

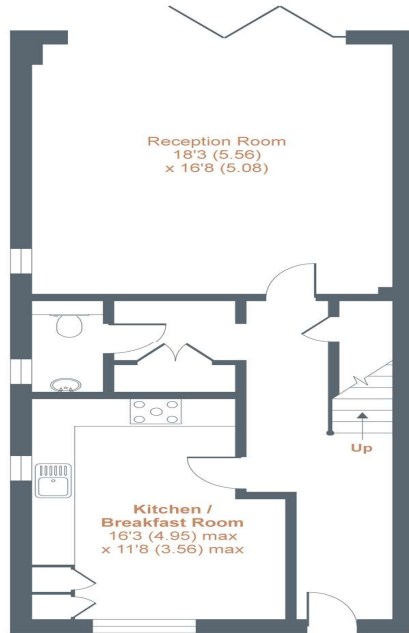
Approximate Area = 1685 sq ft / 156.5 sq m

Limited Use Area(s) = 27 sq ft / 2.5 sq m

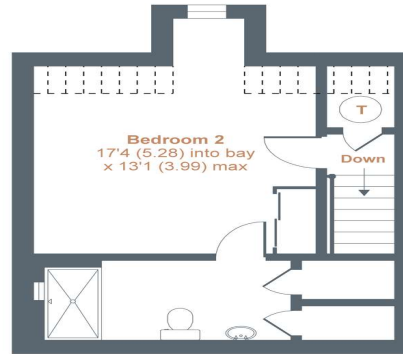
Total = 1712 sq ft / 159 sq m

For identification only - Not to scale

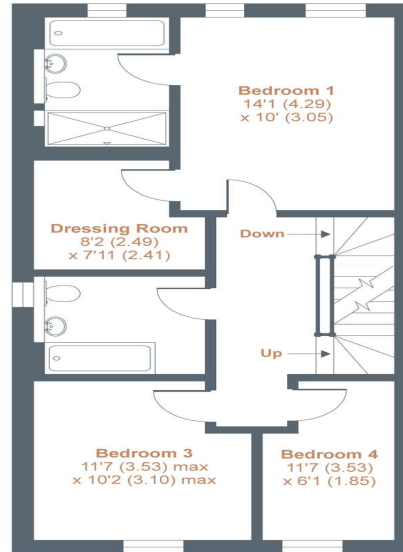
Denotes restricted head height



GROUND FLOOR



SECOND FLOOR



FIRST FLOOR



Floor plan produced in accordance with RICS Property Measurement Standards incorporating International Property Measurement Standards (IPMS2 Residential). © nichecom 2021. Produced for Kier Charles Property Services Limited. REF: 782625



## CONTACT INFORMATION:

Surrey: 01276 949789

Berkshire: 01344 513789

Hampshire: 01252 213789

[info@kiercharles.co.uk](mailto:info@kiercharles.co.uk)

# KIER CHARLES

SURREY • BERKSHIRE • HANTS