



ORIENTATION

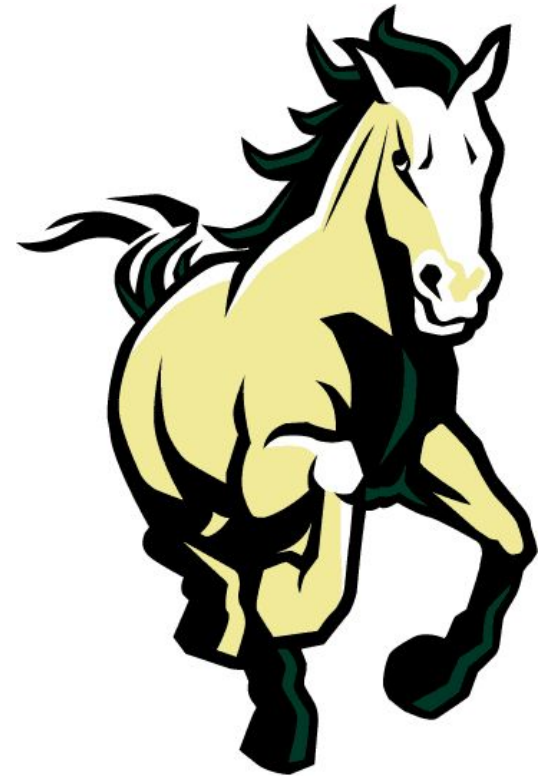


WELCOME!

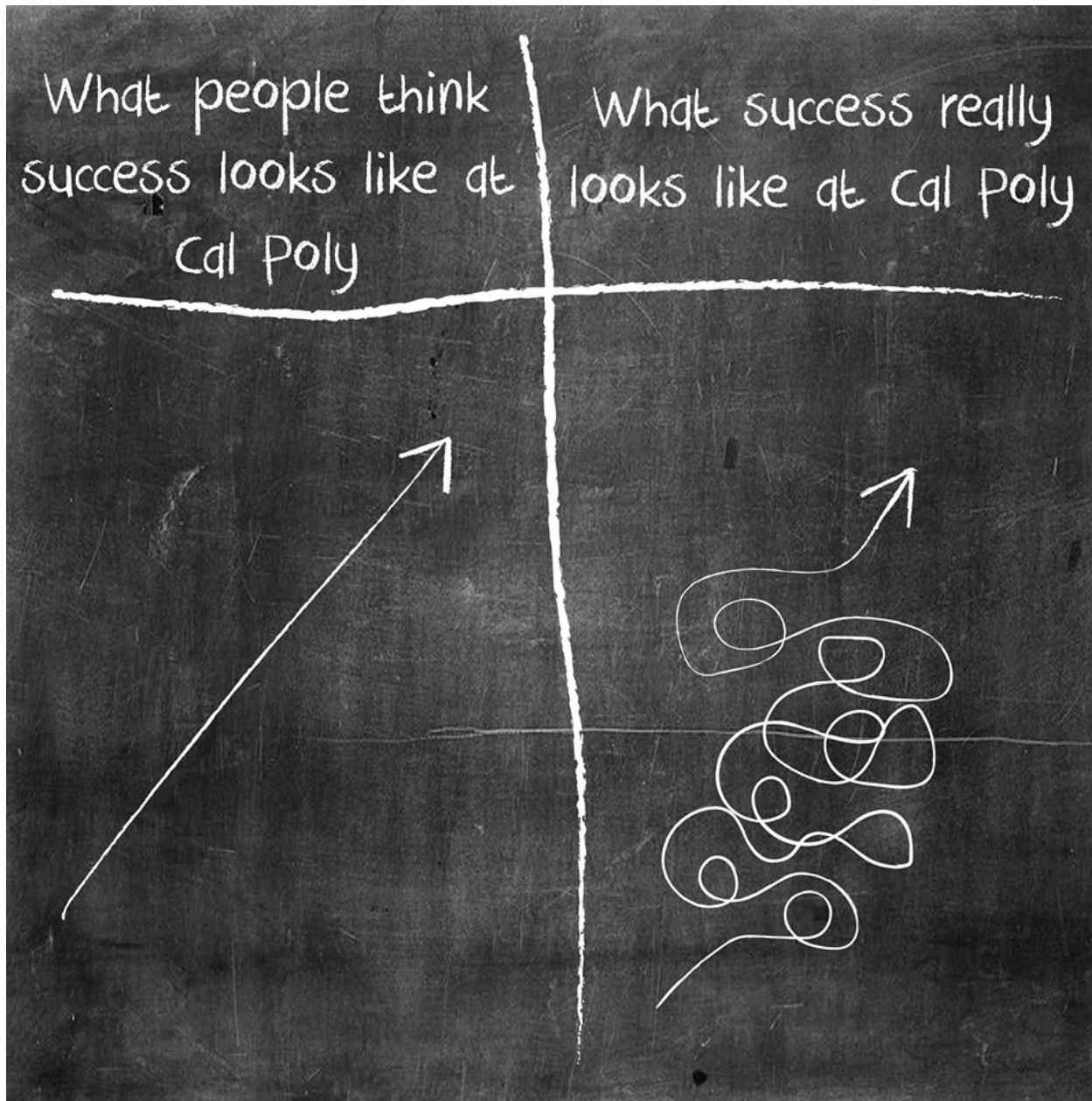
Journey to Academic Success

THIS SESSION

- Preparing for Cal Poly
- Learning about academic resources
- Introduction to curriculum tools
- Between now and WOW



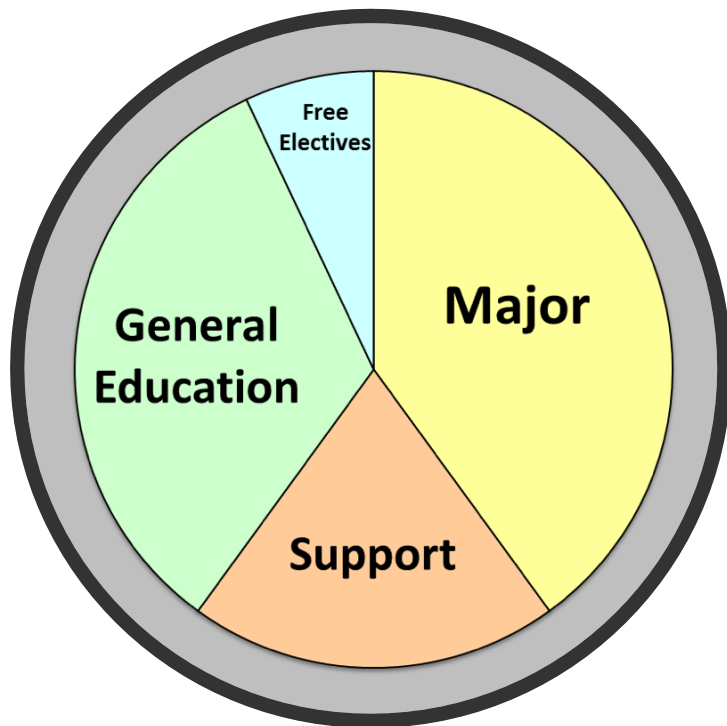
PREPARING FOR CAL POLY





DESTINATION: BACHELOR'S DEGREE

General



Cal Poly

- Learn by Doing Approach
- Comprehensive Polytechnic



AUDIENCE POLL

How many hours per week did you study during high school?

Zero (0)

1 - 4

5 - 12

13+

AUDIENCE POLL

How many hours per week do you anticipate studying in college?

Zero (0)

1 – 10

11 – 20

21 – 30

30+



STUDY
25-35
Hours/Week

2 HOURS / UNIT / WEEK

COLLEGE DIFFERENCES

High School

- Familiar setting
- Teachers
- In class 8 AM – 3 PM
- Homework/Quizzes
- Dependent Learner
- Supporter access to student progress (grades)

College

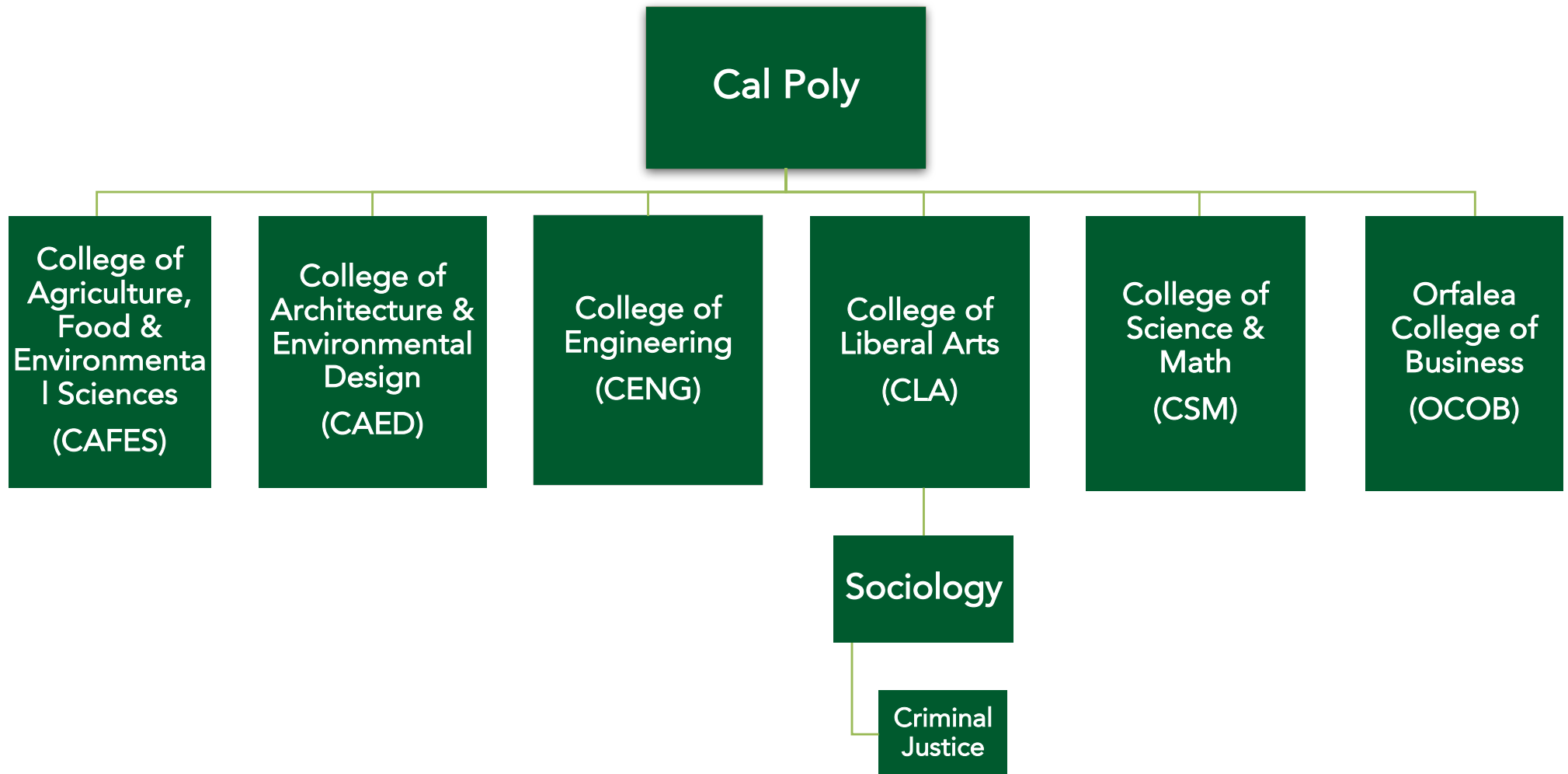
- New setting/New rules
- Professors
- Varied schedule
- Midterms/Finals
- Independent Learner
- FERPA



TRANSITIONING TO CAL POLY



- Quarter system
- Declared major
- Surrounded by high achieving students
- 96% of freshmen live on campus
- Class sizes
- Cal Poly email
- Cal Poly lingo




GET TO KNOW YOUR RESOURCES

[Skip to Content](#) ?

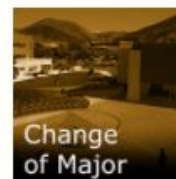
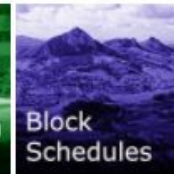
[Current Students](#) [Prospective Students](#) [Parents](#) [Business Community](#) [Faculty & Staff](#) [Alumni](#)

[my CalPoly login](#)

[Search this site](#) 

CAL POLY | Academic Advising

[Advising Home](#) [Advising Centers](#) [Curriculum and Flowcharts](#) [GPA Calculator](#) [Registration Calendars](#)



FOR STUDENTS

- [Academic Probation Support](#)
- [AP/IB Credit](#)
- [assist.org handout](#)
- [Catalog](#)
- [Credit/No Credit Grading](#)
- [CSU Fully Online](#)
- [Fees and Payments](#)
- [Graduation Writing Requirement \(GWR\)](#)
- [Summer School Options](#)
- [Time Management Worksheets](#)
- [Transcripts](#)
- [USCP Requirement](#)
- [Withdrawal Information](#)

CAMPUS RESOURCES

- [Admissions](#)
- [Campus Health & Wellbeing](#)
- [Career Services](#)
- [Clubs & Organizations](#)
- [Cross Cultural Centers](#)
- [Dean of Students](#)
- [Disability Resource Center](#)
- [Diversity & Inclusivity](#)
- [Financial Aid](#)
- [Housing](#)
- [Leadership & Service](#)
- [Library](#)
- [New Student & Transition Programs](#)
- [Office of the Registrar](#)
- [Ombuds](#)

CURRICULUM SHEET

BS PSYCHOLOGY

2017-2019

updated
03.23.17

Units Required 180

NOTE: This document can be used as a compact display of courses and other curricular requirements at the time of publication of the 2017-2019 catalog. The Degree Progress Report must be used to track students' progress in all degree requirements, throughout their Cal Poly career.

Note: No major or support courses may be selected as credit/no credit.

MAJOR COURSES (81)	Units
PSY 201/202 Gen Psy (D4) ¹	4
PSY 252 Social Psy	4
PSY/CD 256 Dev Psychology	4
PSY 305 Personality	4
PSY 323 Helping Relationship	4
PSY 329 Res Methods in Psy	4
PSY 333 Quant Res Meth-Behav Sci	3
PSY 340 Biopsychology (B5) ¹	4
PSY 372 Multicultural Psy (USCP)	4
PSY 405 Abnormal Psy	4
Supervised Fieldwork and/or Research Internship	5
Select from the following:	
PSY 448, 449, 453, 454	5
PSY 457 Memory & Cognition	4
PSY 458 Learning	4
PSY 461 Senior Project Seminar	1
PSY 462 Senior Project	3
PSY electives (300-400 level)	20

SUPPORT COURSES (12)	Units
BIO 302 Human Genetics	4
or PSY 344 Behavioral Genetics	
STAT 217 Intro to Stat Concepts and Methods (B1) ^a	4
Select from the following:	4
CD 424; ES 320, 321, 322, 323, ES/WGS 350, ES 380, 381; PSY 260, 304, 318, PSY/WGS 324, PSY 475; WGS 301, 320, 340, WGS/RELS 370	

¹ Required in Major/Support; also satisfies GE.

GENERAL EDUCATION (GE)	60
72 units required, 12 of which are specified in Major and/or Support	
Minimum of 12 units required at the 300 level.	
Area A Communication	12
A1 Expository Writing	4
A2 Oral Communication	4
A3 Reasoning, Argumentation & Writing	4
Area B Science and Mathematics	12
B1 Mathematics/Statistics (4 units in Support) ¹	
B1 Mathematics/Statistics	4
B2 Life Science	4
B3 Physical Science	4
B4 One lab with either B2 or B3	
B1-B5 Elective (4 units in Major) ¹	
Area C Arts and Humanities	16
C1 Literature	4
C2 Philosophy	4
C3 Fine/Performing Arts	4
C4 Upper-division elective	4
Area D/E Society and the Individual	16
D1 The American Experience (40404)	4
D2 Political Economy	4
D3 Comparative Social Institutions	4
D4 Self Development (CSU Area E) (4 units in Major) ¹	
D5 Upper-division elective (No PSY)	4
Area F Technology (upper div)	4

FREE ELECTIVES 27

OTHER DEGREE REQUIREMENTS:

- Cal Poly, Higher Ed, and Major GPA must all be at least 2.00
- For students admitted Fall 2016 and after, a grade of C- or higher is required in GE A1, A2, A3, and one GE B1 course

All students must complete:

- United States Cultural Pluralism Requirement
- Graduation Writing Requirement
- 60 units Upper Division (any 300-400 level classes)
- Upper Division units in the Major: 27
- Residency Requirements: See Degree Progress Report for details

FLOWCHART

CAL POLY
SAN LUIS OBISPO

B.S. in PSYCHOLOGY
Suggested 4-Year Academic Flowchart

2017-2019 Catalog

Updated 7/3/2017

FRESHMAN			SOPHOMORE			JUNIOR			SENIOR		
Fall	Winter	Spring	Fall	Winter	Spring	Fall	Winter	Spring	Fall	Winter	Spring
General Psychology PSY 201 or 202 (4) [D4]	Social Psychology PSY 252 (4) (PSY 201 or 202)		Personality PSY 305 (4) (PSY 201 or 202)			Abnormal Psychology PSY 405 (4) (PSY 201 or 202)			Memory and Cognition PSY 457 (4) (PSY 333)		
	Developmental Psych. CD / PSY 256 (4) (PSY 201 or 202)		Research Methods in Psychology PSY 329 (4) (PSY 201 or 202, STAT 217 or 211, or Instr. Consent)			Biopsychology PSY 340 (4) (PSY 201 or 202) [B5]			Learning PSY 458 (4) (PSY 333)		
GE (4) **		Introduction to Statistical Concepts and Methods STAT 217 (4)* [B1]			Quantitative Research Methods PSY 333 (3) (PSY 329 or SOC 333, & STAT 217, or Instr. Consent)			Senior Project Seminar PSY 461 (1) (PSY 329; Sr. standing)			
Expository Writing ENGL 133/134 (4)** [A1]			Support Elective (4) ¹			Electives PSY 300-400 (4) *				Senior Project Seminar PSY 462 (3) (PSY 461)	
Oral Communication COMS 101/102 (4)** [A2]						Electives PSY 300-400 (4) *			Supervised Fieldwork &/or Research Internship Select one course from the following: PSY 448, 449, 453, 454 (5) *		
	Reasoning, Argumentation, & Writing [A3] COMS 126; COMS / ENGL 145; ENGL 148; PHIL 126 (4)** (Completion of GE A1 with a C- or better) Can be taken anytime between Winter of Freshman and Winter of Sophomore Years.					Multicultural Psychology PSY 372 (4) (PSY 201 or 202; Soph. standing) [USCP]		The Helping Relationship PSY 323 (4) (Jr. standing, one USCP course, Instr. Consent)	Supervised Fieldwork &/or Research Internship Select one course from the following: PSY 448, 449, 453, 454 (5) *		
GE (4) **			GE (4) **				Human Genetics BIO 302 (4)^{2*} or Behavioral Genetics PSY 344 (4)^{3*}		Electives PSY 300-400 (4) *		
GE (4) **			GE (4) **				GE (4) **		Electives PSY 300-400 (4) *		
GE (4) **			GE (4) **				GE (4) **		Electives PSY 300-400 (4) *		
GE (4) **			GE (4) **				GE (4) **		Electives PSY 300-400 (4) *		
			Free Elective (4)				Free Elective (4)		Free Elective (4)		
			Free Elective (4)				Free Elective (4)		Free Elective (4)		
			Free Elective (4)				Free Elective (4)		Free Elective (3)		
							Graduation Writing Requirement GWR* (Students can attempt to fulfill the requirement after 90 earned units; students should complete the requirement before senior year)				
TOTAL YEARLY UNITS	44		TOTAL YEARLY UNITS	44		TOTAL YEARLY UNITS	47		TOTAL YEARLY UNITS	45	
									TOTAL:	180	

Notes:

Legend:

GUIDES ALONG THE WAY

- Academic Advisors
- Faculty
- Career Services
- Campus Organizations
- Resource Centers
- Academic Skills Center
- Peer Advisors/Mentors



Students create their own connections!

BETWEEN NOW AND WOW



YOUR Roadmap TO CAL POLY

- 1 JULY–AUGUST SLO DAYS**
 Explore resources at advising.calpoly.edu
 Continue to check "To-Do" list in Cal Poly portal
- 2 AUGUST 8 BLOCK SCHEDULE AVAILABLE**
 Log in to your portal, then access your Block Schedule by going to Student Center > My Class Schedule
 Visit the First Year Students tab on advising.calpoly.edu to learn how to interpret your block schedule
 Necessary changes to block schedules can be made August 14–16 (check Student Center for assigned time)
- 3 AUGUST BEFORE MOVE-IN**
 Able to enroll in up to 22 units starting August 20
 Continue to check Cal Poly email
 Complete [CSHondStrengths For Students](#)
 Recommended: Submit immunization records to Health Services (if graduated from a California public high school, no need to submit records)
 Complete [Not Anymore](#) training by September 13
- 4 SEPTEMBER 16–23 WOW**
 Get acquainted with SLO and Cal Poly
 Meet your college advising centers and departments
 Learn about and complete PolyPlanner
 Buy or rent your books
- 5 SEPTEMBER 20 CLASSES BEGIN**
 Review time management calendar
 Finalize schedule by add/drop deadline of October 1
 Finalize PolyPlanner through Spring 2018 by October 1
 Attend a PASS Party in the residence halls to learn how to register in early November
 Check your Student Center for registration dates, holds, and to-do items throughout Fall Quarter

SAVE THE DATE	
JULY 15 Final transcript and test scores due	JULY 9–AUG 18 SLO Days Session
AUG 4–15 Pay the balance of Housing fees or full or fee auto-enrolled in the installment payment plan	AUG 6 Housing assignments posted on Cal Poly Portal at 11 a.m. (Resident and room standing)
AUG 8 Block schedules are available to view	AUG 14–16 Students are able to make changes to their block schedule
SEPT 1 1st installment of Housing & Dining payment due; Installments due on the 1st of the month through April 1	SEPT 13 Deadline to complete Not Anymore training
SEPT 14–15 Moving Week: student move-in days	SEPT 16–23 Week of Welcome
SEPT 20 First day of classes	SEPT 25 Open enrollment ends -- last day to add class without permission number
OCT 1 Add/drop deadline; Update PolyPlanner	OCT 19–21 Moving Family Weekend
OCT 24 PASS available for Winter Quarter	NOV 8–11 Homecoming
NOV 12 Veteran's Day observed	NOV 19–23 Thanksgiving Break
DEC 10–14 Break Week	

FALL BLOCK SCHEDULES

- Block schedules include:
 - *Major*
 - *Support*
 - *General Education (GE)*

Dates and Deadlines for Block Schedule 2018

August 8: Block Schedules are available

August 14-16: Necessary changes can be made. Check your Student Center for your specific appointment time.

August 17-19: Students will not be able to make changes to their schedules

August 20: 2nd round of registration begins (enroll in more than 16 units if you want)

August 25-September 17: Open Enrollment

October 1, 2018: Add/Drop Deadline

QUESTIONS?



THE FIGHT SONG



CAL POLY FIGHT SONG

Ride High You Mustangs,
Kick the frost out burn the breeze,
Ride High You Mustangs,
The bow wows we'll knock to their knees
Hi Ki Yi

Ride High You Mustangs
Chin the moon and do it right
Ride High and cut a rusty
Fight! Fight! Fight!

WE WANT TO HEAR FROM YOU!

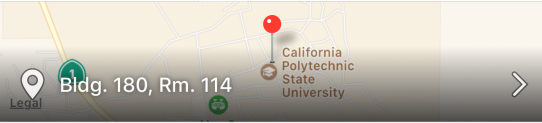
Search LTE 1:52 PM 79%

< Details N

Get Involved! - Clubs & Orgs

Monday, July 9 3:05-3:35 PM

● Student Track >



Legal Bldg. 180, Rm. 114 California Polytechnic State University

Rate this session ★★★★★

Cal Poly students love to get involved; it's who we are. Clubs and organizations help students get connected doing the things they love. Plus, you'll learn about opportunities to boost professional connections, serve the community, and build long-lasting friendships.

FORMS

SLO Days Student Session Evaluation >
Please fill out the following survey for our SLO Days prese...

Add to my schedule? Add now >

Search LTE 1:52 PM 79%

< N

1 This session provided me with valuable information. (required)
5 being the highest.

1 2 3 4 5

2 This session gave me ideas on how succeed at Cal Poly. (required)
5 being the highest.

1 2 3 4 5

3 This session matched the title and description that was provided. (required)
5 being the highest.

1 2 3 4 5

4 The session gave the audience a chance to ask questions and clarify. (required)
5 being the highest.

< > ↺ ...

Search LTE 1:52 PM 79%

< N

7 Why or why not?

8 Please provide overall comments for presenters.

9 If you would like to be considered for the Cal Poly Student prize drawing, please provide your email address below:

< > ↺ ...