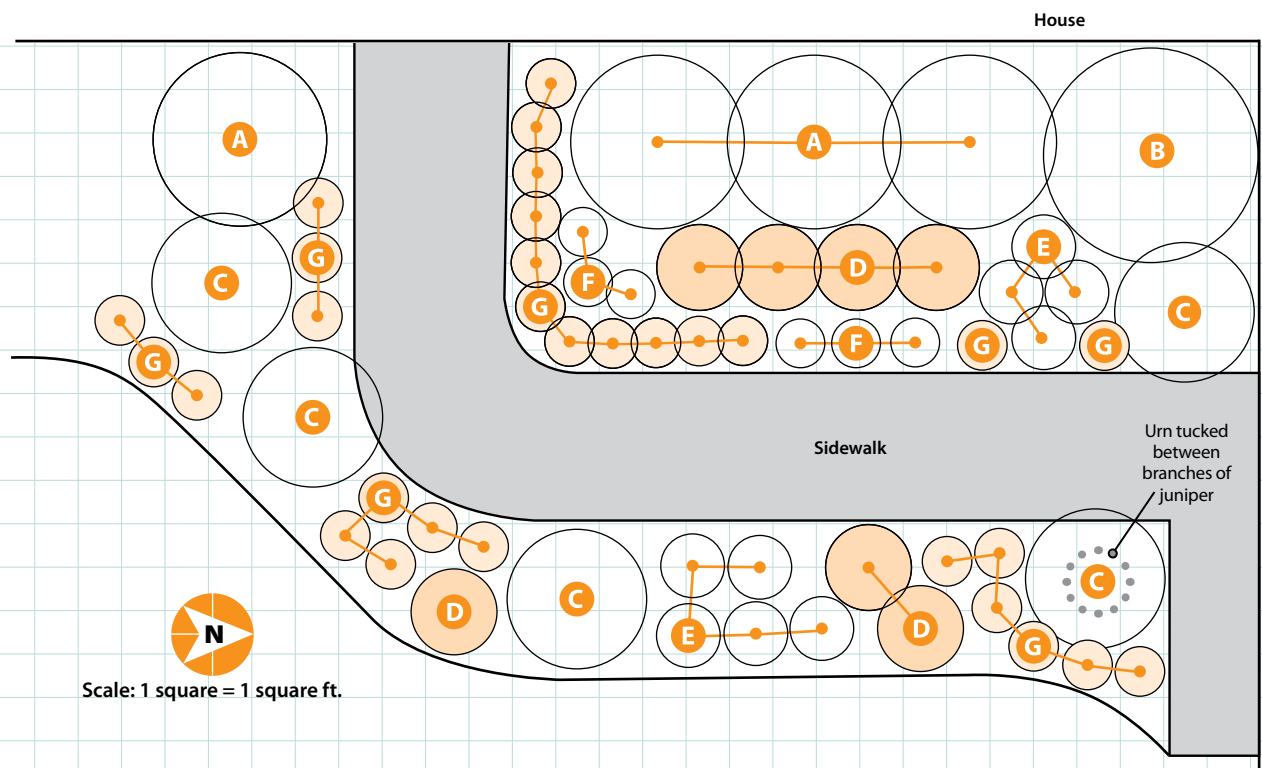


SIMPLY ELEGANT

Carefully chosen colors, repeated clumps of plants and plenty of multi-season interest will keep any entryway planting looking great. Pink flowers and burgundy foliage are happy partners in this front-door planting. Blooms start with the weigela in the spring, and wrap up with sedum in the fall. Burgundy coral bells and smokebush add foliage color no matter what's blooming. Shrubs give any planting interest year-round structure and interest. And planting in clumps, instead of scattering plants here and there, gives this planting weight and substance, instead of too much fine, wispy texture. □



Code	Plant Name	No. to Plant	Blooms	Type	Cold/Heat Zones	Height/Width
A	Weigela <i>Weigela florida</i> 'Pink Princess'	4	Pink; late spring to early summer	Shrub	4-8/8-1	4-6 ft./4-6 ft.
B	Smokebush <i>Cotinus coggygria</i> 'Velvet Cloak'	1	Pink-gray; spring	Shrub	5-8/8-1	10-15 ft./10-15 ft.
C	Juniper <i>Juniperus sabina</i> Calgary Carpet® ('Monna')	5	NA	Evergreen shrub	3-8/8-1	9-12 in./60-72 in.
D	Sedum <i>Sedum</i> 'Autumn Joy' ('Herbstfreude')	7	Pink; late summer to fall	Perennial	3-9/9-1	24 in./24-36 in.
E	Purple coneflower <i>Echinacea purpurea</i> 'Kim's Knee High'	9	Pink; mid- to late summer	Perennial	3-9/9-1	18-24 in./18-24 in.
F	Veronica <i>Veronica spicata</i> 'Red Fox' ('Rotfuchs')	6	Pink; mid- to late summer	Perennial	3-8/8-1	12-24 in./15-24 in.
G	Coral bells <i>Heuchera</i> 'Amethyst Myst'	30	Pink; midsummer	Perennial	4-9/9-1	12-16 in./15-18 in.