

721-733 EAST 7TH STREET, SAINT PAUL

# Historic Stutzman Building - For Lease



## BUILDING INFORMATION

- Now available - approx. 1,000 SF office unit with retail exposure on East 7th St. in the Stutzman building - a Landmark in East Saint Paul.
- **Layout includes three offices, private restroom, and open reception area. Access to common kitchen.**
- Gross rent of \$2,095 is fully inclusive of all expenses inc. utilities. Flexible lease term.
- Hardwood floors, exposed brick - shows great!
- Building signage / dedicated entry
- Adjacent to Swede Hollow Cafe
- Metro State University & Mississippi Market in Immediate Area!

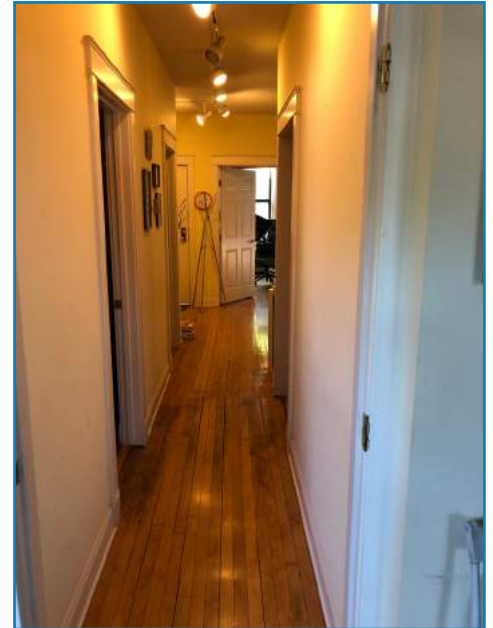


TED LAFAVE, PRESIDENT  
90 SOUTH DALE STREET  
SAINT PAUL, MINNESOTA 55102  
(612) 875-3858  
[TED@EJLCOMMERCIAL.COM](mailto:TED@EJLCOMMERCIAL.COM)

[WWW.EJLCOMMERCIAL.COM](http://WWW.EJLCOMMERCIAL.COM) (612) 875-3858



# Stutzman Building Photos



TED LAFAVE, PRESIDENT

90 SOUTH DALE STREET

SAINT PAUL, MINNESOTA 55102

☎ (612) 875-3858

✉ [TED@EJLCOMMERCIAL.COM](mailto:TED@EJLCOMMERCIAL.COM)

[WWW.EJLCOMMERCIAL.COM](http://WWW.EJLCOMMERCIAL.COM) (612) 875-3858

# 721-733 EAST SEVENTH STREET, SAINT PAUL, MN 55106

