

CHASKA GATEWAY PLAZA

1004-1020 Gateway Drive, Chaska, Minnesota 55318

M S P
COMMERCIAL



GENERAL INFORMATION

- Attractive, Centrally Located Retail Building
- Bays from 1,400 SF to 4,799 SF Available
- Great Visibility & High Traffic Counts
- Strong Local Ownership & Management
- Join Caribou Coffee, Papa Murphy's, Chaska Liquor, T-Mobile, & Good and Twisted Yoga
- Flexible Rental Rates
- **Aggressive Tenant Improvement Packages Available for Qualified Tenants**

CONTACT:

Justin Stueve

Copperwood Investments, LLC

Tel. 612.360.8104

justin@copperwood-realestate.com

Ted LaFave

EJL Commercial Real Estate

Tel. 612.875.3858

ted@ejlcommercial.com

6109 Blue Circle Drive, Suite 2100

Minnetonka, Minnesota 55405

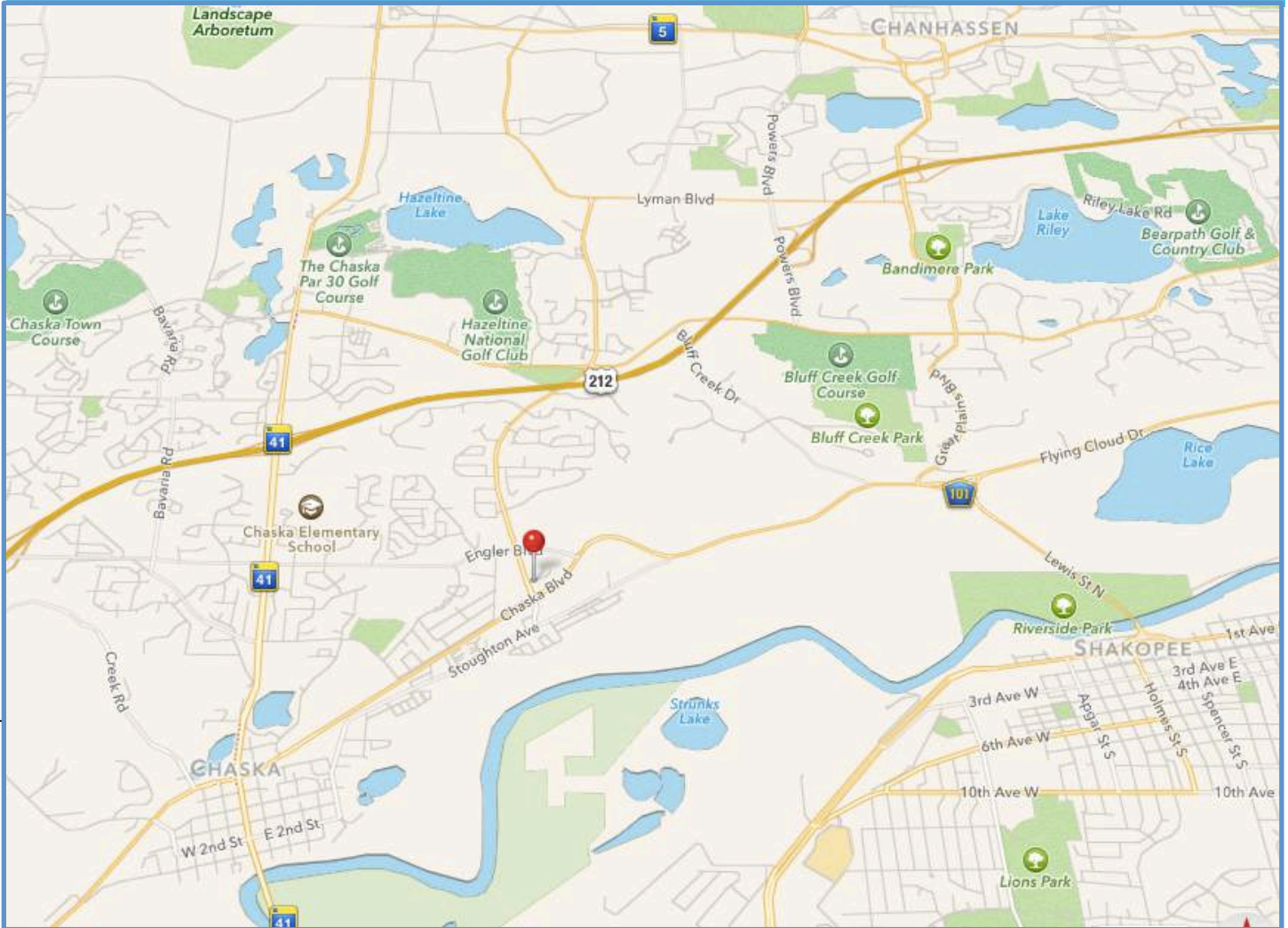
Fax: 952.392.1309

Ted LaFave
612-875-3858

Justin Stueve
612-360-8104



ShowcaseMyBuilding.com



OVERVIEW

Chaska Gateway Plaza is a newer construction Retail Center located on Chaska Blvd and County Rd 17 (Audubon Rd) . Building is situated on a controlled intersection and surrounded by future commercial development sites.

Space is available from 1,400 SF to 4,799 SF. Contact Brokers for additional information and for a tour.

LEASE RATES

Base Rent: Negotiable
 Tax & CAM: \$7.05 per SF (2015)
 Lease Term: 4-10 Year

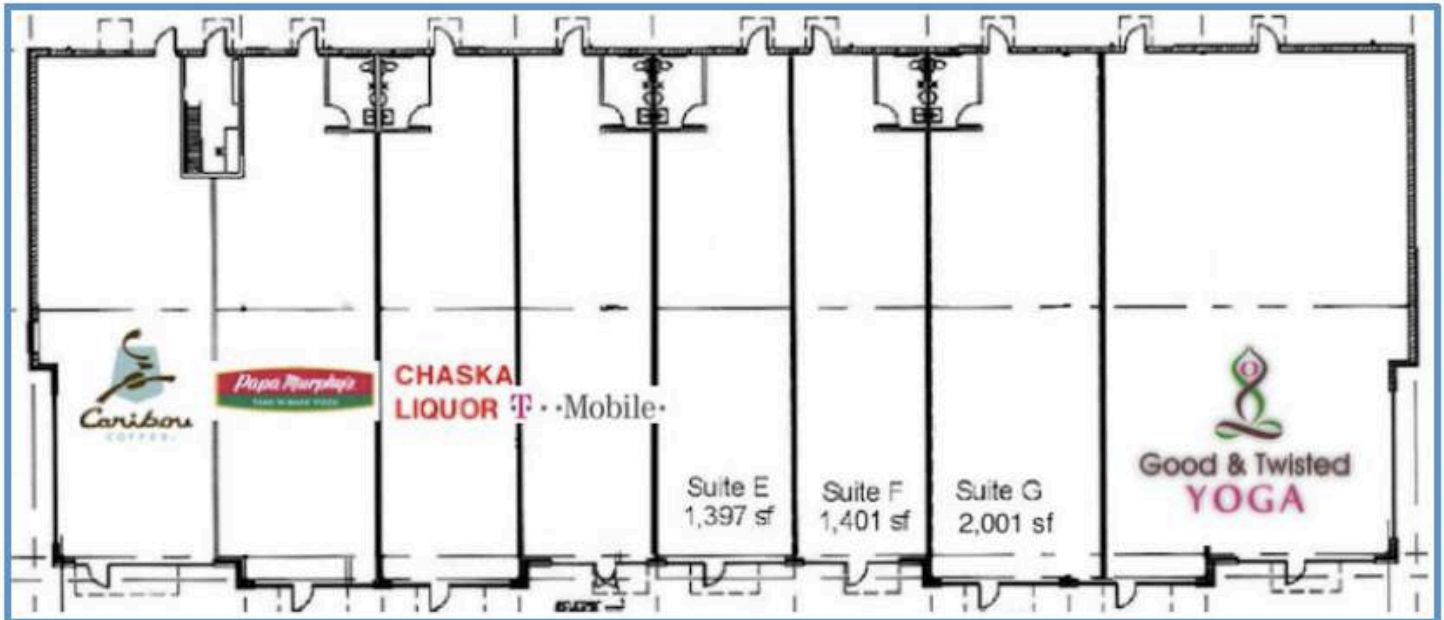


Ted LaFave
 612-875-3858

Justin Stueve
 612-360-8104

ShowcaseMyBuilding.com

FLOOR PLANS



Available Units

- Unit E – 1,397 SF
 - Unit F – 1,401 SF
 - Unit G – 2,001 SF
- *4,799 SF Combined



COMMERCIAL
REAL ESTATE

COPPERWOOD
REAL ESTATE

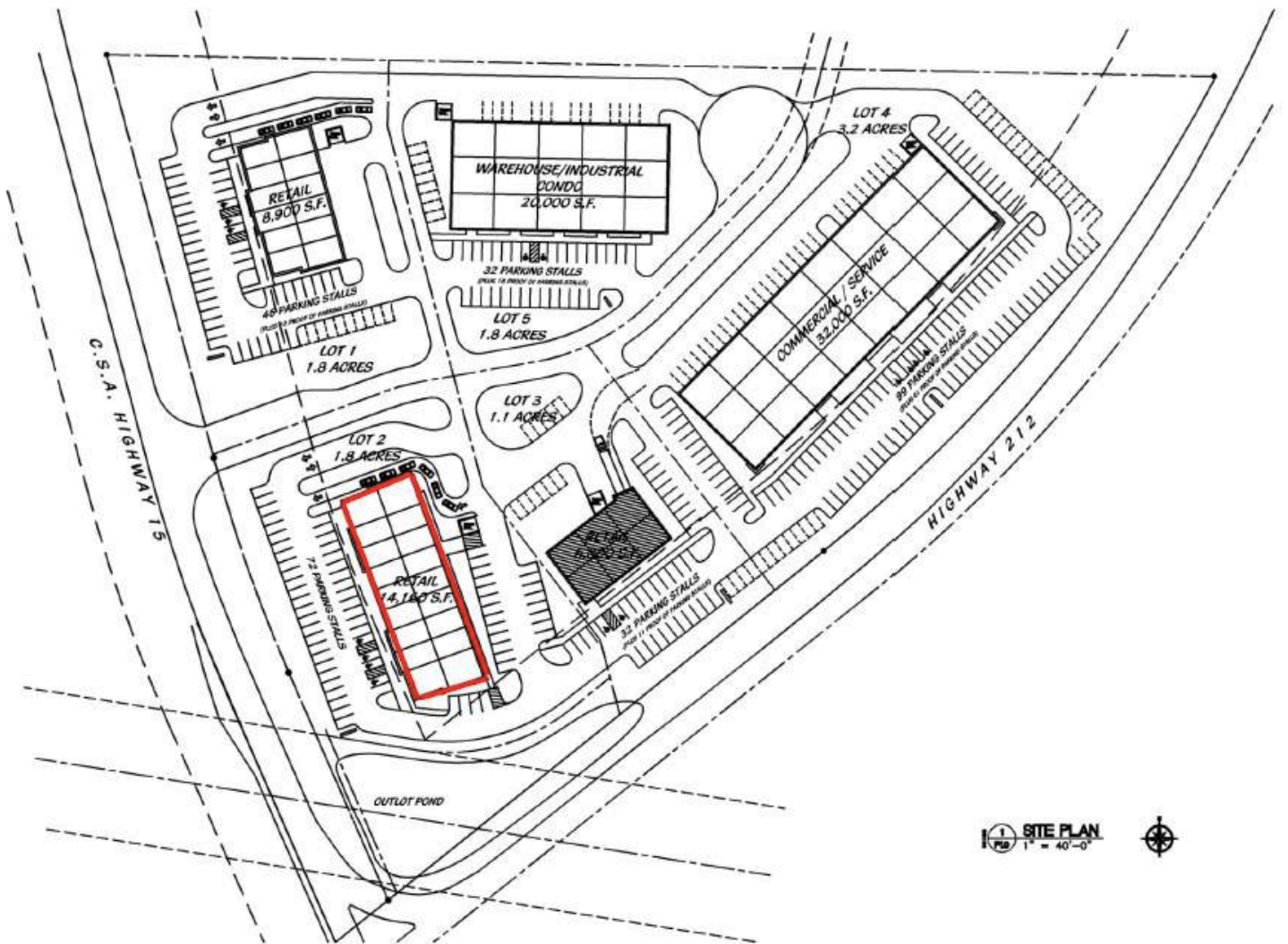
6109 Blue Circle Drive Suite #2100
Minnetonka, MN 55343

Ted LaFave
612-875-3858

Justin Stueve
612-360-8104

ShowcaseMyBuilding.com

SITE PLAN



COMMERCIAL
REAL ESTATE

COPPERWOOD
REAL ESTATE

6109 Blue Circle Drive Suite #2100
Minnetonka, MN 55343

Ted LaFave
612-875-3858

Justin Stueve
612-360-8104

ShowcaseMyBuilding.com