

RETAIL / OFFICE FOR LEASE

522 FAXON RD N., NORWOOD YOUNG AMERICA



BUILDING INFORMATION

- 3,474 SF Retail Building on Large 1.09 Ac. Lot
- Building Expansion Possible
- 36+ Parking Stalls & Large Monument Sign
- Divisible to 2,489 SF & 985 SF (Former Dental)
- 1980 Masonry Construction / New Roof 2002
- Central Air Conditioning
- Zoned C-2 General Commercial
- Improvement Allowance Available for Qualified Tenants
- **High Profile Location off Hwy 212 in Norwood Young America!**

Co-Agency Listing



Ted LaFave, President
(612) 875-3858
ted@ejlcommercial.com

Justin Stueve, Vice President
(612) 360-8104
justin@copperwoodmn.com

Ted LaFave
612-875-3858

Justin Stueve
612-360-8104



ShowcaseMyBuilding.com

SITE PLAN



Ted LaFave

612-875-3858

Justin Stueve

612-360-8104



ShowcaseMyBuilding.com

FLOOR PLANS



TENANT 01 (938 GSF / 985 RSF)



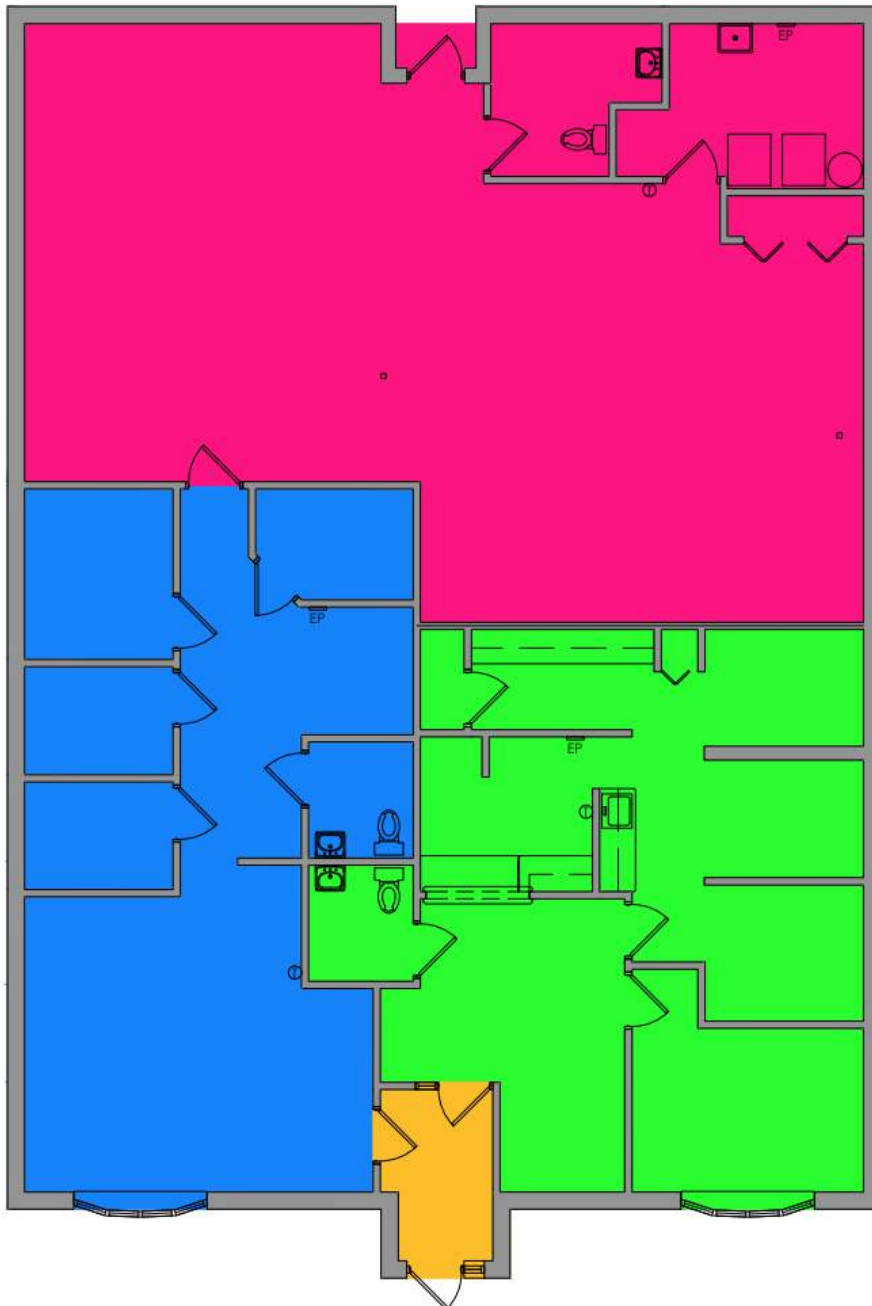
TENANT 02 (923 GSF / 969 RSF)



TENANT 03 (1,520 GSF/ RSF)



BUILDING COMMON (84 GSF)



Ted LaFave

612-875-3858

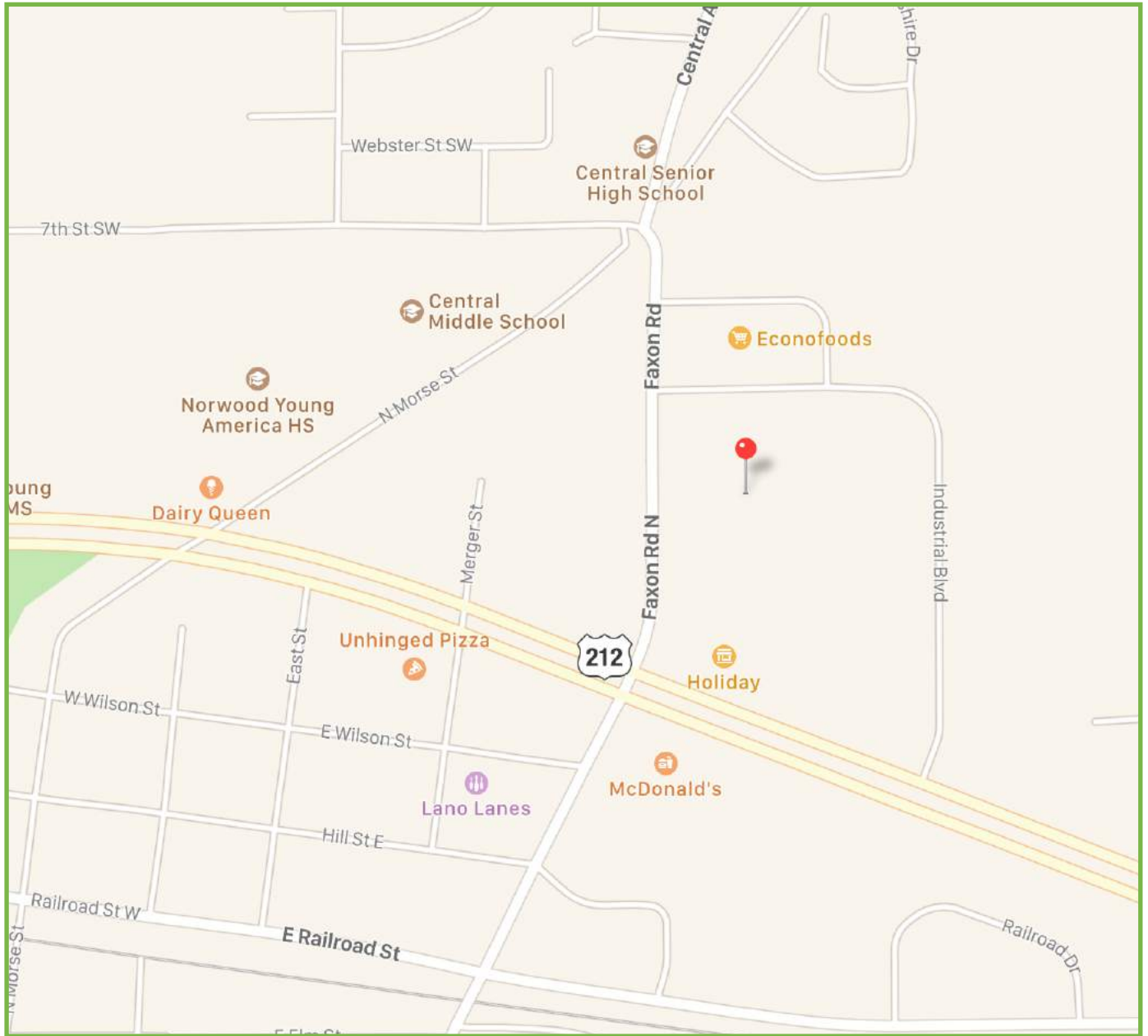
Justin Stueve

612-360-8104



ShowcaseMyBuilding.com

522 FAXON RD N., NORWOOD YOUNG AMERICA, MINNESOTA



Ted LaFave
612-875-3858

Justin Stueve
612-360-8104

ShowcaseMyBuilding.com