

SECOND FLOOR OFFICE CONDO FOR LEASE

# 2115 East County Road D, Maplewood



## BUILDING INFORMATION

- 1,200 SF Office Condo for Lease
- Affordable Gross Rent - Just \$1,550 per Month Fully Inclusive - 3-5 Year Lease Term
- **Furnished & Move-In Ready!**
- Three Offices, Open Area, & Conference Room (or 4th Office) & Kitchen
- Great Views - Windows in every Office
- Local & On-Site Ownership
- Comcast Internet Available
- Immediate Access to 694 via White Bear Ave & Many Area Amenities



TED LAFAVE, PRESIDENT

2236 PRINCETON AVE,

SAINT PAUL, MINNESOTA 55343

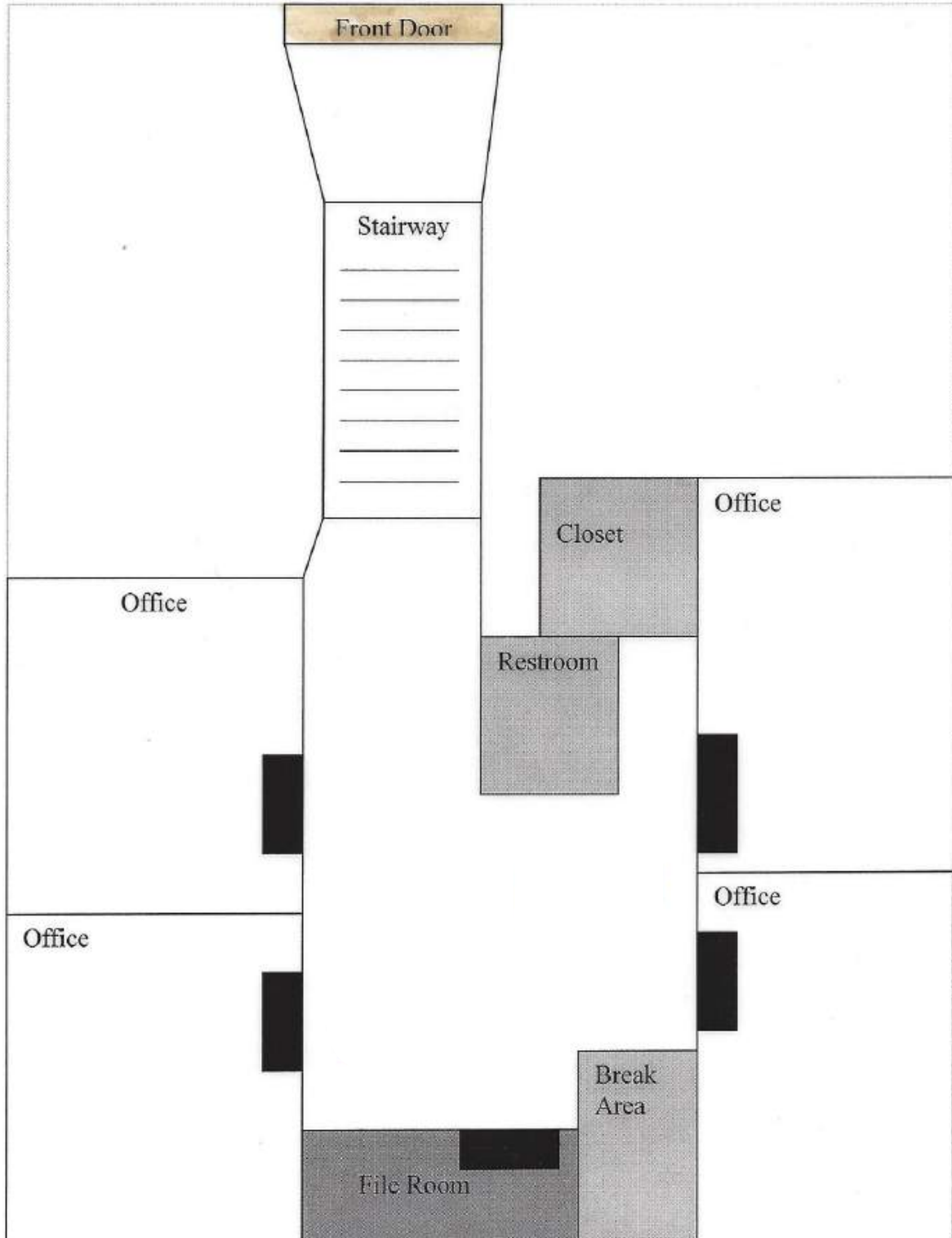
☎ (612) 875-3858

✉ [TED@EJLCOMMERCIAL.COM](mailto:TED@EJLCOMMERCIAL.COM)

[WWW.EJLCOMMERCIAL.COM](http://WWW.EJLCOMMERCIAL.COM) (612) 875-3858

# FLOOR PLAN - 1,200 SF

2115 B County Rd. D Maplewood, MN 55109



# 2115 EAST COUNTY RD. D, MAPLEWOOD, 55109

