

THE SPIRE

MAY 27, 2026

GRADUATION EDITION



Meet the Staff

Rev. Kim Mitchell
Rev. Debby Bartley
Rev. Steve Williams
Patti Adams
Karla Curry
Stacey Davis
Eric Heien
Marsha Hunt
Kerri Johnson
Beth Kelley
Jack McCormick
Jim Nichols
Olivia Osterhage
Meredith Ramsey
Katie Roam
Ellie Stahr



REMINDER

The Church Office
is closed on
Fridays

APPLY NOW

We're Hiring!

Nursery Caregiver

- Sunday mornings 8:45am-11am
- Curriculum Provided
- Starting at \$15/per hour



Send your resume to contact@firststcharlesumc.org to apply!

**First St. Charles United Methodist Church
Financial Statement for Operation Account
Projected Full Year 2026**

	2026 Budget / Forecast			
		Increase or (Decrease)		
	\$	from 2025	% TTL	% Inc
<u>Cash Inflow</u>				
Contributions	1,024,031	(12,570)	93.8%	-1.2%
Endowment	46,373	(1,684)	4.2%	-3.5%
First Kids Contribution	12,000	-	1.1%	
Memorials, Lose Cash and Other	9,331	(9,183)	0.9%	-49.6%
Total Contributions	1,091,735	(23,436)	100.0%	-2.1%
<u>Cash Outflow</u>				
Apportionment/Missions	161,893	3,887	14.8%	2.5%
Payroll	591,311	(32,125)	53.9%	-5.2%
Operating Expense	319,146	26,298	29.1%	9.0%
Program Expense	24,688	(3,465)	2.3%	-12.3%
Capital Related	-	-	0.0%	
Sub Total Operations	1,097,039	(5,406)	100.0%	-0.5%
Interest	5,621	(1,274)		
Total Operating Expenditures	1,102,660	(6,680)		-0.6%
Income/ (Loss) From Operations	(10,925)	(16,756)		

For 2026, we forecast that total financial contributions to our mission and ministries will be roughly \$1,024,000, which is 1.3% lower than last year. With mindful cuts, we've been able to reduce expenditures by about .6% to roughly \$1,097,000. Unfortunately, even with careful spending, we anticipate ending the year with an operating deficit of about \$11,000. While this is not cause for alarm, it is a reminder that the ministry and mission of our church depend on the ongoing financial support of the congregation. Thank you for the many ways you continue to help sustain the work God is doing through our church.

Send questions to:
contactleadership@firststcharlesumc.org

2026 Leadership Board



Kathy Avery



Donna Baeten



Rick Bahr



Tyler Brown



Greg DeKoster
Finance Chair

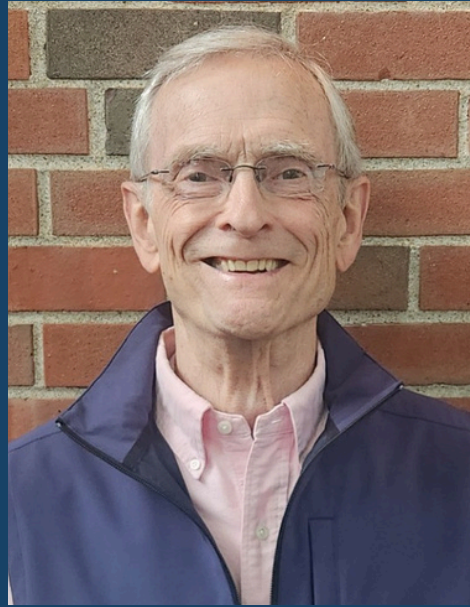


George Estopare-Ilse

2026 Leadership Board



Margaret Harper



John McClure
Chair



Michael Monahan



Tim Mosher
Lay Leader Liason



Jarred Ray
Trustee Chair



Carissa Sanders

If you have thoughtful inquiries or concerns, you may reach out to the Leadership Board in confidence at: ContactLeadership@firststcharlesumc.org

Join us on our Summer Mission Trip

July 19-25th

Thinking about a mission trip but feeling a little unsure? It's totally normal to have those "what ifs" creep in. You might be thinking, "I'm not handy, I don't know how to build or fix things, what good could I possibly be?" Honestly, that's a super common thought! So many of us feel that way before we go. But here's the cool part: when you decide to take the leap and say "yes," something amazing happens. Serving others and witnessing their genuine gratitude? That feeling? It's a blessing that sticks around way longer than the actual week you spent there. It truly is a gift that keeps on giving.

Last year, we had an incredible trip to Kentucky where we met the amazing Brenda. For years, she hadn't been able to enjoy her kitchen deck. Well, our team came in and not only rebuilt that deck but also transformed her front deck and installed new flooring in her living room. It was so rewarding to see Brenda step out onto her new deck for the first time in ages!



Now, we're gearing up for another mission adventure from July 19th to 25th! We're partnering with Appalachia Service Project again, this time heading to Buchanan County, Virginia. This trip is open to everyone, from 6th graders to adults.

Come join our team and help us make a real difference in someone's life – and get ready to be changed

yourself! The cost is \$375 per person for a week of serving and caring. It's a great deal for a fulfilling experience!



Seats on the bus may be limited, but we will absolutely hold space for you and your whole family! Don't delay any longer – take the leap and say "yes" to this opportunity today! If you have any questions or need more information before you commit, feel free to email Pastor Kim directly at kamitchell@firststcharlesumc.org. We can't wait to see you there!



**APPALACHIA
SERVICE
PROJECT**
Mission Trip

JULY 19TH-25TH

Open to adults and students who have completed 6th grade or higher!
Cost: \$375



AVERY



BLAZE



EDDIE



ELLIE

**MEET THE 2026
FIRST KIDS
PRE-
KINDERGARTEN
GRADUATES!**



EVELYN



FINLEY



JOHN



JULIAN



KIERAN



KNOX



NORA



PETER



SARAPHINA



SOLANA

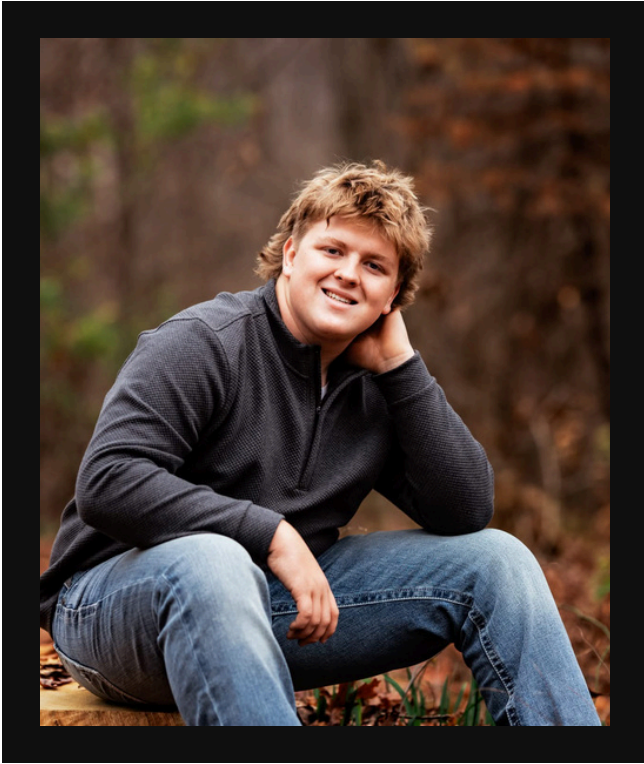


TATE



TREVOR

Meet the Graduates!



BRYON HARBISON

GRADUATING FROM: FREEBURG HIGH SCHOOL

**HE WILL ATTEND MCKENDREE UNIVERSITY TO
STUDY CYBER SECURITY/LEGAL STUDIES**

**BRYON IS THE SON OF GINA & GARY HARBISON
AND THE GRANDSON OF EMILY LUCAS.**

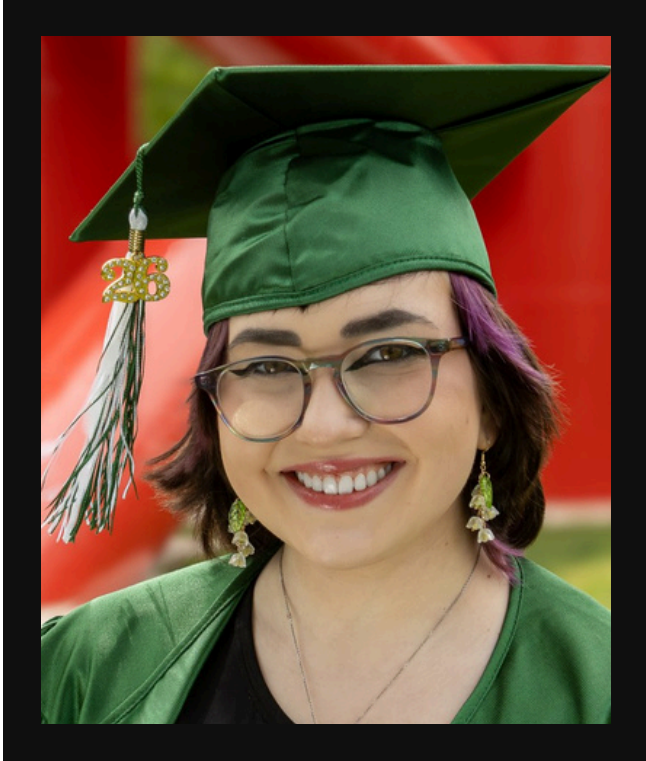


BARBARA KRYVKO

**GRADUATING FROM: LINDENWOOD UNIVERSITY
MASTER OF FINE ARTS DEGREE (MFA)**

**BARBARA ENJOYS SEMI-RETIREMENT AND
CONTINUES TO BE THE COOLEST TRAIN
CONDUCTOR AT THE ST. LOUIS ZOO!**

Meet the Graduates!



VANNY GILLESPIE

**GRADUATING FROM: ORCHARD FARM
HIGH SCHOOL**

**THEY PLAN ON ATTENDING ST. CHARLES
COMMUNITY COLLEGE TO PURSUE A
PERFORMING ARTS DEGREE.**

**VANNY IS THE DAUGHTER OF KARIS AND
THE LATE RICK GILLESPIE.**



WILSON BARKER

**GRADUATING FROM: FRANCIS HOWELL
CENTRAL HIGH SCHOOL, MAGNA CUM LAUDE**

**HE PLANS ON STUDYING ENGINEERING AT
MISSOURI UNIVERSITY SCIENCE &
TECHNOLOGY IN ROLLA.**

**WILSON IS THE SON OF JENNETTE BARKER &
GRANDSON OF KATHLEEN RAICHE.**

Meet the Graduates!



REBECCA DEKOSTER

GRADUATING FROM: THE UNIVERSITY OF WISCONSIN-MILWAUKEE WITH HER PHD IN GEOSCIENCES.

SHE IS WORKING AS A POSTDOCTORAL ASSOCIATE IN PALEONTOLOGY AT THE NATURAL HISTORY MUSEUM AT THE UNIVERSITY OF ALABAMA.

REBECCA IS THE DAUGHTER OF GREG & JEANNINE DEKOSTER AND SISTER TO NICHOLE.



NICHOLE DEKOSTER

GRADUATING FROM: THE UNIVERSITY OF MISSOURI WITH HER DOCTOR OF PHYSICAL THERAPY(DPT) DEGREE.

SHE'LL BE WORKING AT AN OUTPATIENT ORTHOPEDIC CLINIC IN SOUTH COUNTY STL.

NICHOLE IS THE DAUGHTER OF GREG & JEANNINE DEKOSTER AND SISTER TO REBECCA.

Meet the Graduates!

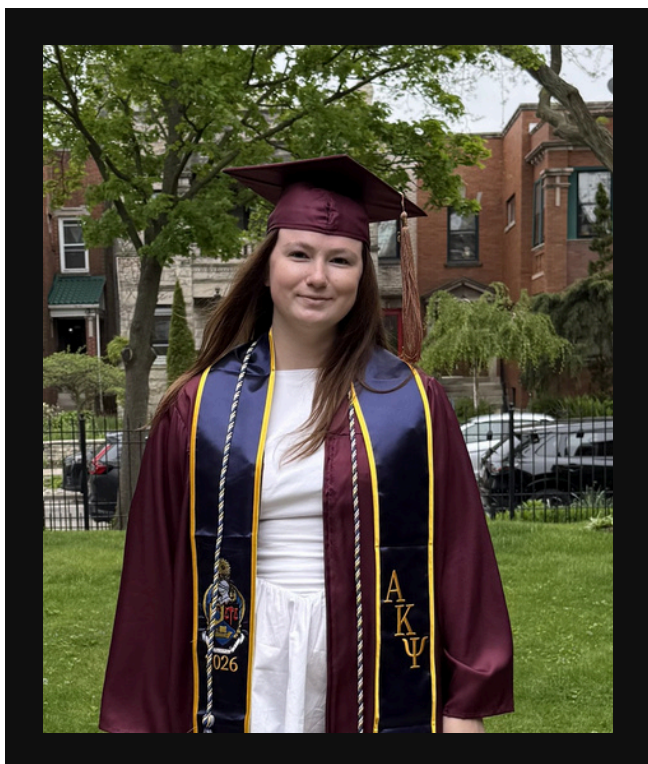


SARAH STAMPER

GRADUATING FROM: MISSOURI S&T WITH A DEGREE IN COMPUTER SCIENCE.

SHE WILL INTERN AT CENTENE THIS SUMMER.

SARAH IS THE DAUGHTER OF MICHELLE DEMUMBRANE.



BRIDGET ANN KRUG

GRADUATING FROM: LOYOLA UNIVERSITY CHICAGO, CUM LAUDE, WITH A BACHELOR'S OF BUSINESS ADMINISTRATION IN MARKETING, MINOR IN PUBLIC RELATIONS.

SHE IS CURRENTLY SEEKING A POSITION IN MARKETING STRATEGY OR ADVERTISING.

BRIDGET IS THE DAUGHTER OF CHRISTINE & BRYCE KRUG, GRANDDAUGHTER OF PHYLLIS & JACK HYMES.

Meet the Graduates!



CONNOR AIDEN MARVIN

GRADUATING FROM: ST. CHARLES HIGH SCHOOL

HE WILL ATTEND MISSOURI STATE UNIVERSITY IN THE FALL, MAJORING IN MUSIC EDUCATION.

CONNOR IS THE SON OF BECKY & SHAWN MARVIN.

Congratulations!

Lord, the future can feel big and uncertain. Bless our graduates with the courage to take risks and the strength to lean on you when life feels hard. Guide their steps into the next chapter. Surround them with a safe community of people who love and support them. Let them know they are never alone. Give them peace when they worry and joy as they build their future. Amen.

With much love & pride,
First St. Charles UMC Staff

SMALL GROUPS & MINISTRIES

WALKING GROUP

MAY 28TH [AT]
7:30AM

CONTACT OLIVIA IF YOU'RE
ATTENDING!



Little Food Pantry

ITEMS NEEDED:

mac n cheese cups - fruit cups - tuna packs -
individual peanut butter cups - ritz crackers - chili -
canned pasta (spaghetti o's/ravioli) - granola bars -
pudding cups - oatmeal packages - peanut butter
crackers

All canned items need to have pull-tab tops

SMALL GROUPS & MINISTRIES

FISH PANTRY

ITEMS NEEDED:

PEARS, CANNED POTATOES, PASTA SIDES, PANCAKE MIX, BBQ SAUCE, TOILET PAPER, HAIR CONDITIONER, BODY WASH, CHILDREN'S TOOTHBRUSHES



HELLO
MY NAME IS

*Welcome Team
Member*

Join our
Welcome Team!
It's the best way
to meet members
& guests on
Sunday mornings!

For more info, contact **Olivia Osterhage:**
oosterhage@firststcharlesumc.org

SMALL GROUPS & MINISTRIES



A vibrant graphic for a bingo event. The background is dark brown with a grid pattern. In the center, a large, glowing sign reads "BINGO Potluck". Above the sign are several bingo balls with numbers: 24 (green), 6 (blue), 1 (red), and 51 (yellow). There are also several bingo cards and chips scattered around. Below the sign, the text "55+ EVENT" and "JUNE 23RD AT 11:30AM" is displayed. On the left and right sides, there are circular callouts with letters and numbers: "N 39", "G 53", and "79".

BINGO Potluck

55+ EVENT
JUNE 23RD AT 11:30AM



A winter-themed graphic for a Vacation Bible School (VBS) event. The background is light blue with snowflakes. On the left, a QR code is shown with an arrow pointing to it, and the text "SCAN TO REGISTER!". In the center, the text "VBS 2026" is written in large, bold, blue letters. Below this, a snowball contains the text "JUNE 24TH-26TH 5-7:45PM". To the right, a cartoon walrus character wearing a green beanie and an orange jacket is holding a microphone. Above the walrus, the text "Cokesbury Kids" is written. Below the walrus, a sign reads "SNOWBALL MOUNTAIN CHALLENGE" and "FIND YOUR STRENGTH IN GOD". In the top right corner, there is a logo for "FIRST ST. CHARLES United Methodist Church" featuring a cross and three upward-pointing chevrons.

VBS 2026

SCAN TO REGISTER!

JUNE 24TH-26TH 5-7:45PM

Cokesbury Kids

SNOWBALL MOUNTAIN CHALLENGE

FIND YOUR STRENGTH IN GOD

FIRST ST. CHARLES
United Methodist Church

SMALL GROUPS & MINISTRIES



LGBTQ+ SMALL GROUP

BRING YOUR OWN DINNER AND
ENJOY A TIME OF FELLOWSHIP!

JUNE 16TH
CATHERINE COLLIER ROOM
@ FIRST ST. CHARLES
6:00 PM

Showers of Blessing

During the month of May we are collecting five kinds of cereal that are served to our Showers guests twice a week. You can drop off cereal in the church office.

We are cereal-ously grateful!



SMALL GROUPS & MINISTRIES

showers of blessing *meal guide*

50 SERVINGS

pro tips

- Our guests get a lot of the same foods over-and-over (*egg casserole*). They're grateful regardless, but they appreciate it when you think outside the box!
- Foods that are easy to hold and serve are great- think soups, casseroles, and other one-pot dishes.
- Some of our guests struggle with dental issues- so soft and easily digestible foods are preferred. Apples, crunchy granola, popcorn, and tough meats are often left behind.
- Freezer meals that can be brought ahead of time and reheated are ideal!
- Nutrient-dense and protein-rich meals help our folks stay healthy and warm.
- Your group can gather to cook together, or prepare individual components and assemble.
- If you or your group need space to prepare your meal, you can reserve our church kitchen by calling 636-947-0066.
- You can drop your meal off, or if you prefer, you can stay and serve your meal on the day-of.



Meal Sign-Up



Recipe Ideas



Quantities Guide

Mountain Gear Needed!

Help us transform our church into Snowball Mountain! We need to borrow all sorts of decorative equipment to make sure our climb is successful. All items will be returned after VBS.



- Skis
- Snowboards
- Ski Poles
- Ski Boots
- Puffer/ski jackets
- Sleds of all types
- Snow tubes
- Ice Skates
- Ski goggles/glasses
- Hockey sticks
- Any other winter sports gear
- Chiminea

Drop your items off at the office before June 14th. Mark items with your name (or we can label them) and we will make sure they are safely returned after VBS concludes!



**SAVE
THE DATE**

**SATURDAY, AUGUST 15TH
7:30 - 9:30 PM**

the
**last
splash
of summer**

**FREE DRINKS | FREE FOOD | FREE ENTRY
THE COVE @ ST. PETERS REC PLEX**

**† FIRST ST. CHARLES
United Methodist Church**



**RED CROSS
BLOOD DRIVE**

**WEDNESDAY,
JULY 22ND**

8:30-12:30 IN THE ATRIUM



FIRST ST. CHARLES UMC

May & June

June



SPIRE

CHOIR

WALKING GROUP

CHURCH OFFICE CLOSED

27 *Thursday* 28 *Friday* 29 *Saturday* 30

Sunday 31 *Monday* 1 *Tuesday* 2 *Wednesday* 3 *Thursday* 4 *Friday* 5 *Saturday* 6

YOUTH GROUP

GRIEFSHARE

CHOIR

ANNUAL CONFERENCE →

CHURCH OFFICE CLOSED

Sunday 7 *Monday* 8 *Tuesday* 9 *Wednesday* 10 *Thursday* 11 *Friday* 12 *Saturday* 13



YOUTH GROUP

GRIEFSHARE

SPIRE

CHOIR

WALKING GROUP

CHURCH OFFICE CLOSED

Sunday 14 *Monday* 15 *Tuesday* 16 *Wednesday* 17 *Thursday* 18 *Friday* 19 *Saturday* 20

YOUTH GROUP



CAREGIVERS
LGBTQ+

CHURCH OFFICE CLOSED

PRIDE
ST. CHARLES

Sunday 21 *Monday* 22 *Tuesday* 23 *Wednesday* 24 *Thursday* 25 *Friday* 26 *Saturday* 27

HAPPY
FATHER'S
DAY



LEADERSHIP
BOARD MEETING
[at] 7PM

SPIRE



VBS

CHURCH OFFICE CLOSED