

THE SPIRE

JUNE 24, 2026

We are ready for our VBS Snowball Mountain Challenge!



Meet the Staff

Rev. Kim Mitchell
Rev. Debby Bartley
Rev. Steve Williams
Patti Adams
Karla Curry
Stacey Davis
Eric Heien
Marsha Hunt
Kerri Johnson
Beth Kelley
Jack McCormick
Jim Nichols
Olivia Osterhage
Meredith Ramsey
Katie Roam
Ellie Stahr



REMINDER

The Church Office is closed on Fridays

APPLY NOW

We're Hiring!

Nursery Caregiver

- Sunday mornings 8:45am-11am
- Curriculum Provided
- Starting at \$15/per hour



Send your resume to contact@firststcharlesumc.org to apply!

**First St. Charles United Methodist Church
Financial Statement for Operation Account
Projected Full Year 2026**

	2026 Budget / Forecast			
	\$	Increase or (Decrease) from 2025	% TTL	% Inc
<u>Cash Inflow</u>				
Contributions	1,024,031	(12,570)	93.8%	-1.2%
Endowment	46,373	(1,684)	4.2%	-3.5%
First Kids Contribution	12,000	-	1.1%	
Memorials, Lose Cash and Other	9,331	(9,183)	0.9%	-49.6%
Total Contributions	1,091,735	(23,436)	100.0%	-2.1%
<u>Cash Outflow</u>				
Apportionment/Missions	161,893	3,887	14.8%	2.5%
Payroll	591,311	(32,125)	53.9%	-5.2%
Operating Expense	319,146	26,298	29.1%	9.0%
Program Expense	24,688	(3,465)	2.3%	-12.3%
Capital Related	-	-	0.0%	
Sub Total Operations	1,097,039	(5,406)	100.0%	-0.5%
Interest	5,621	(1,274)		
Total Operating Expenditures	1,102,660	(6,680)		-0.6%
Income/ (Loss) From Operations	(10,925)	(16,756)		

For 2026, we forecast that total financial contributions to our mission and ministries will be roughly \$1,024,000, which is 1.3% lower than last year. With mindful cuts, we've been able to reduce expenditures by about .6% to roughly \$1,097,000. Unfortunately, even with careful spending, we anticipate ending the year with an operating deficit of about \$11,000. While this is not cause for alarm, it is a reminder that the ministry and mission of our church depend on the ongoing financial support of the congregation. Thank you for the many ways you continue to help sustain the work God is doing through our church.

Send questions to:
contactleadership@firststcharlesumc.org

2026 Leadership Board



Kathy Avery



Donna Baeten



Rick Bahr



Tyler Brown



Greg DeKoster
Finance Chair

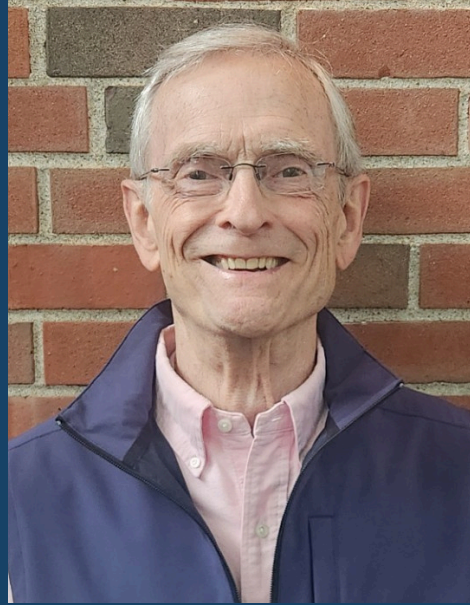


George Estopare-Ilse

2026 Leadership Board



Margaret Harper



John McClure
Chair



Michael Monahan



Tim Mosher
Lay Leader Liason



Jarred Ray
Trustee Chair



Carissa Sanders

If you have thoughtful inquiries or concerns, you may reach out to the Leadership Board in confidence at: ContactLeadership@firststcharlesumc.org

YOUTH GROUP

Sundays at 5pm

APPALACHIA SERVICE PROJECT *Mission Trip*

JULY 19TH-25TH

Open to adults and students who have completed 6th grade or higher!

Cost: \$375

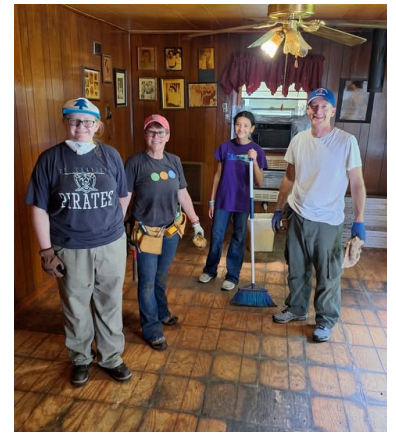


Join us on our Summer Mission Trip

July 19-25th

Thinking about a mission trip but feeling a little unsure? It's totally normal to have those "what ifs" creep in. You might be thinking, "I'm not handy, I don't know how to build or fix things, what good could I possibly be?" Honestly, that's a super common thought! So many of us feel that way before we go. But here's the cool part: when you decide to take the leap and say "yes," something amazing happens. Serving others and witnessing their genuine gratitude? That feeling? It's a blessing that sticks around way longer than the actual week you spent there. It truly is a gift that keeps on giving.

Last year, we had an incredible trip to Kentucky where we met the amazing Brenda. For years, she hadn't been able to enjoy her kitchen deck. Well, our team came in and not only rebuilt that deck but also transformed her front deck and installed new flooring in her living room. It was so rewarding to see Brenda step out onto her new deck for the first time in ages!



Now, we're gearing up for another mission adventure from July 19th to 25th! We're partnering with Appalachia Service Project again, this time heading to Buchanan County, Virginia. This trip is open to everyone, from 6th graders to adults.

Come join our team and help us make a real difference in someone's life – and get ready to be changed

yourself! The cost is \$375 per person for a week of serving and caring. It's a great deal for a fulfilling experience!



Seats on the bus may be limited, but we will absolutely hold space for you and your whole family! Don't delay any longer – take the leap and say "yes" to this opportunity today! If you have any questions or need more information before you commit, feel free to email Pastor Kim directly at kamitchell@firststcharlesumc.org. We can't wait to see you there!

YOUTH



**YOUTH
SUNDAY
SCHOOL**

**6TH-12TH
GRADE**

**SUNDAYS AT 9AM DOWNSTAIRS IN THE
BLUE YOUTH ROOM**

FIRST KIDS



First Kids Early Childhood Center

A ministry of First St. Charles United Methodist Church

2026-2027 SCHOOL YEAR ENROLLMENT

AGES 3-5

ENROLL NOW



636.947.9380



kjohnson@firststcharlesumc.org



SMALL GROUPS & MINISTRIES



WELCOME

JOIN OUR WELCOME TEAM! IT'S THE BEST WAY TO MEET MEMBERS & GUESTS ON SUNDAY MORNINGS!

IF YOU'RE INTERESTED, CONTACT OLIVIA!

Caregiver *Support Group*

*Third Tuesday of the month
3 pm in room 300*

QUESTIONS? CONTACT NICKI REYNOLDS:
NREYNOLDS6@CHARTER.NET



SMALL GROUPS & MINISTRIES

FISH PANTRY

ITEMS NEEDED:

CRANBERRY SAUCE, YAMS, CAN POTATOES, JELLY, TOMATO SAUCE, PASTA SIDES, BOXED MISC. POTATOES (AU GRATIN, SCALLOPED ETC.), SALTINE CRACKERS, MEN'S DEODORANT



Little Food Pantry

These are the most popular items for our pantry that serves our community -



tuna packets



granola bars



chili with beans



baked beans



fruit cups

You can drop food donations in the black bin in the atrium!

SMALL GROUPS & MINISTRIES




LGBTQ+ SMALL GROUP

BRING YOUR OWN DINNER AND
ENJOY A TIME OF FELLOWSHIP!

JULY 21
CATHERINE COLLIER ROOM
@ FIRST ST. CHARLES
6:00 PM

Showers of Blessing

**SUMMER
needs**

-  SUNSCREEN
-  HATS
-  COOLING TOWELS
-  ELECTROLYTE PACKETS



SMALL GROUPS & MINISTRIES



A vibrant graphic for a bingo event. The background is dark brown with a grid pattern. In the center, a glowing sign reads "BINGO Potluck". Surrounding the sign are several bingo balls with numbers: a red ball with "1", a green ball with "24", a blue ball with "6", a purple ball with "53", a yellow ball with "57", and a green ball with "79". There are also several bingo cards and chips scattered around. At the bottom, a blue banner contains the text "55+ EVENT" and "JULY 21ST AT 11:30AM".

BINGO Potluck

55+ EVENT
JULY 21ST AT 11:30AM



A graphic for a writing session. The background is light gray with a dashed line pattern. On the left, a vertical list of seven gray circles is shown. On the right, a vertical list of five icons is shown: a yellow star, a blue sneaker, a pink flower, and a green mug. In the center, a hand is holding a blue pen and writing on a piece of lined paper. The text "WHAT'S YOUR STORY?" is written in large, bold, black letters. Below it, the text "An 8-week group writing session on Tuesdays at 1pm beginning June 16th" and "If interested, contact Donna Carlson: donc50@sbcglobal.net" is displayed. There are also several small red hearts and gray stars scattered around the text.

WHAT'S YOUR STORY?

An 8-week group writing session on Tuesdays at 1pm beginning June 16th

If interested, contact Donna Carlson: donc50@sbcglobal.net

**SAVE
THE DATE**

**SATURDAY, AUGUST 15TH
7:30 - 9:30 PM**

the
**last
splash
of summer**

**FREE DRINKS | FREE FOOD | FREE ENTRY
THE COVE @ ST. PETERS REC PLEX**

**† FIRST ST. CHARLES
United Methodist Church**



**RED CROSS
BLOOD DRIVE**

**WEDNESDAY,
JULY 22ND**

8:30-12:30 IN THE ATRIUM



FIRST ST. CHARLES UMC

WE ARE PROUD TO BE A CHURCH THAT WELCOMES EVERYONE GOD GIVES US TO LOVE. AND WE SHARED THAT LOVE WITH OUR COMMUNITY AT ST. CHARLES PRIDE.



Let all that you do be done in love.

1 Corinthians 16:14



JUNE & July

PRIDE MONTH

SPIRE

24 - Tuesday 25 - Friday 26 - Saturday 27

VBS



Sunday 28 Monday 29 Tuesday 30 Wednesday 1 Thursday 2 Friday 3 Saturday 4

SPIRE

WHAT'S YOUR STORY

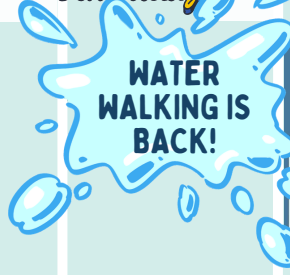
July



Sunday 5 Monday 6 Tuesday 7 Wednesday 8 Thursday 9 Friday 10 Saturday 11



WHAT'S YOUR STORY



UNITE CONFERENCE

Sunday 12 Monday 13 Tuesday 14 Wednesday 15 Thursday 16 Friday 17 Saturday 18

UNITE CONFERENCE

WHAT'S YOUR STORY



Sunday 19 Monday 20 Tuesday 21 Wednesday 22 Thursday 23 Friday 24 Saturday 25

COMMUNITY CARE
BINGO
WHAT'S YOUR STORY CAREGIVERS
LGBTQ+



SPIRE



ASP MISSION TRIP