

# The Learning Environment

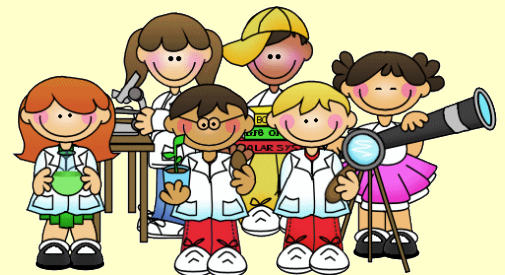
All experiences take place in a safe, Christian environment. We want children to experience God's love as they interact with a caring, nurturing staff. The world of the child will expand to include friends in the church as well as in the community.

Based on the idea that children *learn through play*, manipulatives, toys, and materials are carefully selected to foster social/emotional, spiritual, physical, and intellectual growth. They are age-appropriate and allow for the growth of each child at his/her developmental level.



Lessons are planned according to a calendar of themes/units which appeal to young children. Teachers interact with the children individually and in small and large groups. Various concepts and readiness skills are introduced at each age level.\*

The classrooms are arranged to enhance the learning environment. Centers include these areas:



- Imaginative Play (Home Living, Dress Up, Block Play, Puppets)
- Create and Discover (Art, Crafts, Science)
- Play and Learn (Manipulatives, Educational Toys)
- Quiet Area (Books/Writing/Listening )
- Technology (An iPad in each Pre-K room will be available for children to play educational apps.)

A *love of learning* is taught by allowing children to experience their own stage of development, by helping them to feel good about themselves, and by allowing them to feel success without pressure.

It is important for parents to communicate with your child's teacher, discuss needs and concerns, and share the joys. School then becomes a shared experience which hopefully will continue through each child's educational process.

\*Teachers will provide more detailed information about the curriculum for each age group.

