

Shine, Jesus, Shine

Refrain

Shine, Je - sus, shine, — fill this land with the Fa - ther's glo - ry,



blaze, Spir - it, blaze, — set our hearts on fire;



flow, riv - er, flow, — flood the na - tions with grace and mer - cy,



send forth your word, — Lord, and let there be light.



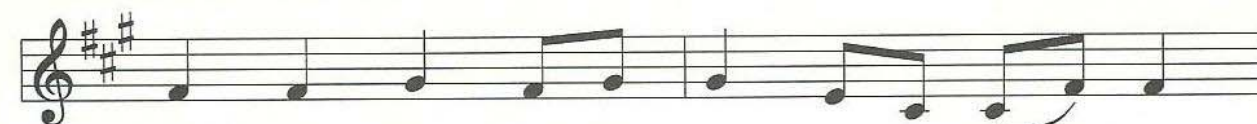
1. Lord, the light of your love is shin - ing
2. Lord, I come to your awe - some pres - ence
3. As we gaze on your king - ly bright - ness,



in the midst of the dark - ness shin - ing;
from the shad - ows in - to your ra - di - ance;
so our fac - es dis - play your like - ness;



Je - sus, Light of the World, shine up - on us,
by the blood I may en - ter your bright - ness,
ev - er chang - ing from glo - ry to glo - ry,



set us free by the truth you now bring us.
search me, try me, con - sume all my dark - ness.
mir - rored here may our lives tell your sto - ry.

D.C.



A musical score on a single staff with a treble clef and a key signature of two sharps (F# and C#). The melody consists of eighth and quarter notes with lyrics underneath. The lyrics are arranged in three lines: 'Shine on me,', 'shine on me.', and 'shine on me.'. The first line has a dotted quarter note for 'me,'. The second line has a quarter note for 'me.'. The third line has a quarter note for 'me.'. There is a repeat sign after the first line and a double bar line after the second line. The piece ends with a double bar line and a repeat sign.

Shine on me,
Shine on me,
Shine on me,

shine on me.
shine on me.
shine on me.