

## THANK YOU!



Thank you for all the cards, phone calls and comforting words during my brother, Joe Kline's passing on February 2nd. Until a person experiences the loss of a loved one can we understand the compassion extended by our church family which meant so much to us. The communion served at our home by Steph Rabe accompanied by Diana Lovett certainly gave us the closure we needed. Blessings to all at Christ United.

Jim & Joyce Piatt



Christ Church Worship Service videos can be found on our website: [www.christchurcheastmoline.org](http://www.christchurcheastmoline.org) under the **News and Media** tab and on **YouTube** under **Christ Church Quad Cities**



The deadline for the April issue of the church newsletter is **Tuesday, March 15th**. Please submit all articles to the church office (preferably by email) by then.

The office email address is [office@christchurcheastmoline.org](mailto:office@christchurcheastmoline.org)  
**Thank you!**



## Hallelujah Candle

Light the Hallelujah Candle in honor of a loved one or event! Examples may be birthdays, anniversaries, memorials, births, graduations, special events. As a fundraiser for building improvements or mortgage payoff, you may light the candle for Sunday worship. Your honoree will be mentioned in the Sunday announcements and the mid-week news.

Name \_\_\_\_\_ Phone \_\_\_\_\_ Date you'd like candle lit \_\_\_\_\_

Hallelujah Candle Honoree \_\_\_\_\_

Please select which campus you would like the candle lit:  East Moline  Silvis  Carbon Cliff  
(1 candle \$15, 2 candles \$30, 3 candles \$50)

Please select where you would like your contribution \$ to go:  FLC Mortgage  FLC Furnishings  Silvis Flooring  East Moline Landscaping  Carbon Cliff Building

Please attach payment to this form. Checks payable to CUMC, memo Hallelujah Candle. Place in the offering plate or drop off/mail to the church office.

### Christ United Methodist Church

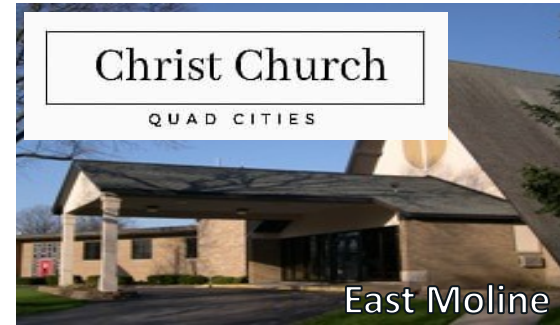
**East Moline Campus:** 3801 7th Street, East Moline, IL 61244  
**Silvis Campus:** 1301 2nd Avenue, Silvis, IL 61282

**Carbon Cliff Campus:** 106 2nd Street, Carbon Cliff, IL 61239

Phone: 309-755-2508 Fax: 309-755-8081  
email: [office@christchurcheastmoline.org](mailto:office@christchurcheastmoline.org)  
Website: [www.christchurcheastmoline.org](http://www.christchurcheastmoline.org)

#### Ministry Leadership Team

**Ministers of the Church** — Congregation  
**Stephanie Rabe**—Parish Nurse  
**Lindrew Johnson**—Music Ministry  
**Melissa Chapman**—Finance Administration Manager  
**Jana Kindred**—Administrative Assistant  
**Pastor Marty Ellison**—Campus Minister, Carbon Cliff Campus  
**Rev. Gabe Wanck**—Associate Pastor  
**Rev. Sarah Wanck**—Lead Pastor



## CHRIST CHURCH

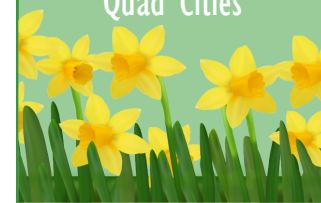
### INDOOR WORSHIP

SUNDAYS  
EAST MOLINE CAMPUS  
8:00 AM, 9:00 AM  
& 10:35 AM  
SILVIS CAMPUS  
10:45am  
CARBON CLIFF CAMPUS  
11:00am

Facebook Page  
Christ Church  
Quad Cities

Website  
[www.christchurcheastmoline.org](http://www.christchurcheastmoline.org)

YouTube Channel  
Christ Church  
Quad Cities



### From Death, There is Life

MARCH 2022

Earth to Earth.  
Ashes to Ashes.  
Dust to Dust.

That time of year is beginning to spring forth from the earth. When we watch for signs of life to emerge from the cold of winter and shoot up with springs of green. We'll eagerly look for buds on the barren branches of our trees, and maybe begin imagining the seeds we'll place in the ground for the abundance of harvest later this year. Some will wait for the safety of a few more weeks of warmth. Others will start their seedlings under the well-watched roofs of their garage and kitchen windows. But the time is close, and the signs of life are coming.



Pastor Sarah Wanck

But they're born out of the ashes of earth. The life of spring is birthed through the dust of the ground. The earth, the dirt, is a place of death. We bury our dead in it. We sprinkle their ashes on its surface. Even the dirt itself is but the death of leaves and wood, the decomposition of organic matter. But something mysterious and divine works through the composition of that dust and ash that allows life. As spring slowly arrives I hear the words of our funeral liturgy, the words of our "Service of Death and Resurrection"... "In the midst of life, we are in death."

It has taken on new meaning for us in this year, that death is necessary for life; the ground becoming a grave for each seed that it bears - and from which life will emerge. In this season of Lent, as we celebrate the ashes of confession on Ash Wednesday, that is what we remember and linger in. It is through death, we find life.

*"He has saved us and called us to a holy life—not because of anything we have done but because of his own purpose and grace. This grace was given us in Christ Jesus before the beginning of time, but it has now been revealed through the appearing of our Savior, Christ Jesus, who has destroyed death and has brought life and immortality to light through the gospel."* (2 Timothy 1:9-10)

Throughout the season of Lent, we are reminded that life is only possible by the death of a Savior. That our life is only found when we hide ourselves in his death and resurrection. That we will only find the life of transformation as we put our sin, shame, and self to death. And the resurrection to eternal life is only found in the ashes of the cross.

Earth to Earth.  
Ashes to Ashes.  
Dust to Dust.

May this season of Lent, the reminders of death it brings, as it stands against the background of the life of spring, place you in deeper pursuit of the death and resurrection of your Savior, and the death of our "selves" that are necessary to experience the fullness of the freedom Christ brings. For from death, there is life.

Pastor Sarah

# what's happening?



scan me!

Christ United Methodist Church  
3801 7th St, East Moline, IL

UNITED MARRIAGE ENCOUNTER PRESENTS

**fighting the drift in marriage**

March 4-5

[www.unitedmarriage.com](http://www.unitedmarriage.com)

## UNITED MARRIAGE ENCOUNTER PRESENTS fighting the drift in marriage

Kendall and Cathy Thomas & Steve and Pam Chapman

**March 4 - 5**

Marrriages can drift. Passion is lost, visions disappear, the decision to love is forgotten. Let's consider together: What are the simple things that cause us to drift? Comfort? Denial? Self-centeredness? Busyness? Pride? Unforgiveness? It could be any of these. Satan loves to use them all.

This Event has been developed for couples (encountered and non-encountered) to help recognize the signs of drifting and to give ideas on how to bring your relationship back together spiritually, relationally, and romantically.

**LOCATION:** Christ United Methodist Church  
3801 7th Street, East Moline, IL

**COST:** \$50 total (\$15 registration + \$35 paid directly to Prepare and Enrich for your individualized assessment via link sent after registration)

**Friday:**  
This session is directed toward the UME Community, but everyone is welcome to attend.  
7:00 Worship and Devotions  
7:30 Drifting in Community Care  
8:45 CORE  
9:45 Fellowship

**Saturday:**  
9:00 Review of Prepare and Enrich Assessment Results  
10:00 Break  
10:25 Drifting Spiritually  
11:30 Forgiveness  
12:00 Lunch  
1:15 Drifting in Communication  
2:15 Break  
2:30 Drifting Romantically  
3:45 Worship  
5:00 Date Night

REGISTER AT [UNITEDMARRIAGE.COM](http://UNITEDMARRIAGE.COM)



scan me!



We are SO excited to be hosting a special event for you and your marriage! A day of learning, listening, and connecting around communication, romance, forgiveness & spirituality. Scan the QR code, or head to [unitedmarriage.com](http://unitedmarriage.com) to register for this special March 5th event! (The event is one or two day optional - whatever you can do!)

See you there!

# Merry Sunshine News



This past month at Merry Sunshine we have had the joy of performing for the parents and our Winter Program went wonderfully! Thank you to Pastor Sarah and Pastor Gabe who welcomed the families with a warm welcome and prayer. We also want to thank the church staff for all their help in making this program happen smoothly. February has brought lots of talk about love and God's love for us and for his children. We were able to have Valentine's parties in each class, welcoming the families once again. These past few weeks have brought so many compliments from the families about how lovely the Winter Program was and how thankful they were that the church helped bring these two events together. We continue this month of "heart month" as we have Nurse Steph talk about the heart and have some interesting props for the kids to see! Our focus is on how to stay healthy by eating the right foods, exercising and learning how doctors and dentists help us keep our bodies healthy.



Thank you for praying for our program! We feel the blessings pouring in everyday! A special thanks to the staff for loving us this past week with some coffee gift cards (because teachers always need coffee).

Much love,  
Ms. Sarah ~ Ms. Peggy ~ Ms. Romanie ~ Ms. Kellie ~ Ms. Roxi



## From Our Parish Nurse



March starts the season of Lent, a journey of preparation following the way of Jesus. Lent should test and improve our mental and spiritual health. Often we need to retrain our souls, bodies, thoughts, and senses to God's beautiful grace. The UMC.org website had a great article on four ways to observe Lent. These four ways can align our hearts with God's heart as we focus on Easter.

**Give It Up.** Consider giving up something that distracts you from meaningful relationships. Be honest with yourself on the amount of screen time you use in your waking hours-both computer and television. Is your phone "glued" to your hand? Commit to connecting to one person each day: less Facebook time and more Face-time with people.

**Plug-In.** What can you add to your day to connect to God? It can be as simple as taking time to read and digest a devotion daily. Read a book of the Bible. Pray more and give God thanks. Find and reflect on three things every day to be thankful for. Be kind and encourage others and yourself daily. Move more and use this time to talk and listen to God; the walking track at church is a great place to walk and be with God. Sign up for a Bible study (I'll Have it God's Way, Panera Pals are two ways to connect at Christ Church) or join a small group.

**Serve.** Start a new routine of volunteering or service. Read to students-United Way is looking for volunteers. Visit a nursing home. Find a way to give of yourself.

**Share It.** Let others know how you are observing Lent. Share your practices. Share your faith; be open to the possibilities that God will open up for you. Attend worship.

May we all as Sisters and Brothers in Christ be fully focused and prepare our way to Easter. Dr. Joe Gardiner reminded us often of his favorite phrase regarding God, "Remember the Resurrection!"

In Faith, Hope and Love,  
Steph



## CALLING ALL WOMEN TO BECOME A GIDDYUP GAL!

A Saturday morning, woman encouraging woman fellowship... with fun, food, and faithful thoughts!

Get out of the house, bring your smile and join us on **Saturday, April 30th at 10:00 a.m.**

There will be a light brunch served. Games will be played and everyone will win a prize.

Call church office or Donna at (309) 912-8454 to make your reservation .

"Saddle up for Giddyup Gal 2.0. This is gonna be fun!!!"



# UNITED METHODIST WOMEN-EAST MOLINE

Our February gathering was where we looked at the joys in our life. The gratitude and prayer reflections were presented by Michele Diefenbach. We also acknowledged and installed the 2022 Unit Leadership Team.



Our small group Circles will meet at East Moline Campus in Fellowship Hall on Wednesday, March 2; Glory Circle at 9:30 a.m. and Patience Circle at 1:30 p.m. Open to all lady visitors.

Our Unit meeting will be held in Fellowship Hall on Tuesday, March 22 at 1:00 p.m. Stephanie Rabe, our Parish Nurse, will discuss "Doing It God's Way". We invite all women to these gatherings to share in fellowship, refreshments and maybe pick up a tip or two of God's journey for ourselves.

We continue to focus on our missions for the community and church with our 'Mission Box' of gratitude gifts each month. A few of our 2021 gifts, given by members of UMW and our supporters in Christ UMC allowed us to send gifts to: Youth Hope (\$1,700), UT High School (cash, cards, donations \$1,743) and Mission Trip for Marty Ellison and daughter (\$400), to name a few.

Morning Connection on March 16 in Fellowship Hall will present the skit "A Day in the Life of Marjorie Overload". Reservations needed.



- March 2—9:30am, Glory Circle  
12:30pm, Patience Circle. Both Fellowship Hall
- March 3— Rotary
- March 4— Church Women United "World Day of Prayer" at Christ Church, East Moline
- March 10— Rotary
- March 16— Morning Connection 9:15am
- March 17— Rotary
- March 22— 11:00am, UMW Leadership Meeting  
1:00pm, UMW Meeting. All women welcomed
- March 24— Rotary
- March 26— 10:00am, UMW District Personal Growth  
1:00pm, District Spring Meeting at Christ Church, East Moline
- March 31— Rotary

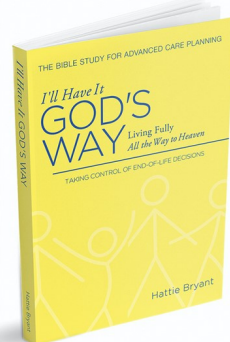


Under the leadership of Diana Sutton, members of the East Moline Campus UMW Glory Circle help with the Rotary Luncheon in Fellowship Hall. Pictured are Michele Diefenbach, Pat O'Brien, Alice Haben and Diana Sutton. Many more women are involved in this mission. More volunteers are needed for this five hour commitment, once a month. Please call 309-517-1286 if you care to join us.

**EVERY BLOOD DONOR IS A HERO**



Thank you to all of you that signed up and donated blood on February 19th. We had 16 donors! Blood is much needed at this time and so important to our community. Thank you!



**I'll Have it God's Way** class will start on Monday, March 7th. This is a great Bible Study (Plug-In as a way to observe Lent) a Christian's guide to end of life decisions. Please call Steph Rabe if you are interested in joining in!

## News to Know

### FOOT CLINIC

The next foot clinic is **April 11th from 9 am to 11:30am** at the East Moline Campus. The cost is \$30. Please bring two clean towels to your visit. Reservations are required. Please call Steph to grab a time slot.

It is ok to pamper our feet and keep them healthy!

Thank you!

Steph Rabe, Parish Nurse



### Seedbed

Pastors Sarah & Gabe would like for you to check out Seedbed.com.

"WHAT IS SEEDBED? Seedbed is a twenty-first century movement and media platform whose mission is to gather, connect, and resource the people of God to sow for a great awakening."

Once on the site, go to the Daily Text and subscribe to sign up for daily devotionals and more. They offer a podcast as well!

Check it out!

### prayer requests

#### Are You Missing the Prayer Requests?

In order to make sure we are sending out "wanted" e-mails, we have eliminated sending prayer requests to our entire distribution list. If you would like to continue to receive and pray over the prayer requests, you must "opt in" to be on our prayer team. This does not commit you to anything, other than to pray! If you would like to be included, please call or e-mail the church office. We'd be happy to add you to the list. Our phone is 309-755-2508 and our e-mail address is [office@christchurcheastmoline.org](mailto:office@christchurcheastmoline.org).

Thank you!



### CHRIST CHURCH NURSERY NEWS

The Nursery at the East Moline Campus is open on Sunday Mornings for ages infant through 5 years during the 9am and 10:35am service times. Please spread the news!

