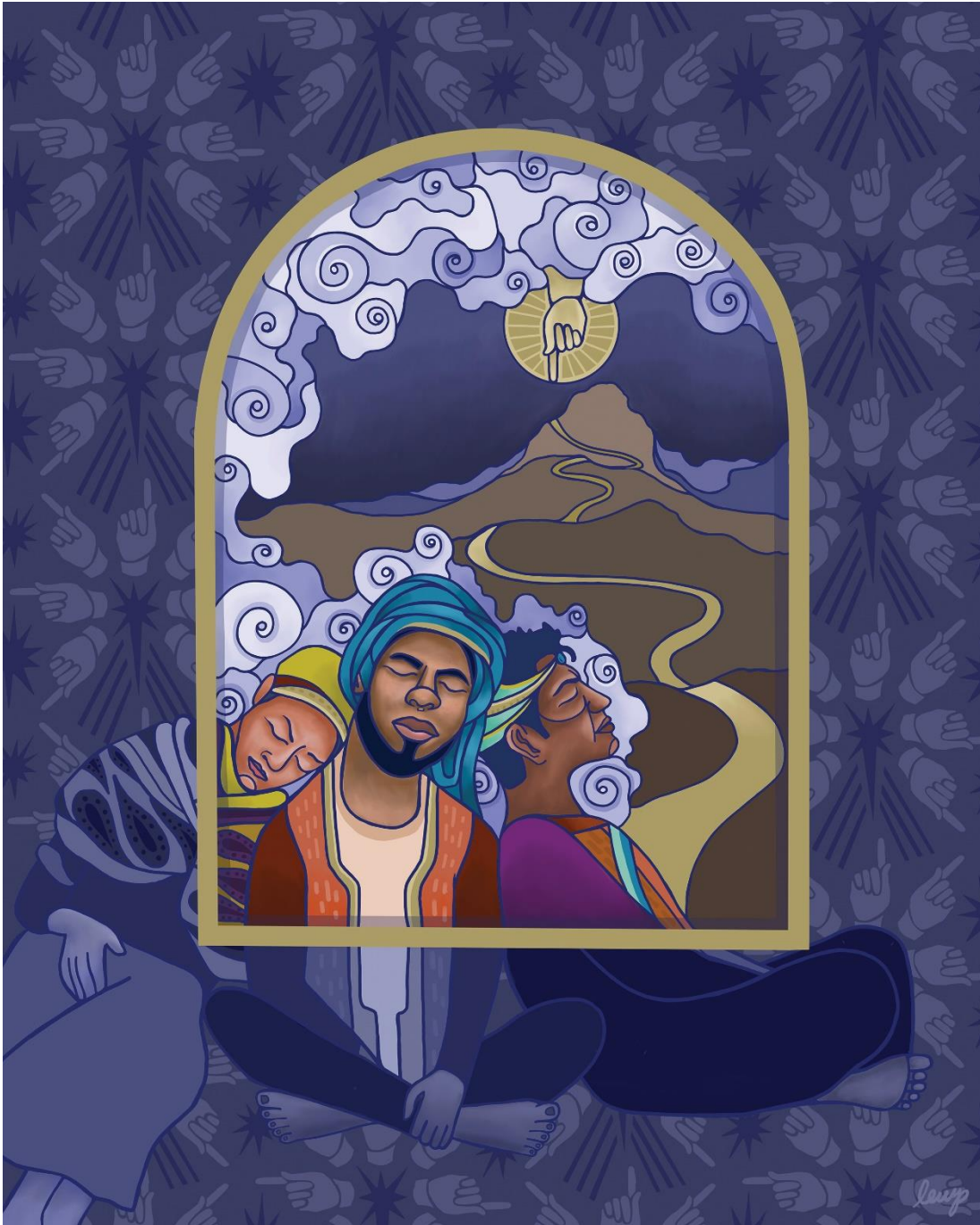


# Newman Congregational Church, UCC

“No matter who you are, Or where you are on life’s journey ... You’re welcome here!”

An Open and Affirming Congregation of the United Church of Christ

[newmanucc.org](http://newmanucc.org)



**EPIPHANY SUNDAY**  
**JANUARY 9, 2022**

PRELUDE

Duo from Suite du Premier Ton

Louis-Nicolas Clérambault  
(1676-1749)

WELCOME

CALL TO WORSHIP – *responsive*

One: We come to this place —

*Many: each of us on our own path.*

One: The path is winding,

*Many: and the path is not always clear,*

One: and the path changes,

*Many: but we are here.*

One: God is walking us home.

*Many: What a gift it is  
to not walk alone.*

One: Let us worship Holy God.

CALL TO CONFESSION

PRAYER OF CONFESSION - *in unison*

*God of changed plans,*

*The Magi heard in a dream that they were to take a new way home—a different path, an untraveled road. And to our amazement, they did just that. The Magi packed their bags and went home by another way.*

*We wish that change could be easy for us, but more often than not, when whispers of change come, we tend to clench our fists and hold on tighter.*

*Forgive us for resisting change that might be holy.*

*Forgive us for ignoring that there is more than one road home.*

*Forgive us for failing to hear your invitation.*

*Guide our steps to unfamiliar places.*

*Gratefully we pray, amen.*

WORD OF FORGIVENESS

HYMN

Many Are the Lightbeams

NCH #163

Many are the lightbeams from the one light.

Our one light is Jesus.

Many are the lightbeams from the one light;  
we are one in Christ.

Many are the branches of the one tree.

Our one tree is Jesus.

Many are the branches of the one tree;  
we are one in Christ.

Many are the gifts given, love is all one.  
Love's the gift of Jesus.  
Many are the gifts given, love is all one;  
we are one in Christ.

Many ways to serve God, the Spirit is one;  
servant spirit of Jesus.  
Many ways to serve God, the Spirit is one;  
we are one in Christ.

Many are the members, the body is one;  
members all of Jesus.  
Many are the members, the body is one;  
We are one in Christ.

## TIME WITH CHILDREN

### SCRIPTURE

Matthew 2: 1-12

(NRSV)

In the time of King Herod, after Jesus was born in Bethlehem of Judea, wise men from the East came to Jerusalem, asking, "Where is the child who has been born king of the Jews? For we observed his star at its rising, and have come to pay him homage." When King Herod heard this, he was frightened, and all Jerusalem with him; and calling together all the chief priests and scribes of the people, he inquired of them where the Messiah was to be born. They told him, "In Bethlehem of Judea; for so it has been written by the prophet:

'And you, Bethlehem, in the land of Judah,  
are by no means least among the rulers of Judah;  
for from you shall come a ruler  
who is to shepherd my people Israel.'"

Then Herod secretly called for the wise men and learned from them the exact time when the star had appeared. Then he sent them to Bethlehem, saying, "Go and search diligently for the child; and when you have found him, bring me word so that I may also go and pay him homage." When they had heard the king, they set out; and there, ahead of them, went the star that they had seen at its rising, until it stopped over the place where the child was. When they saw that the star had stopped, they were overwhelmed with joy. On entering the house, they saw the child with Mary his mother; and they knelt down and paid him homage. Then, opening their treasure chests, they offered him gifts of gold, frankincense, and myrrh. And having been warned in a dream not to return to Herod, they left for their own country by another road.

## PRAYER FOR ILLUMINATION

### SERMON

"Home By Another Way"

### HYMN

Home By Another Way

Magi from a faraway place  
Radiant starlight setting their pace  
Fording wadi, risking body  
Seeking the king's birthplace

◁Refrain▷

O, We have traveled night and day  
Meeting God where e'er we stay  
Paths are changing, rearranging  
As we find another way

Threatened by the good news they bring  
Herod plots to kill the new king  
Angels warning in the morning:  
"Avoid Jerusalem"  
◁Refrain▷

Plans that change and storms that delay  
Dreams and hopes left in disarray  
Make us tremble, but remember  
There is another way

## CALL TO OFFERING

*Contributions may be mailed to Newman UCC at PO Box 4764, Rumford, RI 02916  
or made online at [newmanucc.org/give](http://newmanucc.org/give)*

## PRAYER OF DEDICATION

## COMMUNION

## GREAT PRAYER OF THANKSGIVING

## SHARING OF THE BREAD AND CUP

## ANTHEM

I want to walk as a child of the light

Kathleen Thomerson  
(b. 1934)

## PRAYERS OF THE PEOPLE

*Prayer Requests may be submitted online at [newmanucc.org/prayers](http://newmanucc.org/prayers)*

## LORD'S PRAYER – in unison (using "Debts" and "Debtors")

*Our Father, who art in heaven, hallowed be thy name. Thy kingdom come. Thy will be done on earth as it is in heaven. Give us this day our daily bread. And forgive us our debts, as we forgive our debtors. And lead us not into temptation, but deliver us from evil. For thine is the kingdom, and the power, and the glory, for ever. Amen*

## HYMN

As With Gladness Those of Old

NCH#159

As with gladness those of old  
did the guiding star behold;  
As with joy they hailed its light,  
leading onward, beaming bright;  
So, true Morning Star, may we  
evermore your splendor see.



## ON THE CALENDAR

- Racial Justice Book Discussion – **Monday**, January 10 from 7-8:30pm
- Bread of Life Food Pantry – **Tuesday**, January 11 from 5-7pm
- Widow’s Might Zoom Meeting – **Thursday**, January 13 from 11am-Noon
- Bible Study via Zoom – **next Sunday**, January 16 @ 9am
- Church School via Zoom– **next Sunday**, January 16 @ 9am
- Morning Worship - Hybrid\* – **next Sunday**, January 16 @ 10am
- Racial Equity Team Zoom Meeting – **next Sunday**, January 16 @ 6:30pm

\*Hybrid = offered in-person + via Zoom (programs) or Live Streamed/YouTube (worship)

Moderator, Patt Bowman can be reached at 401-487-8562

Newman UCC’s Care Team can be reached at 401-434-4742 X3

For pastoral emergencies, Rev. Timothy Sylvia can be reached at 401-340-6626

Michelle White, Church Office Manager can be reached at 401-434-4742 X10 or

[newmanucc1643@gmail.com](mailto:newmanucc1643@gmail.com).

## MISSION STATEMENT

*We are an inclusive Christian community dedicated to living Jesus’ message of love, peace and justice through joyful worship, compassionate service, radical hospitality and responsible stewardship.*