

PRESCHOOL:

WHO IS WATCHING MY KIDS?

Loving, caring volunteers with an approved background check who enjoy serving our 3 and 4 year olds.

WHICH ROOM WILL MY CHILD ATTEND?

There are two Preschool Rooms: FISH & WHALES. Preschool Room assignments are made by birth date at check-in. Must be potty-trained to attend Preschool classes. Promotion between classes happens each year in August...we follow the Bossier parish school systems' birthdates for promotion. We DO NOT promote mid-year.

WHERE DO PRESCHOOLERS MEET?

We meet in the former Farmer's Almanac storefront across from the Regal Louisiana Boardwalk. All of our rooms are cleaned and toys are sanitized before kids arrive. We use play panels to provide an enclosed, safe environment for our preschoolers.

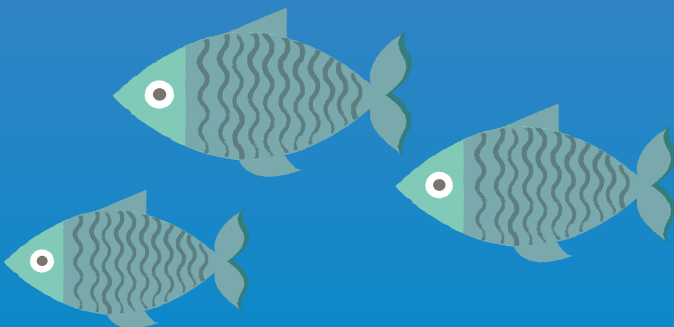
WHAT HAPPENS IN THE PRESCHOOL ROOMS?

We use animated videos to teach the daily Bible story in a fun and creative way. We also use interactive activities, games, crafts, and songs to help reinforce the daily Bible point.

WHEN?

Rooms are open for drop-off 15 minutes prior to the start of each service. For your convenience there are check-in kiosks located in all of the Simple Kid areas. Check-in volunteers are available if you have questions.

FISH



 **SIMPLE Kids**

WHALES

