



**Faith Lutheran Foundation, Inc.**  
Investing in Faith

### FROM THE BOARD

There are few things in life that can offer a greater return than investing in Faith.

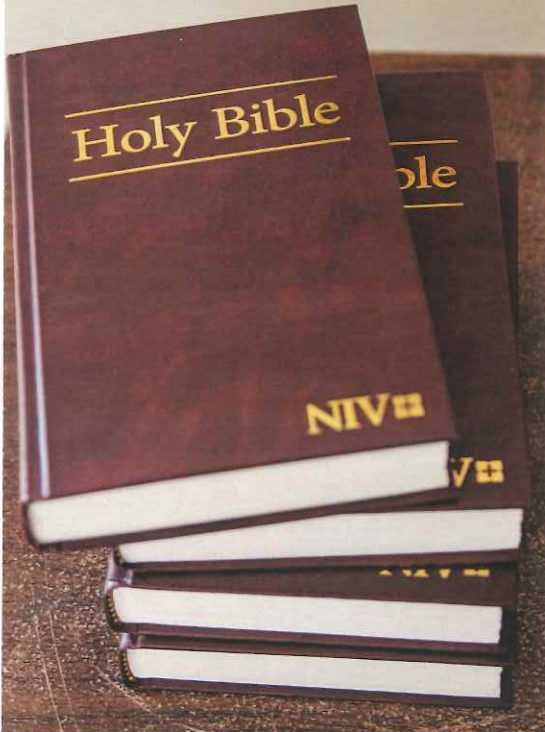
Investing in the Faith Lutheran Foundation is a way for you to invest in the present and the future. With a number of established endowments that benefit our church, our future sanctuary, and our growing school, you have the unique opportunity to pledge your support and see God's gifts making a difference.

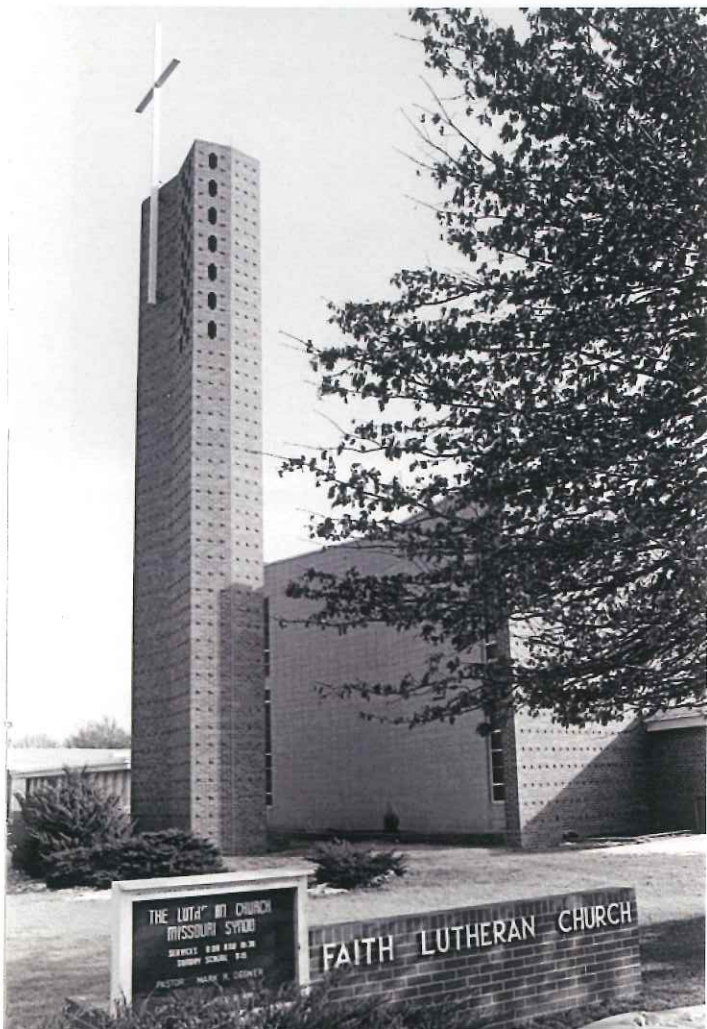
If there is something near and dear to your heart, the Faith Foundation board can help you create a new endowment, such as the recently established Youth Fund created by John Fischer in 2011 and the Special Needs Endowment created by retirees Cassie McMahan, Cathy Niemeyer, and Stuart & Sheri Tietz in 2014.

Whether you are thinking about giving a small sum on an annual basis, or making a large one-time donation, the Foundation Board is here to serve you. Our job is to make sure your gift is used to your specifications so you can continue to see the impact for years to come.

It is an exciting time here at Faith Lutheran Church and School. We are growing and changing, welcoming new members, and seeing our school recognized for excellence on a national level. We need your help to continue this positive trend and hope you consider making this the year you begin investing in Faith.

*-The Faith Foundation Board*





## Faith Lutheran Foundation, Inc.

### WHO WE ARE

In 1976, the Faith Lutheran Foundation, Inc. began with a \$2,000.00 gift from Mr. William Rossler in memory of his son LaMonte Rossler. Since then, the Faith Foundation has provided a perpetual fund for the use and benefit of Faith Lutheran Church. From that small beginning over 39 years ago and with additional financial gifts from members throughout the years, the Foundation continues to grow. While the principal of this fund is never spent, the earnings are used for the benefit of Faith Lutheran Church and School, and other religious or charitable organizations.

### WHAT WE DO

The Faith Foundation Board is a group of six elected members of Faith Lutheran Church and the senior pastor. The Board decides how earnings are distributed from the Faith Foundation Fund. It also monitors all endowments and facilitates the disbursement of earnings from the endowment funds. In addition, the Foundation Board members promote giving and long term investment for the benefit of the church and school. Board members are available to answer your questions or assist you in setting up new endowments.

# Church Endowments

## Faith Church Endowment Fund

Earnings are given yearly to the church spending plan.

## Faith Missions Endowment Fund

The Ministry of Outreach determines the recipients.

## Faith Youth Endowment Fund

The Faith Youth Ministry receives the annual earnings.

## New Sanctuary General Fund

All monies from this account will be used for building expenses such as architect fees, labor costs, materials, etc.

## New Sanctuary Interior Fund

All monies from this account will be used for interior furnishings in the new sanctuary.



## Education Endowments



### **Edgar and Marguerite Schmidt Scholarship Fund**

The Ministry of School Education approves scholarships for future LCMS pastors or teachers.

### **Faith Lutheran School Endowment Fund**

The Ministry of School Education and Principal of Faith Lutheran School determine how the earnings will be used.

### **Faith Tuition Endowment Fund**

Faith Lutheran School receives the annual earnings to be used for students in need of financial assistance.

### **Carnes Scholarship Fund**

75% is available to a Faith member preparing for full-time ministry in the LCMS. The other 25% of earning can be used by the school staff for continuing education.

### **Special Needs Endowment**

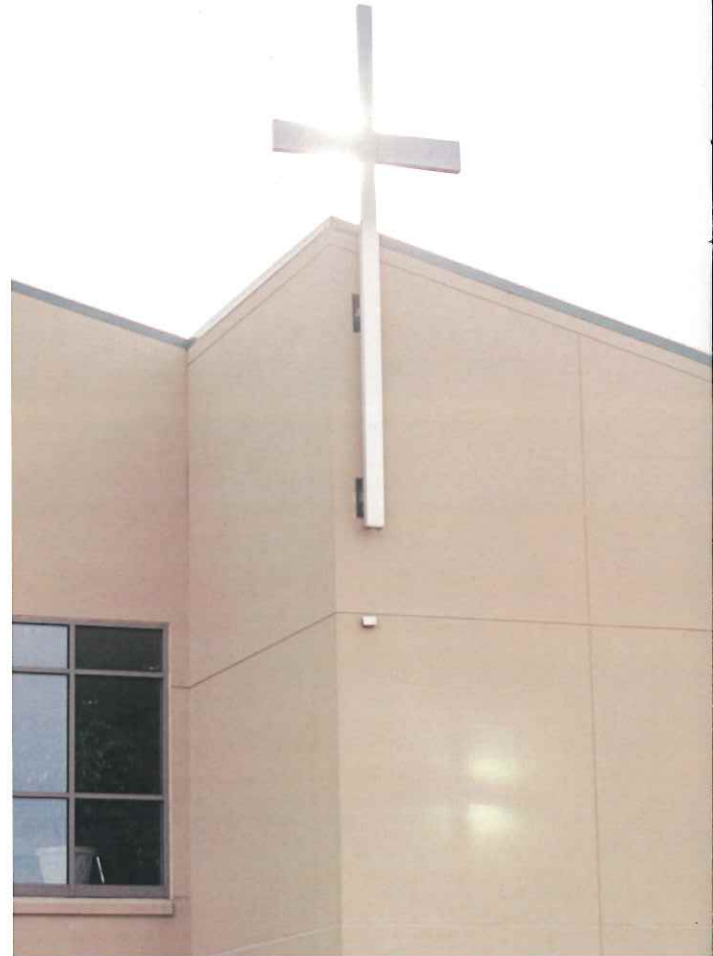
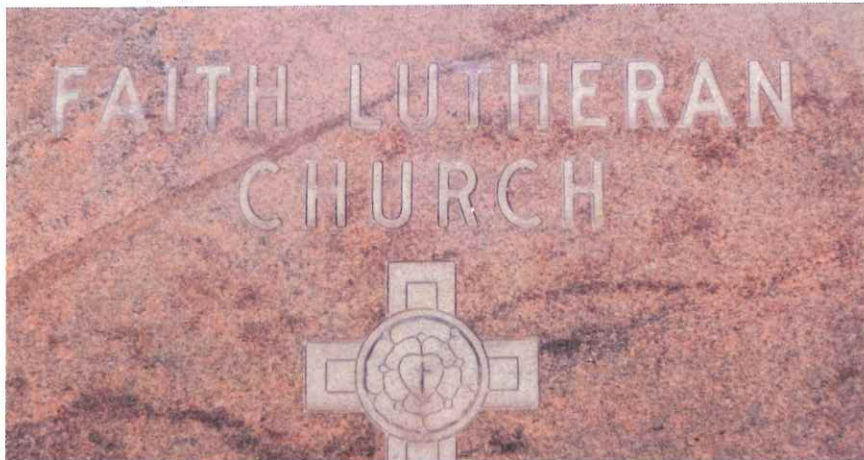
Earnings will provide assistance for children with special needs and be used for educational programs at Faith Lutheran School.



## The Faith Foundation Fund

The Faith Foundation Fund supports Faith Lutheran Church and School by providing additional financial assistance. A few examples are:

- Purchasing furnishings and equipment
- Defraying costs for guest speakers
- Supporting the Lincoln Lutheran Gala
- Ministry outreach—Grand Island, Hurricane Katrina, North Dakota Relief Fund
- Lawn mower purchase
- Equipment for the kitchen

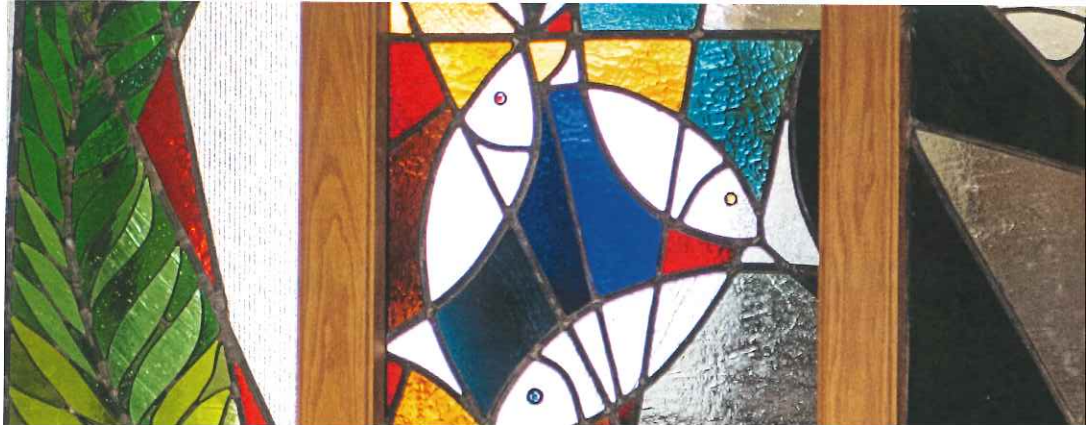


- Quarterly Faith Foundation Envelopes
- Memorials
- Bequests and wills
- Securities and Real Estate
- Life Estate Contracts
- Deferred Gift Annuities
- Life Insurance
- Charitable Remainders
- Short Term Trust Funds

## How to Give

All gifts to Faith Lutheran Foundation, Inc. are charitable contributions, and as such, are tax deductible for Federal and State tax purposes. Contributors are urged to consult with an attorney or tax consultant before completing arrangements for major gifts.

There are a variety of options and several established funds to choose from. Whether you decide to give on a regular basis or through your will and estate planning, your gift will be one that keeps on giving for years to come.





# Faith

8701 Adams St  
Lincoln, NE 68507

402.466.6861  
[www.faithlincoln.org](http://www.faithlincoln.org)