



HIGHFIELD

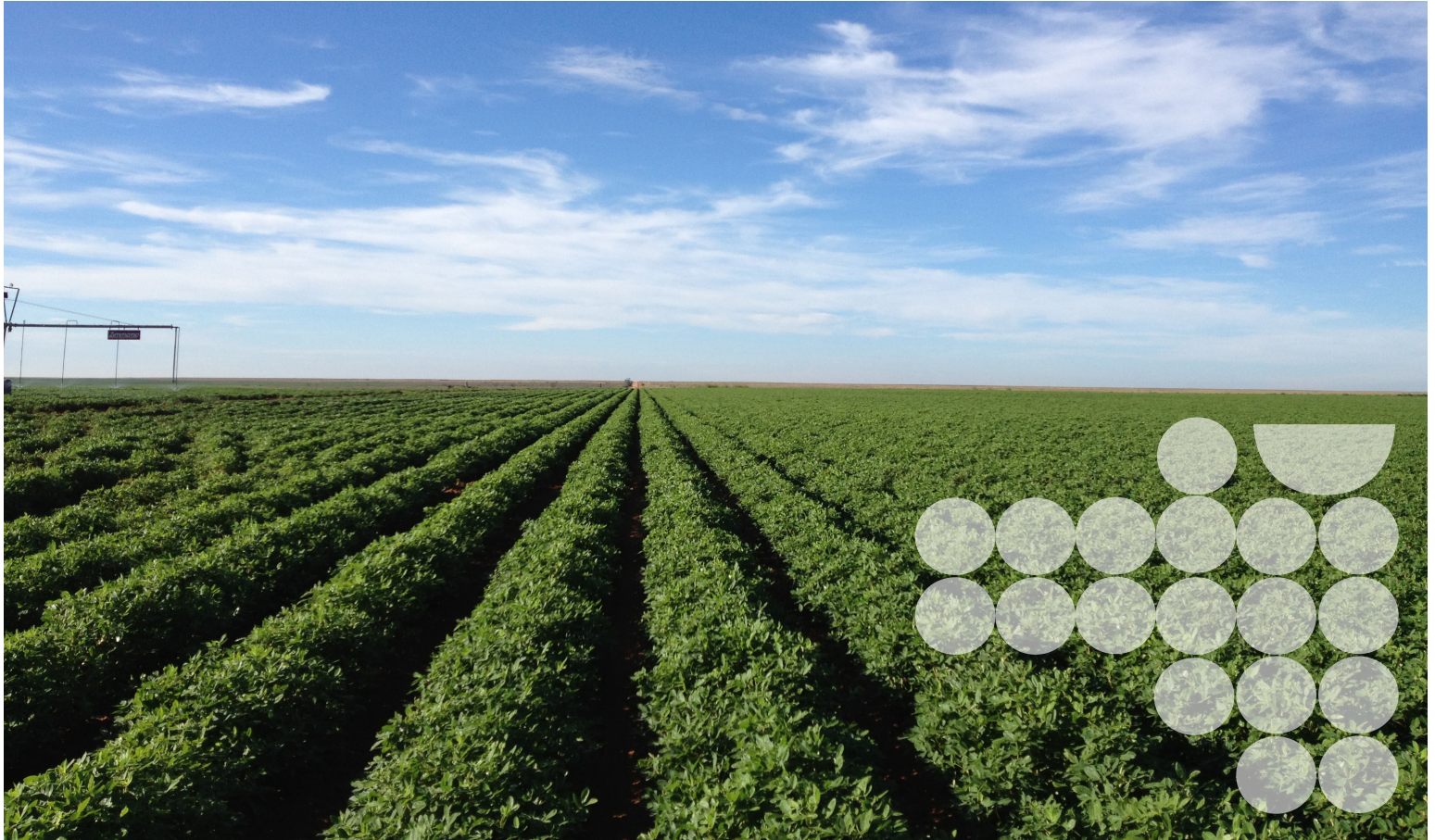
FARM ASSET SERVICES, LLC

KYLE AMOS
Texas Broker License #578479
806.316.5055
kamos@highfieldfas.com

A TEXAS PREMIUM WATER RESOURCE WITH PERSISTENT CONSERVATION

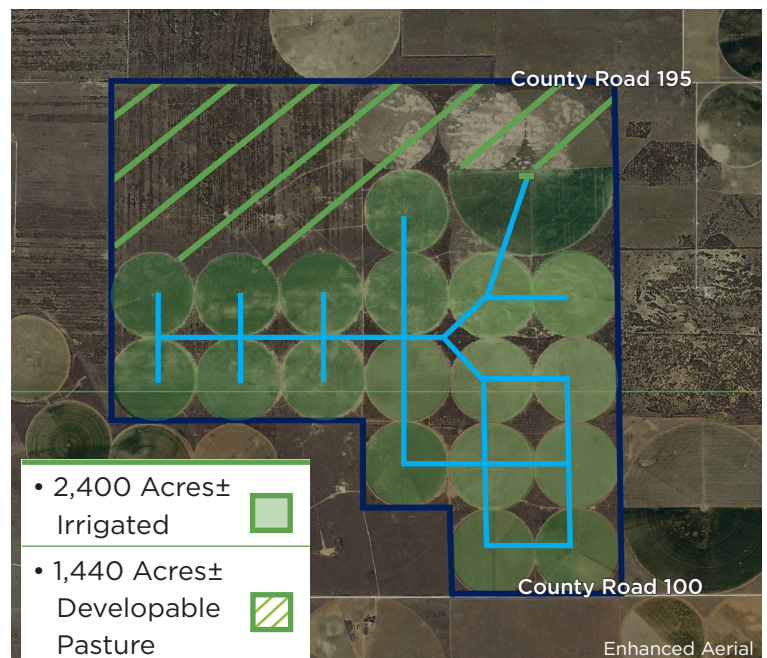
BRONCO PERMIAN FARM

Yoakum County, Texas • 4,640± Acres • \$5,300,000



BRONCO PERMIAN FARM • YOAKUM COUNTY, TX

Gross Acreage	4,640±
Pivot Irrigated Cropland	2,400±
Native Pasture	1,440±
Pivot Systems	19
Irrigation Wells	60±
Structural Improvements	None
Primary Crops	Cotton, Wheat, Peanuts
Topography	Level to Slightly Rolling
Utilities	LCEC Electricity

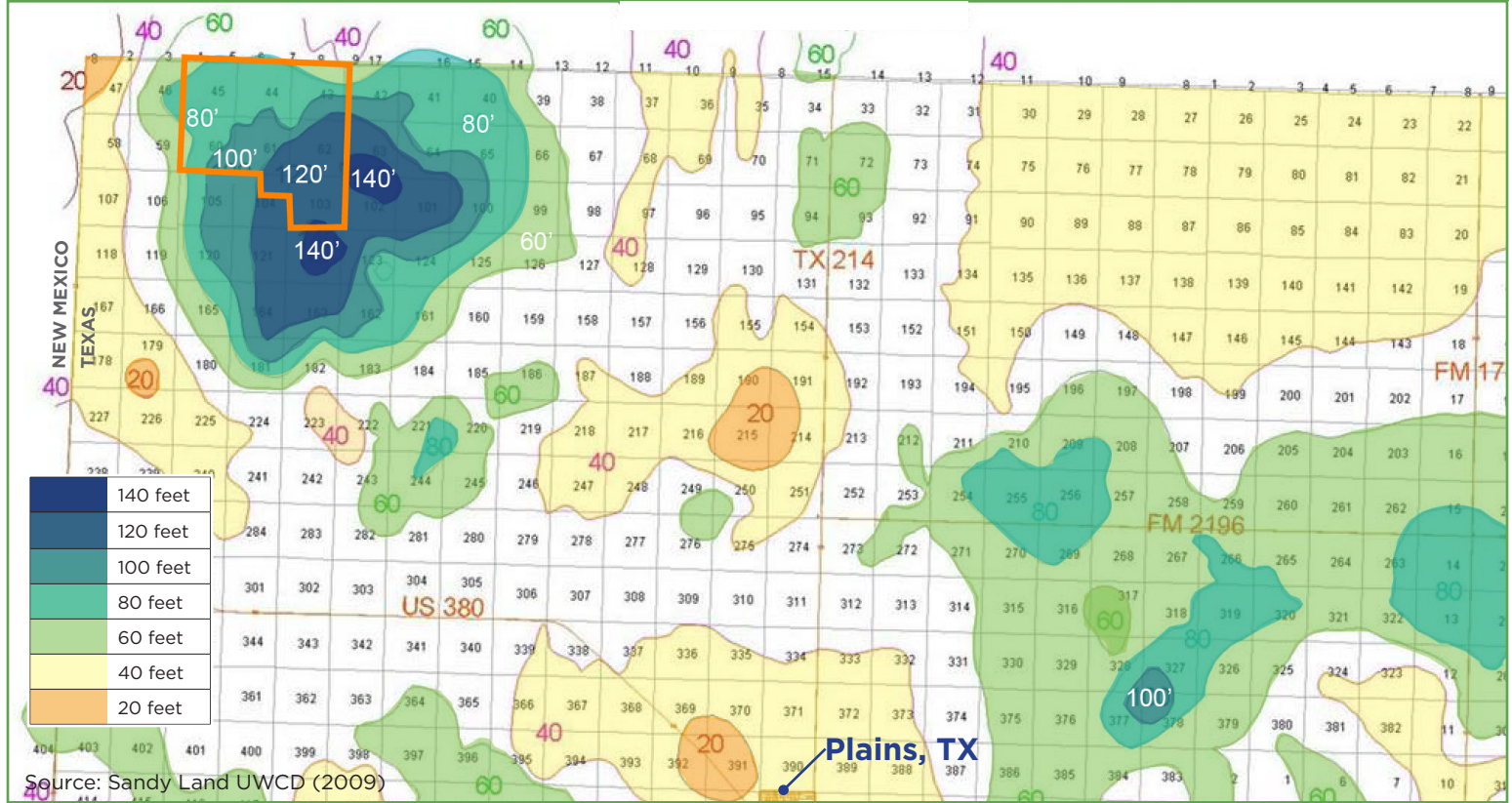




HIGHFIELD

FARM ASSET SERVICES, LLC

AQUIFER SATURATED THICKNESS MAP - YOAKUM CO.



INVESTMENT HIGHLIGHTS

- Excellent location over water resource
- Largely contiguous property
- Superb Permian Basin location
- New substation
- All electric irrigation
- Irrigation systems tied together – connected through main line
- Remaining pasture land ready for development – tied to irrigation

Sustainability: Over 5 years of conserving soil and water through the NRCS Conservation Tillage and Cover Cropping Program. The farm has been carefully designed for the productive and sustained viability of the soil resource.

HIGHFIELD FARM ASSET SERVICES TEAM

KYLE AMOS
Texas Broker License #578479
806.316.5055
kamos@highfieldfas.com

TIM ANDERSON
Director of Operations
El Campo, Texas
tanderson@highfieldfas.com

CINDY SCHNEIDER
Marketing Coordinator
Houston, Texas
cschneider@highfieldfas.com

LYDIA EUBANK
Accounts Payable/Receivable
Lubbock, Texas
leubank@highfieldfas.com