



**15th Sunday after Pentecost**

**9:30 a.m. | September 21, 2025**

**St. Andrew Presbyterian Church, Iowa City**

# Today's Worship Participants

The Rev. Dr. Carl Anderson, transitional pastor  
Patti Benson, worship leader  
Logos Choir | Austen Wilson, director  
Woodwind Ensemble | Abby Chen, director  
Thomas Hartley, time for young disciples



## After Worship Today

- **PreK-5th Grade:** *Children's Gathering Area*
- **Middle School:** *Middle School Classroom (#17)*
- **High School (adults welcome):** *Faith Beyond Youth Group*, led by Matt Moore | *Hospitality/Bridal Room (#103)*
- **Learning Academy (high schoolers welcome):** *"Finding Hope in the Cancer Journey"* with Sharon Fogleman & Paula McCue | *The Hub*
- **Small Group Starter Class:** For anyone interested in joining (or starting) a small group, with Ted & Annie Potter | *Conference Room (#128)*



**Johnson County  
Interfaith Coalition**

## Bulletin Cover

- "The Parable of the Shrewd Manager" or "The Parable of the Unjust Steward," by Marinus van Reymerswaele (1490-1546), oil on oak panel, displayed in the National Museum in Warsaw, Poland. Source: Wikicommons.



## Questions for Reflection

- When people see us doing business as church, do we look any different from the world's constant calculating—or do we simply mirror it back?
- If you had to choose, what do you most need God to do this week: turn you, return you, restore you, or re-orient you?
- Jesus praises the cleverness of a shrewd manager (or unjust steward)—why do you think he does that, and what might it teach us about how we use money, power, and pride today?



## ST. ANDREW PRESBYTERIAN CHURCH



140 Gathering Place Lane, Iowa City, Iowa, 52246

319-338-7523 |

[www.saintandrew.ccbchurch.com](http://www.saintandrew.ccbchurch.com) | [bit.ly/SAPCYouTube](http://bit.ly/SAPCYouTube)





# The 25th Sunday In Ordinary Time

9:30 a.m. | September 21, 2025

St. Andrew Presbyterian Church | Iowa City, Iowa

## Thought for Reflection

“We are defined by investments of interest, time, and money  
since that to which we assign value assigns value to us.”

— Klyne R. Snodgrass

## Welcome + Announcements

**Team Guatemala** | Impacto Visit (Oct. 2-5)

**Prelude** | *More Love to Thee, O Christ*, arr. by Abby Chen

✠ **Call to Gather** | *adapted from a liturgy by Teri McDowell Ott*

Turn us, O God,

**away from the world's temptations and distractions.**

Return us, O God,

**to the quiet calm of your presence.**

Restore us, O God,

**to the path you call us to follow.**

Orient us, O God,

**to the hope of all that is possible through you.**

✠ **Gathering Hymn** | “Rise Up, O Saints of God!”, pg. 7

✠ **Prayer of Confession & Promise of Ever-Present Grace** | *adapted from a liturgy by Teri McDowell Ott*

Let us honestly acknowledge how we have gone astray and confess our sins to God.

---

**Hymns + Songs** | Pages are listed for the printed bulletin

Numbers (#) are listed for music in the *Lift Up Your Hearts* (red) hymnal

**Bold Print** | Speak or sing together in unison.

✠ | Please rise in body or in spirit.

God, our refuge, you lift up the lowly and hold out hope to the hopeless.  
Yet we who receive your grace so freely do not follow your example.  
We are quick to judge, eager to criticize, slow to show mercy.  
We gather and keep for ourselves what was meant to be shared.  
We diminish and dehumanize those around us.  
God of us all, hear this confession.  
Receive it.  
We ask for your forgiveness.

### *Time for Silent Confession*

Spirit of the Living God, fall afresh on us.  
**Open us to your life-giving Word.**  
Quiet the voices within us that do not align with your will.  
**Focus our minds on the message you intend for us, so we may faithfully discern your way.**

### ✠ **Musical Response** | “Glory to God, Whose Goodness Shines on Me”

**1 Glory to God, whose goodness shines on me,  
and to the Son, whose grace has pardoned me,  
and to the Spirit, whose love has set me free.  
As it was in the beginning, is now and ever shall be. Amen.**

**2 World without end, without end. Amen.  
World without end, without end. Amen.  
World without end, without end. Amen.  
As it was in the beginning, is now and ever shall be. Amen.**

### ✠ **Sharing of Christ’s Peace & Compassion**

And now, as a visible sign of what it means to live together  
in the care and context of Christ’s community,  
let us extend Christ’s peace and compassion to those around us!

The peace of Christ be with you all! **And also with you!**

### **Old Testament Reading** | Jeremiah 8:18-9:1 (*The Voice*)

The word of the prophets for the people of God. **Thanks be to God.**



## Time for Young Disciples †

### Gospel Reading | Luke 16:1-13 (*The Voice*)

The word of the prophets for the people of God. **Thanks be to God.**

### The Message

✕ Hymn | “We Give Thee But Thine Own,” pg. 8

Offertory | *Take My Life, That I May Be*, arr. by Mark Sedio

### ✕ Response to Our Offerings



Give Online

Russell Schulz-Widmar

Lim Swee Hong

### All Together in God's Presence



---

† Children in Kindergarten and younger are invited to move down to the Lower Level Children's Area following the Time for Young Disciples.

## Prayers of the People

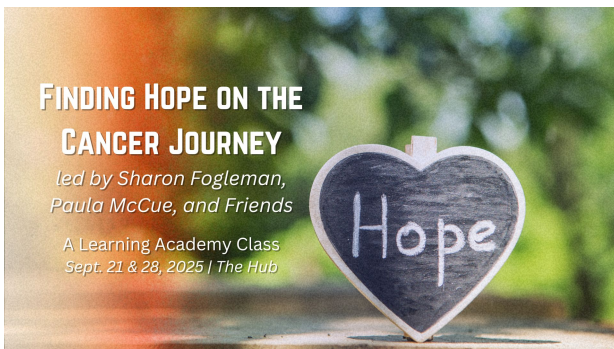
### Lord's Prayer | *adapted from Matthew 6:9-14 (The Voice)*

Abba, our father in heaven,  
let your name remain holy.  
Bring about your kingdom.  
Manifest your will here on earth,  
as it is manifest in heaven.  
Give us each day that day's bread—no more, no less—  
and forgive us our debts  
as we forgive those who owe us something.  
Lead us not into temptation,  
but deliver us from evil.  
But let Your kingdom be,  
and let it be powerful and glorious forever. Amen.

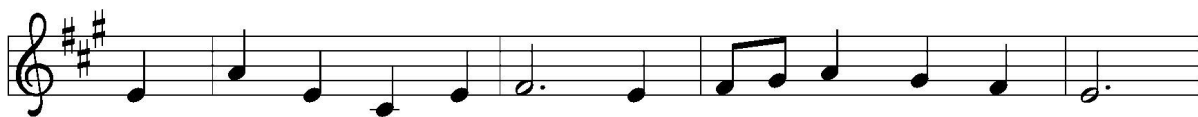
✠ **Sending Hymn** | “Jesu, Jesu,” pg. 9 (*hymnal*, #299)

✠ **Benediction**

**Postlude** | *Prelude in B-flat Major*, by J. S. Bach; arr. by R. Moehlmann



# Rise Up, O Saints of God!



- 1 Rise up, O saints of God! From vain am - bi - tions turn;  
2 Speak out, O saints of God! De - spair en - gulf's earth's frame;  
3 Rise up, O saints of God! The king - dom's task em - brace;  
4 Give heed, O saints of God! Cre - a - tion cries in pain;  
5 Com - mit your hearts to seek the paths which Christ has trod;



Christ rose tri - um - phant that your hearts with no - bler zeal might burn.  
as heirs of God's bap - tis - mal grace, the word of hope pro - claim.  
re - dress sin's cru - el con - se - quence; give jus - tice larg - er place.  
stretch forth your hand of heal - ing now, with love the weak sus - tain.  
and, quick - ened by the Spir - it's pow'r, rise up, O saints of God!

Text: Norman O. Forness, b. 1936

Music: FESTAL SONG, William H. Walter, 1825-1893

Text © Norman O. Forness, admin. Augsburg Fortress

**Want to Learn More about  
the St. Andrew Community?**

**Sign Up for a Next Steps Class**

**11:45 a.m. After Worship**

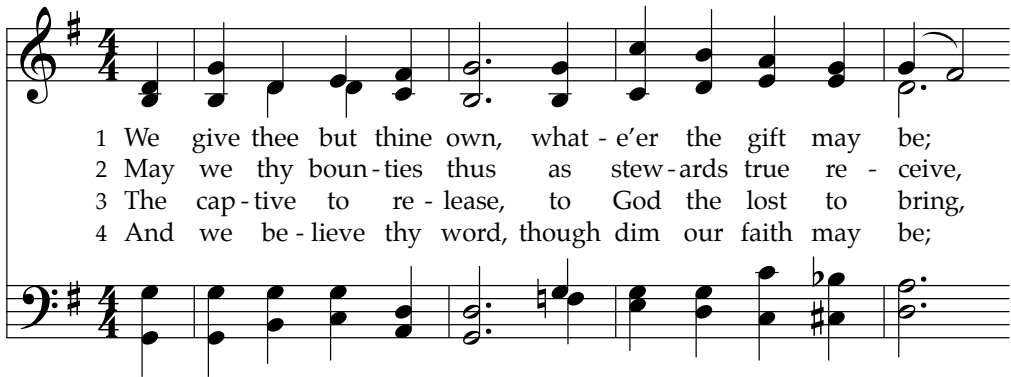
**Sept. 21 | Nov. 16 | Jan. 18**

**[office@saintandrew-ic.org](mailto:office@saintandrew-ic.org)**

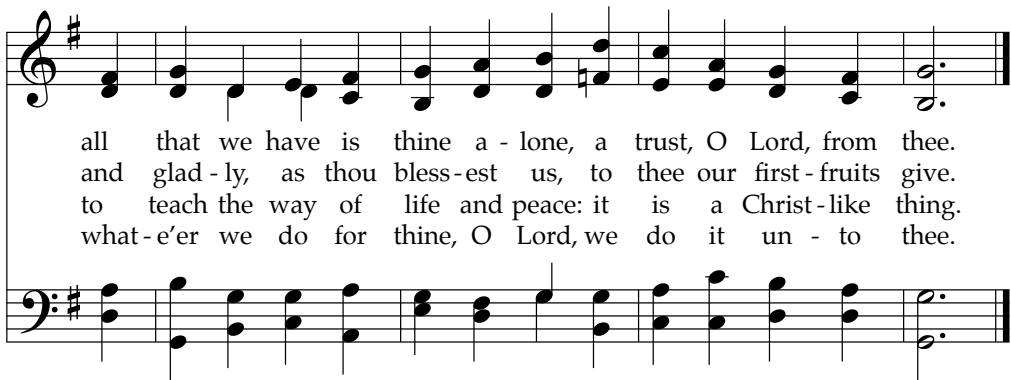




# We Give Thee but Thine Own 708



1 We give thee but thine own, what - e'er the gift may be;  
 2 May we thy boun-ties thus as stew-ards true re - ceive,  
 3 The cap-tive to re - lease, to God the lost to bring,  
 4 And we be - lieve thy word, though dim our faith may be;



all that we have is thine a - lone, a trust, O Lord, from thee.  
 and glad - ly, as thou bless - est us, to thee our first - fruits give.  
 to teach the way of life and peace: it is a Christ - like thing.  
 what - e'er we do for thine, O Lord, we do it un - to thee.

Each successive stanza here expands the implications of the familiar affirmation of the first one. Much more than a concern with money, stewardship shapes our relationship with God and with other people. Despite this tune's name, no source has been found in Schumann's works.

TEXT: William Walsham How, c. 1858

MUSIC: Mason and Webb's *Cantica Laudis*, 1850

SCHUMANN  
SM

## Small Group Starter Class

Sept. 14 - Oct. 19 | Conference Room



with Ted & Annie Potter



5 WAYS TO FORM CHARACTER AND  
CULTIVATE LIFELONG DISCIPLESHIP

FAITH  
BEYOND  
YOUTH  
GROUP



Sunday School with Matt & Carl

a class for teens (adults welcome)

## Jesu, Jesu, Fill Us with Your Love

*Refrain*  $E^b$   $B^b7$

Je - su, Je - su, fill us with your love, show

$E^b$   $Fm$   $B^b7$   $E^b$  *Fine*

us how to serve the neigh-bors we have from you.

$E^b$   $Cm7$   $Fm$   $B^b$   $B^b7$

1 Kneels at the feet of his friends, si - lent - ly wash - es their  
 2 Neigh-bors are rich folk and poor, neigh-bors are black, brown, and  
 3 These are the ones we should serve, these are the ones we should  
 4 Lov - ing puts us on our knees, serv - ing as though we are

$E^b$   $Cm$   $Cm7$   $Fm$   $B^b$   $E^b$  *To Refrain*

feet, Mas - ter who acts as a slave to them.  
 white, neigh-bors are near - by and far a - way.  
 love; all these are neigh-bors to us and you.  
 slaves: this is the way we should live with you.

Optional rhythm



or



Words: Tom Colvin, 1963, © 1969 Hope Publishing Company  
 Music (CHEREPONI 7.7.9 refrain 9.12): Ghanian folk song; adapt. Tom Colvin, 1963, © 1969 Hope Publishing Company; arr. Diane Dykgraaf © 2012 Hope Publishing Company





*Celebrating 80 Years of Life  
& 55 Years of Ordained Ministry*  
**A PARTY FOR THE REV. MARK WILSON MARTIN**

**2-4 P.M. | SUNDAY SEPTEMBER 28, 2025**

**@ THE SUMMIT OF CORALVILLE (3 RUSSELL SLADE BOULEVARD)**



# **Pastoral, Ministry, & Administrative Staff and Elected Church Officers**

## **Pastors**

Rev. Dr. Carl Anderson, *transitional pastor* | [pastorcarl@saintandrew-ic.org](mailto:pastorcarl@saintandrew-ic.org)

Rev. Colette Soultz, *pastoral care associate* | [pastoralcare@saintandrew-ic.org](mailto:pastoralcare@saintandrew-ic.org)

Rev. Mark Wilson Martin, *pastor emeritus*

## **Administrative Ministries**

Walter Sparks, *finance administrator* | [finance@saintandrew-ic.org](mailto:finance@saintandrew-ic.org)

Jeff Charis-Carlson, *director of communications & media ministries* | [jcharisc@saintandrew-ic.org](mailto:jcharisc@saintandrew-ic.org)

Amy Schmidt-Rundell, *mission outreach coordinator* | [amysr@saintandrew-ic.org](mailto:amysr@saintandrew-ic.org)

Vacant, *building & grounds coordinator* | [hiring@saintandrew-ic.org](mailto:hiring@saintandrew-ic.org)

## **Children's, Family & Student Ministries**

Matt Moore, *director of student ministries* | [mmoore@saintandrew-ic.org](mailto:mmoore@saintandrew-ic.org)

Thomas Hartley, *director of children's and family ministries* | [thartley@saintandrew-ic.org](mailto:thartley@saintandrew-ic.org)

Nichole Hoffman, *children's ministries outreach coordinator* | [nhoffman@saintandrew-ic.org](mailto:nhoffman@saintandrew-ic.org)

Sara Penn, *children's ministries activities coordinator* | [spenn@saintandrew-ic.org](mailto:spenn@saintandrew-ic.org)

## **Music Ministries**

Austen Wilson, *director of music ministries* | [awilson@saintandrew-ic.org](mailto:awilson@saintandrew-ic.org)

Abby Chen, *organist & accompanist* | [achen@saintandrew-ic.org](mailto:achen@saintandrew-ic.org)

Laura Kastens, *director of handbell ministries* | [lkastens@saintandrew-ic.org](mailto:lkastens@saintandrew-ic.org)

(outgoing) Will Fecko, *director of instrumental ministries* | [wfecko@saintandrew-ic.org](mailto:wfecko@saintandrew-ic.org)

## **Elders**

**2026:** Chloe Goers, Aaron Gibson, Mary Hausler, Virginia Ibrahim-Olin, Josh Schilling, and Gregs Thomopulos

**2027:** Becky Benson, Scott Fisher, Austin Kannegieter, Emily Neddermeyer, and Munir Tanas

**2028:** Helen Bryce, Don Burch, Paula McCue, Judy Swafford, and Jon Swearingen

## **Deacons**

**2026:** Jim Halverson, Scott Hoffman, Emmit Schmidt-Rundell, Jamie Tanas, Mettie Thomopulos and David Weitzel

**2027:** Jordan Barrett, Kathy & Dave Duys, Lynne Ginsberg, Cody Neddermeyer, and Jenni Stacy-Adams

**2028:** Laurel Crusinberry, Vern Dengler, Rick Graf, Cindy Seyfer, and Allison Van Iddekinge

## **Personnel Team (at large)**

**2026:** Twila Finkelstein | **2027:** Kent Short | **2028:** Ernie Found and Mindy Egeland

## **Nominating Team (at large)**

**2026:** Kyle Bernard, Hillary Chappo, Paul Heidger, and Toni Van Voorhis

# Questions about Worship?

- **Welcome!** We are happy to have you join us today. If you would like more information about St. Andrew, please email [office@saintandrew-ic.org](mailto:office@saintandrew-ic.org) or fill out this short form: <https://tinyurl.com/sapc-guest>.
- Our worship services begin **in-person and online shortly before 9:30 a.m. on Sunday mornings**, followed by Sunday School and Adult Christian Education offerings from September to April and a variety of After Worship activities from May to August.
- **Nursery care** (up to age 2) is provided in the Lower Level throughout the morning. Programming for children (through Kindergarten age) begins in the Lower Level after the **Time for Young Disciples**.
- Unless otherwise designated, gifts given to the **weekly offering** support the church budget, including staff salaries, utilities, mission outreach, and all aspects of ministry.
- To log into the **St. Andrew Connect** system, either download the **St. Andrew App** through the **App Store/Google Play** or visit <https://saintandrew.ccbchurch.com>.
- There are wheelchairs available for use as needed in the lower level entrance foyer and by the coat racks near the upper level entrance.
- There is an AED near the Coffee Kitchen should a medical emergency arise.

## Upcoming Events

- **Next Steps Class** | Today
- **Food Market** | Sept. 24
- **At the Table** | Oct. 2
- **Impacto Reunion** | Oct. 3
- **“Sound of Friendship” Concert** | Oct. 3
- **World Communion Sunday** | Oct. 5
- **BASIC Pancake Breakfast** | Oct. 5
- **Pilot Club Breakfast** | Oct. 11
- **Hayrides @ Dane Farm** | Oct. 11
- **Senior Moments** | Oct. 21
- **Trunk or Treat** | Oct. 26
- **Organ Recital: Abby Chen** | Oct. 27
- **Food Market** | Oct. 29
- **Minds Matter Resource Fair** | Nov. 1
- **Homemade from the Heart Sale** | Nov. 1
- **Caregiver Wellness Day** | Nov. 6
- **At the Table** | Nov. 6
- **AGO Organ Recital** | Nov. 8
- **Gifts of the Heart Packing** | Nov. 15
- **‘No Grinch Here’ Food Drive** | Nov. 16 to Dec. 7
- **Next Steps** | Nov. 16
- **Food Market** | Nov. 19