

Third Sunday of Easter



9:30 a.m. | April 23, 2023

St. Andrew Presbyterian Church, Iowa City

Proposed Changes to St. Andrew's Statement of Inclusion

Last fall, St. Andrew's Session appointed an **Inclusion Task Force** to look through the **Statement of Inclusion** adopted back in 2017 and recommend any changes necessary to ensure that St. Andrew serves as an open and welcoming church community. The Task Force members (*Twila Finkelstein, Eric Goers, Virginia Ibrahim-Olin, Aaron Shileny, Gregs Thomopulos, and Jan Waterhouse*) spent several weeks going through the statement currently on the church website (<https://saintandrew-ic.org/who-we-are/statement-of-inclusion>) and deciding on ways to better express the congregation's commitment to being fully inclusive.

Last month, Session decided the latest draft of a new statement was ready to send to the congregation for further conversation. If you have some thoughts about the updated statement below, please send your comments to office@saintandrew-ic.org, and your insights will be forwarded to the task force members. **Members of the task force will be in the Atrium after worship on April 30 to talk with people individually.**

If you would like to invite a task force member to speak to you or your small group about St. Andrew's commitment to full inclusion, please email the Church Office or reach out directly to **Eric Goers** (ericgoers@gmail.com), the Session member who has been overseeing the work of the task force.

Statement of Inclusion (DRAFT 3/19/2023)

Therefore welcome one another as Christ has welcomed you, for the glory of God. — Romans 15:7

The congregation of St. Andrew Presbyterian Church affirms the worth and dignity of all people. We all are created by God in God's image, and God found all of creation to be good. Just as Jesus welcomed everyone into fellowship, especially those marginalized by society, we welcome all people to our congregation regardless of race, ethnicity, age, sexual orientation, gender identity, physical or mental ability, socioeconomic status, marital status, family structure, country of origin, or immigration status. All are welcome to participate fully in the life of St. Andrew: worship, service, baptism, communion, membership, ministry, and leadership. To this end, we affirm that the covenant of marriage should be extended to any two consenting adults who seek to enter a marriage based upon love, responsibility, mutual respect, and trust in God's grace.

We acknowledge that the Christian church has historically condemned and excluded LGBTQ+ persons from the community of faith, and we assert that such actions are incompatible with the gospel of Jesus. We also acknowledge, and deeply regret, that St. Andrew Presbyterian's actions have at times caused harm to our relationships with members of the LGBTQ+ community, including members of our own congregation. As we continue to grow as a congregation and discern our path forward in God's love and grace, we seek to rectify these past wrongs and pursue justice for those who have been and continue to be oppressed. We commit to continue to learn and work toward ensuring that St. Andrew is a safe place where all people are welcomed and loved.

Hymns + Songs | Pages are listed for the printed bulletin

Numbers (#) are listed for music in the *Lift Up Your Hearts* (red) hymnal

Bold Print | Speak or sing together in unison.

✧ Please rise in body or in spirit.

Third Sunday of Easter

9:30 a.m. | April 23, 2023

St. Andrew Presbyterian Church | Iowa City, Iowa

Thought for Reflection

"In loving others, and caring for them, you are on a journey. Where is journey's end if not the Lord our God, the One we should love with all our heart, with all our soul, with all our mind? We have not yet reached him, but our neighbor is here at our side. Look after this companion of your pilgrimage if you would reach the One whom you desire to be with forever."

— Saint Augustine

Welcome + Announcements

Inclusion Task Force

Prelude | *Excerpt from Fantasy on Ubi Caritas*, arr. by Brenda Portman

✠ **Call to Gather** | *adapted from a liturgy by Carol Holbrook Prickett*

We have been walking, Lord,
on roads of uncertainty and fear,
on roads of exhaustion and doubt,
on winding roads that have led us here.

Join us on our journey, Lord.

By your presence, refresh our spirits,
set our hearts ablaze,
and give us new direction!

✠ **Gathering Hymn** | "Christ Has Arisen, Alleluia," pg. 7 (hymnal, #188)
v. 1, Logos Choir | vs. 2-5, Congregation

✠ **Prayer of Confession and Promise of Ever-Present Grace** | *adapted from a liturgy by Carol Holbrook Prickett*

When we say, "we don't sin," we deny who we are.
But when we say, "there's no way out," we deny who God is.
Trusting that God's grace is more powerful than our sin, let us confess our sins:

Jesus, Teacher, we confess today our outright foolishness.

We have been foolish to doubt your promises.

Foolish to withhold love from neighbor.

Foolish to chase riches, prestige and power.

Foolish to waste your gifts and spoil your creation.

Foolish to divide your children from each other.

Foolish to think hope is lost.

Wise us up again.

Open our hearts to your presence
in our lives, in our neighbors, in our world.

**In your grace, help us grab onto
our millionth second chance,
and forge a new road from here on. Amen**

Time for silent confession

Hear the good news! New life is not only possible;
it has drawn near to us in Jesus.
The promise is for us, and for all the children of God.

**By the grace of God,
the glory of Christ,
and the gift of the Holy Spirit,
we are forgiven and we are free!**

Alleluia! Amen.

⌘ **Musical Response** | “Christ Is Risen! Shout Hosanna,” v. 2 (*hymnal*, #204)

***Christ is risen! Raise your spirits
from the caverns of despair.
Walk with gladness in the morning.
See what love can do and dare.
Drink the wine of resurrection,
not a servant, but a friend.
Jesus is our strong companion.
Joy and peace shall never end.***

⌘ **Sharing of Christ’s Peace & Compassion**

And now, as a visible sign
of what it means to live together
in the care and context
of Christ’s community,
let us extend Christ’s
peace and compassion
to those around us!

The peace of Christ be with you all!
And also with you!

Epistle Reading | 1 Peter 1:3-5, 22-23 (*Bible*, pg. 893)

The Word of God for the people of God. **Thanks be to God.**

Time for Young Disciples | Thomas Hartley, director of children's and family ministries †

Gospel Reading | Luke 24:13-35 (*Bible*, pg. 860)

The Word of God for the people of God. **Thanks be to God.**

The Message | *The Companion on the Way* | Rev. Kyle Otterbein

✠ **Hymn** | "We Know that Christ Is Raised," pg. 8 (*hymnal*, #795)

Celebration of Baptism

*Emma Jo Bernard, daughter of Kyle & Allison Bernard
Levi Law Tuttle, son of Michael Tuttle & Erika Law Tuttle*

"The Apostles' Creed" (*hymnal*, #783)

**I believe in God, the Father almighty,
creator of heaven and earth.
I believe in Jesus Christ,
his only Son, our Lord,
who was conceived by the Holy Spirit
and born of the virgin Mary.
He suffered under Pontius Pilate,
was crucified, died, and was buried;
he descended to hell.
The third day he rose again from the dead.
He ascended to heaven
and is seated at the right hand of God
the Father almighty.
From there he will come to judge
the living and the dead.
I believe in the Holy Spirit,
the holy catholic church,
the communion of saints,
the forgiveness of sins,
the resurrection of the body,
and the life everlasting. Amen.**

† Following the *Time for Young Disciples*, Kindergartners and younger children are welcome to join activities in the Lower Level Children's Area.

Worship in Tithes and Offerings

Offertory | *Christus Paradox*, arr. by Alfred V. Fedak

✠ **Response to Our Offerings** | “Praise God from Whom All Blessings Flow”

Praise God, from whom all blessings flow.

Praise God, all creatures high and low.

Alleluia, alleluia!

Praise God, in Jesus fully known:

Creator, Word, and Spirit one.

Alleluia, alleluia!

Alleluia, alleluia, alleluia!

Prayers of the People & The Lord’s Prayer

Our Father who art in heaven,
hallowed be thy name.
Thy kingdom come, thy will be done,
on earth as it is in heaven.
Give us this day our daily bread;
and forgive us our debts,
as we forgive our debtors;
and lead us not into temptation,
but deliver us from evil.
For thine is the kingdom
and the power and the glory, forever. Amen.

✠ **Sending Hymn** | “Just a Closer Walk with Thee,” (*hymnal*, #661)

✠ **Benediction**

Postlude | *Fantasy on Just a Closer Walk with Thee*, arr. by Abby Chen

Today’s Worship Participants

Rev. Kyle Otterbein, *pastor*

Becky Benson, *worship leader*

Logos Choir | *Abby Chen*, organist & accompanist

John Mendelin & Ethan Elsbernd, *music interns*

The Flowers on the Chancel are given by Kathy Duys in celebration of birthdays of family and friends, may you be blessed with a wonderful day: Amanda Duys Cox & Kathleen Kennedy Cox (April 17), Robbie Duys (April 21), Hector Cox Klaus & Julia Druckmiller (April 23), and Kathy Duys (April 24).

188 Mfurahini, haleluya/Christ Has Arisen, Alleluia

F/C F C7 Dm Gm F

Swahili 1 M - fu - ra - hi - ni, ha - le - lu - ya, m - ko - mbo - zi a -
 English 1 Christ has a - ris - en, al - le - lu - ia! Re-joice and praise him,
 2 For three long days the grave did its worst un - til its strength by
 3 The an - gel said to them, "Do not fear. You look for Je - sus,

C F F/C F C7 Dm

me - fu - fu - ka. A - me - fu - fu - ka, ha - le - lu - ya,
 al - le - lu - ia! For our Re - deem - er burst from the tomb,
 God was dis - persed. He who gives life did death un - der - go,
 who is not here. See for your - selves the tomb is all bare—

Gm F C F Refrain C

m - si - fu - ni sa - sa yu ha - i. Tu - mwi - mbi - e so - te
 e - ven from death, dis - pel - ling its gloom.
 and in its con - quest his might did show. Let us sing praise to him
 on - ly the grave-clothes are ly - ing there."

C7 F C C7 F

kwa fu - ra - ha. Ye - su a - me - to - ka ka - bu - ri - ni.
 with end - less joy; death's fear - ful sting he has come to de - stroy.

Words: Bernard Kyamanywa (b. 1938) © 1968 Lutheran Theological College, Makumira, Tanzania, admin.
 Augsburg Fortress; tr. Howard S. Olson (1922-2010) © 1977 Howard S. Olson, admin. Augsburg Fortress
 Music (MFURAHINI, HALELUYA 9.9.9 refrain 10.10.9.9): Tanzanian traditional, P.D.

We Know that Christ Is Raised

Unison G D/G D7 C G/B

1 We know that Christ is raised and dies no more.
 2 We share by wa - ter in his sav - ing death.
 3 The Fa - ther's splen - dor clothes the Son with life.
 4 A new cre - a - tion comes to life and grows

D7 G D A D Dm G7

Em-braced by death, he broke its fear - ful hold, and our de -
 Re - born, we share with him an Eas - ter life as liv - ing
 The Spir - it's pow - er shakes the church of God. Bap-tized, we
 as Christ's new bod - y takes on flesh and blood. The un - i -

C2 Am Em Cmaj7 Am G Dsus D

spair he turned to blaz - ing joy. Al - le - lu - ia!
 mem - bers of a liv - ing Christ. Al - le - lu - ia!
 live with God, the Three in One. Al - le - lu - ia!
 verse, re - stored and whole, will sing: Al - le - lu - ia!

Em Bsus B Em C G C/G G

Accompaniment for final stanza

Words: John B. Geyer, 1967, alt., © 1969 John B. Geyer
 Music (ENGELBERG 10.10.10 with alleluia): Charles Villiers Stanford (1852-1924), P.D.

Just a Closer Walk with Thee

B \flat Cm7 F F7 B \flat

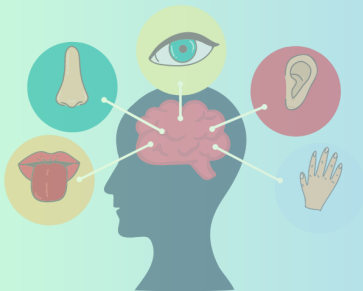
1 I am weak but thou art strong: Je - sus, keep me from all wrong;
 2 Through this world of toil and snares, if I fal - ter, Lord, who cares?
 3 When my fee - ble life is o'er, time for me will be no more;
Refrain Just a clos - er walk with thee, grant it, Je - sus, is my plea;

B \flat 7 E \flat C \sharp °7 B \flat /F F7 To Refrain B \flat

I'll be sat - is - fied as long as I walk, let me walk close to thee.
 Who with me my bur - den shares? None but thee, dear _ Lord, none but thee.
 guide me gent - ly, safe - ly o'er to thy king - dom _ shore, to thy shore.
 dail - y walk - ing close to thee, let it be, dear _ Lord, let it be.

Words and Music (CLOSER WALK): Anonymous, P.D.

ST. ANDREW PRESBYTERIAN SENSORY FAIR



After Worship May 7, 2023

Help us kick off this year's Mission Focus on Mental Health!
Activities for All Ages & Abilities.

For information, contact Amy Schmidt-Rundell or Nichole Hoffman

Questions about Worship @ St. Andrew?

- **Welcome!** We are happy to have you join us today. If you would like more information about St. Andrew, please email office@saintandrew-ic.org or visit <https://bit.ly/sapc-connection>.
- Our worship services begin **in-person and online at 9:30 a.m. on Sunday mornings**, followed by Sunday School and Adult Christian Education offerings. *We usually begin with Welcome & Announcements a few minutes before 9:30 a.m.*
- All ages are welcome in our worship services. Worship materials for all ages are available in **The Maker's Toolbox** outside the north entrance to the Sanctuary.
- **Nursery care** (up to age 2) is provided in the Lower Level throughout the morning. Programming for children (through Kindergarten age) begins in the Lower Level after the **Time for Young Disciples** on most Sundays and after the **Sharing of Christ's Peace and Compassion** on Communion Sundays.
- Large print hymnals, bibles, and bulletins also are available outside the Sanctuary doors.
- A T-Coil hearing assist loop is also available for those with this feature on their hearing aids.
- **Prayer Requests** may be written on a blue **Prayer Request Card** and placed in the offering plates as they are passed or offered online at <https://bit.ly/sapc-connection>.
- Unless otherwise designated, gifts given to the weekly **offering**—either in the offering plates or through our website—support the annual church budget, including staff salaries, utilities, mission outreach, and all aspects of ministry at St. Andrew.
- You can find a copy of this bulletin on our church website and app: <https://bit.ly/sapc-bulletins>.

ETC MISSION TRIP FUNDRAISER

Trivia Night

SATURDAY MAY 6 | 140 GATHERING PL LANE
IOWA CITY, IA 52246

DOORS OPEN @ 6:45 P.M.
TRIVIA STARTS @ 7 P.M.

MORE INFO:
mmoore@saintandrew-ic.org

The graphic features a dark background with a brick wall texture. A glowing blue speech bubble contains the text 'Trivia Night' in a stylized font. To the right, a rounded rectangle contains the date and location. Below this, the event times are listed, and at the bottom, contact information is provided.

Pastoral, Ministry, and Administrative Staff

Pastors

Rev. W. Robert Martin III, *lead pastor & head of staff* | rmartin@saintandrew-ic.org

Rev. Kyle Otterbein, *associate pastor* | kotterbein@saintandrew-ic.org

Rev. Mark Wilson Martin, *pastor emeritus* | pastormwm@gmail.com

Office, Finance, Communications & Media Ministries

John Benson, *finance administrator* | finance@saintandrew-ic.org

Jeff Charis-Carlson, *director of communications and media ministries* | jcharisc@saintandrew-ic.org

Jaymeson Harms, *building & grounds coordinator* | jharms@saintandrew-ic.org

Amy Schmidt-Rundell, *mission outreach coordinator* | amysr@saintandrew-ic.org

Children's, Family & Student Ministries

Matt Moore, *director of student ministries* | mmoore@saintandrew-ic.org

Thomas Hartley, *director of children's and family ministries* | thartley@saintandrew-ic.org

Nichole Hoffman, *children's ministries outreach coordinator* | nhoffman@saintandrew-ic.org

Sara Penn, *children's ministries activities coordinator* | spenn@saintandrew-ic.org

Music Ministries

Austen Wilson, *director of music ministries* | awilson@saintandrew-ic.org

Laura Kastens, *assistant director of handbell ministries* | lkastens@saintandrew-ic.org

Lee Rabe, *assistant director of instrumental ministries* | lrabe@saintandrew-ic.org

Abby Chen, *organist & accompanist* | achen@saintandrew-ic.org

Ethan Elsbernd & John Mendelin, *music interns*

Upcoming in Worship @ St. Andrew

April 30, 2023 | 9:30 a.m.

- **Prompting:** Pastor Rob Martin
- **Music:** A Child-Led Service
- *Sunday School & Adult Ed*

May 7, 2023 | 9:30 a.m.

- **Prompting:** Matt Moore
- **After Worship:** Sensory Fair

May 14, 2023 | 9:30 a.m.

- **Sermon:** Pastor Kyle Otterbein

May 21, 2023 | 9:30 a.m.

- **Prompting:** Pastor Rob Martin
- **After Worship:** Pancake Fundraiser & Coffee with Leaders



Bulletin Cover: *Kitchen Maid with the Supper at Emmaus*, by Diego Velázquez (1599-1660): Regarded as the greatest Spanish artist of his time, Velázquez began his career in his native Seville and later became the leading artist at the court of King Philip IV in Madrid. This painting is widely considered to be Velázquez's earliest known work. The artist painted Christ appearing to his disciples at Emmaus in the left background. In the foreground, he depicted a servant working in the kitchen. The inversion of the religious and the worldly subjects was inspired by Flemish painters.

Sunday School & Adult Education

- **PreK-6th:** Meet in the Children's Area (*Earth Day Clean Up Activities*)
- **Junior & Senior High:** Meet in the Hub (*Earth Day Clean Up Activities*)
- **"Trouble the Water: Conversations to Disrupt Racism & Dominance,"** with Pastor Kyle Otterbein, Room 128



TROUBLE THE WATER
Conversations to Disrupt
Racism & Dominance
Adult Ed | Room 128



ST. ANDREW PRESBYTERIAN CHURCH
Changing Hearts | Renewing Lives
www.saintandrew-ic.org | 319-338-7523

