




Roundabout Land Sale Information

Jeff Broman

Facilities Manager

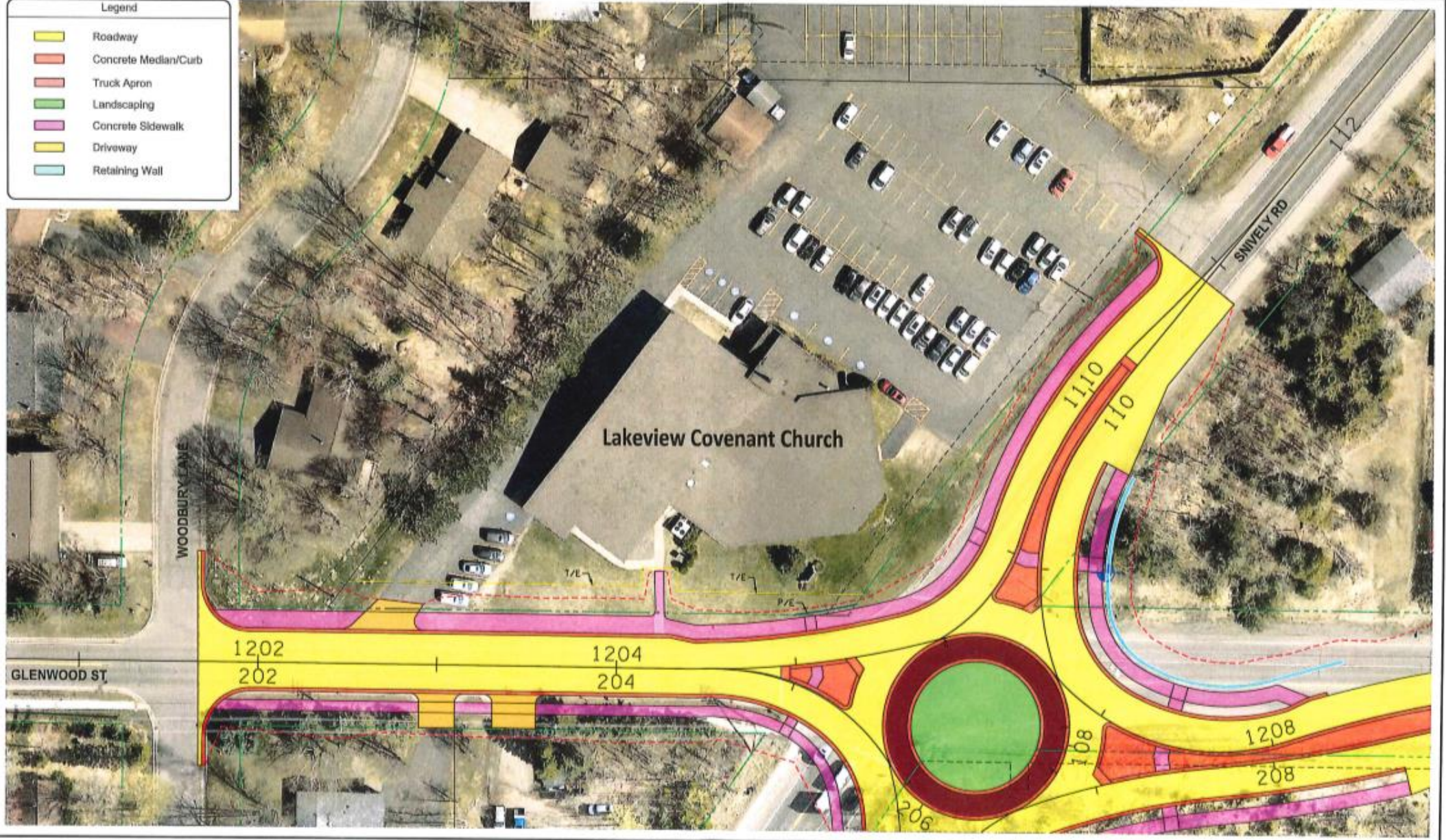


Leadership Team Recommendation:

- ▶ The leadership team recommends that Lakeview sell approximately 180 square feet of land to St. Louis County for the construction of a roundabout at the intersection of Glenwood and Jean Duluth Road.
- 

Legend

- Roadway
- Concrete Median/Curb
- Truck Apron
- Landscaping
- Concrete Sidewalk
- Driveway
- Retaining Wall



Lakeview Covenant Church Property
Duluth, Minnesota





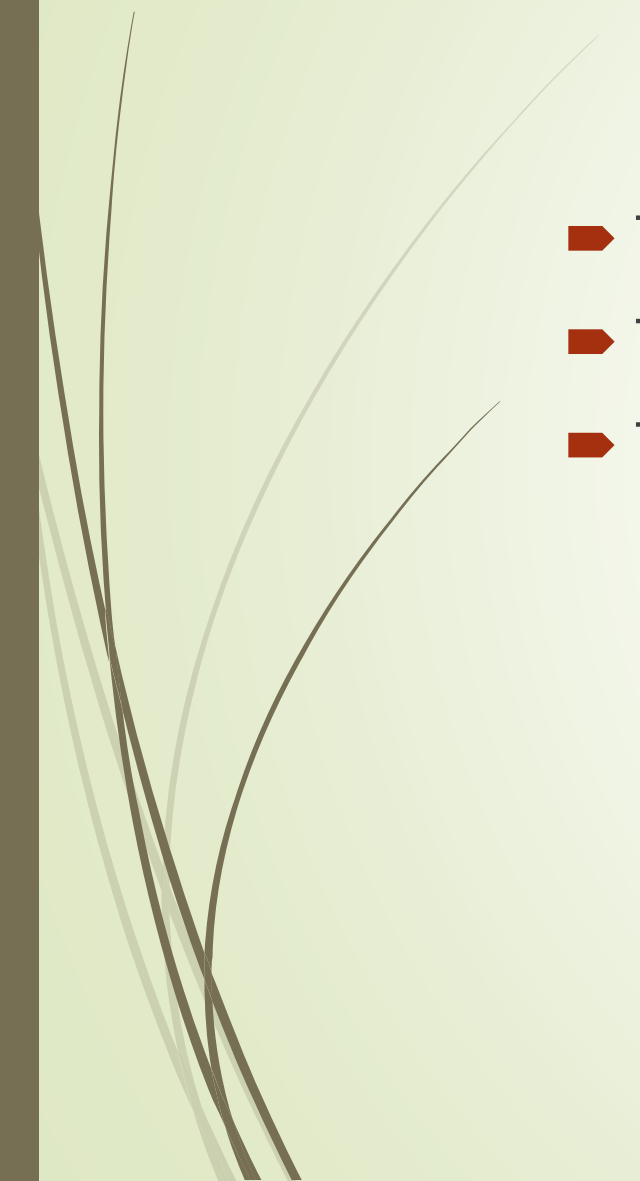
Glenwood St & Snively Rd Intersection
Duluth, Minnesota

1001 Jean Duluth Road Parcel Impacts

July 13, 2020



Why a Roundabout?

- ▶ To improve basic traffic flow at all times.
 - ▶ To reduce traffic delays at peak times.
 - ▶ To improve safety for motorists, pedestrians, and bikers.
- 



What will Lakeview receive from the project?

- \$3100 in cash to cover the cost of the land and provide some compensation for disruption during construction
- New and better storm water/runoff control
- Curb and gutter along Glenwood & Jean Duluth
- New sidewalk from entrance to entrance.
- The opportunity to be a good neighbor.



What happens next?

- Approval of the sale by the congregation at the annual meeting.
 - Execution of necessary documents by the leadership team.
 - Construction won't start until Summer 2022.
- 