

being *Godly* women  
in an ungodly world

## SCHEDULE OF EVENTS

### Friday

3:00 P.M.-Check-in available

7:00 - 9:00-Session 1-

*Being a Godly Woman  
in an Ungodly World*

9:00 - Dismissal

### Saturday

6:00 - 8:30 A.M.-Continental Breakfast at the Doubletree Hotel

8:30 - 10:00-Session 2-

*Being a Godly Woman  
in an Ungodly World*

10:00 - 11:00-Brunch

11:00 A.M.-12:30 PM-Session 3-

*Being a Godly Woman  
in an Ungodly World*

### Cost:

Single Room: \$80

Single Bed (2/room): \$50

Share Bed (4/room): \$30

Just for the day (retreat and brunch, no hotel or breakfast): \$20

*Checks need to be made payable to First Baptist Church and turned in to the church office or any Women's Ministry Team member by March 15.*

## 14<sup>th</sup> Annual Women's Retreat

### First Baptist Church of Fayetteville

7:00 pm Friday, March 27-12:30 pm Saturday, March 28



Guest Speaker: Judy Bratten

at the  
Doubletree Hotel  
301 SE Walton Blvd.  
Bentonville, AR 72712

Surround yourself with God's love as Judy reveals how His Word, insights and wisdom can lead you to become the Christ-centered woman you've always dreamed of being.



### Take the dare!

Sign-up for a special viewing of the movie **FIREPROOF** (bring friends) and the **LOVE DARE** challenge at the Information Center or online at <http://www.fbcfayetteville.org/signup.html> now!

**Free showing of the movie FIREPROOF**  
March 6 at 7:00 pm.

**LOVE DARE study meets on Sundays at 5:00 pm**  
March 8-May 10  
Student book cost is \$7;  
Devotional book cost is \$10.



**NEEDED: Sponsors** for youth from the Boys' Ranch in Harrison to attend the Young Christian's Weekend in Branson March 27-28.

It will take \$50 for each boy. Please designate your donations to *Boy's Ranch Project*.

### WOMEN OF FAITH

March 13-14 in Kansas City, MO.

Need info on travel/roommate arrangements? Are you already registered and are just looking for others who plan to attend? Contact Jennifer at 443-7104. Information on pricing and agenda is at [www.womenoffaith.com](http://www.womenoffaith.com).



for  
Special Singles Sunday School Teachers  
Marti Kaufman  
&  
Evelyn McDonald  
**Sunday, March 22**  
following Morning Worship  
Mitchell Hall  
*Everyone is invited!*

# Parent's Night Out

Friday, March 6 ~ 6:30 - 9:30 p.m.

## Babies - 5<sup>th</sup> Grade

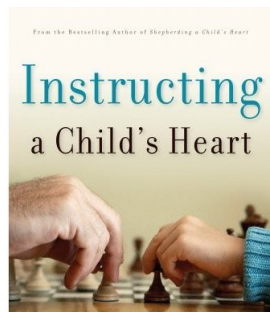
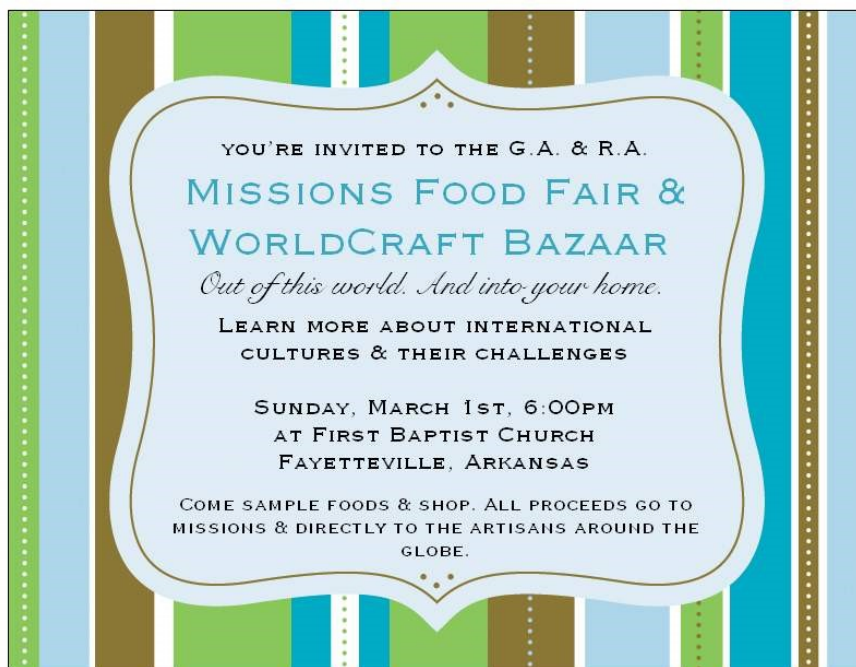
Cost: \$6 per child/Family Max: \$20.00

If you are going to see the movie **FIREPROOF** at the church, you do not have to pay the childcare fee. If you are going somewhere other than the movie, fees will apply. Sign-up will be required for both.



Reservations will be taken on Sundays and Wednesdays only. Payment must be made when the reservation is taken.

**Reservations must be made by Sunday, March 1.**



Youth Teacher/Leader Mtg.  
**Sunday March 1 @ 4pm**  
in the Youth Room

*Please bring your Bible, the Book, Question Sheet, and a pen. We are excited to see how God has moved in your heart and the way that it will overflow into our students and their families.*

### Start Praying & Packing

## Mission Arlington

**March 15-20 — \$160**

Packets available at Youth Desk! Also check out [MissionArlington.org](http://MissionArlington.org) for Rainbow Group info  
**Mission Arlington Parent Mtg.**  
March 8 at 4pm

### FUGE

Bible Study, Growth & Fun! There is a possibility of available spots. Hurry & contact the Youth Office soon if you are interested!  
**June 8-13 — \$60 deposit.**  
Packets at Youth desk.

# March 2009

## Regularly Scheduled Events

Sunday	Monday	Tuesday	Wednesday	Thursday	Friday	Saturday
1 FOOD PANTRY DAY 4:00 PM-Childhood Ed. C., P 4:30-Managing Your Finances, 320 5:00-When God's People Pray, 350 6:00 PM-Missions Food Fair, MH	2 12:00 Noon-FHS Underground	3	4 5:30 PM-Adult Sunday School Director mtg., CR	5 9:30 AM-Women's Bible Study, P 7:00 PM-Women on Mission	6 Parents' night out 7:00 PM-Fireproof movie night	7
Week of Prayer for North American Missions						
8 <i>Week of Prayer ends</i> 4:00-Stewardship C., CR 4:30-Managing Your Finances, 320 <i>Last</i> 5:00-History C., HR; Love Dare Study, 324	9	10	11 5:30 PM-Public Rela- tions C., CR	12 9:30 AM-Women's Bible Study, P 2:00 PM-LOA Class Mtg., P 6:45-Deacon's Mtg., 150	13	14
15 4:00 PM-Women's C., 174; Floral C., CR; Wel- come C., P; Play Learn C., CR 5:00-Love Dare Study, 324; <i>No Youth Choir</i> 7:00-General Business Mtg.	16	17	18 5:30 PM-Evangelism C., CR	19	20	21
Spring Break March 17-21						
Youth Mission Arlington						
College Mission Trip						
22 12:00 Noon-Reception for teachers of Special Sin- gles, MH 5:00-Love Dare Study, 324	23	24	25	26 9:30 AM-Women's Bible Study, P 11:30-Adult Lunch & Game Day, MH	27 7:30 AM-Young Chris- tian's Weekend, Silver Dollar City	28
College Mission Trip						
29 1:00-4:00 PM-Write the Bible Party, MH 5:00-Love Dare Study, 324 6:00-Deacon Ordination & Reception	30	31			7 PM Women's Retreat	12:30 PM

### Sunday:

9:00am Library Opens  
9:30 Sunday School  
10:50 Morning Worship  
5:00 Youth Choir  
Middle School Bible Study  
Team Kid

6:00 ENGAGE

### Monday:

7:00am Men's Prayer Meeting, CR  
6:15pm FIRST Touch, P

### Tuesday:

9:30am Campus Ministers, NB  
12:30pm Celebrate Recovery, NB  
6:55 BSF

### Wednesday

9:30am Quilting Group, #322  
12:15pm *Bell Canto*, Adult Bells

4:00 *Campanella*, MS Bells

5:00 Family Meal, MH  
*Resound*, Youth Bells

5:45 Graded Choirs

Middle School Choir

Acteens

6:00 Bible Study/Prayer Meeting

Sunday School Overview, 173

College Bible Studies, NB

Chinese/English Bible Study

Youth Prayer Groups

Sanctuary Choir

Middle School Bible Study

Missions Orgs.

7:00 Youth Worship & Bible Study

7:40 Choir Childcare

8:00 ENGAGE Musicians' Rehearsal

### Thursday:

6:30pm Adult Basketball, MH

### LEGEND

C - Committee  
ChR - Choir Rm  
CR - Conf. Rm  
HR - Heritage Rm  
K - Kitchen  
LA - Lower Aud.  
MH - Mitchell Hall  
NB - 325 N College  
P - Parlor  
S - Sanctuary



## Praise Record - Feb. 22

Sunday School Enrollment .....	1041
Sunday School Attendance .....	582
New Sunday School Members .....	0
Morning Worship .....	615
Evening Worship .....	217
Decision.....	1
Other Weekly Bible Studies .....	20
<i>Metro Church</i> .....	54
Received for week .....	\$20,538.34
Required for week .....	\$35,101.52
Received in month to date .....	\$144,447.45
Required in month to date .....	\$140,406.08
Received in 2009 .....	\$267,856.12
Required in 2009 to date.....	\$296,287.07
<b>CBCG</b> Received this week .....	\$470.00
CBCG Received to-date .....	\$2,264,960.90

### ETC ~ MARCH 1, 2009

*Babies* 1-James & Carole Butter  
*Babies* 2-Ellen Tidwell, Shannon Peters  
*Toddlers*-Aaron & Allison McBride  
*Twos* 1-Charles & Shelly Martin  
*Twos* 2-Clay & Brianne Fowlkes  
*Threes*-Don & Kim Horton  
*Fours*-Cliff & Laura Grisham

### HOSPITALIZED:

Millie Bryan, WRMC #5217  
 Jamie Jones, HealthSouth #111  
 Lorraine Moore, WRMC ICU  
 Bob Nash, HealthSouth #124

### DEACON OF THE WEEK MARCH 1-7

Gerald Jones ☎ 442-4178

### VAN DRIVERS~SUN., MARCH 1

Andrew Aldridge (444-8300)  
 Dwayne Calhoun + night (330-0142)

### FAMILY MEAL Wed., March 4 @ 5PM

**MENU:** Chimichangas, Mexican Rice,  
 Refried Beans, Potato/Salad Bar,  
 Dessert

### CHILDREN'S MENU (PS-Grade 5 only):

Corn Dogs

### KITCHEN WORKERS:

Mary Kay Weathers & Betty Wright  
 Rick McCoy & Rick Tanneberger

**CONGRATULATIONS** to  
 David & Jenny Bunger  
 on the birth of a son,  
 Cameron Edward  
 Bunger, on February 18. Cameron  
 weighed 7 pounds 12 ounces and was  
 20 inches long. Also welcoming  
 Cameron is big brother Braden;



...and to Tracy & Shirley Rieff on the  
 birth of a grandson, Coby Peter, on  
 February 17. Coby weighed 8 pounds  
 2 ounces. Parents are Bethany  
 Rutherford and Robbie Collinsworth.

## WOMEN ON MISSION

March 5

7 PM in the FBC Parlor

*Week of Prayer for  
 North American Missions Emphasis*

## DECISION

### By Baptism

Anna Hall  
 4183 Quicksilver Lane  
 Springdale 72764-6679  
 872-0213



### Sunday, March 1 is CEO Day.

Please bring your donations of non-  
 perishable food items to the Infor-  
 mation Center. Most needed at this  
 time are peanut butter, jelly, soup,  
 canned meat, canned vegetables and  
 cereal. Also needed are diapers (size  
 large) and monetary donations.

## GIFTS

### IN MEMORY OF JOE HANCOCK

*Helen Davis  
 LOA Sunday School Class*

### IN MEMORY OF DATHA MULLINS

*anonymous  
 John & Cyndy Meares  
 Willadeen Walker*

### IN MEMORY OF BOBBY ROLLO

*Cheryl Eaton  
 Clara Eaton  
 John & Cyndy Meares*



Our church family extends Christian  
 love and sympathy to Gloria  
 Hancock on the loss of her husband,  
 Joe Hancock, on February 19, 2009.

### FIRST Touch February 23

Visits: 7 YTD: 17  
 Letters/Emails: 0 YTD: 178

### Next FIRST Touch

**Monday, March 2 at 6:15 PM**  
**Adult 7 Department**

# F I R S T B A P T I S T C H U R C H

Phone: 479-442-2387

Fax: 479-442-2265

### Church Staff

### Extension

Pastor - Douglas Falknor .....	12
Minister of Music - Mike Paslay .....	19
Associate Pastor - Travis Wollenberg.....	18
Minister of College & Career - Steve Moore .....	16
Minister of Students - Steve Alberts .....	21
Minister of Childhood Education - Lisa Wheat .....	20
Church Administrator - Gordon Rowell .....	15
Pastor's Secretary - Sheila Smith.....	12
Publications Secretary - Terri Johnston.....	11
Play Learn Director - Carolyn Tanneberger.....	22
Preschool Coordinator - Linda Dilley.....	23
Security—Zach Turner .....	26

P.O. Box 1324 ♦ Fayetteville, AR 72702

E-mail: fbc@fbcfayetteville.org

Corner of College and Dickson

Website: www.fbcfayetteville.org

"Voice" (USPS 195-220) is published weekly except Thanksgiving week and Christmas week by First Baptist Church, College and Dickson, Fayetteville, AR 72702. Periodicals postage paid at Fayetteville, AR. **POSTMASTER:** Send address changes to "Voice," c/o First Baptist Church, P.O. Box 1324, Fayetteville, AR 72702-1324