

JESUS WANTS TO BE MY FRIEND FOREVER

WEEK

FOUR

MARCH 2018

SMALL GROUP

2

YEAR-OLDS



first look™

TEAM

CEO

Reggie Joiner

DIRECTOR OF MESSAGING

Kristen Ivy

DIRECTOR OF PRESCHOOL STRATEGY

Brittany Compton Robertson

DIRECTOR OF CURRICULUM

Kathy Hill

DESIGN AND BRAND MANAGER

Sharon van Rossum

CREATIVE TEAM

Brittany Compton Robertson

Kathy Hill

Autumn Ward

Ashley Hiers

Donna High

Sharon van Rossum

Deb Springer

McKenzie Cause

WRITERS

Donna High

USER AGREEMENT

Scripture marked NIV is taken from the Holy Bible, New International Reader's Version™, Copyright © 1995, 1996, 1998 by International Bible Society. Used by permission of Zondervan Publishing House. All rights reserved.

These resources are intended to be downloaded and printed for use by the subscribing entity only and may not be electronically transferred to or duplicated by other non-subscribing entities. Any unauthorized reproduction of this material or incorporation into a new work is a direct violation of US copyright laws. ©2018 The reThink Group. All rights reserved. First Look® and the First Look® logo are trademarks of The reThink Group.

"STATEMENT OF FAITH" USER AGREEMENT

Orange gladly grants permission to churches, schools, and other licensees to tailor First Look® materials to fit their unique leadership requirements, locale and format preferences, and physical environment needs. However, if you wish to edit the content substantively, including Bible stories, learning activities, scripts, and any other content in which biblical principles and concepts are presented, you are obligated to do so within the doctrinal guidelines we've expressed in our Statement of Faith.

PRELUDE

SOCIAL

WORSHIP

STORY

GROUPS

HOME



BIBLE STORY

We celebrate Jesus because He is special.

PALM SUNDAY
MATTHEW 21:1-11, 15-16

MEMORY VERSE

“Come and follow me,
Jesus said.”

MATTHEW 4:19, NIRV

KEY QUESTION

Who can you follow?

BOTTOM LINE

I can follow Jesus.

BASIC TRUTH


Jesus wants to be my friend forever.

PRELUDE: Setting the tone for the experience

For Leaders Only
Monthly Overview
Create the Environment

15
MIN

SOCIAL: Providing time for fun interaction

Offer one or more of these activities as preschoolers arrive.
Train
Walk on Leaves
Dough Leaves 

10
MIN

WORSHIP: Inviting people to respond to God

Friend Forever

10
MIN

STORY: Communicating God's truth in engaging ways

Bible Story
Prayer

25
MIN

GROUPS: Creating a safe place to connect

Offer as many of these activities as your time, facilities, resources, and leadership allow.
Coats and Leaves
Moving Jesus
Leaf Parade
Palm Leaf Color

HOME: Prompting action beyond the experience

Going Home
Parent Cue



This symbol indicates an activity with potential allergens. Be sure to post allergy alert sign and inform parents at drop-off.

PRELUDE

SOCIAL

WORSHIP

STORY

GROUPS

HOME

15 MINUTES

BIBLE STORY

We celebrate Jesus because He is special.

PALM SUNDAY
MATTHEW 21:1-11, 15-16

MEMORY VERSE

“Come and follow me,
Jesus said.”

MATTHEW 4:19, NIRV

KEY QUESTION

Who can you follow?

BOTTOM LINE

I can follow Jesus.

BASIC TRUTH

Jesus wants to be my friend forever.



MOVE

an activity that uses a preschooler's natural desire to move to help them learn

1. TRAIN

WHAT YOU NEED: Chairs (1 per child)

(Option: If you do not have a chair for each child, you may substitute laundry baskets and plush animals. Instead of the children making a train with themselves in chairs, they can line up the baskets and place the plush animals in them.)

WHAT YOU DO:

BEFORE THE ACTIVITY: Ask the children to help you line up the chairs in a single file line.

DURING THE ACTIVITY: Encourage the children to sit in the chairs and pretend to be on a train. Guide them to make train sounds.

WHAT YOU SAY:

BEFORE THE ACTIVITY: “Let’s pretend we are going to see Jesus!”

DURING THE ACTIVITY: “We have to figure out a way to go. *(Pause.)* I know! We can pretend to take a train to see Jesus. Let’s use these chairs to make a train. *(Do activity.)* That’s a fantastic train! Now everyone come aboard, and let’s go see Jesus. Chugga-chugga, choo-choo!”

AFTER THE ACTIVITY: “In our Bible story today, we are going to hear about people who came to see Jesus. Let’s get ready to hear our TRUE story from the Bible to find out what happened.”

TRANSITION: Move to Bible story time by saying, “Chugga-chugga, choo-choo, going to see to see Jesus!” as you walk to the story area.

PRELUDE

SOCIAL

WORSHIP

STORY

GROUPS

HOME

15 MINUTES

BIBLE STORY

We celebrate Jesus because He is special.

PALM SUNDAY
MATTHEW 21:1-11, 15-16

MEMORY VERSE

“Come and follow me,
Jesus said.”

MATTHEW 4:19, NIRV

KEY QUESTION

Who can you follow?

BOTTOM LINE

I can follow Jesus.

BASIC TRUTH

Jesus wants to be my friend forever.



PLAY

an activity that encourages preschoolers to follow guidelines while having fun and learning new concepts

2. WALK ON LEAVES

WHAT YOU NEED: A long piece of brown butcher paper, green pom-poms, and floor tape

WHAT YOU DO:

BEFORE THE ACTIVITY: Tape the butcher paper to the floor in the activity area to make a pathway.

DURING THE ACTIVITY: Ask the children to toss “leaves” (pom-poms) onto the pathway. Encourage the children to walk on the leaves and the pathway. Repeat several times.

WHAT YOU SAY:

BEFORE THE ACTIVITY: “There is a pathway in our room. (Point.) Let’s toss some leaves on it!”

DURING THE ACTIVITY: “Perfect! There are leaves all over the path. Let’s all walk on the path and the leaves!” (Do activity.)

AFTER THE ACTIVITY: “In our Bible story today, we are going to hear about someone very special who walked on a pathway with leaves on it. I cannot wait to find out who it was!”

TRANSITION: Move to Bible story time by walking on a certain pathway to the story area. This can be stepping on certain items in the carpet if you have shapes or items in the carpet, stepping in the center of each tile while not stepping on lines, or simply following the person in front of you.

PRELUDE

SOCIAL

WORSHIP

STORY

GROUPS

HOME

15 MINUTES

BIBLE STORY

We celebrate Jesus because He is special.

PALM SUNDAY

MATTHEW 21:1-11, 15-16



EXPLORE

an activity that channels a preschooler's innate curiosity into a discussion of the week's crucial concepts

MEMORY VERSE

"Come and follow me,"
Jesus said."

MATTHEW 4:19, NIRV

KEY QUESTION

Who can you follow?

BOTTOM LINE

I can follow Jesus.

BASIC TRUTH

Jesus wants to be my
friend forever.

3. DOUGH LEAVES

Be sure to list the items you will be using today on the "Allergy Alert Poster" and post it at the door to your room.

WHAT YOU NEED: "Allergy Alert Poster," white cardstock, green Play-Doh®, and leaf cookie cutters (1 per child)

WHAT YOU DO:

BEFORE THE ACTIVITY: Copy "Allergy Alert Poster" on white cardstock and hang on the door. Give each child some Play-Doh and a leaf cookie cutter.

DURING THE ACTIVITY: Encourage the children to press the cookie cutter into the Play-Doh to make leaves. Repeat as desired.

WHAT YOU SAY:

BEFORE THE ACTIVITY: "Yay! We get to play with Play-Doh today!"

DURING THE ACTIVITY: "We are going to talk about leaves in our Bible story today. Let's use these cool cookie cutters (*hold up*) to make leaves out of the dough." (*Do activity.*)

AFTER THE ACTIVITY: "Great job making the leaves. They are awesome! The people used leaves to celebrate someone very special in our Bible story today. Let's get ready to hear our Bible story and find out who it was."

TRANSITION: Move to Bible story time by pretending to step on leaves as you walk to the story area.



PRELUDE

SOCIAL

WORSHIP

STORY

GROUPS

HOME

25 MINUTES

**HEAR
FROM GOD**
MEMORY VERSE
REVIEW



MOVE

an activity that uses a preschooler's natural desire to move to help them learn

BIBLE STORY

We celebrate Jesus because He is special.

PALM SUNDAY
MATTHEW 21:1-11, 15-16

MEMORY VERSE

"Come and follow me,"
Jesus said."

MATTHEW 4:19, NIRV

KEY QUESTION

Who can you follow?

BOTTOM LINE

I can follow Jesus.

BASIC TRUTH

Jesus wants to be my friend forever.

1. COATS AND LEAVES

WHAT YOU NEED: "Coats and Leaves" Activity Page, white cardstock, scissors, and floor tape

WHAT YOU DO:

BEFORE THE ACTIVITY: Copy "Coats and Leaves" on cardstock and cut on the dotted lines. Tape the coats and leaves in an alternate pattern to the floor in a pathway. Each item should be one foot apart from the others. Be sure to tape each item securely to the floor so that no one slips. You will need 5 of each for a total of 10 items taped to the floor.

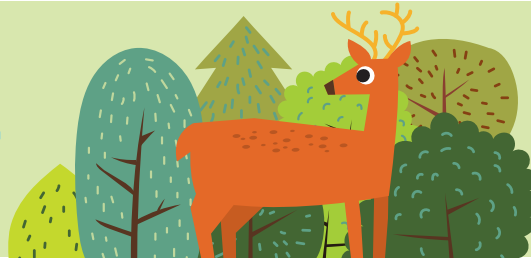
DURING THE ACTIVITY: Encourage the children to jump from item to item in the pathway as they say the memory verse. Repeat several times.

WHAT YOU SAY:

BEFORE THE ACTIVITY: "There are coats and leaves on the ground just like in our story today."

DURING THE ACTIVITY: "Let's walk on them just like Jesus did while we say our memory verse." (Do activity.)

AFTER THE ACTIVITY: "Great job walking on the path! Our memory verse tells us that we can follow Jesus. All of the people who came to see Jesus in our story today wanted to follow Jesus. We can too! **Who can you follow? I can follow Jesus!**"



PRELUDE

SOCIAL

WORSHIP

STORY

GROUPS

HOME

25 MINUTES

TALK
ABOUT GOD
BIBLE STORY
REVIEW



CREATE

an activity that allows preschoolers to review the Bible story, bottom line, or memory verse by creating a craft to take home

BIBLE STORY

We celebrate Jesus because He is special.

PALM SUNDAY
MATTHEW 21:1-11, 15-16

MEMORY VERSE

“Come and follow me,
Jesus said.”

MATTHEW 4:19, NIRV

KEY QUESTION

Who can you follow?

BOTTOM LINE

I can follow Jesus.

BASIC TRUTH

Jesus wants to be my friend forever.

2. MOVING JESUS

WHAT YOU NEED: “Path” and “Jesus on Donkey” Activity Pages, brown cardstock, white cardstock, utility knife, craft sticks (1 per child), scissors, crayons, leaf stickers, and clear tape

WHAT YOU DO:

BEFORE THE ACTIVITY: Copy the “Path” Activity Page onto the brown cardstock. Use the utility knife to cut a slit in the middle of the path on the dotted line. Copy the “Jesus on Donkey” Activity Page onto the white cardstock and cut on the dotted lines.

(NOTE: Be sure to only use the utility knife when the children are not present. It is best to prepare for this activity before any child enters the classroom.)

DURING THE ACTIVITY: Encourage the children to color the cutout of Jesus and the donkey. Help the children tape the cutout to the top of a craft stick.

AFTER THE ACTIVITY: Help the children place the bottom of the craft stick inside the slit on the Activity Page. Show the children how to move the craft stick from side to side to make Jesus move down the path. Allow the children to place leaf stickers on the pathway.

WHAT YOU SAY:

BEFORE THE ACTIVITY: “We are going to make a picture of Jesus riding on the donkey just like we heard about in our story today.”

DURING THE ACTIVITY: “Here is our path. (Point.) Now we can put Jesus and the donkey on the stick to make them ride on the path. (Do activity.) Perfect! Everyone was so excited that Jesus was coming. Jesus came down the road on a donkey. (Move craft stick.) Everyone laid down their coats and palm leaves for the donkey to walk on. They were also waving the palm leaves and saying, ‘Hosanna!’ They were so excited that Jesus was here!”

AFTER THE ACTIVITY: “Everyone was so excited for Jesus to come because He is special. They wanted to follow Jesus. We can all follow Jesus too. **Who can you follow? I can follow Jesus!**”

PRELUDE

SOCIAL

WORSHIP

STORY

GROUPS

HOME

25 MINUTES

**LIVE
FOR GOD
APPLICATION
ACTIVITY**



MOVE

an activity that uses a preschooler's natural desire to move to help them learn

BIBLE STORY

We celebrate Jesus because He is special.

**PALM SUNDAY
MATTHEW 21:1-11, 15-16**

MEMORY VERSE

"Come and follow me,"
Jesus said."

MATTHEW 4:19, NIRV

KEY QUESTION

Who can you follow?

BOTTOM LINE

I can follow Jesus.

BASIC TRUTH

Jesus wants to be my friend forever.

3. LEAF PARADE

WHAT YOU NEED: No supplies needed

(Option: If you choose, you can add leaves to your parade by using the "Palm Leaf" Activity Page. You will need to copy the Activity Page onto green cardstock and cut on the dotted lines. Give each child one leaf from the Activity Page and encourage them to wave the leaves during the parade.)

WHAT YOU DO:

BEFORE THE ACTIVITY: Guide the children to stand in a single file line behind you. *(If you choose, give the children the palm leaves.)*

DURING THE ACTIVITY: Lead the children in a parade around the room. If possible, lead the children in the hallways around the church. Encourage the children to wave their hands or palm leaves as they walk.

WHAT YOU SAY:

BEFORE THE ACTIVITY: "Let's celebrate Jesus with a parade, because He is special."

DURING THE ACTIVITY: *(Line the children up.)* "Now we are ready! Be sure to wave your hands *(or palm leaves)* just like the people did in our story today. Let's celebrate Jesus!" *(Do activity.)*

AFTER THE ACTIVITY: "That was so much fun! We celebrate Jesus because He is special! The people in our story wanted to follow Jesus. We should follow Jesus too! **Who can you follow? I can follow Jesus!**"



PRELUDE

SOCIAL

WORSHIP

STORY

GROUPS

HOME

25 MINUTES

**LIVE
FOR GOD
APPLICATION
ACTIVITY**



CREATE

an activity that allows preschoolers to review the Bible story, bottom line, or memory verse by creating a craft to take home

BIBLE STORY

We celebrate Jesus because He is special.

PALM SUNDAY
MATTHEW 21:1-11, 15-16

MEMORY VERSE

“Come and follow me,
Jesus said.”

MATTHEW 4:19, NIRV

KEY QUESTION

Who can you follow?

BOTTOM LINE

I can follow Jesus.

BASIC TRUTH

Jesus wants to be my friend forever.

4. PALM LEAF COLOR

WHAT YOU NEED: “Palm Leaf Color” Activity Page, white cardstock, small sponges, paper plates, and green paint

(Option: If you do not want to paint this week, consider substituting the sponges and paint with green dot markers.)

WHAT YOU DO:

BEFORE THE ACTIVITY: Copy the “Palm Leaf Color” Activity Page onto the cardstock. Pour ¼ cup of green paint onto a paper plate. You will need one plate of paint for every two children.

DURING THE ACTIVITY: Help the children dip a sponge into the paint and then dab it inside the leaf on their Activity Page. Repeat until the entire leaf is painted.

AFTER THE ACTIVITY: Lay the Activity Pages in a safe place to dry. Wipe any messy fingers with wet wipes.

WHAT YOU SAY:

BEFORE THE ACTIVITY: “We learned that the people laid leaves down for Jesus to walk on. They also waved them because they were so happy to see Him!”

DURING THE ACTIVITY: “Let’s make a leaf just like in our story. They wanted to follow Jesus. We can follow Jesus too.” *(Do activity.)*

AFTER THE ACTIVITY: “Fabulous leaves! When they dry, you can use them to tell your family that we can all follow Jesus, just like the people did in our Bible story. **Who can you follow? I can follow Jesus!**”