

Watson Crane Attachments



5000 CA



Made in America • Best in the World



Crane Attachments

*Designed to be mounted on a 40 ton or larger crane.
Simply Productive.*

Extremely versatile, with the power to keep you turning to the right.

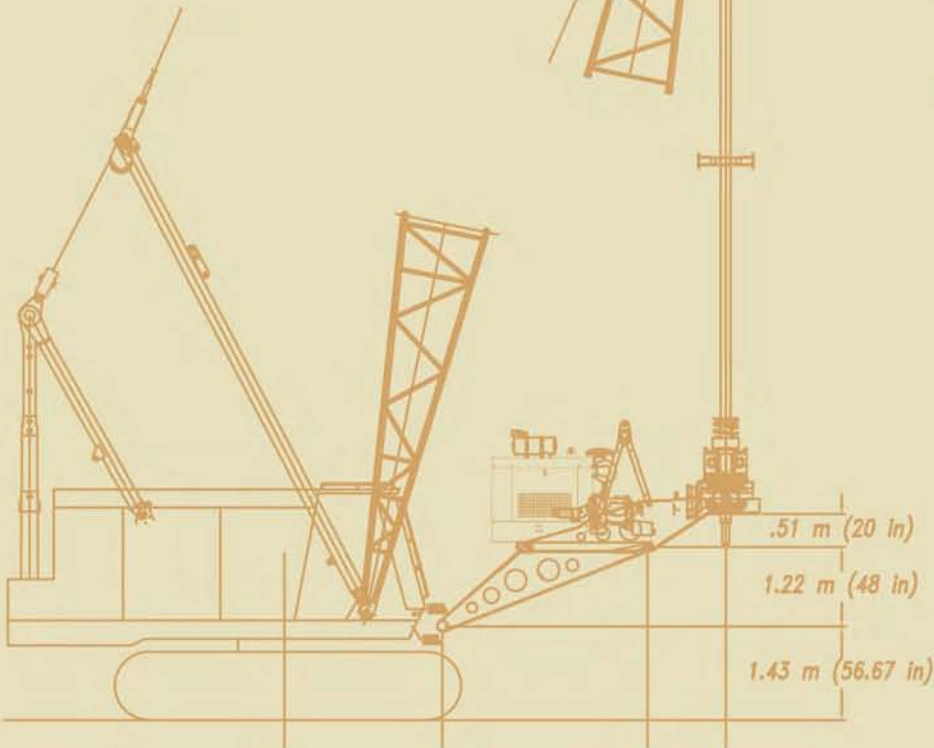
Attachment Info



5000 CA



6100 CA



Features:

- John Deere 200hp diesel engine
- Mechanical drive train with Allison torque converter powershift transmission
- Multiple kelly configurations
- Roller type kelly drive - allows for kelly feed under full torque
- Full controls & instrumentation

Options:

- Hydraulic leveling system
- Hydraulic positioning slide
- Hydraulic crowd system
- Heavy duty outer element swivel



Made in America • Best in the World



800-927-8486 • Fort Worth, Texas

Specifications:	SAE UNITS	ISO
Max Hole Diameters	120 in	305 cm
Max Drill Depth	Variable - Customer & Crane dependent	
Rotary Torque	113,000 - 180,000 ft lb	145 - 244 kNm
Crowd Force	35,000 lb	156 kN
Max Drill Speed	180 rpm	180 rpm
Bridge	19 ft Standard	5.8 m
Minimum Crane Capacity	40 tons	36,287 kg
Typical Attachment Weight	12,000 lb	5,443 kg

Specifications subject to change depending on configuration.