

# The Kids' Place

## Before & After School Care Newsletter

Mission Statement: "Bringing families together through Christ-centered learning."



February 2018

"For great is your love, reaching to the heavens; your faithfulness reaches to the skies."

Psalm 57:10

From the Director,

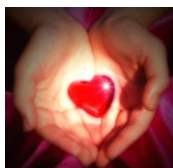
February provides us with the perfect opportunity to share Gods' love. Let us take time to express your feelings with family and friends. We need to remember that each day is a gift from God.



Let us love others the way that God loves us



God Bless you, Vicki Ducharme



### Public/Sculptor Legacy

Monday Feb. 19<sup>th</sup>

No School  
Out Reach Project  
Lunch: Sack

\*\*\*\*\*  
Park Avenue

Monday Feb. 19<sup>th</sup>

No School  
Out Reach Project  
Lunch: Sack



Parents please remember, if you need care on a school holiday, you **MUST** sign up by the **deadline date**. I staff according to our numbers and call and confirm our numbers in advance for all field trips. **Your child may not attend if he is not signed up**. Therefore, it is extremely important for you to let us know in advance. If you **DO** sign up and are a **NO SHOW** your account will be charged \$10.00 unless you give a 48 hour notice.

### Email



You may communicate by email with us but we request you email both emails to make sure that we receive your message. For a change in pick-up we prefer phone messages :o)

Our email is [vducharme@ircumc.com](mailto:vducharme@ircumc.com) and [bgibbs@ircumc.com](mailto:bgibbs@ircumc.com)

### ♥ Out Reach Project ♥

We are accepting donations for the nursing homes: Nail Polish, Word Search Puzzle's Fuzzy Socks (with rubber on bottom) we will be also making crafts & cards for the residents



Summer Camp Registration Begins for Elementary & Preschool

In House: Mon. March 26<sup>th</sup>, 2018

Public: Mon. April 9<sup>th</sup>, 2018

All paperwork and fees must be paid and completed to hold your child's space.

**Space is limited**

Please register before we open to the public!

