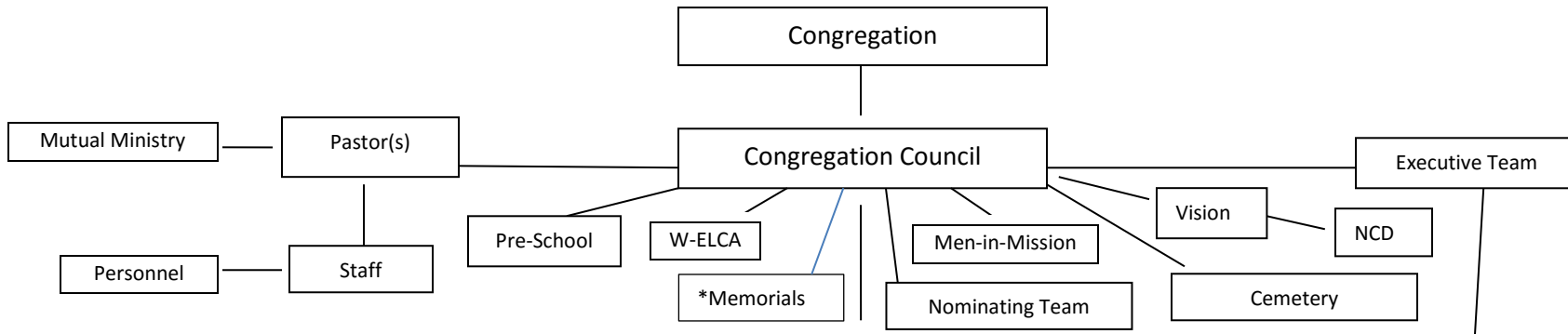


ST. MARK'S LUTHERAN CHURCH -- CLAREMONT, NORTH CAROLINA

DIAGRAM OF CONGREGATIONAL LEADERSHIP RESPONSIBILITIES

2016



Congregation Care	Worship	Learning Christian Formation	Fellowship	Witness/Social Ministry		Youth & Family	Support	Global Missions	Property	Finance	*Memorials	Technology
Communion Envoy	Choirs & Praise Team	Sunday School	Assists other teams	Outreach Activities	ECCCM	Sr. High Ministry	Year-round stewardship emphasis	Lutheran World Relief	Legal & Safety Compliance	Investments/Endowment Management	Designated & Non-Designated Memorial Gifts	Nave A/V Equip & Software
Stephen Ministers	Supplies	"One"derful Wednesdays			Soup Kitchens	Jr. High Ministry		Lutheran Social Services	Buildings & Grounds			
Care Givers	Instruments	VBS		Member Visitation	Hunger	Faith Alive	Stewardship Campaign	Milk Pail	Equipment	Budget Formation and Presentation	Acknowledgment of Gifts	Coordination Tech use w/ Teams
Bereavement Support	Worship Assistants	Confirmation	Special Events		Habitat for Humanity	College Ministry		Mission Partners	Service Contracts			Church wide A/V equip
		Nursery	Seder	Public Relations	Local Area needs/drives		Offering Envelopes		Cemetery	Financial management & reporting	Compilation of Memorial Gift List	Training for A/V use
Congregation Prayer List	Altar Flowers	Christmas Program	Homecoming		Bloodmobile	Scouts			Custodial Services			Inventory & Maint. of equip
	Special Services	Education Opportunities	New Member Reception	Advertising	Disaster Response	Retreats & Summer Camp	Special Designated Funds	Disaster Response	Routine Inspections	Tabulators		
	Altar Guild	Young Adults	Leadership Retreats	Hospitality	Food Pantry	Family Events		ELCA World Hunger	Capital Improvement			
					Back Pack Program	Youth Gatherings						