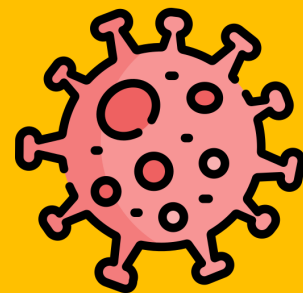


Protocols for Public Worship



Guidelines for the safe re-opening of the church during the Amber Phase



Online pre-registration is required. A limited number of seats will be reserved for visitors and those without internet access.



Masks must be worn by all persons at all times. Young children who cannot or will not wear a mask must remain with family.



Physical distancing of a minimum of 2 meters (6 feet) must be maintained at all times (except with members of the same household).



Please use hand sanitiser placed throughout the building upon entering and any time you touch your mask or any surface.



All worshippers must enter by the Brock St doors and be registered in the Narthex before proceeding into the worship space.



Please refrain from physical contact with anyone outside your household. There will be no Passing of the Peace in the liturgy.



Offerings may be placed on the plate inside the door before worshippers take their seat. There will be no collection of the Offering.



Communion will be received at the Chancel step in bread alone. Please follow the directions in the order of service.