



St. Mark's Lutheran Church

Messenger

Spokane, WA

February 2019

Vol. 2019, No. 2

MESSAGE FROM PASTOR EDWIN

*Arise, shine; for your light has come,
and the glory of the Lord has risen upon you.
For darkness shall cover the earth,
and thick darkness the peoples;
but the Lord will arise upon you,
and his glory will appear over you.
Nations shall come to your light,
and kings to the brightness of your dawn.
All those from Sheba shall come. They shall
bring gold and frankincense, and shall pro-
claim the praise of the LORD.*

Isaiah 60:1-3, 6b

These words are selected by our lectionary to be read every year at the Festival of Epiphany. Certainly, part of the reason is the text's prophetic nature as it relates to the coming of the wise men as, quite literally, foreign kings follow the brightness of the star to find the Christ Child and pay him homage bringing gold, frankincense, and myrrh.

In many ways, the notion of God's revelation to the gentile nations was controversial in Jesus' day, even though it was foretold by Isaiah some five centuries prior. Today, we confess a universal all-embracing church (that is what the word "catholic" means in our creeds), and so it is easy to take for granted the notion that Christ came to save the whole creation. But we should never forget that God's love is always bigger than human limitations, always pushing the boundaries wider and wider to include all in the kingdom of God.

In this season of Epiphany, Jesus is revealed as the light of the nations. We see this in three traditional texts that are always used at the start of this season: (1) the coming of the wise men, (2) Jesus' baptism by John in the Jordan, and (3) Jesus' first miracle of changing water to wine at the wedding in Cana. Two of these three texts have to do with hospitality:

continued next page



OLD. GRAY. DREARY.
Sound like the view from
your window?

Here are some ways to brighten winter for others who feel the cold - with a spillover heart-warming effect for you!

SPEAR (East Central Neighborhood Program)

During the cold winter months, our SPEAR families are in need of some protein-based food items including soups, stew, chili, and peanut butter. Also, feminine hygiene products are always appreciated, as they aren't covered by food stamps. Please put your donations in the SPEAR basket in the narthex. Thank you!

SEEKING VOLUNTEERS

Salem Lutheran Church, here in Spokane, has opened its doors as an emergency shelter for the winter. The congregation is seeking volunteers who would be willing to welcome folks as they arrive for the evening. You would have the support of other adult volunteers from a variety of groups. If you have an interest in helping out, contact Pastor Edwin who will happily connect you with the coordinators at Salem.

AND COMING IN MARCH ...

Our annual Fat Tuesday Jazz Mass is **Tuesday, March 5, at 7:00 pm**. Many music lovers in the community look forward to this event and it's a great opportunity for members to invite friends to St. Mark's.

See the full Lent/Easter schedule on page 3.

the welcoming of the Wise Men by Jesus' family, and Jesus providing wine at the wedding banquet (running out of wine at such a festivity would have been embarrassing for the hosts). These stories of our faith illuminate for us in a little way who God is as seen through the person of Christ.

I also think these stories raise questions about our own walk of faith, our discipleship as followers of Christ. How can I welcome the stranger? How can I express generosity to those I know and strangers alike? What is God calling me to do in relationship with others? How can we welcome visitors here at St. Mark's?

It's this last question that I'll end on. As we welcome people to our worship, we might want to ponder what it might be like for someone to be visiting St. Mark's for the first time, or even to be in a church for the first time. I think it's easy for some of us to say hello to strangers in worship; for others, it maybe is something we could be better at. Perhaps less obvious may be that visitors might not be familiar with our pattern of worship here. In such a case, sitting with a visitor and helping them navigate the service would be a wonderful act of hospitality.

Recently, a visitor shared with me that they were asked to move pews when a member of St. Mark's said that they were sitting in the member's spot. I was surprised to hear that. I have considered that it might have been meant as a joke (after all, we do delight in humor here). But I wonder if the St. Mark's member who said this considered how such a comment would be received by a first-time visitor to our church. Joking aside, we don't have assigned seats at St. Mark's and we ought to be mindful both of how we might be perceived by strangers and visitors as well as remember that the light of Christ draws all people to him. May we rejoice to all be gathered, here at St. Mark's and in the kingdom of God, just as the Wise Men of old rejoiced to behold the Word Made Flesh.

Pastor Edwin Weber

NOTE THIS!



CHURCH COUNCIL

St. Mark's church council will meet **Monday, February 11, at 7:00 pm** in the conference room.

SOCIAL MINISTRY MEETING

Join this very active social ministry group when they meet monthly at the church. The next meeting will be held in Pastor Eric's office on **Sunday, February 17, at 12:00 noon**. If you have questions, please chat with one of the pastors, Pat Manz or Patti Berg.

CHURCH OFFICE CLOSURE

The St. Mark's church office will be closed **Monday, February 18**, for Presidents' Day.

TABLE OF GRACE

After a very successful November celebration, we are bringing Table of Grace back. Join us for food, fellowship, worship, and discussion **February 24 starting at 5:30**. We will be doing a taco bar and would appreciate your help bringing different food items. Look for a sign-up sheet coming soon if you are willing to help. If you have any questions, feel free to contact Pastor Edwin or Susan Hagen.

CHANCEL CHOIR

St. Mark's Chancel Choir rehearsals take place on **Thursdays at 7:15 pm** in the music room. If you are interested in singing in the choir we'd love to have you. If you have questions please contact Debbie Hansen at 710-1334.

SOCIAL MINISTRY AT ST. ANN'S

St. Mark's volunteers provide a meal at St. Ann's Catholic Church in the East Central neighborhood on **Sunday, March 17**. We'll be honoring St. Patrick's Day with this meal and we hope to get some new folks involved. Meal prep is from 9:30 – 12:30, then serving, and cleanup, starting at 12:30 – 3:00 pm. Please contact Donna Evenson at gdevenson@yahoo.com or 434-4930 if you are interested in participating.

MONEY MATTERS

Fund	December Giving	2018 Operating Budget - Year to Date			
		Giving	Expenses	Budgeted	Net - YTD
General	\$ 149,349.11	\$ 756,321.73	\$ 769,312.45	\$ 846,497.00	\$ -12,990.72
Mortgage	\$ 11,011.00	\$ 88,633.27	\$ 88,310.18*	\$ 70,284.00	\$ 323.09

*including \$17,000 in capital improvements

As we close the books on 2018 giving, we are so relieved and happy to report that the congregation stepped up to our challenge and gave the second largest amount in a month in December. Thanks to all contributions, large and small, we shrank the deficit to a mere \$13,000. We still need to tighten our belts, so to speak, and watch our spending, but we are in much better shape than when we went into the Christmas season.

The overage in the Mortgage Fund was used for special capital improvements; the beautiful new fence along the parking lot is an example. We are grateful for this extra income which, beyond covering our monthly mortgage payment, also paid for several special projects. There are always unplanned building expenses that crop up every year.

I'm happy to report that we ended up with 191 households pledging to give to St. Mark's in the coming year. Of those cards, 71 indicated an increase in giving, for a total of \$84,000, which is more than double the average increase in the past four years. We are always happy to take pledges; extra cards are in the church office. If you still wish to share your pledge with us, it is always helpful to have that information.

Thank you to everyone who is committed to the vibrant life of our church. It takes dedication in giving, time and effort to have such a wonderful church home.

Loris Stupel
Financial Secretary
747-6677
finance@stmarks-spokane.org

FAT TUESDAY, LENT AND EASTER SCHEDULE

Easter comes late this year, but the season begins early in March. Mark your calendar for these dates:

Fat Tuesday Service, March 5, 7:00 pm

Ash Wednesday, March 6, 7:00 pm

Midweek Lenten Worship & Soup Suppers
begin Wednesday, March 13, 6:00 pm and
continue through April 10.

HOLY WEEK TELLS THE STORY IN FIVE PARTS:

Palm Sunday, April 14, 8:30 am and 10:45 am

Maundy Thursday, April 18, at 7:00 pm

Good Friday, April 19, at 7:00 pm

Easter Vigil, April 20, at 7:00 pm

Easter Sunday, April 21, with worship at 8:00,
9:30 and 11:00 am.

Learning for All Ages

REVELATION BIBLE STUDY

Despite being widely popularized in the media, the book of Revelation is often misunderstood, standing as an enticing enigma to many. We continue interpreting the complex and vivid imagery of the last book of the Bible through February, led by Pastor Edwin. We meet **Thursday evenings from 6:00 - 7:00 pm**, in the conference room at St. Mark's. We hope to see you there!

SUNDAY SCHOOL

Godly Play Sunday School welcomes all children, ages three years through sixth grade. Preschool/kindergarten meet upstairs in the Parish House, first grade through third grade meet in the upstairs classroom next to the nursery in the church, and fourth grade through sixth grade meet upstairs in the Parish House. Class ends with music for all ages in the Parish House living room, and children can be picked up by parents there. Class is **every Sunday in February, 9:45 am - 10:35 am**. Please contact Katie Kadlec with any questions at kadlecfam@gmail.com.

ST. MARK'S SITE OF GODLY PLAY TRAINING

Godly Play has been such a positive success for St. Mark's Sunday School program! We have been seeing growing numbers of children and families since we began the program last year.

St. Mark's now has an amazing opportunity to host an upcoming Godly Play training, **March 15-17**. An accredited Godly Play trainer will be here to support our current teachers, inform interested families, and to educate local churches about this program. If you would like information on this training please contact Katie Kadlec at kadlecfam@gmail.com.

ADULT FORUM

Conference room, Sundays at 9:45 am

Feb. 3, Vocation Myth: "I'm Called to One Special Thing"

Feb. 10, Vocation Myth: "It All Happens Right Away"

Feb. 17, Mozambique School Lunch Initiative (Cara Myers)

Feb. 24, TBD

PASTORAL STAFF UPDATE

At the congregational meeting in January, Pastor Kate LePard announced that she will be reducing her pastoral commitment to ¾-time beginning in 2019. This change will allow her to enjoy more family time, pursue her other interests and hobbies, and spend more time at their lake home.

When Pastor Finch retired in June 2015, Pastor Kate increased her work schedule to a full-time call which has lasted through the transition period, the lengthy call process, and most recently, Pastor Eric's six-month sabbatical. St. Mark's is fortunate now to have the leadership of three talented pastors to grow our ministries and lead us in the future. Pastor Kate will continue to minister to all of us with special emphasis on women's ministry, teaching confirmation and other classes, and preaching and leading worship.

Thank you, Kate, for sharing your many talents and gifts at St. Mark's. Enjoy your extra day off each week!

ANNOUNCEMENTS

Marriage

Blessings on the marriage of **Briana Wenke**, daughter of **Cindy & Steve Wenke**, to **Jesse Wityczak**.

Sympathy

Prayers for the family of **William Frandsen** at the time of his death.

NOTE FROM MARTHA ICE

I now have given up my car and am no longer attending St. Mark's worship services regularly. However, I still feel deeply attached to the congregation through weekly delivery of service recordings, pastoral visits, "Mary Cares" cards, newsletters, and other member contacts.

I am grateful for all of these. I "attend" worship with you—praying with you, singing the liturgies and hymns with you (a week later, but I don't mind that at all); and with you, sensing God's presence.

It is satisfying to know that many others are being blessed by this same ministry.

THANK YOU FROM SPEAR

Merry Christmas, friends. Last night was SPEAR'S Christmas party. We joined with the youth group of One Heart Center across the street from us, the former Grace Lutheran Church. Our youth groups and their families had a spaghetti dinner and some fun activities for all to do.

The highlight of the evening, of course, was when the presents were given out. Friends, I wish you could have heard and seen the joy when the kiddos unwrapped their gifts. You, friends, have made an immense difference in the lives of our kids. Thank you for sharing your gift of love and blessings.

God bless you and your family and friends. You are loved and cherished.

-Sheryl Kruger, on behalf of SPEAR (Serving People through Education, Arts, and Recreation) in the East Central Neighborhood.



THANK YOU FROM LCS

The following thank you notes are from various Lutheran Community Service staff members after their Foster Youth Program Christmas Celebration and distribution of gifts which took place at St. Mark's on December 13.

Thank you so much for opening your doors to our youth, and for making sure they have wonderful gifts to open this holiday season. We appreciate your care and warmth. Callie

Dear Susan and St. Mark's – Thank you so much for all your help. You all do amazing work. You really help our program and youth to have an amazing holiday. Thank you again! God Bless You All! Zach

St. Mark's – Thank you for all your support! We are lucky to have amazing people like you guys. Happy Holidays! Lee

Thank you! We so appreciate all you do! Shelly

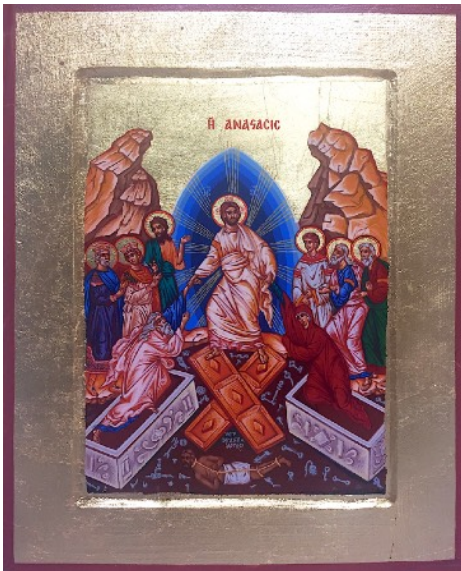
Thank you! We appreciate everything you've done for our program. – Julie

Dear St. Mark's church and congregation – Year after year you come through for our program and our kids during the holidays. Thank you for all that you do for our program.

Aimee Shields



*Pictures from
SPEAR Christmas
party.*



ICONS GIVEN TO ST. MARK'S

Perhaps you have noticed our new icons and icon stands in the worship space, located behind the votive candle stands on each side of the church.

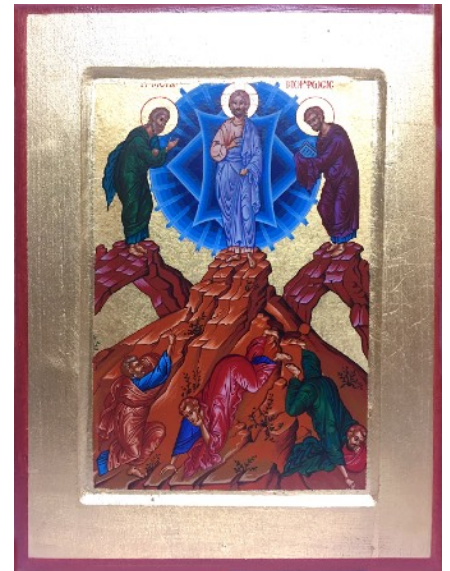
The icons were a gift from Randy Darst and the stands were build and gifted by Frank Payne. We are so grateful for these gifts as they enrich our worship lives!

Icons are a traditional Christian art form that date back to the very earliest days of the church. While icons are used in many different Christian traditions, they are most associated with the Eastern Orthodox. These icons are seen as "windows to heaven" as they give a glimpse of the kingdom of heaven to the faithful who look upon them. For many, these images help focus their prayer as well as provide a visual for meditation on the mysteries of our faith.

As an art form, icons have been developed into several different schools, ranging from Byzantine and Russian, to Syrian and Egyptian. Most icons are in a portrait style, often depicting a saint, Mary, or Jesus. Other icons, including the two displayed in our worship space, show

scenes from the Bible, especially from Jesus' life and ministry. Icons are traditionally "written" (ie. painted) using tempera but are more often printed today. They typically use the same depictions over and over again with minor stylistic changes.

The right side of the sanctuary displays the Transfiguration. Jesus stands on the mountain peak with Moses and Elijah in splendor. His disciples, Peter, James and John, avert their faces from the brightness of Christ's glory. On the left side of the church we have displayed the Resurrection. Here, Jesus stands on the fallen gates or doors of hell which have been removed from their hinges as Christ frees those caught in the bondage of death. He grabs with each hand Adam and Eve, lifting them out of their tombs. On either side stand important figures from the Old and New Testament: the kings David and Solomon (both crowned), John the Baptist, Abel, and the prophets Isaiah and Jeremiah. Below, we see Satan who is chained and bound, crushed beneath Christ, symbolizing his victory over the grave. May these icons bless your devotion during worship here as they have for centuries among countless Christians of many different traditions.



Faith and Fellowship Groups

SATURDAY EVENING POTLUCK

First Saturday, February 2, 6:30 pm

On the first Saturday of each month **you** are welcome to join us for a potluck immediately following the 5:30 service. Great food! Great fellowship! Bring you favorite dish and join this fun group.

SCRIPTURE & COFFEE

Tuesdays, February 5, 12, 19, 26, 10:30 am

This is a Bible-based conversation in the conference room to study the Scripture texts for the week. **All** are welcome.

continued page 8

Bazaar Funds Distribution for 2018

International/National Benevolences

ELCA World Hunger	\$ 300
Feed My Starving Children.....	\$ 200
Friends of Mwangaza, Inc. (Africa)	\$ 300
Lutheran World Relief	\$ 600
Mozambique School Lunch Initiative.....	\$ 300
(Dr. Paul & Cara Myers' program)	
Our Savior's Lutheran Church, Box Elder, MT	\$ 300
TOTAL	\$ 2,000

Local Benevolences

2 nd Harvest Food Bank.....	\$ 200
Cup of Cool Water	\$ 200
Meals on Wheels.....	\$ 200
St. Mark's Meal Ministry	
Dining at All Saints Lutheran	\$ 200
Shalom Ministries	\$ 200
St. Ann's Neighborhood Lunch Program	\$ 200
Salem Lutheran Church (support of emergency shelter needs)	\$ 200
Teen Challenge	\$ 200
Union Gospel Mission	\$ 200
Women's & Children's Free Restaurant	\$ 200
TOTAL	\$ 2,000

St. Mark's Lutheran Church

Special Church Needs	\$ 2,000
TOTAL	\$ 2,000

The St. Mark's annual bazaar netted a total of \$6,000 this past November. We appreciate the many hands that helped with all the various aspects of this event. This money was raised by the many members of this congregation who contributed time and talents or purchased raffle tickets, silent auction items, and baked goods.

New this year, we want to support our fellow Lutheran church, Salem Lutheran, as they open their doors as an emergency shelter for winter.

Special Church Needs is a category that can take different shapes in different years. Here at St. Mark's there are always things that come up which are not budgeted for and this is a great way for the women of St. Mark's to help out. For example, one year the funds were used to build the shed outside the kitchen door. This year some of the funds will go to replacing tablecloths for memorial receptions and underwriting the Godly Play Training Course that will take place at St. Mark's in March. Thank you to all who support the bazaar.

GROUPS

continued from page 6

EAT, PRAY, LAUGH

First Tuesday, February 5, 7:00 pm

Questions: Pastor Kate, 747-6677

Eat, Pray, Laugh will meet in the parish house. **All women** are invited to this fellowship group for conversation, laughter, prayer and refreshments.

WALKING CIRCLE

Second Friday, February 8, 10:30 am

Questions: Pat Sowder, 747-6677

This group of women who love to walk, talk, and eat will meet at the church. Walking destination to be determined based on weather. All are welcome.

CANCER SPIRITUALITY GROUP

Second Sunday, February 10, at 12:00 noon

Questions: Elaine Orness, 838-2696 or 385-8205

This group will meet in the conference room with a light lunch being served. **Those who are in remission or undergoing treatments as well as any family members** are welcome to attend. Pastor Edwin will attend and lead the discussion.

GEN-X GROUP

Second Tuesday, February 12, 7:00 pm

Questions: Pastor Eric, 747-6677

This group of **Gen-X aged men (40's through 50's)** meets in various places throughout the year. Pastor Eric leads a discussion on faith and life issues. Location is to be determined.

SUNRISE SAINTS & SINNERS

Second & Fourth Wednesday, February 13 & 27, 6:30 am

Questions: Roger Chase, 838-1040

This **men's group** meets at The Chalet Restaurant on 30th and Grand Blvd. You'll have lots of

laughs and crazy discussions about everything, while having breakfast. All men are welcome, saints and sinners!

MOM'S CONNECT

Second & Fourth Thursday, February 14 & 28, 10:00 am

Questions: Katie Kadlec, 360-600-3633

This new group is for **moms with children of all ages**, from birth through high school. All moms are invited to meet in the conference room for fellowship and discussion. Child care will be provided. TOPICS: Feb. 14, *Praying for and with your children*; Feb. 28, *Creating Balance*.

EMPTY NESTERS

Sunday, February 17, 4:00 pm

Questions: Susan Hagen, 747-6677

This group is for **parents who have young adults** recently out of high school or who will be flying the nest in the next year or two. We all bring an appetizer and beverage of choice to share. Location is to be determined.

THEOLOGY ON TAP

Third Tuesday, February 19, 7:00 pm

Questions: Pastor Edwin, 747-6677

This group has great conversation and fellowship with **"30ish or younger"** folks at Two Seven Public House in Lincoln Heights. Pastor Edwin will lead a discussion and buy a few appetizers to share.

BOOK GROUP

Last Wednesday, February 27, 7:00 am

Questions: Pat Sowder, 747-6677

St. Mark's Book Group meets monthly at Forza Coffee in Lincoln Heights. Watch the bulletin or call the office for the name of the book to be discussed. **All book lovers** are welcome!

ST. MARK'S LUTHERAN CHURCH

316 E. 24th Avenue
Spokane, WA 99203

SERVICES

Sunday 8:30 and 10:45 am
Saturday 5:30 pm
Nursery provided all services

OFFICE HOURS

Monday-Friday 9 am-noon, 1-4:00 pm
(Friday 3:00 pm)

PASTORS

Eric Dull
Kate LePard
Edwin Weber

Phone: (509) 747-6677
FAX: (509) 458-2757

office@stmarks-spokane.org

WWW.STMARKS-SPOKANE.ORG

MISSION STATEMENT: To share the gospel through worship and service. To be an inclusive community for justice and peace among diverse peoples.

MESSENGER

Published monthly September - June by St. Mark's Lutheran Church.

Newsletter submissions due in the church office by the 15th of the month prior to publication.

Newsletter editor: Hulda Bridgeman
(509) 465-9591
hulda.bridgeman@gmail.com

FEBRUARY 2019

YOUTH NEWS

SAINT MARK'S LUTHERAN CHURCH

UPCOMING EVENTS...

Senior High

Questions about Youth Programs at St. Marks?
Call Susan Hagen
747-6677 Church
220-7250 Cell phone
Or Calvin Moore
844-6460 Cell phone
Or by email at
youth@stmarks-spokane.org

Last

WWL

February 27th

"For I know the plans I have for you," declares the Lord, "plans to prosper you and not harm you, plans to give you hope and a future."

Jeremiah 29:11



Save the Date for the
Summer Service Trip:
June 23rd - 28th

We are headed to Portland!



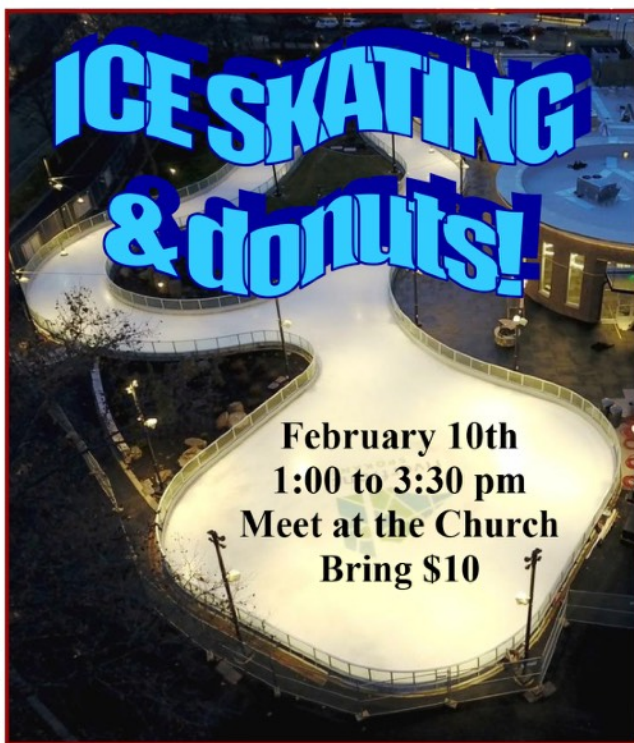
May Youth
Weekend
@ Holden
Village

May 24th-26th



ICE SKATING
& donuts!

February 10th
1:00 to 3:30 pm
Meet at the Church
Bring \$10



Senior High
Cafe Night

February 17th
7 to 9 pm
in the youth
room.
Snacks, Music,
Community

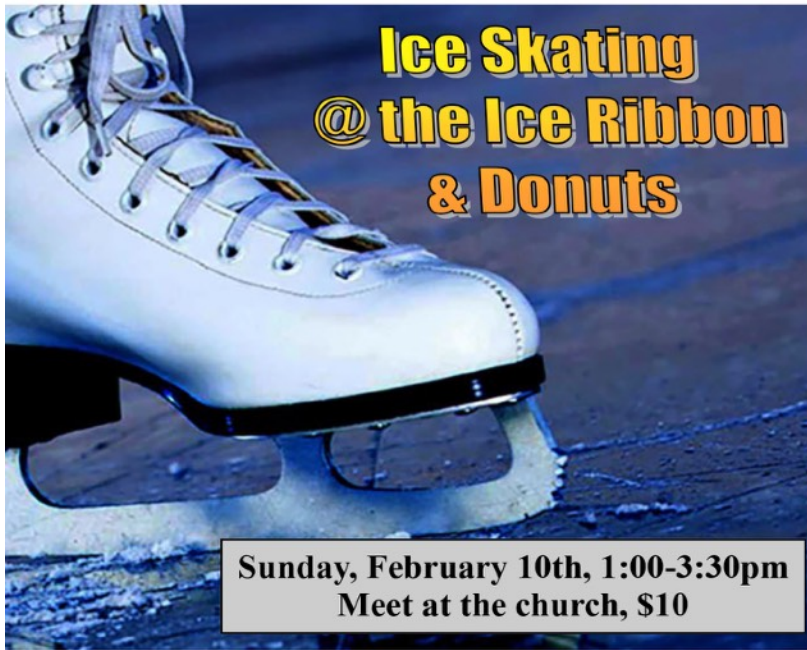


Calendar of Youth Events

February 2019

Sun	Mon	Tue	Wed	Thu	Fri	Sat
					1 Jr. High Lutherhaven Retreat	2 Jr. High Lutherhaven Retreat
3 Jr. High Lutherhaven Retreat No Sunday Cool	4	5	6 6:00 pm WWL/confirmation	7	8 Elementary Lutherhaven Retreat	9 Elementary Lutherhaven Retreat
10 Sunday Cool Jr. & Sr. Hi. Skating and Donuts 1-3:30pm	11	12	13 6:00 pm WWL/confirmation	14	15	16
17 Sunday Cool Sr. Hi. Café Night 7:00 - 9:00pm	18	19	20 6:00 pm WWL/confirmation	21	22	23
24 Sunday Cool Jr. Hi. Chiller 1-3pm	25	26	27 6:00 pm WWL/confirmation	28		

Junior High



**Ice Skating
@ the Ice Ribbon
& Donuts**

**Sunday, February 10th, 1:00-3:30pm
Meet at the church, \$10**

Board Games and PIZZA!

**1-3 pm
February 24th
Join us!**

