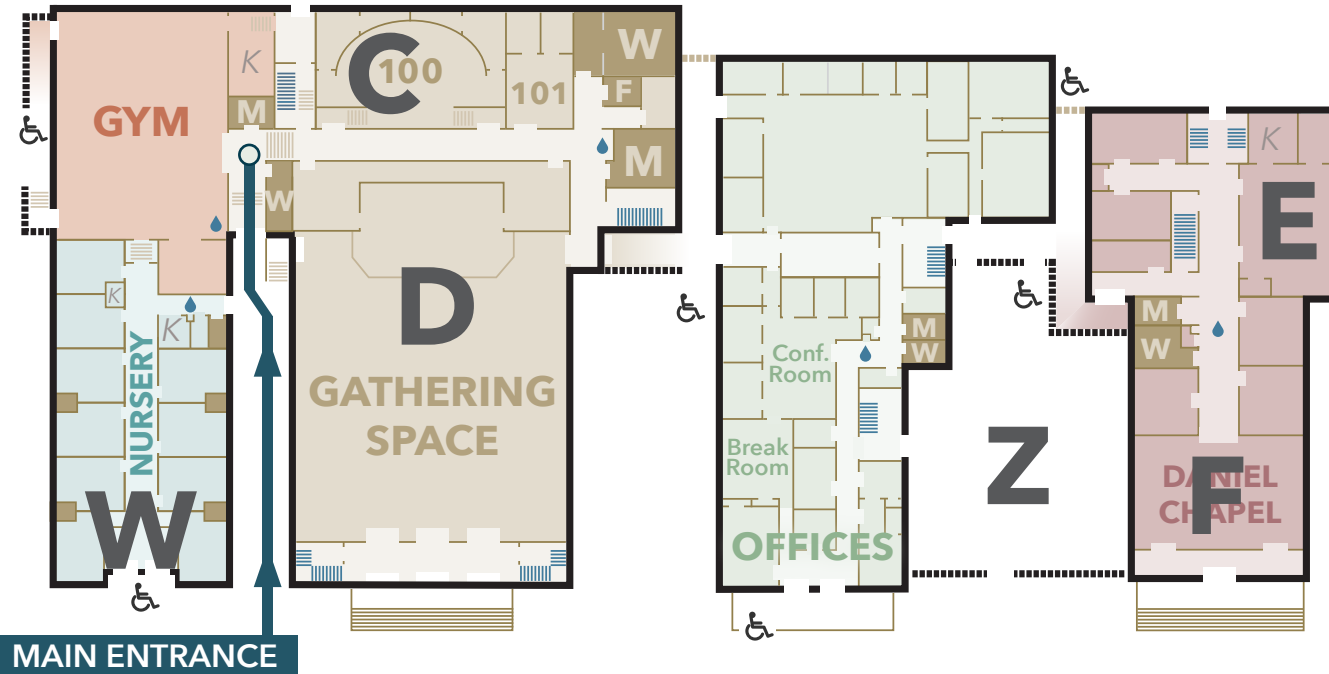


FALL
2023



WEDNESDAY SCHEDULE

Dinner in the Gym:
(by advanced registration only)
5:45pm-6:30pm

Study Groups:
6:30pm-8:00pm

GROUP LOCATIONS

- A:** Missions Reading
- B:** Discipleship Training
- C:** Men's Bible Study
- D:** Women's Bible Study
- E:** CREW Youth Group
(6th-12th grade)
- F:** Whole Bible Theology
- W:** Nursery | Jr. CrawfordKids
Check-in (1-5yo)
- X:** CrawfordKids Check-in
(1st-5th grade)
- Y:** CrawfordKids Rooms
- Z:** Youth Pick-up