



# Faith Journey

## Lutheran Church

Equipped with Faith • Connected in Love • Empowered for Service  
127 2nd Ave E, West Fargo, ND 58078 • 701.282.3309 • [faithjourney@growinfaith.org](mailto:faithjourney@growinfaith.org)

**April 21, 2024 • Fourth Sunday of Easter**

### Mission:

- To Equip with faith relevant for 21<sup>st</sup> Century Life
- To Connect in real and relevant Relationships
- To Empower to serve the world in Jesus' name

### REGULAR WORSHIP SCHEDULE

9am Sunday—Traditional  
11am Sunday—Contemporary

### FAITH FORMATION

10am Sunday—Launch  
*(Family Sunday School 4 yrs—Gr. 5)*  
7pm Wednesday—Compass  
*(Gr. 6-8 Confirmation)*

### Scheduling Meetings/Events

Contact Carly in the church office or Ginnie, [gberge@growinfaith.org](mailto:gberge@growinfaith.org) to schedule all events on the calendar.

### Bulletin Announcements and Announcement Slides

Deadline Monday, 4pm  
Send to: [gberge@growinfaith.org](mailto:gberge@growinfaith.org)

### Building Security Information

For the security and safety of everyone, the church building will remain locked except during worship services and scheduled activities. For admittance when locked, please ring the bell located above the mailbox to the right of the main entrance, the bell at the south entrance, or call the church office, 701.282.3309.

### Church Staff

#### The Rev. Steve Thompson

Intentional Interim Senior Pastor  
[sthompson@growinfaith.org](mailto:sthompson@growinfaith.org)

#### Carly Tufte, Parish Business Manager

[ctufte@growinfaith.org](mailto:ctufte@growinfaith.org)

#### Heather Reimer, Executive Asst. for Finance & HR

[hreimer@growinfaith.org](mailto:hreimer@growinfaith.org)

#### Jane Whaley, Creative Worship Coordinator

[jwhaley@growinfaith.org](mailto:jwhaley@growinfaith.org)

#### Jamie Thompson, Contemporary Worship Coordinator

**Welcome!**  
**We're glad you're here!**

### Always Room for One More

When Jesus says "I am" in the Gospel of John, he unlocks a new perspective on his love. In today's reading, when Jesus declares, "I am the good shepherd," we can imagine our Lord caring for us and guiding us. We picture ourselves as his sheep. It's reassuring to hear that we aren't alone to navigate the dangers and challenges of this world. We have a loving shepherd who is looking out for us.

Jesus loves us so much that he goes above and beyond the shepherd's role as a caretaker. He gives up his own life so our sins can be forgiven and we can receive eternal life. That's what being a good shepherd means—having such a close relationship with the sheep that the shepherd will stop at nothing to protect them. The shepherd will lay down his own life so his sheep can have life.

When we hear Jesus' promise to be our good shepherd, we must not miss his commitment to gather up the sheep that aren't yet part of his flock. They, too, will listen to Jesus' voice. Responding to his loving call, they will become part of the one flock that follows Jesus as their good shepherd, their Savior, and their Lord. No matter how many sheep are already jostling for space, there is always room for one more. Just like there is always room at our holy communion table for one more person to eat the bread, drink the wine, and receive the gifts of God's mercy and grace. We can always squeeze closer to the sheep around us to let one or more sheep enter Jesus' flock, thankful that the flock is growing and that we get to listen to the loving voice of our good shepherd, together.

*From sundaysandseasons.com Copyright © 2024 Augsburg Fortress. All rights reserved.*

### Today's Scripture Reading

Acts 4:5-12, p. 887  
Psalm 23, p. 435  
1 John 3:16-24, p. 990  
John 10:11-18, p. 872

### Next Week's Scripture Reading

Acts 8:26-40, p. 892  
Psalm 22:25-31, p. 435  
1 John 4:7-21, p. 991  
John 15:1-8, p. 878

**For more information: Website:** [www.growinfaith.org](http://www.growinfaith.org)

**Instagram:** [faithjourneyWF](https://www.instagram.com/faithjourneyWF)

**Facebook:** [www.facebook.com/faithjourneyWF](https://www.facebook.com/faithjourneyWF)

*All Sunday Services of Worship are live streamed to our Website, Facebook and BoxcastTV sites.  
Sunday 9:00am service on Cable Access at 11:45am on Ch 57 (Sparklight) and Ch 12 (Midco)*



**Welcome! We are so glad you chose to join us for worship today!**

Please complete a connection card, available from an usher, and drop it in the offering plate.

If you are new to Faith Journey, we invite you to take a moment and stop by our information desk for a special welcome gift. If you are interested in membership, please take a blue membership information form to complete and return to the church office so we can add you to our mailing list. Contact Carly in the church office with any questions at 701.282.3309 or ctufte@growinfaith.org.



**Keeping the Promises:  
3rd Grade Bible Class**  
**Saturday, April 27, 10:00am**  
**Fellowship Hall**  
Call the church office to register.

**3rd Grade Bible Blessing**  
**Sunday, April 28**



**Congregational Meeting**  
**Sunday, April 28**  
**12:15pm**  
(following 11am worship)  
**Worship Center**



**Bible Camp Registration**  
**REGISTRATION OPEN NOW!!**

Camp weeks for Genesis and Disciples at Red Willow Bible Camp—choose either:  
June 9-14 or July 28-August 2  
Genesis—Grades 5-6 / Disciples—Grades 7-9

**Register online at:**

<https://www.redwillowministries.com/>

For information, contact Carly in the church office, ctufte@growinfaith.org, 701.282.3309.



The Church Council is seeking congregation members willing to serve on Church Council. If interested, or for more information, please notify one of the council members or Carly

in the church office, ctufte@growinfaith.org, 701.282.3309.



**Church Council Seeks Volunteers to form a Stewardship Team**

The Church Council is seeking congregation members willing to serve on a Stewardship Team. If interested, or for more information, please contact Carly in the church office,

ctufte@growinfaith.org, 701.282.3309.

**Ways to Support Faith Journey:**

- ◆ **Online**—<https://growinfaith.org/giving> => click on **GIVE NOW** and follow the online instructions
- ◆ **On Your Phone**—Text "**FJLCgive**" to 77977 click on the link provided and follow the instructions
- ◆ **Use the SQUARE**—A system in our Narthex (lobby) for credit or debit card transactions
- ◆ **By Mail**—Send your gift to the church business office, 127 2<sup>nd</sup> Ave E, West Fargo, ND 58078 Attn: Carly
- ◆ **QR Code**—Use your smart phone camera to scan this QR code
- ◆ Drop in the mailbox to the right of the main (West) entrance



Contact Carly, Business Manager, 701.282.3309 or ctufte@growinfaith.org with questions.

*Thank You for your Generous Support!!*

**SUMMARY OF GIVING AND ATTENDANCE**

*Dates: April 8-15*

	<u>Last Week</u>	<u>Month to date</u>	<u>Prior year Week total</u>	<u>Prior year Month total</u>
Giving: \$	7,402*	\$20,209*	\$ 5,762	\$54,214*
Attend:	167	339	257	1551

\*Totals include Pushpay

\*\* \$13,420 is needed weekly in order to make budget

**Community Impact Special Offerings**

*You may use the white pew envelopes or QR code.*

**Care and Share Offerings** for the month of April are designated to **Furniture Mission of the Red River Valley**. Furniture Mission of the Red River Valley is a faith based non-profit that accepts gently used furniture to regift to local families in crisis or challenge.

*Care and Share offering may be placed in the offering plate on the stand in the center aisle as you go to communion.*

**Noisy Offering** is dedicated to help Saigoni Ally, Veronica Samson Samsoni and Gibson Flaviana Fransisco, the three children in Tanzania we support through World Vision. Drop in your spare change—"noisy offering". Checks and currency are also gratefully appreciated.

*Containers for Noisy Offering are located at the two side entrances in the back of the Worship Center.*



When considering your personal investment plans, please consider the Faith Foundation. While supporting ministries such as Faith Journey Lutheran Church, the Faith Foundation offers individuals the ability to leave a legacy to our church for generations to come. If you would like more information, please contact the church office at 701.282.3309. They will contact one of the Foundation Trustees to visit with you.

**Grief Share**  
**Thursdays, 6:30-8:30pm**  
*(through July 11)*  
**Conference Room (lower level)**



GriefShare is a friendly, caring group of people who will walk alongside you through one of life's most difficult experiences. You don't have to go through the grieving process alone.

For more information, please contact Bonnie Swanson, 701.318.0949, or Darcy Kranda, 701.552.3881.



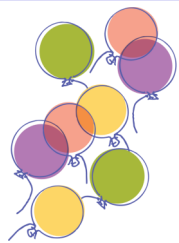
**Intro to Compass for  
 5th Graders and Parents**  
**Wednesday, April 24, 7pm**  
**Worship Center**

Registration forms for the Compass 2024-2025 program year are available at the information desk.



**Intro to Launch Family  
 Sunday School**  
**Pre/K Kids and Parents**  
**Sunday, May 5, 10am**  
**Fellowship Hall**

Registration forms for the Launch 2024-2025 program year are available at the information desk.



**Launch and Compass Year-End Party**  
**Wed, May 8, 6-8pm, Thunder Road**  
 All Launch and Compass participants and families are invited to join us for two free hours of fun. . .unlimited mini golf, batting cages, go-carts, bumper cars and laser tag!  
 Arcade and food will be on your own.

**Email Heather by Wed, May 1, with number of family members attending. hreimer@growinfaith.org**



**Vacation Bible School**  
**Preschool through Grade 5**  
**July 15-18, 1-4pm**  
**Sponsored by Faith Foundation**  
 No charge to attend, but registration is required.  
 Information on registration will be available at a later date.



What is a healthy weight for you? Healthy weight is the weight at which you feel good about yourself, have energy for work and play, and lowers your risk for health problems. Talk with your health care provider about setting the best weight program for you.

**Memory Café**—For people with mild to moderate memory loss and their care partners. Events 1:00-2:30pm unless indicated otherwise. Information: 701.281.9303.

- **Apr 24**—Caregiver Café, Call 701.404.6712 for details, 1122 1st Ave N, Fargo

## Remembering in our Prayers

### Sympathies

None

*We apologize for any omissions.  
 Please send corrections to gberge@growinfaith.org  
 or call the church office. Thank you.*

### Prayer Concerns

Gratitude to God for His grace and mercy  
 Our congregation, as we continue in mission and ministry, loving and serving one another and the world  
 Our congregation and leaders will be led by the Holy Spirit as we plan for the future  
 Our faith formation students, families and leaders  
 Our faithful volunteers in all areas of ministry  
 Those who need God's healing touch  
 Those mourning the loss of a loved one  
 People in long term care facilities or homebound  
 Those struggling with addictions  
 The many hungry and homeless, locally and globally  
 For leaders and influencers, that working for the well-being of all will be their highest goal  
 Those serving in the military and their families  
 Law enforcement, first responders and their families  
 Those around the world in the presence of war and violence, that they may experience peace  
 The children we support in Tanzania—Saigoni Ally, Veronica Samson Samsoni, Gibson Flaviana Fransisco  
 Our Companion Synod and its ministries in Central African Republic

*We always thank  
 GOD for all of you  
 and continually  
 mention you in  
 our prayers.*

1 Thessalonians 12, NIV



If you would like to join the Faith Journey prayer chain, please contact Pastor Steve, sthompson@growinfaith.org, 701.282.3309

### Venture Prayer

*Lord God, you have called your servants to ventures of which we cannot see the ending, by paths as yet untrdden, through perils unknown. Give us faith to go out with good courage, not knowing where we go, but only that your hand is leading us and your love supporting us; through Jesus Christ our Lord. Amen.*

April 2024						
S	M	T	W	T	F	S
	1	2	3	4	5	6
7	8	9	10	11	12	13
14	15	16	17	18	19	20
21	22	23	24	25	26	27
28	29	30				

## Faith Journey Calendar

April 21-28, 2024

Check our online calendar for changes and additions at [www.growinfaith.org](http://www.growinfaith.org)

\*For info about AA or AlAnon call 701.235.SEEK (7335)

### SUN, April 21—Fourth Sunday of Easter

- 9:00** Worship with Holy Communion, Worship Center  
 10:00 Launch Family Sunday School, Fellowship Hall  
 10:00 Community Impact Team Meeting, Conference Room  
**11:00** Worship with Holy Communion, Worship Center  
 6:00 Boy Scout Troop #232, Fellowship Hall

### MON, April 22—Earth Day

- 5:00 Bio Girls, Fellowship Hall and Narthex  
 6:30 Boy Scout Troop #213, Fellowship Hall (W 1/2)  
 8:00 AA, Fellowship Hall (E 1/2)

### TUE, April 23

- 5:15 Volunteers at Churches United—Micah’s Mission  
 6:00 Faith Journey/Community Presbyterian Bell Choir, Community Presbyterian Church, Sheyenne St/7th Ave  
 6:30 Choir Practice, Worship Center  
 6:30 Cub Scout Pack #232, Fellowship Hall/Rooms 107/109

### WED, April 24—Administrative Professionals Day

- 9:00 Piecemakers, Fellowship Hall  
 7:00 Compass, Worship Center  
 7:00 Compass Preview Night for 5th Graders, Worship Ctr.

### THU, April 25

- 7:00 Kings Men Breakfast Meeting, Deaner’s Diner  
 6:30 GriefShare, Conference Room

### FRI, April 26

Church Office Closed

### SAT, April 27

- 10:00 Faith Milestone—3rd Gr. Bible Class, Fellowship Hall

### SUN, April 28—Fifth Sunday of Easter

3rd Grade Bible Blessing

- 9:00** Worship with Holy Communion, Worship Center  
 10:00 Launch Family Sunday School, Fellowship Hall  
**11:00** Worship with Holy Communion, Worship Center  
 12:15 Congregational Meeting, Worship Center  
 6:00 Boy Scout Troop #232, Fellowship Hall



## Worship Assistants

### 9:00 Worship

- Ushers:** Melody Larson  
 Willie Schacher  
**Greeters:** Paula Kaufman  
 Doris Rost  
**Communion Assistant:** Doris Rost  
 Sharon Schacher  
**Cantor:** Tom Whaley

### 11:00 Worship

- Ushers:** Greg and Betty Hanson  
 Rod and Gail Schober  
**Greeters:** Judy Dallmann  
 Britni Wyum  
**Communion Assistants:** Linda Lyman  
 Bonnie Swanson  
**Worship Lead:** Lynda Hammer



**Micah’s Mission—Churches United for the Homeless**  
 Faith Journey is committed to serving a meal the **4th Tuesday** of each month at Micah’s Mission Family Shelter. For details on volunteering, please contact Britni Wyum, [britnicleclair@yahoo.com](mailto:britnicleclair@yahoo.com).

### Food Pantry Needs - Non-perishable food only

Peanut butter, canned tuna, canned chicken, canned fruit and vegetables, soup, pasta, rice, instant potatoes, boxed meals, baking items, spices, soap, toothpaste and toothbrushes, soap, diapers

Place donations in Food Pantry box by elevator.

### YWCA Shelter—Most Urgent Needs:

Adult and Children Shampoo/Conditioner/Body Wash, Non-perishable food items, Enfamil Infant Formula (any kind), Kids Boots (all sizes) High School Age Backpacks, School Supplies  
 Additional items listed at YWCA donation box in Narthex or visit [www.ywcacassclay.org](http://www.ywcacassclay.org)

Place donations in YWCA box by church office.

If you, or someone you know, is in crisis or contemplating suicide, call the 988 hot line. It is free and available 24/7.

**Wi-Fi Guest**—User ID: Faith-Guest  
 Password: FaithJourney