

The woman also gave some of the fruit to her husband, and he ate it. Then God came into the garden. When God discovered the serpent had misled the woman and the man, He punished the animal. What did God say?

Unscramble the missing words to find out.



“Because you have _____ this, _____
 eodn _____ suerdc
 are you _____ all the livestock and all the
 beova
 _____ ! You will _____
 wldi _____ manaisl _____ lrawc
 on your _____ and you will eat _____ all
 lyelb _____ tusd
 the _____ of your _____.”
 ysad _____ flei



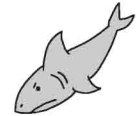
What did God do to Adam and Eve?

He _____ them _____ of the _____.
 estn _____ uto _____ enragd

Adam and Eve Disobey God

A crafty animal came to tempt Adam and Eve.
 What kind of animal was it?

Write the names of the pictures, then write the letters from the boxes on the lines below.



Answer: _____

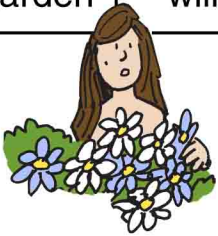


**Wauwatosa
 Presbyterian Church**

The serpent said, "Did God really say,
'You must not eat from any tree in the garden?'"
What did the woman tell the serpent?

Working left to right, first write all of the 1's.
Then write all the 2's. Continue with the 3's, then the 4's.

1 We	2 garden	3 that	4 you	1 may	2 You
3 is	4 must	1 eat	2 must	3 in	4 not
1 fruit	2 not	3 the	4 touch	1 from	2 eat
3 middle	4 it	1 the	2 fruit	3 of	4 or
1 trees	2 from	3 the	4 you	1 in	2 the
3 garden	4 will	1 the	2 tree	3 and	4 die



The woman said,

" _____ "

_____,

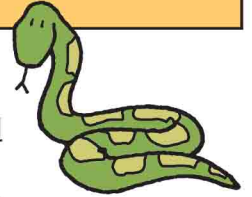
but God did say, ' _____ '

_____,

_____, _____ ."

But the serpent lied to the woman.
The serpent said, "You will not surely die."

Read what happened next, then find the underlined words below.
They are **↑ ↓ → ↘ ↙ ↗**.



When the woman saw that the fruit of
the tree was good for food and pleasing
to the eye, and also desirable for
gaining wisdom, she took some and ate it.

L	L	K	C	H	J	D	C	N	D	T	K	L	E	Y	E	R	T
F	B	H	D	Y	B	W	A	K	V	K	M	Q	U	O	I	N	S
M	E	L	I	J	Z	I	B	S	H	C	M	P	C	B	H	D	H
G	W	D	J	Z	S	E	R	J	D	I	G	A	N	F	O	G	U
N	K	R	O	Q	Q	H	D	A	M	E	H	L	E	J	G	K	F
H	N	Y	P	O	N	B	P	A	U	W	I	B	F	K	J	A	L
O	K	M	I	O	F	V	Z	O	N	B	I	M	P	I	P	D	F
L	B	A	G	R	A	O	D	I	N	V	T	S	E	C	C	W	B
C	K	R	T	D	I	L	F	W	L	M	C	L	D	K	V	H	V
P	O	E	B	Q	S	C	P	O	L	W	B	D	K	O	C	E	K
G	J	P	F	R	K	H	S	M	I	H	C	O	U	J	M	Y	B
Q	I	D	D	C	W	A	Y	A	G	K	E	P	E	A	O	Z	B
S	H	Q	E	A	D	L	U	N	T	C	J	L	Q	N	Z	K	A
R	R	E	S	G	Z	V	G	S	J	R	G	H	I	A	M	D	B
G	A	U	I	N	P	B	P	F	N	G	H	Q	S	T	A	A	H
S	Z	Y	R	K	H	F	A	O	J	G	T	R	H	V	H	Y	Z
F	M	E	A	C	Q	L	K	F	G	C	A	I	A	J	W	C	G
K	L	J	B	V	W	K	Y	A	E	M	I	Z	U	B	V	K	N
T	W	V	L	V	D	A	I	D	H	G	K	H	G	R	D	E	I
H	A	E	E	C	F	W	C	W	K	P	F	L	T	F	F	D	S
B	A	L	Q	Z	Y	A	L	G	C	S	B	Q	C	C	C	U	A
F	B	E	I	B	L	V	J	R	J	I	V	A	R	G	S	B	E
S	L	R	Q	K	E	P	O	T	N	K	E	A	H	T	F	E	L
W	D	C	O	P	O	L	L	R	J	I	K	M	L	K	I	K	P
F	V	O	C	Z	D	K	C	E	D	K	O	L	J	D	J	F	I
Y	T	T	R	B	G	N	Y	E	K	E	C	V	A	T	E	U	L
T	B	U	J	A	M	A	K	I	N	G	A	F	M	G	H	V	D
Z	U	B	L	A	O	H	L	K	K	J	J	E	A	H	G	W	G
C	S	G	P	S	Q	C	H	M	B	J	F	I	I	N	O	K	B