

You're Gonna Be Ok

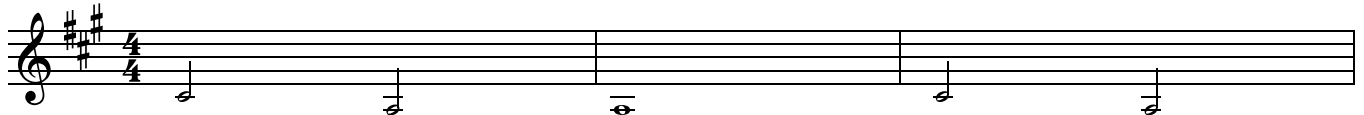
(based on the recording by Jenn Johnson)

Words and Music by
Jenn Johnson, Seth Mosley
and Jeremy Riddle

♩=66

INTRO

F#m D A F#m D



VERSE

4 A F#m D



1. I know it's all you've got to just be strong, —
(2. I know your heart is heav - y) from those nights, —

6 A F#m D



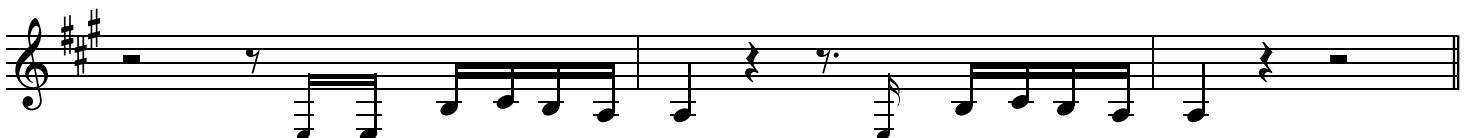
and it's a fight just to keep it to - geth - er, to - geth - er.
but just re - mem - ber that you are a fight - er, a fight - er.

8 A F#m D



I know you think that you are too far gone, —
You nev - er know just what to - mor - row holds, —

10 A F#m D A



but hope is nev - er lost, hope is nev - er lost.
and you're strong - er than you know, you're strong - er than you know.

CCLI Song # 7072275

© 2016 CentricSongs | These Tunes Go To 11 | Bethel Music Publishing
For use solely with the SongSelect®. Terms of Use. All rights reserved. www.ccli.com
CCLI License # 461507

PRE-CHORUS

13 Bm A E Bm A

Hold on, don't let go. Hold on, don't let go.

CHORUS

16 E D E F#m A

Just take one step closer, put one foot in front of the other.

19 D E 1. F#m A A/C#

You'll get through this; just follow the light in the darkness.

21 D E F#m D A

You're gon-na be o - k. I know your heart is heav-y

24 2. F#m A A/C# 3. F#m A A/C#

just fol - low the light in the dark - ness. just fol - low the light in the dark - ness.

INSTRUMENTAL

26 D E D E D

You're gon-na be o - k.

BRIDGE

30 E D A

When _ the night ___ is clos - ing in, don't _ give up _

32 D A D A

_ and don't _ give in. This _ won't last, _ it's not _ the end, it's not _ the end.

34 1. D F#m A 2. D A

You're gon-na be o - k. When _ the night You're gon-na be o - k.