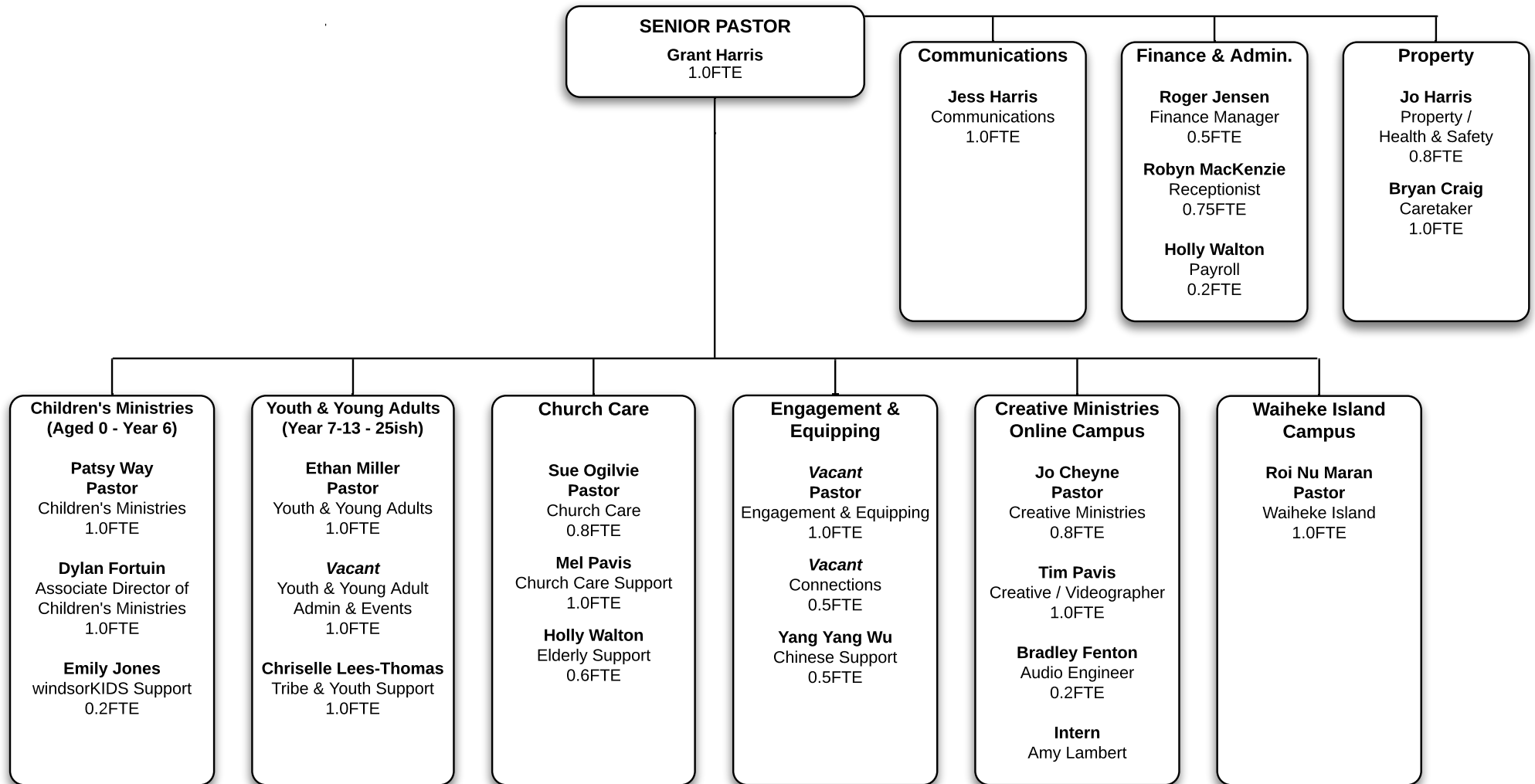


Windsor Park Baptist Church (September 2020)

Governed by Elders
... elected by members at AGM



Total Staff: 22

FTE: 17.85

**Windsor Park Group
Organisational Structure
(September 2020)**

Windsor Park Baptist Church

Governed by Elders
... elected by members at AGM

Chair: Iain Bradley

Senior Pastor: Grant Harris

windsorKIDS
windsorYOUTH
Church Care
Creative Ministries
Engagement & Equipping
Waiheke Island Campus
Online Campus
Beyond the Walls
Community Ministries

Total Staff: 22

Total FTE: 17.85

Equip Trust

Governed by Trustees
... elected by Elders
ratified by members at AGM

Chair: Roz Sorenson

CEO: Naomi Cowan

CSW Contracts
Totara Club
Koromiko House
Transitional Housing
Psychological Therapies
Dietitian Services
Housing Co-ordination
Family/Whanau support
Employment Support
Spirituality Support

Bays Youth:
Youth Mentoring
Alternative Education
Groups in Schools

Total Staff: 78

Total FTE: 62.2

Windsor Park Hub Limited

Governed by Directors
... elected by Elders
ratified by members at AGM

Chair: Mike Mackay

GM: Shelley Thornton

Small Fries
Christian Childcare Centres:
Mairangi Bay | Beachlands

WindsorCreative
Windsor Funerals

Total Staff: 60

Total FTE: 37.4

Windsor Park LifeCare Trust

Governed by Trustees
... elected by Elders
ratified by members at AGM

Chair: Peter Davidson

Manager: Sue Ogilvie

CAP Debt Centre
Haven Pregnancy Support
WP Christian Counselling Centre
PowerUp / Refresh
Family Law Clinic
24/7 Youth Work

Total Staff: 7

Total FTE: 2.5