



What's New

GPS Family the season of fall is here at GPS. On September 14 we will kick back into the educational year here with Sunday school, confirmation and youth programming beginning again. Sunday school is held every week starting at 9:15. Also as the school year begins a big thank you to all who donated snacks for Harlem High School as they began back. It was a joy to drop off all of those gifts of love that will bless the students in our community. We also look forward to a Sunday of worship and fellowship outdoors on September 28. Worship will be a half an hour later; starting at 10 and a picnic lunch will follow. We will also have outdoor activities and more to round out the day. The month of September is always a good one as we begin the season of fall and all that comes with it.

Pastors Message

GPS Family (God's People Serving),

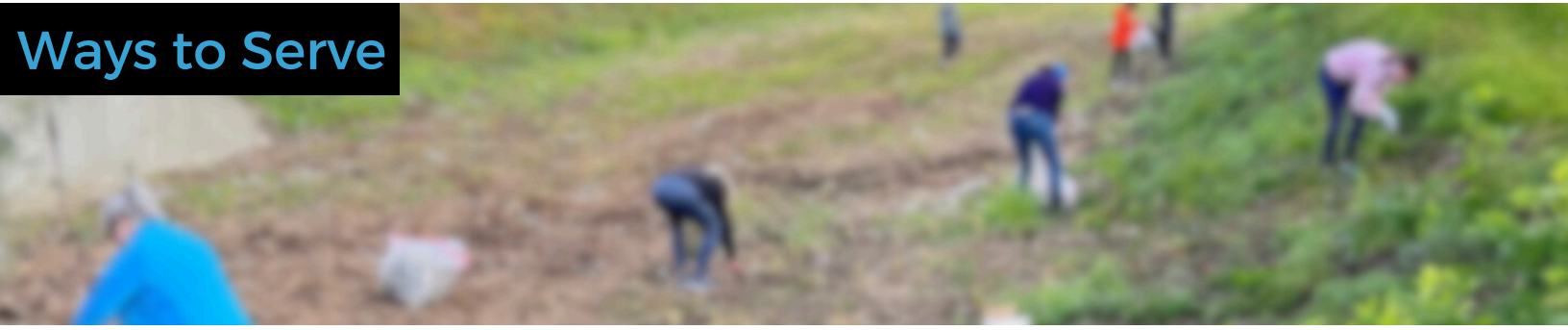
Our culture is marked by progress, achievements, quick results and a frenetic pace. If we allow it to we can find ourselves overwhelmed by the pace and rhythm that asks more of us than we can manage. In fact it asks more of us than we were created to give. Over the past few weeks we have spent time learning about Sabbath Rest and what it can mean to our everyday lives. How can we rest in a restless world; how can we find ourselves carefree in the care of God? Jesus offers an invitation that speaks directly to this concern when he says, 'Are you tired? Worn out? Burned out? Come to me' (Matthew 11:28). In this invitation Jesus invite us into a new way of being and doing in our world. Jesus in the face of our culture gives us all we could ask for; rest, grace and life. This is the crux of the gospel and central to the way of life Jesus has offered. How might you learn to live in this rest so that others might be drawn into it as well?

In God's Love,

Pastor Brandon Nelson

*"I'll show you how to take a
real rest. Walk with me and
work with me--watch how I do
it"*

(Matthew 11:29)



OUR COMMUNITY

Senior Center: The Senior Center at GPS meets every week on Tuesday's. They would love for you to join them for some games and time together. It is a great way to connect with others and have some fun. They meet every Tuesday from 10 am -2 pm.

Serving Opportunity: The neighborhood bordering GPS is in need of some yard/house work. From time to time we will get small jobs that need doing like weed pulling, house painting, small handy jobs and more. If available and/or interested please email info@gpsfaith.com or fill out the online form [HERE](#)

OUR CHURCH

So Long Summer: Join us after service Sunday September 7 for some ice-cream and fellowship as we say goodbye to summer.

Sunday School: We kick back in with fall education here at GPS on September 14. Sunday school begins at 9:15, confirmation follows directly after service on the first and third Sundays and Youth group meets the last Sunday of every month right after service as well. Please fill out the GPS form [HERE](#) so we have the needed information.

Outdoor : Join us September, 28 at 10:00 am for outdoor worship(in our parking lot) and a picnic right after. We'd love to have you join us and if you'd like to provide juice boxes, chips or a desert fill out the form [HERE](#).

July Giving Numbers

Expenses: \$21,954 Giving: \$33,354

Year to date Giving: \$145,595 Expenses:\$148,894

Ways to Connect

SMALL GROUPS & BOOK STUDY GROUPS

(HERE ARE OUR GROUPS THAT ARE CURRENTLY MEETING)

Wednesday Morning: Are you interested in digging deeper into the Sunday reading before we get to Sunday? This group meets weekly at 10:00 am on Wednesday to go through the readings for Sunday spending time digging deeper into God's word. If interested send an email to pastorbrandon@gpsfaith.com

Faithful Readers Book Club: Interested in joining? email info@gpsfaith.com

Water Walkers: Currently meeting at GPS after Sunday service. Interested email info@gpsfaith.com

GPS Families: Are you a family here at GPS or know of a family that is longing for connection? We have a group of families where they take time connecting through a meal, having fun with each other and activities. Children are welcome. Interested? Please email Pastor Brandon at pastorbrandon@gpsfaith.com

How to contact us...

GPS STAFF and LEADERSHIP:

Brandon Nelson, Pastor,
pastorbrandon@gpsfaith.com

Aaron Hill, Worship Leader,
aaron@gpsfaith.com

Makayla Robertson, Media/ Tech
media@gpsfaith.com

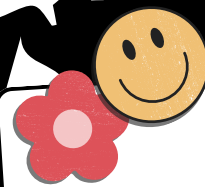
Financial Secretary: info@gpsfaith.com

Prayer: In need of prayer please email us at prayer@gpsfaith.com or call us at the church office and leave a message at (779) 221-8491

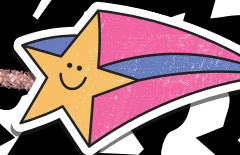
Hospitalized: If you are in the hospital and would like to be on our prayer chain or have a pastoral visit, please call the church office at (779) 221-8491. Also, please notify the hospital of your affiliation with GPS Faith Community when you check in.

Worship Every Sunday
Online and In-Person at 9:30 am.

Church Email: info@gpsfaith.com
Visit us on the web: www.GPSFaith.com
Visit us on Facebook: www.facebook.com/gpsfaith



GPS Faith YOUTH & KIDS



Coming Up

On September 14 we will start back to Sunday school and confirmation. Sunday school begins at 9:15, confirmation follows directly after service on the first and third Sundays and Youth group meets the last Sunday of every month right after service as well. Please fill out the GPS form [HERE](#) so we have the needed information.

Sunday School (Pre-K-5th grade)

Sunday School will start back in on September 14 and we are excited to be back to our educational year at GPS.

Upcoming dates

September 14 first day back

September 28 No Sunday School

Upcoming dates

September 21 first class back

Upcoming dates

Pathwayz (6th grade-8th grade)

Confirmation is a 3 year program of faith formation at GPS. We meet directly after service on the 2nd and 4th Sunday of every month. If your student is entering 6th grade next school year check in about the upcoming year.

Compass (High School) Youth

At GPS we love growing in our faith together. This is a lifelong process and is important at every age. We will gather on the Last Sunday of every month directly after worship.