

**Pentecost  
Sunday  
June 04, 2017**



**Weekly  
Messenger**

## **POP Community News!**

***Welcome Pastor Mary Louise Frenchman! Pastor Mary Louise is the Native America Ministry Liason for the Grand Canyon Synod of the ELCA. We are very happy to have her preaching for us today - welcome!***

### **Vacation Bible School at POP-Starts Tomorrow!**

**Registration is closed- VBS is full!** MAKER FUN FACTORY: Created by God, built for a Purpose!

### **Fellowship Hour at POP!**

After worship Fellowship has officially run out of goodies and hosts for the summer! The sign-up sheets are in Gangsei by the beverage station, or you may talk to Jan Beebe or Martha Weld for details!

### **Healing Prayers Around the Altar-June 11 and June 25.**

Are you suffering in mind or spirit? Is someone in your life facing a difficult situation or challenge? Prince of Peace offers healing prayer at the altar directly following the worship services on June 11 and 25th. We believe God brings healing to all who seek it.

### **Congratulations Graduates!**

- David Rowe graduated from Chaparral HS and will be attending ASU (WP Carey School of Business)
- Elliott Allison graduated from Arcadia HS and will be attending ASU
- Sydney Hartman graduated from Arizona School for the Arts and will be attending Boston University
- Caitlin Hartman graduated from Arizona School for the Arts and will be attending The George Washington University

We also want to celebrate some of our wonderful preschool aides who are graduating this year...  
Abby, Caitlyn, Randy, and Bri! **Congrats to all!**

### **YOGA at POP (Every Body Matters)-June 14 at 5:30 pm.**

This is a fitness class for mind, body and faith! All are welcome! We will have a yoga session and time for devotions. We will meet the following Wednesdays at 5:30pm 6/14, 6/28, 7/12, 7/26, 8/9, & 8/23 in Room 17. Please contact Dena or Greg Rowland or the church office for more information.

### **After the Boxes are Unpacked- Coming This Fall!**

Christ centered study designed for women who are uprooted by a move or other life change. Through Biblical teaching and personal support this study prepares, encourages and equips a woman to let go of the past, rebuild hope, and embrace her new life. Invite someone who has just moved here. Begins August 22<sup>nd</sup>, 9:30 a.m.- 11:30 a.m. Contact Janet DeJonge (janlde76@gmail.com, 763.513.7243) or Nancy Stevens (nancy.stevens@cox.net, 602.418.6963).

***Wednesday Bible Study and Theology Pub will resume in September 2017***

***THANK YOU! To Pastor Rick, Steve Edgar and Ruben Lara for serving as adult mentors on our Navajo Lutheran Mission Trip last weekend!***

## **This week at Prince of Peace**

### **Sunday, June 4**

9:00 a.m. Nursery  
9:30 a.m. Worship, Sanctuary

### **Monday, June 5**

9:00 a.m. Vacation Bible School Starts  
6:00 p.m. Women's Bible Study, Choir R

### **Tuesday, June 6**

9:00 a.m. Vacation Bible School  
9:00 a.m. Firm Believers exercise, R 12  
10:00 a.m. Library Meeting  
1:00 p.m. Knitting Group

### **Wednesday, June 7**

9:00 a.m. Vacation Bible School

### **Thursday, June 8**

9:00 a.m. Vacation Bible School

### **Friday, June 9**

9:00 a.m. Vacation Bible School

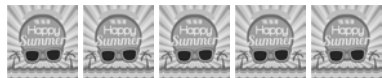
### **Saturday, June 10**

9:00 a.m. Quilters, R 14

### **Sunday, June 11**

*ROOTED Las Vegas- Youth*

9:00 a.m. Nursery  
9:30 a.m. Worship, Sanctuary



## **Assisting in Worship**

<b>Altar Guild</b>	Nancy Hawthorne	
<b>Lector</b>	Gail Andrews	
<b>Ushers</b>	Ruth Stone	Kay McCartney
	Bill Dobson	
<b>Greeters</b>	Verne and Ellen Schoeneman	
<b>Communion Servers</b>	Kay McCartney	Audrey Cox
<b>Youth Worship Leader</b>		

*The flowers on the altar are given by Lois Godward.  
"Celebrating the birthday of Bill Godward, who  
would have been 98 years of age today. Spouse Lois,  
daughters Lynne McGinley and Pamela Evans.*

*2017 Flower Chart is in the narthex: sign up for your special  
dates! Fill out the form, attach the payment, send it to the  
church office or drop it in the offering plate.*

## **Partnering in Prayer**

Karen Johnson	Frank Morris	Andrew Farrer
Jan Lecker	Kathy Kaiser	Karen & Russ Osborn
Steve Traaen	Trish Traaen	Robert Duckworth
Brooke Brown	Beverly Ollila	Kim Medina

## **Welcome To Prince of Peace**

**Worship at Prince of Peace**, an ELCA Lutheran congregation, is a time for each of us, gathered in community, to meet our living Lord Jesus. We extend an invitation to all who believe in Jesus Christ to commune when we celebrate Holy Communion. If you are **searching for a church home**, please know you are welcome at Prince of Peace. Return, let's worship together often.

- ❖ **Children are always welcome in worship.** Activity bags are available for young worshippers at the center entrance to the sanctuary. If you are in need of assistance for children through the age of three, a staffed nursery is available from 9:15 a.m. to 10:30 a.m. in Room 16 in the Education Building.
- ❖ **Sunday School** for children age 4- 6<sup>th</sup> grades is available every Sunday at 9:30 a.m. during the school year.
- ❖ **6-12th Grade Youth and Families** -- Grow in faith and in community through fun, fellowship, service, and more! For a full schedule, visit our website or see Audrey Cox.
- ❖ **Communion Needs:** Gluten-free bread and grape juice are available. If you desire to receive communion in the pew, please notify an usher.
- ❖ **Prayer Requests:** Please write down your concern and place it in the offering plate or prayer box and indicate if the name can be published in this newsletter or just shared with our prayer warriors through the Prayer Chain.
- ❖ **Hospital Calls:** Please call Pastor Rick directly at 408.472.0529 or contact the church office to let us know if you or a family member is hospitalized or for a pastoral visit during rehab in a care center or at home.
- ❖ **Pastoral Care:** If you are seeking help with baptisms, weddings, memorial services or seek pastoral counseling, please contact Pastor Rick Sherrill at 408.472.0529 or the church office directly.
- ❖ **Pastor Office Hours: By appointment.** Pastor Rick, cell: 408.472.0529, email: [pastorrick@popphoenix.org](mailto:pastorrick@popphoenix.org).

**Tuesday's 10:00-Noon and Thursdays, 1:00 p.m.-3:00 p.m.**

- ❖ **Monthly Newsletter:** To receive your monthly newsletter by e-mail, go online to [www.popphoenix.org](http://www.popphoenix.org) and sign up by going to the Current Happenings tab, then the Monthly Newsletters tab, or call the church office for help.
- ❖ **Church Office Hours:** Monday through Thursday, 9 a.m. to 4 p.m. Church Office: 480.945.9537.
- ❖ **Connect with us: Web:** [www.popphoenix.org](http://www.popphoenix.org) **Instagram:** Pop\_Youth **Facebook:** Facebook.com/popphoenixaz  
**Call:** 480.945.9537 **Email:** [office@popphoenix.org](mailto:office@popphoenix.org) **Visit:** 3641 N. 56<sup>th</sup> Street, Phoenix, AZ 85018

**First Sunday  
after Pentecost  
June 11, 2017**



**Weekly  
Messenger**

## **POP Community News!**

### **Healing Prayers Around Today and June 25.**

Are you suffering in mind or spirit? Is someone in your life facing a difficult situation or challenge? Prince of Peace offers healing prayer at the altar directly following the worship services today and June 25th. We believe God brings healing to all who seek it.

### **Where are the PoP Youth Today?**

June 11-17 the following Youth and Adult Mentors will be participating in the Partner Synod Youth Gathering (Las Vegas, Grand Canyon, Phoenix, and Tucson). Please keep us in your prayers. Samantha Ayala, Lauren Pineda, Madison Sherrill, Kevin Wooden, Makayla Zubal, Kedrick Gahm, Mariana Gomez-Acosta, and Audrey Cox.

***Next Church Council Meeting is Tuesday, June 13 at 6pm in the Choir Room.***

### **YOGA at POP (Every Body Matters)-June 14 at 5:30 pm.**

This is a fitness class for mind, body and faith! All are welcome! We will have a yoga session and time for devotions. We will meet the following Wednesdays at 5:30pm 6/14, 6/28, 7/12, 7/26, 8/9, & 8/23 in Room 17. Please contact Dena or Greg Rowland or the church office for more information.

### **Special Father's Day Worship- Sunday, June 18th.**

Join us for a special worship service honoring the fathers in our lives. We will serve root beer floats after the worship service!

### **POW!...Potluck On Wednesday-June 21st!**

Our schedules have slowed down and the temperatures are heating up. What a perfect opportunity to join friends for a mid-week potluck and video. Bring the family because child care is being provided! Mark your calendars for Wednesday, June 21st. 6:30 p.m. in Rooms 11 and 12. Bring a dish to share and a beverage. We will be watching the video "I Love to Live and I Love to Laugh" by Dennis Swanberg, a funny, uplifting and evangelistic video. Questions? See Dena Welch-Rowland or call her at 480-220-0396.

### **After the Boxes are Unpacked- Coming This Fall!**

Christ centered study designed for women who are uprooted by a move or other life change. Through Biblical teaching and personal support this study prepares, encourages and equips a woman to let go of the past, rebuild hope, and embrace her new life. Invite someone who has just moved here. Begins August 22<sup>nd</sup>, 9:30 a.m- 11:30 a.m. Contact Janet DeJonge (janlde76@gmail.com, 763.513.7243) or Nancy Stevens (nancy.stevens@cox.net, 602.418.6963).

### **Fellowship Hour at POP!**

After worship Fellowship is running low of goodies and is in need of hosts for the summer! The sign-up sheets are in Gangsei by the beverage station, or you may talk to Jan Beebe or Martha Weld for details!

***Wednesday Bible Study and Theology Pub will resume in September 2017***

## ***This week at Prince of Peace***

### **Sunday, June 11**

*ROOTED Las Vegas- Youth*

9:00 a.m. Nursery

9:30 a.m. Worship, Sanctuary

### **Monday, June 12**

*ROOTED Las Vegas- Youth*

7:00 p.m. Grant's Partners, R 14

### **Tuesday, June 13**

*ROOTED GC, Sedona- Youth*

10:00 a.m. Library Meeting

1:00 p.m. Knitting Group

6:00 p.m. Church Council Meeting, Choir R

### **Wednesday, June 14**

*ROOTED Phoenix- Youth*

11:30 a.m. Elderberries at U.S. Egg

5:30 p.m. Everybody Matters Yoga, R 17

### **Thursday, June 15**

*ROOTED Tucson- Youth*

### **Friday, June 16**

*ROOTED Phoenix WnW- Youth*

### **Saturday, June 17**

*ROOTED Phoenix- Youth*

9:00 a.m. Quilters, R 14

### **Sunday, June 18-Father's Day**

9:00 a.m. Nursery

9:30 a.m. Worship, Sanctuary

## **Assisting in Worship**

<b>Altar Guild</b>	Tracy Fish-Doody	Nancy Hawthorne
<b>Lector</b>	Ron Swanson	
<b>Ushers</b>	Ruth Stone	Anita Thorne
<b>Greeters</b>	Alan and Carol Jensen	
<b>Communion Servers</b>	Sue Shaffer	Jan Beebe
<b>Youth Worship Leader</b>		

***The flowers on the altar are given by  
Les Holland.***

***2017 Flower Chart is in the narthex: sign up for  
your special dates! Fill out the form, attach the  
payment, send it to the church office or drop it in  
the offering plate.***

## **Partnering in Prayer**

Karen Johnson	Andrew Farrer	Jan Lecker
Kim Medina	Kathy Kaiser	Karen & Russ Osborn
Robert Duckworth	Brooke Brown	Beverly Ollila
Daniel Wallace		

## **Welcome To Prince of Peace**

**Worship at Prince of Peace**, an ELCA Lutheran congregation, is a time for each of us, gathered in community, to meet our living Lord Jesus. We extend an invitation to all who believe in Jesus Christ to commune when we celebrate Holy Communion. If you are **searching for a church home**, please know you are welcome at Prince of Peace. Return, let's worship together often.

- ❖ **Children are always welcome in worship.** Activity bags are available for young worshippers at the center entrance to the sanctuary. If you are in need of assistance for children through the age of three, a staffed nursery is available from 9:15 a.m. to 10:30 a.m. in Room 16 in the Education Building.
- ❖ **Sunday School** for children age 4- 6<sup>th</sup> grades is available every Sunday at 9:30 a.m. during the school year.
- ❖ **6-12th Grade Youth and Families** -- Grow in faith and in community through fun, fellowship, service, and more! For a full schedule, visit our website or see Audrey Cox.
- ❖ **Communion Needs:** Gluten-free bread and grape juice are available. If you desire to receive communion in the pew, please notify an usher.
- ❖ **Prayer Requests:** Please write down your concern and place it in the offering plate or prayer box and indicate if the name can be published in this newsletter or just shared with our prayer warriors through the Prayer Chain.
- ❖ **Hospital Calls:** Please call Pastor Rick directly at 408.472.0529 or contact the church office to let us know if you or a family member is hospitalized or for a pastoral visit during rehab in a care center or at home.
- ❖ **Pastoral Care:** If you are seeking help with baptisms, weddings, memorial services or seek pastoral counseling, please contact Pastor Rick Sherrill at 408.472.0529 or the church office directly.
- ❖ **Pastor Office Hours: By appointment.** Pastor Rick, cell: 408.472.0529, email: [pastorrick@popphoenix.org](mailto:pastorrick@popphoenix.org).

**Tuesday's 10:00-Noon and Thursdays, 1:00 p.m.-3:00 p.m.**

- ❖ **Monthly Newsletter:** To receive your monthly newsletter by e-mail, go online to [www.popphoenix.org](http://www.popphoenix.org) and sign up by going to the Current Happenings tab, then the Monthly Newsletters tab, or call the church office for help.
- ❖ **Church Office Hours:** Monday through Thursday, 9 a.m. to 4 p.m. Church Office: 480.945.9537.
- ❖ **Connect with us: Web:** [www.popphoenix.org](http://www.popphoenix.org) **Instagram:** Pop\_Youth **Facebook:** Facebook.com/popphoenixaz  
**Call:** 480.945.9537 **Email:** [office@popphoenix.org](mailto:office@popphoenix.org) **Visit:** 3641 N. 56<sup>th</sup> Street, Phoenix, AZ 85018

**Second Sunday  
after Pentecost  
June 18, 2017**



**Weekly  
Messenger**

## **POP Community News!**

### **Special Father's Day Worship Today!**

Join us for a special worship service honoring the fathers in our lives. We will serve root beer floats after the worship service!

### **POW!...Potluck On Wednesday-June 21st!**

Bring a dish and a beverage to share and join friends for a mid-week potluck and video on Wednesday, June 21<sup>st</sup>, 6:30 p.m. in Room 12. (Child care will be provided) We will be watching the video "I Love to Live and I Love to Laugh" by Dennis Swanberg. See Dena Welch-Rowland or call at 480-220-0396.

### **Healing Prayers Around the Altar June 25.**

Are you suffering in mind or spirit? Is someone in your life facing a difficult situation or challenge? Prince of Peace offers healing prayer at the altar directly following the worship services today and June 25th. We believe God brings healing to all who seek it.

### **Classical Sunday- June 25!**

Let's play tribute to some of our great classical composers through hymns and special music! Violinist Oscar Serrato will be joining as well!

### **YOGA at POP (Every Body Matters)-June 28 at 5:30 pm.**

This is a fitness class for mind, body and faith! All are welcome! We will have a yoga session and time for devotions. We will meet the following Wednesdays at 5:30pm 6/28, 7/12, 7/26, 8/9, & 8/23 in Room 17. Please contact Dena or Greg Rowland or the church office for more information.

### **After the Boxes are Unpacked- Coming This Fall!**

Christ centered study designed for women who are uprooted by a move or other life change. Through Biblical teaching and personal support this study prepares, encourages and equips a woman to let go of the past, rebuild hope, and embrace her new life. Invite someone who has just moved here. Begins August 22<sup>nd</sup>, 9:30 a.m.- 11:30 a.m. Contact Janet DeJonge (janlde76@gmail.com, 763.513.7243) or Nancy Stevens (nancy.stevens@cox.net, 602.418.6963).



### **Best of Ireland Tour-Hosted by Rev. Paul Nelson**

**11 days: May 28-June 7, 2018 :: \$3599 Roundtrip from Phoenix;**  
*Air/Land tour price is \$3239 + \$360 govt. taxes & airline surcharges)*

#### **Tour Includes:**

Roundtrip Air from Phoenix, First Class/Select Hotels, Most Meals, Professional Driver/Guide & Comprehensive Sightseeing. Visit Waterford, Killarney, Galway, Connemara, Sligo and Dublin.

For a brochure and more information contact-**Rev. Paul Nelson at 602.740.7187/Pauln48@cox.net**

### **Fellowship Hour at POP!**

After worship Fellowship is running low of goodies and is in need of hosts for the summer! The sign-up sheets are in Gangsei by the beverage station, or you may talk to Jan Beebe or Martha Weld for details!

## ***This week at Prince of Peace***

### **Sunday, June 18-Father's Day**

9:00 a.m. Nursery  
9:30 a.m. Worship, Sanctuary  
10:45 a.m. Fellowship, Gangsei Hall  
Root Beer Floats

### **Monday, June 19**

6:00 p.m. Women's Bible Study, Choir R

### **Tuesday, June 20**

10:00 a.m. Library Meeting  
1:00 p.m. Knitting Group

### **Wednesday, June 21**

6:30 p.m. P.O.W Potluck on Wed, R 12

### **Thursday, June 22**

### **Friday, June 23**

### **Saturday, June 24**

9:00 a.m. Quilters, R 14

### **Sunday, June 25**

Campfirmation- Youth  
9:00 a.m. Nursery  
9:30 a.m. Worship, Sanctuary



## **Assisting in Worship**

<b>Altar Guild</b>	Nancy Hawthorne	Anita Thorne
<b>Lector</b>	Karen Wolfinger	
<b>Ushers</b>	Ron Swanson Ruth Stone	Ed Zollars Karen Wolfinger
<b>Greeters</b>	Behrens Family	
<b>Communion Servers</b>	Mike and Gwen Jacobs	
<b>Youth Worship Leader</b>		

***The flowers on the altar are given by Don and Karen Johnson in honor of their anniversary.***

*2017 Flower Chart is in the narthex: sign up for your special dates! Fill out the form, attach the payment, send it to the church office or drop it in the offering plate.*

## **Partnering in Prayer**

Karen Johnson	Andrew Farrer	Jan Lecker
Kim Medina	Kathy Kaiser	Karen & Russ Osborn
Robert Duckworth	Daniel Wallace	Beverly Ollila

*Our rebate for May from the Bashas' chain, including AJ's and Food City, was \$82. Thank you for supporting Prince of Peace while you shop!*

## **Welcome To Prince of Peace**

**Worship at Prince of Peace**, an ELCA Lutheran congregation, is a time for each of us, gathered in community, to meet our living Lord Jesus. We extend an invitation to all who believe in Jesus Christ to commune when we celebrate Holy Communion. If you are **searching for a church home**, please know you are welcome at Prince of Peace. Return, let's worship together often.

- ❖ **Children are always welcome in worship.** Activity bags are available for young worshippers at the center entrance to the sanctuary. If you are in need of assistance for children through the age of three, a staffed nursery is available from 9:15 a.m. to 10:30 a.m. in Room 16 in the Education Building.
- ❖ **Sunday School** for children age 4- 6<sup>th</sup> grades is available every Sunday at 9:30 a.m. during the school year.
- ❖ **6-12th Grade Youth and Families** -- Grow in faith and in community through fun, fellowship, service, and more! For a full schedule, visit our website or see Audrey Cox.
- ❖ **Communion Needs:** Gluten-free bread and grape juice are available. If you desire to receive communion in the pew, please notify an usher.
- ❖ **Prayer Requests:** Please write down your concern and place it in the offering plate or prayer box and indicate if the name can be published in this newsletter or just shared with our prayer warriors through the Prayer Chain.
- ❖ **Hospital Calls:** Please call Pastor Rick directly at 408.472.0529 or contact the church office to let us know if you or a family member is hospitalized or for a pastoral visit during rehab in a care center or at home.
- ❖ **Pastoral Care:** If you are seeking help with baptisms, weddings, memorial services or seek pastoral counseling, please contact Pastor Rick Sherrill at 408.472.0529 or the church office directly.
- ❖ **Pastor Office Hours: By appointment.** Pastor Rick, cell: 408.472.0529, email: [pastorrick@popphoenix.org](mailto:pastorrick@popphoenix.org).

**Tuesday's 10:00-Noon and Thursdays, 1:00 p.m.-3:00 p.m.**

- ❖ **Monthly Newsletter:** To receive your monthly newsletter by e-mail, go online to [www.popphoenix.org](http://www.popphoenix.org) and sign up by going to the Current Happenings tab, then the Monthly Newsletters tab, or call the church office for help.
- ❖ **Church Office Hours:** Monday through Thursday, 9 a.m. to 4 p.m. Church Office: 480.945.9537.
- ❖ **Connect with us: Web:** [www.popphoenix.org](http://www.popphoenix.org) **Instagram:** Pop\_Youth **Facebook:** Facebook.com/popphoenixaz  
**Call:** 480.945.9537 **Email:** [office@popphoenix.org](mailto:office@popphoenix.org) **Visit:** 3641 N. 56<sup>th</sup> Street, Phoenix, AZ 85018

**Third Sunday after  
Pentecost  
June 25, 2017**



**Weekly  
Messenger**

## **POP Community News!**

### **Special Classical Sunday Worship Today!**

Join us for a special worship service as we play tribute to some of our great classical composers through hymns and special music. Oscar Serrato will be joining as well!

### **Where are PoP Youth today??**

June 25-30 the following Youth and Adult Mentors will be at the Campfirmation at Tonto Rim Christian Camp in Payson. Please keep us in your prayers. Samantha Ayala, Hailey Cox, Hayden Cox, Abby Creedon, Blayne Hammer, Nicole Hilden, Rachel Hilden, Jordan Lara, Jacob Lara, Lauren Pineda, Nick Safer, Madison Sherrill, Kevin Wooden, Makayla Zubal, and Audrey Cox

### **YOGA at POP (Every Body Matters)-June 28<sup>th</sup> at 5:30 pm.**

This is a fitness class for mind, body and faith! All are welcome! We will have a yoga session and time for devotions. We will meet the following Wednesdays at 5:30pm 6/28, 7/12, 7/26, 8/9, & 8/23 in Room 17. Please contact Dena or Greg Rowland or the church office for more information.

### **Healing Prayers Around the Altar July 9<sup>th</sup> and 23<sup>rd</sup>.**

Are you suffering in mind or spirit? Is someone in your life facing a difficult situation or challenge? Prince of Peace offers healing prayer at the altar directly following the worship services July 9 and July 23<sup>rd</sup>. We believe God brings healing to all who seek it.

### **Christmas in July - Sunday, July 23<sup>rd</sup>.**

As the summer drags on, perhaps you crave both milder temperatures and the sights and sounds of Christmas. On Sunday, July 24 (5 months and 2 days before Christmas!) we will celebrate Christmas in July in our 9:30am worship service with the singing of Christmas carols, a Christmas message and much more. We will also be hosting a toy drive for Phoenix Children's Hospital. Please bring your new, unwrapped toys to the altar that morning as we celebrate God's gift of love by giving to children in need. No toy guns or war toys, latex balloons, scary action figures, candy, gum or food. Please refer to the July Messenger or [www.phoenixchildrens.org/patients-visitors/child-life-wish-list/toy-drive-child-Life](http://www.phoenixchildrens.org/patients-visitors/child-life-wish-list/toy-drive-child-Life) for a list of guidelines.

### **Calling All Musicians!**

Summer is here and we all look forward to a break in our hectic schedules. Vacation Bible School, youth mission trips and vacations are on our calendars. But our ministries and worship time at Prince of Peace continue on. This past year I have helped coordinate musical opportunities for children, teens, adults and musicians during our services. There are so many gifted members in our congregation and the summer months are a great time to share talents. Do you sing? Do you play an instrument? Please let me know if you would like to be part of one of the summer Sundays, or interested in giving piano lessons! Music in worship is a great communication tool and a great way to honor God. Give me a call, send me an e-mail or see me after church. We are all one in mission! Lynne McGinley: 480.440.6081, [l.mcginley@cox.net](mailto:l.mcginley@cox.net)

### **After the Boxes are Unpacked- Coming This Fall!**

Christ centered study designed for women who are uprooted by a move or other life change. Through Biblical teaching and personal support this study prepares, encourages and equips a woman to let go of the past, rebuild hope, and embrace her new life. Invite someone who has just moved here; begins August 22<sup>nd</sup>, 9:30 a.m- 11:30 a.m. Contact Janet DeJonge ([janlde76@gmail.com](mailto:janlde76@gmail.com), 763.513.7243) or Nancy Stevens ([nancy.stevens@cox.net](mailto:nancy.stevens@cox.net), 602.418.6963).



### **Best of Ireland Tour-Hosted by Rev. Paul Nelson**

**11 days: May 28-June 7, 2018 :: \$3599 Roundtrip from Phoenix;**  
*Air/Land tour price is \$3239 + \$360 govt. taxes & airline surcharges)*

#### **Tour Includes:**

Roundtrip Air from Phoenix, First Class/Select Hotels, Most Meals, Professional Driver/Guide & Comprehensive Sightseeing. Visit Waterford, Killarney, Galway, Connemara, Sligo and Dublin.

For a brochure and more information contact-**Rev. Paul Nelson at 602.740.7187/Pauln48@cox.net**

## ***This week at Prince of Peace***

### **Sunday, June 25**

Campfirmation-Youth

9:30 a.m. Worship, Sanctuary

10:45 a.m. Fellowship, Gangsei Hall

3:30 p.m. Children's Bells, Choir R

4:00 p.m. Jr. High Bells, Choir R

5:00 p.m. Adult Bells, Choir R

### **Monday, June 26**

Campfirmation-Youth

9:00 a.m. Desert Bells Camp

### **Tuesday, June 27**

Campfirmation - Youth

9:00 a.m. Desert Bells Camp

9:00 a.m. Firm Believers exercise, R 12

10:00 a.m. Library Meeting

1:00 p.m. Knitting Group

### **Wednesday, June 28**

Campfirmation - Youth

9:00 a.m. Desert Bells Camp

5:30 p.m. Every Body Matters Yoga, R 17

### **Thursday, June 29**

Campfirmation - Youth

9:00 a.m. Desert Bells Camp

9:00 a.m. Firm Believers exercise, R 12

1:00 p.m. Pre-S Tae-Kwon-Do

### **Friday, June 30**

Campfirmation - Youth

9:00 a.m. Desert Bells Camp

8:30 a.m. Sew & Tie, R 14

### **Saturday, July 1**

9:00 a.m. Quilters, R 14

### **Sunday, July 2**

9:30 a.m. Worship, Sanctuary

10:45 a.m. Fellowship, Gangsei Hall

3:30 p.m. Children's Bells, Choir R

4:00 p.m. Jr. High Bells, Choir R

5:00 p.m. Adult Bells, Choir R

## **Assisting in Worship**

**Altar Guild**

Anita Thorne

**Lector**

Kris Kainass

**Ushers**

Bill Dobson

Kat McCartney

Martha Weld

Ruth Stone

**Greeters**

Claire Green

Larry Green

**Communion Servers**

Jan Beebe

Suzy Steinmetz

**Youth Worship Leader**

***The flowers on the altar are given by Beth Schneider in honor of the birth of her great-niece Skylar Kelley!***

*2017 Flower Chart is in the narthex: sign up for your special dates! Fill out the form, attach the payment, send it to the church office or drop it in the offering plate.*

## **Partnering in Prayer**

Karen Johnson

Andrew Farrer

Jan Lecker

Kim Fleden

Kim Medina

Kathy Kaiser

Karen & Russ Osborn

Daniel Wallace

Beverly Ollila

Robert Duckworth

Our rebate for May from the Bashas' chain, including AJ's and Food City, was \$82. Thank you for supporting Prince of Peace while you shop!

## **Summer Fellowship Hour at POP!**

After worship Fellowship is running low of goodies and is in need of hosts for the summer! The sign-up sheets are in Gangsei by the beverage station, or you may talk to Jan Beebe or Martha Weld for details!

## **Welcome To Prince of Peace**

**Worship at Prince of Peace**, an ELCA Lutheran congregation, is a time for each of us, gathered in community, to meet our living Lord Jesus. We extend an invitation to all who believe in Jesus Christ to commune when we celebrate Holy Communion. If you are **searching for a church home**, please know you are welcome at Prince of Peace. Return and let's worship together often.

- ❖ **Children are always welcome in worship.** Activity bags are available for young worshippers at the center entrance to the sanctuary. If you are in need of assistance for children through the age of three, a staffed nursery is available from 9:15 a.m. to 10:30 a.m. in Room 16 in the Education Building
- ❖ **Sunday School** for children age 4- 6<sup>th</sup> grades is available every Sunday at 9:30 a.m. during the school year.
- ❖ **6-12th Grade Youth and Families** -- Grow in faith and in community through fun, fellowship, service, and more! For a full schedule, visit our website or see Audrey Cox.
- ❖ **Communion Needs:** Gluten-free bread and grape juice are available. If you desire to receive communion in the pew, please notify an usher.
- ❖ **Prayer Requests:** Please write down your concern and place it in the offering plate or prayer box and indicate if the name can be published in this newsletter or just shared with our prayer warriors through the Prayer Chain.
- ❖ **Hospital Calls:** Please call Pastor Rick directly at 408.472.0529 or contact the church office to let us know if you or a family member is hospitalized or for a pastoral visit during rehab in a care center or at home.
- ❖ **Pastoral Care:** If you are seeking help with baptisms, weddings, memorial services or seek pastoral counseling, please contact Pastor Rick Sherrill at 408.472.0529 or the church office directly.
- ❖ **Pastor Office Hours: By appointment.** Pastor Rick, cell: 408.472.0529, email: [pastorrick@popphoenix.org](mailto:pastorrick@popphoenix.org).
- ❖ **Monthly Newsletter:** To receive your monthly newsletter by e-mail, go online to [www.popphoenix.org](http://www.popphoenix.org) and sign up by going to the Current Happenings tab, then the Monthly Newsletters tab, or call the church office for help.
- ❖ **Church Office Hours:** Monday through Thursday, 9 a.m. to 4 p.m. Church Office: 480.945.9537.
- ❖ **Connect with us: Web:** [www.popphoenix.org](http://www.popphoenix.org) **Instagram:** Pop\_Youth **Facebook:** [Facebook.com/popphoenixaz](https://www.facebook.com/popphoenixaz)  
**Call:** 480.945.9537 **Email:** [office@popphoenix.org](mailto:office@popphoenix.org) **Visit:** 3641 N. 56<sup>th</sup> Street, Phoenix, AZ 85018