



FALL 2025

September 14 to December 14

PURPOSE

to enable Christians to share their lives as a family,  
for mutual encouragement and strengthening

If you wish to join one of these life groups, please contact the  
facilitator as soon as possible so that they can plan accordingly.

LAMB OF GOD   
LUTHERAN CHURCH

599 E. Chandler Blvd, Phoenix, AZ 85048  
[MyLambofGod.org](http://MyLambofGod.org)

## FELLOWSHIP WITH ONE ANOTHER

When you share your life with a community of fellow believers, we call that “fellowship.” St. John writes, *“We proclaim to you what we have seen and heard, so that you also may have fellowship with us. And our fellowship is with the Father and with his Son, Jesus Christ” (1 John 1:3).* When believers are united to God, they are inevitably united to one another also.

This is necessary. God did not design human beings to face life on their own. Instead, he intended for believers to be woven together in a community so that they might encourage one another as together they walk the often difficult path of life. Consider these words of direction from the Scripture, intended for all Christians.

- *Be devoted to one another in love. (Romans 12:10)*
- *Encourage one another and build each other up. (1 Thessalonians 5:11)*
- *Let us consider how we may spur one another on toward love and good deeds. (Hebrews 10:24)*
- *Offer hospitality to one another. (1 Peter 4:9)*

## PURPOSE OF LIFE GROUPS

Life Groups are one of the ways that Lamb of God carries out those Biblical directives. In summary, the purpose of Lamb of God’s Life Groups is to enable Christians to share their lives, knitting them together as a family, for mutual encouragement and strengthening.

Life Groups are a vital part of our ministry at Lamb of God. We are more than a friendly church; we are a church of friends. Life Groups can be where those friendships are made and nurtured.

## SESSIONS

There are three sessions each year: Winter/Spring, Summer, and Fall. When you join a Life Group, you are committing for approximately three months. Life Groups may carry over from season to season, or they may be something entirely new in a new season. It's up to you what you'd like to participate in each season.

# SHARE & CARE



Type: Service Group

Description: Make a difference by joining together and sharing our gifts and talents through service projects for our church and our community

Facilitator: Sarah Gulden  
Phone: 602-501-5906  
Email: [sjg480@cox.net](mailto:sjg480@cox.net)

Intended for: Anyone

The pitch: We do fun and memorable projects that make a positive impact for people in and outside our community.

Costs: Varied, depending on the project as well as what you wish to contribute

## PLANNED PROJECTS:

Previous service opportunities included military care packages, *Feed my Starving Children*, blanket making for cancer center, and breakfast at Ronald McDonald House.

Watch for future projects to contribute to, with either donations or time.

# CARING CARD MINISTRY



Type: Service Group

Description: In casual workshops, we design, assemble, and embellish handmade greeting cards used by the Card Ministry. Cards are distributed or mailed out when a greeting card is appropriate. An inventory of cards is always available for the congregation's use. Donations for the cards are used to purchase supplies.

Facilitators: Jan Adams  
Phone: 602-881-3406  
Email: janadams4053@gmail.com

Intended for: Anyone and everyone

The pitch: Do you like to work with your hands? Do you want to get to know other church members? Join us in our laid-back times together to create greeting cards.

Costs: All supplies are furnished so there are no costs for participants.

## MEETING TIMES:

Wednesday mornings at 10am to noon at church on the following dates:

- September 17
- October 1, 15, and 29
- November 12

# WOMEN'S BIBLE STUDY

Type: Study Group

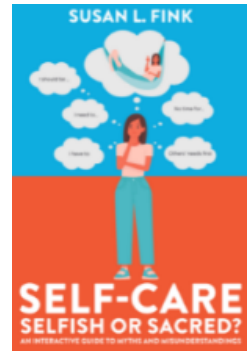
Description: We'll be reading and discussing the book by Susan L. Fink, *Self-Care Selfish or Sacred?*

Facilitators: Laura Palmer  
Phone: 480-516-7364  
Email: [lbp@alum.mit.edu](mailto:lbp@alum.mit.edu)

Intended for: Women who wish to join a Bible study

The pitch: Join for fellowship with your sisters in Christ to study and discuss God's Word

Costs: Purchase of the book, about \$11  
[SusanLfink.com](http://SusanLfink.com) or Amazon



## MEETING TIMES:

Wednesday evenings, 7:00-8:00pm either via Zoom or in person at Lamb of God (your choice)

- September 17 - introductions, ice breaker and discussion of the First Myth, chapter 1
- September 24 - The Second Myth (chapter 2)
- October 1 - The Third Myth (chapter 3)
- October 8 - The Fourth Myth (chapter 4)
- October 15 - The Fifth Myth (chapter 5)
- October 22 - The Sixth Myth (chapter 6)
- October 29 - The Seventh Myth (chapter 7)
- November 5 - The Eighth Myth (chapter 8)
- November 12 - The Ninth Myth (chapter 9)
- November 19 - The Tenth Myth (chapter 10)

# ROMEOS

*(Religious Old Men Eating Out)*



Type: Social Group

Description: Old guys eating lunch

Facilitator: Dave Hackett

Phone: 480-200-3265

Email: [Romeos@DaveHackett.com](mailto:Romeos@DaveHackett.com)

Intended for: Men of any age who eat lunch

The pitch: Retirees, work-from-homers, bored bachelors, or stay-at-home Dads...are you tired of eating yesterday's leftovers alone at your desk? Join the ROMEOS! It's a great way to meet and connect with fellow Christian men and have a good meal.

Costs: Cost of lunch (\$10-\$20)

## MEETING TIMES:

- Tuesday, September 16 12:30-1:30pm Location TBD
- Tuesday, October 21 12:30-1:30pm Location TBD
- Tuesday, November 18 12:30-1:30pm Location TBD
- Tuesday, December 16 12:30-1:30pm Location TBD

Watch the Lamb of God bulletins and emails for upcoming locations. If you have a suggestion for location, share with Dave.

# WOMEN'S GROUP



Type: Social Group

Description: This group for women will focus on social events to create stronger bonds with each other.

Facilitator: Becky Jaehnig  
Phone: 480-242-1359  
Email: bjaehnig@gmail.com

Intended for: Women of all ages

The pitch: This Women's Group is a Christ-centered group that will support women in every stage of life. Single or married, moms of littles or no children or grandmas—all are welcome. This group will endeavor to provide encouragement, growth, learning, and fellowship with every event. It is hoped that this group will help women deepen faith and friendships, embrace God-given purposes, and walk boldly in every stage of life.

Costs: Cost depends on the event

## MEETING TIMES:

- September 20 - Prayer, Pilates, and Protein at church, 9am  
Exercise for all levels led by instructor Jenny Pearson
- October 4 - Pottery Class  
A minimum of eight participants needed, cost is about \$50, which includes time at a pottery wheel, glazing, and firing
- November 1 - Book Talk & Swap, hosted by Laurel Niska  
Bring a book or two to share as well as a few to trade. Leave with a renewed interest in reading and something new to read.
- December 3 - Advent by Candlelight  
At church, 6:30-8:30pm  
Dinner, Advent devotion, and fellowship with the first opportunity for your Secret Sister Reveal

# CHRISTMAS for KIDS



Type: Service Group

Description: This group will plan and carry out a children's Christmas event in December.

Facilitators: Becky Jaehnig  
Phone: 480-242-1359  
Email: bjaehnig@gmail.com

Intended for: Any adult or teen interested helping to plan and facilitate the event. Service hours for school can be earned, depending on level of involvement.

The pitch: Christmas for Kids is a one-day event for younger children. Lamb of God has not had this event in several years, and it may be time to start it again! If you like planning or if you can work/play with children, consider joining this group. You can be just on the planning end or just on the day-of-event end, but preferably BOTH! Let's meet and see where this will take us—hopefully to a fun, successful event for kids!

Costs: Just your time

## MEETING TIMES:

*Note: If the event date is moved, some of the later meeting dates may change.*

- Sunday, September 14 - After the service for about 30 minutes  
First meeting to gauge interest, set date, and make assignments
- Sunday, October 5 - After the service for about 20 minutes  
Check in on the assignments to see ideas, progress, and where help is needed
- Sunday, November 2 - After the service for about 20 minutes  
Check in and make final plans or adjustments
- Sunday, November 30 - After the service for about 20 minutes  
Final check in
- Friday, December 5 (date & time to be verified) - Set up for event
- Saturday, December 6 (proposed date, to be verified) - Event