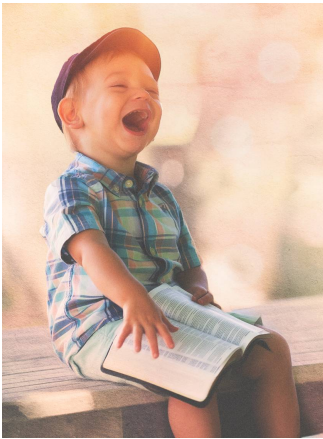


Safety Standards for all Worship Services



Masks will be required Consistent with recommendations from the National Health Director, the Ohio State Governor, Bishop Palmer, and the Van Wert County Health Department, we will be requiring everyone attending worship to wear a mask except when performing for worship (leading worship, leading prayer, preaching). This is to protect everyone present from harm.

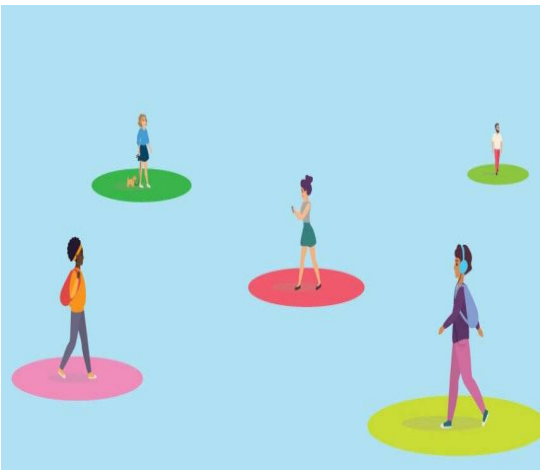


Children are WELCOME in worship Because there is no Children's Church, Nursery Care, or Adult Sunday School until the fall, please don't be afraid to bring your children to worship with you. Even if they are noisy, we are happy to have them worshipping together with us. Children under 2 are not required to wear masks.

Activity Bags—each week, Miss Nancy will provide an activity bag for each child that will go home with you. We welcome you to bring anything else to help your children make it through the worship service.

Before you come to church

1. Ask yourself: Am I in an at-risk population and should stay home from church?
2. Take the temperature of everyone in your party before you come.
3. Refrain from coming if you have any symptoms of COVID-19 or have been exposed to someone who is a confirmed case of COVID-19.
4. Wash your hands.
5. Bring Hand Sanitizer.
6. Bring a mask for everyone in your party.



Social Distancing Standards will be in place:

1. Pews will be marked with 6 foot social distancing in mind.
2. Please only sit with people in your immediate household (If you live together, sit together).
3. Doors to the church will be open 20 minutes prior to the beginning of worship.

(Continued on page 5)

4. A Greeter will open the exterior door for you when you arrive. Please see the schedule as to what door we are asking you to use.

5. All interior doors will be propped open.

6. Ushers will be present to assist you in being seated when you arrive. Please maintain 6 feet between your family and other families as you make your way into the worship space.

7. Offering boxes will be placed at the entrances/exits. Please place your offering in these boxes on your way in or out.

8. Worship will be 45 minutes long.

9. We will remain seated during singing/worship time.

10. Ushers will dismiss the congregation in an orderly fashion, pew by pew to maintain social distancing.

11. There will be no coffee/fellowship time in the narthex or worship spaces.

12. We will not use bulletins, hymnals, pew Bibles (bring your own!), pew envelopes or pew pencils. For those who need them, offering envelopes will be provided—10 to a package—in a sealed bag in the lobby.

13. Hand sanitizer is placed generously around the building. Please use it early and often.



Contact Tracing Precautions

1. To be able to alert you in the event that someone who attended worship should test positive for COVID-19, an accurate list of everyone who attended each service must be maintained.

2. For the 8:15 & 11:00 services, attendance will be taken as you enter the building. Please provide the names of all in your party and contact information (phone and email).

3. For both 9:30 worship services, the reservation list will serve as the basis for attendance. When you arrive, you will be recorded as present. Anyone not on the list who is admitted will need to provide their contact information upon arrival.

