

# St. Paulite

**Support** each other with God's Word and sacraments  
**Share** Christ with our community and the world  
**Serve** others in Christian love



## The New Sign is Up

This last week the new sign went up. I had someone ask me if there is any significance behind the new logo. This explanation was published in the church newsletter about a year and a half ago:

The black cross symbolizes our sins that were transferred from us to Jesus. In the same way his holiness was transferred from Jesus to us. (2 Corinthians 5:21 *"God made him who had no sin to be sin for us, so that in him we might become the righteousness of God"*)

The red symbolizes the blood that was shed for us. It was artistically created to make a flowing motion to remind us that his blood was poured out for us to purify us completely from our sins. (1 John 1:7 *"The blood of Jesus, his Son, purifies us from all sin."*)

The circle in the cross symbolizes eternity. Our God is eternal, and now because of Jesus' work, we will live eternally. The circle is red to remind us that the blood of Christ is the reason we have eternal life. The circle is not cut off by our church name, but rather includes us as those who have been gifted with eternal life. (John 3:16 *"For God so loved the world that he gave his one and only Son, that whoever believes in him shall not perish but have eternal life."*)

**Domestic Abuse Advocate Training** We are thankful that Lori Kinsley was able to come here and give a presentation on Domestic Abuse and what it looks like. She will be back again on April 6th in order to train others to be advocates. If you'd like more information on this, contact Nancy Maedke [nmaedke2@gmail.com](mailto:nmaedke2@gmail.com) or you can directly contact Lori at [lkinsley@kingdomworkers.com](mailto:lkinsley@kingdomworkers.com).

The next **Friday Night Fish Club Fellowship Event** has been planned. Due to the positive comments from last month's dinner, we are again planning to go to the American Legion in Onalaska. The date is set for Friday, April 12th at 5:30 pm. Last month we had over 30 members attend - and we are hoping for an even larger group on the 12th! If you have any questions or are planning to attend, we ask that you sign up by emailing Jay White at [jay@excaliburlaundriesinc.com](mailto:jay@excaliburlaundriesinc.com) or Pastor Ehlke at [behlke@stpaulsonalaska.org](mailto:behlke@stpaulsonalaska.org).

## Inside This Issue

News	<a href="#">1</a>
News	<a href="#">2</a>
Devotion	<a href="#">3</a>
Memorials	<a href="#">3</a>
Bible Studies	<a href="#">4-5</a>
Women's Groups	<a href="#">5</a>
LWMS Winona District Spring Rally	<a href="#">6</a>
WELS Coulee Women's Retreat	<a href="#">6</a>
Grateful and Growing	<a href="#">7</a>
Budgeting Process And Upcoming Meetings	<a href="#">7</a>
Church Library	<a href="#">8</a>
Support Groups	<a href="#">9</a>
School News	<a href="#">10-11</a>



## Contact Us

Pastor Brett Ehlke

[behlke@stpaulsonalaska.org](mailto:behlke@stpaulsonalaska.org)  
608.799.2717

Pastor Shane Krause

[skrause@stpaulsonalaska.org](mailto:skrause@stpaulsonalaska.org)  
608.217.5660

Pastor Daniel Olson

[dolson@stpaulsonalaska.org](mailto:dolson@stpaulsonalaska.org)  
608.797.5793

**St. Paul's Evangelical Lutheran  
Church Onalaska, WI**  
[stpaulsonalaska.org](mailto:stpaulsonalaska.org)  
608.783.2552

### **London Mission Trip - Update**

We currently have 12 people from our church who have purchased plane tickets and will be going to London from June 14th-24th. Our synod is planting a new church there. They will be volunteering in some UK charities to meet some people. They will also be attending worship to welcome new guests on the two Sundays that they will be there. Keep this group and the whole mission effort in your prayers.

**Marriage Enrichment Offered Twice:** We will be offering a three week marriage enrichment class Wednesdays at 6:30 pm May 1, 8, and 22. We'll be offering the same class again on Wednesdays at 6:30 pm June 5, 12, 19. Look for sign-up coming out in the next few weeks.

### **Singles Retreat**

We invite all single members of the WELS and ELS to join us this spring on April 26-28 for the 2024 WELS/ELS Singles Retreat at Camp Shiloh in Pittsburg, Texas for a weekend of fun and fellowship. Register by April 8, 2024 at [wels-els-singles.com/2024-texas-retreat/](https://wels-els-singles.com/2024-texas-retreat/)

### **College-Age Retreat**

This summer, from May 29th-June 2nd, Camp Croix (WELS campground in Danbury, WI) will host its second annual Light of the World Retreat for college-aged Christians (18 -23year olds). This year their capacity tripled. They are able to host 80 college students! For more information, check out the flyer or view this [youtube link](#).

**The WELS Youth Rally** in Fort Collins, Colorado is coming June 25-28. This event is so great for our teens and their faith! And I guarantee they will have fun- like "Highlight of my Summer" fun. Find out more about the rally at the official website: <https://welsyouthrally.net/>

### **Pastor and Teacher shortage**

As of January 29th, 2024, there are currently 160 (145 parish) pastoral vacancies in our synod. And there are 180 teacher vacancies. This number includes a significant number of principal and ECM (Early Childhood Ministry) vacancies. This information is being shared just to let you know what is going on in our synod. A task force was put together by our synod back in 2022 to address the issue. The group will be making recommendations for a synod-wide effort to increase the number of candidates for public ministry. What can we do now?

- † Pray for and encourage current called workers, future called workers and our synod as a whole. Your prayers as well as your personal words of thanks and encouragement go further than you can know.
- † Encourage someone to go into the teaching or pastoral ministry. A recent LCMS' Set Apart to Service initiative asked current called workers, "Who encouraged you to pursue the public ministry?" 34% said their pastor, 27% said a lay person and 25% said members of their family. Simply put, these statistics tell us that we all need to be encouraging young people to consider a career in ministry. Look for young people in your life and encourage them to consider the public ministry. The Lord needs them for His work.





Pastor Shane Krause

## New Life Springs from Christ

Spring is here! A time for new life. After a cold, dark winter (or maybe it was just a cool winter this year!), it's always a joy to see the days get longer, the sunlight stronger and more direct, the temperatures rise, and the brown blahs of late winter are replaced with vibrant green grass and colorful spring flowers. The season of new life can't help but lift your spirits. I don't think it's any coincidence that our Lord saw to it to give us Easter in the spring. Easter always falls on the first Sunday after the first full moon after the vernal equinox (the first day of spring). That's because Easter- and Good Friday, for that matter-are closely associated with Passover. In fact, Jesus was crucified on the very day of the Old Testament Festival of Passover.

Do you remember what Passover was all about? The Israelites were enslaved in Egypt. But God promised to set his people free from their slavery. So he sent a plague-the plague of the firstborn. All the firstborn males in Egypt were put to death by the Angel of Death on that Passover night....except the firstborn males whose doorways were painted with the

blood of the Lamb. God had told his people to select a year-old male lamb without blemish or defect. They were to kill it. And they were to paint its blood on their doorframes. And when the God passed through Egypt that night, he saw the blood of the Lamb on the doorframes and "passed over" that house. The blood of the Lamb saved them!

On Good Friday-the very day of the Passover celebration, we say, "Look, the Lamb of God, who takes away the sins of the world." (John 1:29) Jesus is our Passover Lamb, whose blood was shed and painted on our doorframe, so to speak, so that, when God sees the blood of the Lamb, his wrath passes over us. We are saved by the blood of the Lamb!

But Jesus didn't remain dead. He rose. Three days later, he lives! And that has eternal implications for us. "Christ, the Life of All the Living; Christ the Death of Death our Foe." Christ's resurrection assures us that after the winter of our death, we will spring to life again. Christ's resurrection assures us of our own resurrection from the dead.

May God bless your Easter celebration, which reminds us that our New Life Springs from Christ.

## Memorials

Given in loving memory of Dorothy Will by:

Ken and Nancy Loging  
Steven and Carol Carlson  
Rev. James and Gail Mumm

Grateful and Growing Fund  
Undesignated Memorial  
Undesignated Memorial



**ST. PAUL'S GROUP BIBLE STUDY & SUNDAY SCHOOL**  
*"Grow in the grace and knowledge of our Lord and Savior Jesus Christ." 2 Peter 3:18*

**New Bible Study Topic** – Sundays 9:20 and 10:30 am/Wednesdays at 9:00 am  
Starting April 7 and 10, Pastor Steve Olson will be leading a four week study on the book of Colossians (and maybe Philemon if there's time) on Sundays and Wednesdays. Colossians is a great book to read in a world of turmoil as it reminds us that Jesus reigns supreme over all creation!

**Starting Point Class**

Our next Starting Point class will be held on **Sundays at 9:20** am starting April 14. This class covers the main teachings of the Bible and is a great class for someone new to St. Paul's or someone who hasn't attended a class like this in the last five years. This also serves as our membership class. The atmosphere is relaxed. Feel free to send your children who are potty-trained and are 3 years and older, to Sunday School during that time. If you have a child younger than 3 and need childcare, please let Pastor Ehlke know. You can sign-up at this link: [Starting Point](#) or shoot Pastor Ehlke an email: [behlke@stpaulsonalaska.org](mailto:behlke@stpaulsonalaska.org).

**Sunday School, Young Teen, and Teen Bible Class Options**

**9:15am Sunday School for ages 3 years old through 6<sup>th</sup> grade:** Classes meet in the elementary school wing of our school, just down the hall from the Fellowship Hall. Classrooms are: **3 and 4 Year Old's** (children who are potty trained are welcome to attend), **Kindergarten and 1<sup>st</sup> Grade, 2<sup>nd</sup>+3<sup>rd</sup> Grade, and 4<sup>th</sup>-6<sup>th</sup> Grade.**

**10:30am Young Teen and Teens for Grades 6-12:** These classes will also meet in the elementary school wing of our school, just down the hall from the Fellowship Hall. Two different classes will be offered: **6<sup>th</sup>-8<sup>th</sup> Grade** and **9<sup>th</sup>-12<sup>th</sup> Grade.**

**High School Teen Group:** Pastor Krause will continue to lead youth group for high schoolers on select Wednesday and Sunday nights throughout the year. Let him know if you'd like to get on his text list. (Pastor Krause: 608-217-5660)

**7-8<sup>th</sup> Grade B.I.B.L.E. Classes:** We have plans to resume our 7-8<sup>th</sup> Grade BIBLE in March. Parents will receive information in the new year. We'll meet for about 6-8 weeks and study "hot topics" that are especially relevant that teenagers and adults face in our modern world.

**Remain** is a Bible study and fellowship group for our upper high schoolers and for those in college, roughly ages 17-23. They typically meet the last Saturday of the month at 6pm at St. Paul's. Follow Remain on Instagram for the most up to date news: [@remain.st.pauls](#)

**20s-30s Group** We have a group of folks in their 20s-30s who meet periodically (usually weekly) to study a book or a section of the Bible. The days/times sometimes change due to scheduling conflicts. In the new year, we'll be choosing a new topic to study together. If interested in attending, please reach out to Pastor Ehlke: [behlke@stpaulsonalaska.org](mailto:behlke@stpaulsonalaska.org).

**Men's Bible Class**

**Saturdays 8:00 am**

Facilitator: Steve Loehr

**Meets Year Round**

**Location: Kwik Trip (408 Sandlake Rd)**

Topic: Book of Acts

**New Men's Bible Study:** Starting June 4, we will be providing another men's Bible study on Tuesday mornings at 6:30 am. If interested, you can sign-up with Pastor Ehlke: [behlke@stpaulsonalaska.org](mailto:behlke@stpaulsonalaska.org).

*(Continued on page 5)*



(Continued from page 4)

### **Women's Bible Classes**

#### **Mondays at 4:00 pm**

Facilitator: Wendy Schibbelhut

Zoom option available

[wschibbelhut@stpaulsonalaska.org](mailto:wschibbelhut@stpaulsonalaska.org)

**Location: Fireside Room (Church Entryway)**

Topic: Real Women of the Bible from Time of Grace

#### **Mondays at 6:30 pm**

Facilitator: Wendy Schibbelhut

**Location: Fireside Room (Church Entryway)**

Topic: Prepared to Answer

#### **Tuesdays at 9:00 am**

Facilitator: Lois Jenson

(email Lois to sign-up) [jensonrlj@gmail.com](mailto:jensonrlj@gmail.com)

**Location: Lois' Home**

Topic: Women of the Bible

#### **Wednesdays at 8:20 am**

(Childcare available)

Facilitator: Megan Mueller

**Location: Fireside Room/Cry Room**

Topic: Women of the Bible

#### **Wednesdays at 2:00 pm**

Facilitator: Nicole Wickus

**Location: Fireside Room (Church Entryway)**

Topic: The Mom God Chose: Mothering like Mary

#### **Thursdays at 6:30 am**

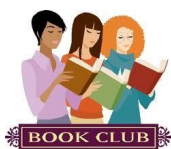
email Jan to get the Skype link

Facilitator: Jan Westerman

[jkwesterman1@yahoo.com](mailto:jkwesterman1@yahoo.com)

**Location: Online Class**

Topic: Book of Acts



**Women in Christ Book Group** meets the second Tuesday of each month September through May at 6:30 p.m. in the Fireside Area at church. The book for April is "Saving Grayson" by Chris Fabry. We will meet again on Tuesday, April 9. Our selection for May is "The Women" by Kristen Hannah. All women of the congregation are invited to attend. Please consider joining us for this time of Christian fellowship through reading.



**WOMEN IN CHRIST CRADLE ROLL** meets every other month on the first Thursday at 6:30 pm in the Fellowship Hall. Children who are enrolled in Cradle Roll receive periodic mailings and books every 6 months until they are 4. Our next meetings will be May 9th and July 11th. (note these dates have been changed due to a conflict with the date) If you are interested we can always use new members.



**WOMEN IN CHRIST CREATIVE HANDS** group meets in person several times throughout the year. We craft blankets and baptismal napkins to present to newly baptized children and adults as a memento of their baptismal birthday. We invite sewers, stitchers, knitters and crocheters to join us. At times we also sew Quiet Bags for children for use during worship as well as table runners for fellowship meals. If you would like to join us, please contact Deb Nuttelman ([randdnuttel@charter.net](mailto:randdnuttel@charter.net)) and we will let you know the next time we meet.

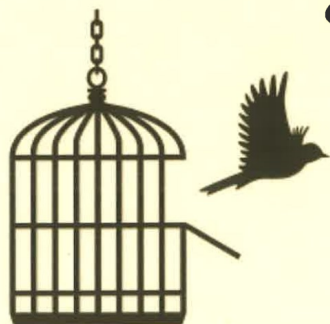


You are invited to attend the  
**LWMS Winona Circuit Spring Rally**

**Saturday, April 13, 2024**  
 Good Shepherd Lutheran Church  
 1500 Sandlake Rd.  
 Holmen, WI

## Thru My Bible

April
1. Matthew 22:1-14
2. Matt. 22:15-46
3. Matt. 23:1-22
4. Matt. 23:23-39
5. Matt. 24:1-31
6. Matt. 24:32-25:13
7. Matt. 25:14-46
8. Matt. 26:1-16
9. Matt. 26:17-29
10. Matt. 26:30-56
11. Matt. 26:57-75
12. Matt. 27:1-14
13. Matt. 27:15-31
14. Matt. 27:32-50
15. Matt. 27:51-66
16. Matt. 28:1-20
17. Jeremiah 26
18. Jer. 27, 28
19. Jer. 29
20. Jer. 30:1-31:26
21. Jer. 31:27-40
22. Jer. 32, 33
23. Jer. 34
24. Jer. 35
25. Jer. 36
26. Jer. 37, 38
27. Jer. 39-41
28. Jer. 42, 43
29. Jer. 44, 45
30. Jer. 46, 47



"I was in prison and you visited me." Matthew 25:36

## *"The Truth Will Set You Free"*

Presentation By  
**Pastor Philip Henselin**  
 Institutional Ministries  
 Prison Chaplancy Program

8 AM Registration and Refreshments  
 9 AM Devotion, Spiritual Growth Presentation, Business Mtg  
 10:30 AM Presentation  
 11:45 AM Closing Devotion, Induction of Officers  
 12 Noon Lunch

Questions? Please contact Connie Bader, Circuit Pres. 856-334-9104 badeconn@gmail



### **Saturday, April 20, 2024 Luther High School Onalaska, WI**

Join us for a day of fellowship, growth, and renewal as we learn from Scripture how God fills us with so much love that it overflows into all we do.

Speakers include:

- ♦ Emily Krill of the "Messy Worship" blog
- ♦ Amy Vannieuwenhoven, author of "Look Up From Your Phone So I Can Love You"
- ♦ Rev. Joseph Radsek from Institutional Ministries
- ♦ Rebeckah Ellinghuysen, MA
- ♦ Anna Wallander of Temple Love Fitness
- ♦ Hayli Littlehead

Visit our website for more details and registration information!

<https://welscwr.wixsite.com/retreat>

## GRATEFUL AND GROWING BUILDING UPDATE



As the construction of our school building project nears completion, excitement and anticipation fill the air. Like diligent craftsmen preparing for a grand event, we are putting the finishing touches in place, ensuring every detail reflects the excellence and vision we've held from the project's inception.

As the finishing touches are applied, we are reminded of the scriptural promise in Deuteronomy 28:3: *"Blessed shall you be in the city, and blessed shall you be in the field." This verse serves as a beacon of hope and assurance, affirming that our efforts will be met with abundant blessings. Let us continue to unite in prayer and thanksgiving. Together, let's ready our hearts to receive the blessings that await us, knowing that with faith, perseverance, and our Lord's blessing, all things are possible.*

### Wish List and Pledge Form Mailing

Everyone should have received a mailing from St. Paul's in the recent past. On one side, there is an opportunity for anyone who didn't pledge towards the building project to do so. Or, for those who have pledged in the past, to either change their pledge or maintain it. The other side offers an opportunity for anyone to give to our Wish List. The items on this list will enhance our already great building with some additional finishing touches that will enrich it for everyone.

### Let's Recap

The new logo is in place, gym floor completed, and finishing touches are just about done. We have also been incredibly blessed to have an abundance of volunteers who have given their time to clean the new building, as well as help move everything into the new building.

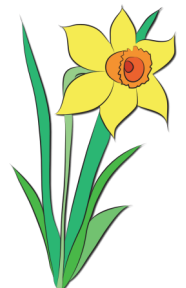
Click on this [link](#) to see the current video update.

Psalm 28:7 *"The LORD is my strength and my shield; my heart trusts in him, and he helps me. My heart leaps for joy, and with my song I praise him."*

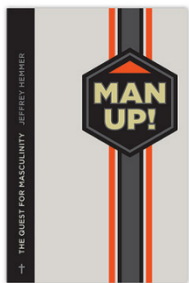
### Budgeting Process And Upcoming Meetings

Our church functions on a fiscal year. Our leaders have been working to put together a budget for this upcoming fiscal year. However, before it is voted in we want everyone in our congregation to see it and be able to discuss it. Here is the plan for rolling out the budget this year:

- ♦ The budget will be placed in the lobby on Sunday, May 12th so you can look at it on your own and be prepared for the meetings
- ♦ Open Forum on Wednesday, May 22nd at 6:30pm - Everyone is invited to talk about and discuss the budget.
- ♦ Voter's Meeting on Sunday, June 9th at noon - The new budget for the fiscal year will be voted in on at this meeting.



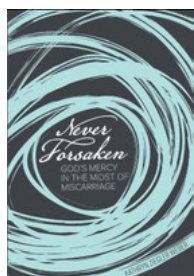
## Church Library



### Man Up!

What does it mean to be a man? Sacrifice. Man Up! by Jeff Hemmer doesn't tell you to take down the feminists or reclaim your God-given role and rights. Real masculinity starts with giving of yourself for the good of those around you and in your care. It's counter-cultural and it's exactly how God designed biblical manhood. Men in all stages of life will appreciate this refreshing perspective whether you're searching for footing in this crazy culture, seeking a godly relationship with your wife, or looking for guidance on raising children.

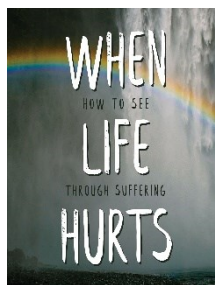
**Location: New Titles Shelf**



### Never Forsaken – God's Mercy in the Midst of Miscarriage

Why my baby? Why? We ask it repeatedly. We seek answers and comfort, and we struggle to make sense of our sorrow. At the core of our questions is doubt. Does God really have our best interests at heart? If so, then . . . why? These stories of others who have suffered miscarriage and infant loss will encourage you to look to God's Word for hope. His Word will guide you in your pilgrimage with grief, offering you the comfort and joy that only Christ can bring. Our heavenly Father remains present, merciful, faithful, and compassionate. You are never forsaken. God's mercy is yours through the work of Christ Jesus in your life . . . and in your baby's life.

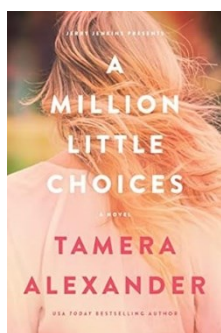
**Location: New Titles Shelf**



### When Life Hurts

If you're hurting, you know how hard it is to see your way forward. Suffering has a way of clouding your vision. It can make you feel isolated, forgotten, confused, aimless, and even hopeless. How do you navigate the heartache in your life when you can't control it or make sense of it? That's the question Pastor Mike Novotny answers in When Life Hurts. This real and sometimes raw journey through the book of Job tackles the tough questions about how pain affects your life and what to do when it does.

**Location: New Titles Shelf**



### A Million Little Choices

The fiction story of two women from different centuries living in the same house who share strikingly similar journeys. Claire life is turned upside down when her beloved husband admits to a "near affair." Husband Stephen accepts a partnership with an Atlantic law firm without consulting her and buys a historic Southern home sight-unseen. In 1863, Charlotte, pregnant and trapped in a marriage to an abusive husband, struggles to protect her unborn child and the enslaved members of her household. Both Claire and Charlotte discover truths about themselves they never realized, along with secrets long hidden that hold the power to bring God's restoration—if only they choose to let it. **Location: New Titles Shelf**

*The library is located in the "fireside" area of the narthex. It is easy to check out books:*

- ♦ *Complete the blue card (from back book pocket) with the date and your first and last name\* printed legibly.*
- ♦ *Place the blue card in the black bin on counter*
- ♦ *\*Your envelope # can be used for privacy purposes. If by chance a reminder call needs to be made for the book to be returned, the envelope # (not the book title) will be given to one of the Pastors and they will make the reminder call.*







## Christian Counseling Services Are Available To Our Congregation

Through Christian Family Solutions, members of our congregation have access to confidential counseling services through a program called MAP (Member Assistance Program). The counselors are WELS/ELS mental health professionals, using secure, online video technology. Short-term counseling is available from any private location that has an internet connection and a web cam. Telephone counseling is also available. If you are interested, please talk to one of our pastors.

## Recovery in Christ

## Recovery in Christ Offers Hope In Jesus

A symptom of addiction of any kind is hopelessness. The focus of Recovery in Christ is to bring the hope of Jesus. RIC meets most Sundays, 4:00 pm here at St. Paul's in the school library and Wednesdays, 1:15 pm at La Crosse's Coulee Recovery Center (933 Ferry St.). To confirm meeting days/times call 608-567-3038 for Sundays and 608-784-4177 for Wednesdays.



## Onalaska Food Basket

The Board of Outreach would like to remind members of our area food pantry services. The Food Basket is located just down the street from church at 735 Sand Lake Road (in the back right hand corner of the American Legion parking lot) and serves residents of the greater Onalaska, West Salem, French Island and Holmen areas with food and personal care items. They are a Christ centered organization dedicated to helping those in need. The Food Basket is open to everyone; however there are general income guidelines for eligibility. If you or your family are in need of their services, please stop in, call (608) 783-7722 or visit [www.thefoodbasket.org](http://www.thefoodbasket.org). Assistance is available on a one-time or on-going basis. All of their services are free of charge.



## Wish List

If you would like to help fund special projects (outside our budget funding), please see the items on **St. Paul's Wish List**. Follow the instructions at the bottom of the list on how to make a donation. Click the link below to go to the list or go to St. Paul's website and on the menu at the top of the page, click **Give** and then **Wish List**. [Master Wish List](#)



## WELS Connection

Keep connected to what's going on around our synod. Click on the link for the monthly WELS connection. <https://wels.net/news-media/wels-connection/>

## St. Paul's Lutheran School



### Forward in Faith – Following the Good Shepherd

Sheep are very gentle animals. They have excellent peripheral vision, and they can differentiate facial expressions. Sheep build friendships and defend one another. Still, to many, sheep do things that make them appear dumb. Perhaps you have watched videos of sheep jumping back into a hole moments after being rescued from it. Sheep can wander off and get separated from the flock. Sheep need a good shepherd to keep them safe.

We share characteristics with sheep. As sinners, we wander off and end up falling into sin. Not long after confessing the sin and asking God to help us avoid it, we end up jumping right back into the same sin. Like sheep, we need a Good Shepherd. The Good Shepherd rescues us when we fall into sin, and He binds up our wounds and comforts us. The Good Shepherd protects us from the Devil, the world, and our own sinful flesh. The Good Shepherd leads us on paths of righteousness. Jesus is our Good Shepherd.

***“I am the good shepherd; I know my sheep and my sheep know me.”*** John 10:14

Our Good Shepherd has been with us all through the 50 years of our school. He has comforted and forgiven sinners. He has led children and adults to springs of living water in His Word. He has protected us from all kinds of evil. As St. Paul's Lutheran School moves *Forward in Faith*, we do so following our Good Shepherd.

***“Being confident of this, he who began a good work in you will carry it on to completion until the day of Christ Jesus.”*** Philippians 1:6

### ST. PAUL'S ACTIVITIES UPDATE

As March comes to an end we saw another great month of St. Paul's activities. Our three robotics teams all competed in the State Robotics competition in Green Bay, Wisconsin. The three teams made improvements to their regular season robots. There were some ups and downs throughout the tournament. Each team experienced success, with two teams finishing in the top 5 in the teamwork category. However, none of our teams earned a bid to the World Championships. These three teams had a very successful season and an ending that they should be proud of.

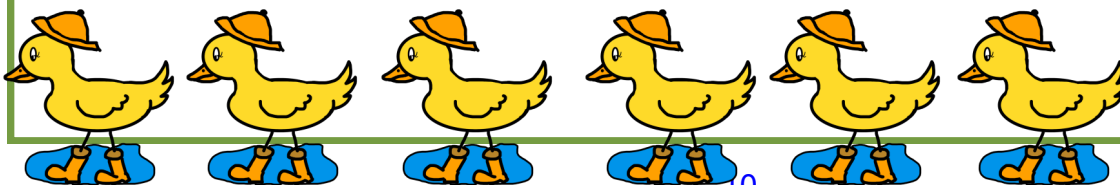
There will be one more opportunity for robotics on May 10, 2024. St. Paul's will host students from area WELS schools for a Battle Bots competition. Build sessions for students interested will start up sometime after Easter. Spectators are welcome!

Our St. Paul's track season will start up after Easter as well. This season is open to interested students in 5th to 8th grades. The schedule and other information will be available for families and coaches soon.

For more information about our activities, go to the school website, Student Life>Activities. Or you can follow this link to our [Activities pages](#).

### WISCONSIN PARENTAL CHOICE PROGRAM (WPCP)

St. Paul's Lutheran School has registered to participate in the Wisconsin Parental Choice Program (WPCP) for the 2024-2025 school year. The application period is February 1, 2024 – April 18, 2024. Current St. Paul's families using the WPCP have received information about applying for the 2024-2025 school year. All others interested can find eligibility information on our school website. You may also call the office with questions.



(Continued on page 11)

(Continued from page 10)

### ENROLLMENT FOR 2024-2025

God is so good! Most sessions of 3K have filled already, something that often doesn't happen until many months later. Once the application period for WPCP ends, we will be able to finalize seats for 4K. All morning sessions will be filled! We will have a Waiting List of 6 students for 4K. Our Kindergarten classroom looks to be reaching capacity for next year as well. Next year we will have two First Grade classrooms, each with a healthy 16-17 students. We do still have seats available in Second Grade, Sixth Grade, and Eighth Grade. Third, Fourth, Fifth Grade, and Seventh classrooms should hit capacity. For the 2024-2025 school year, grades 5-8 will be departmentalized. This includes splitting grades 5 & 7 for some classes and combining them for others.

Grade	Enrollment 2023-2024	WPCP Seats Avail.	WPCP Vouchers as of 3/21/2024	Anticipated 2024-2025 Enrollment
3K	16			18
4K	21	7	6	22
K	31	6(1)	8(2)*	20
1st	17	11	16	33
2nd	25	5	6	20
3rd	27	12	11	26
4th	28	13	11	27
5th	21	12	8	29
6th	32	5	6	24
7th	22	16	12	33
8th	24	3	2	21
<b>Total</b>	<b>264</b>	<b>90(1)</b>	<b>86(2)</b>	<b>273</b>

### Great Things Happening at St. Paul's

How do you combine physical education with music? Try cardio drumming! It can be a great way to get some exercise with practicing rhythm. St. Paul's First Graders did just that recently, and they had a blast doing it. It's a creative way to keep kids active indoors while we wait to get into our new gym!



Every year 7th grade students write an essay based on the yearly theme chosen by the local VFW (Veterans of Foreign Wars). The theme for this year's Patriot's Pen Essay Program was "How are you inspired by America?" Our very own 7th graders won awards: Hannah L. & Hannah O. What a great way to use their God-given gifts!

