

FPC NEWSLETTER

Responding to God's grace through worship, study, and service.

DECEMBER 2025



Upcoming Events

November 29
Fish & Loaves Meal Ministry

November 30
Advent Workshop

Dec 4
Adults 55+ Lunch & Learn

December 7
Youth Nativity and Chili Cook-off

December 8
Prayer Shawl

December 9
Presbyterian Women

December 13
Adults 55+ Christmas Luncheon

December 14
Inquirer Gathering
Lessons & Carols

December 21
Service of Light

December 24
Christmas Eve Services

December 24-January 2
Church Office closed

Each Week:
Sunday Morning Worship at
10:15 AM and Sunday School
& Wonder Hour at 9 AM.

ADVENT, CHRISTMAS AND EPIPHANY

First Presbyterian Church, Franklin

Embracing The Christ THIS CHRISTMAS

EACH SUNDAY OF ADVENT

Lord's Day Worship 10:15 AM

NOVEMBER 30-FIRST SUNDAY OF ADVENT

Matthew 24:36-44: *Keep Watch*
Advent Workshop: 9 AM

DECEMBER 7-SECOND SUNDAY OF ADVENT

Matthew 3:1-12: *A Message From The Edge*
Youth Live Nativity and Chili Cook-off: 5 PM

DECEMBER 14-THIRD SUNDAY OF ADVENT

Service of Lessons & Carols

DECEMBER 21-FOURTH SUNDAY OF ADVENT

Matthew 1:18-25: *Keep Calm and Carry On*
Service of Light: 5:30 PM

CHRISTMAS EVE SERVICES

4 PM AND 6 PM

A Candlelight Service of Word and Sacrament
Nursery available at 4 PM only
Luke 2:1-14: *Surprise, It Is Christmas!*

DECEMBER 28-FIRST SUNDAY AFTER CHRISTMAS

Proverbs 26:22-23 and 1 John 4:16-18:
I Resolve to Gossip More

JANUARY 4-SECOND SUNDAY AFTER CHRISTMAS

EPIPHANY

John 1:1-10: *Testify to the Light*

FPCFRANKLIN.ORG

Advent Poinsettias

order today
online or by check

Would you like to honor someone by dedicating a poinsettia in their memory or in thanksgiving? The cost is \$20, and you may donate online or include Flower Fund in your check memo line. If you are unable to communicate your dedication details on the Sunday Connection Card, you may email Catherine Olson that information.

STAFF REFLECTION

EDDIE BELLIS, INTERIM PASTOR

To my fellow believers at First Presbyterian,

Every year around this time, we see familiar sights and hear similar sounds. We listen to handbells ring outside the department store. We see decorated homes. We drive around and watch the lights flicker on porches. Our sanctuaries fill with the scent of greenery and candle wax. December 25 arrives, and more Christians pause to remember Jesus on that day than on any other, even more than Easter.



There's something about this Advent season that draws us close. We know the stories so well. We read about a baby wrapped in cloth and laid in a manger with fresh straw. We remember a tired young couple who encountered visits from shepherds running through the dark, breathless highways with good news. We recognize the Magi who followed a star from far away, and our angels singing their songs of peace.

And maybe, in some quiet way, we long for that scene every year because it feels safe and still. Hallmark fills the TV, and we can hold a baby. We can picture a manger where a child rests. The scene before us is tender, manageable, and beautiful. But maybe there's more going on here than we've yet seen.

When the church enters this Advent season, it steps into what's called the **Christmas Cycle**—a rhythm of remembering that spans weeks, not just a day. Four weeks of Advent. Twelve days of Christmas. We end with Epiphany, remembering when the story bursts open to the world.

Ordinary time bookends the moment with green banners, familiar hymns, and the steady rhythm of faith lived day by day. Yet the Christmas Cycle interrupts that rhythm and invites us to wonder again.

Advent begins quietly, and this season's themes are that we wait and prepare. We hold our breath for Emmanuel, "God with us." Somewhere in that waiting, we prepare not just our homes or our churches, but our hearts as well. To make room for something, someone is coming who will change everything. And perhaps this Advent, that truth feels especially close to home for us at First Presbyterian Church.

We, too, are in a time of waiting. We wait and pray for the next pastor whom God is calling to lead this congregation. We listen for God's voice. We trust that, just as God sent Jesus into the world at the right time, God will send the right shepherd for this church in God's time. We wait for FPC's new pastor the way the church waits for the coming of Jesus as a baby, and for Christ's return in glory. Our waiting is not empty. We wait with expectation. We wait full of faith, hope, and readiness for what God will reveal.

Then comes **Christmas Day and the twelve-day Christmas season**. The story we've been waiting for unfolds as we remember God's own Son, born among us. Not like us, but God's Son is one of us and is the Creator who takes on the skin of creation. Why?

Because God so loved. Because our salvation depended on love finding its way into flesh and bone. Because sin—our own small selfish ways—needed redeeming. Because light had to step into darkness. But even here, at the manger, the story continues to unfold.

The cycle turns toward **Epiphany**, and that luminous word means "reveal." Epiphany's gift is the moment when the light we've been gazing at spills over, out into the streets, into every nation and neighborhood. The baby becomes the Christ, the Savior of the world. And suddenly we realize we cannot stay kneeling at the manger. We must rise and carry that light into the world. The darkness has not overcome it, and darkness never will.

This year, as we move through Advent, Christmas, and Epiphany, let's remember what God has done and continues to do. Remember the explosion of divine love that entered our midst in the birth of a child, given for our salvation. Remember that this love is not exclusive or limited in any way. It is a gift to be shared, not stored. We wait for the light to come, and we live in that light even now. Merry Christmas to all.

Shalom,

Rev. Edward Bellis, Interim Pastor



Embracing The Christ

THIS CHRISTMAS

Advent devotionals were mailed out on Nov. 21 to all FPC members. If you did not receive a booklet, there are extras in the church office.

You can also access a digital copy of the devotional on the FPC website, under the [Advent tab](#). An email will be sent out each morning during Advent with the daily devotional. Special thanks to all the members who contributed to this year's devotional!

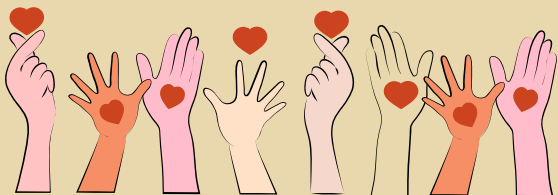


Advent Workshop

Sunday, November 30
9 AM
Wilson Hall

FOR ALL AGES

Stations for all ages including a FISH station to assemble Christmas Appreciation Bags for the 180 teachers and staff at Poplar Grove, our United4Hope school partner.



Would you be willing to lead a Children's Worship session during one of our Sundays this month? This program occurs during the sermon and is both a boon for our parents of young children and a joyful time of age-appropriate worship for our little ones.

Email [Sam Belcher](#) for details!

Grateful

Thank you to **Connie Martin from 21st District Recovery Court** and **Tracey Levine from Healing Housing** for joining us for WNL on November 12 to share about the amazing work each organization is doing to change the lives of people struggling in different ways from drug or alcohol addiction. We appreciate the passion they have for the work and their willingness to share it with us. We also thank Katie and Melissa for coming to share their story of how 21st Recovery Court and Healing Housing helped them change their life. Their determination to do the hard work, their courage to take each next right step, and their willingness to share their stories was moving and inspirational. If you want to learn more and/or support God's work through them, click on their logo.



Adults 55+
Thursday, December 4 @ 11 AM
Barr Conference Room

Chili Cook-off & Live Nativity

December 7 | 5-7 PM



Your donation is your
vote for the best chili!

After the competition, we will
all gather in the sanctuary for a
presentation of the Live
Nativity by our Youth Group.

[CLICK HERE](#) to enter the Chili
competition!

No Sunday School or
WONDER Hour
DECEMBER 28

MORE CE INFO ON PAGE 7

YOUTH NEWS

3

MISSION & OUTREACH

Add to your Thanksgiving weekend by joining us in serving breakfast to our neighbors experiencing homelessness.

Downtown Presbyterian Fish and Loaves Meal Ministry

Saturday, November 29
8:30AM-10:30AM

Free parking provided.
Carpool from FPC as needed.



Basic Essentials Collection

December collection is for
Shorter Chapel AME Church FOOD PANTRY.
Leave donations at the Basic Essentials cart
and we will get them delivered!



In November, our intergenerational FISH team sent "Gifts of the Heart" to Presbyterian Disaster Assistance: 200 Hygiene Kits, 233 School Kits, and 25 Emergency Clean-Up Buckets. Special thanks to Jason Coleman for helping load the truck, and to Bill Hughes and Averitt for providing free shipping to support communities in great need.



ARE YOU INTERESTED IN LEARNING MORE ABOUT FPC?



JOINS US FOR OUR INQUIRER GATHERING

SUNDAY,
DECEMBER 14
9:00 AM
IN THE PARLOR

 **DON'T WAIT.
DONATE!**



Blood Drive

Sunday, January 11
9 AM-1 PM
Wilson Hall

TO MAKE AN APPOINTMENT TO DONATE,
PLEASE VISIT: WWW.REDCROSSBLOOD.ORG
AND USE SPONSOR CODE FPCF19



Thank you to Dale Roos, Chris Roos, and
Greg Bennorth for installing our new
lamppost banners that help tell our
story to all who come to our campus.

HARD BARGAIN ASSOCIATION



Hard Bargain Association- The FPC Outreach Committee sponsored a table at the Hard Bargain Association Roaring Twentieth Annual Celebration Dinner on October 24 and our members dressed for the occasion! So far, they have raised over \$10,000 from the event. [Click here](#) to learn more about Hard Bargain and/or donate to support their important work in our community.

CONGREGATIONAL CARE & FELLOWSHIP



PIZZA & TRIVIA NIGHT

January 24

5:30 PM

Join us for food, fellowship,
and a night of fun team competitions.

Sign up online!



MEAL MINISTRY

Our Meal Ministry is a wonderful way to respond to God's grace. When needs arise, an email is sent to the list of people who have volunteered to be part of this ministry with the date and location of a meal need. If you are able and willing to provide that meal, then you simply sign up on the TakeThemAMeal website that we use. Many choose to also deliver the meal, but if needed, you can request someone else deliver. If you would like to learn more about this ministry, contact Ann Crim 615-293-2993 or Tammy Love 615-472-6634. Thank you in advance for prayerfully considering serving in this way.

GROWTH GROUPS

Thank you to all who participated in our Fall Growth Groups. We heard good things about the book and the conversations it generated.



We had an amazing weekend at **Mountain T.O.P.** in October. We plan to return in the spring and again next October for their Fall Festival. This year we worked on four different home repair jobs as well as staffed the Fall Festival,

This year we worked on four different home repair jobs as well as staffed the Fall Festival, which provides shoes, winter clothing, and books to area families. Join us for the January 14 WNL where our team will host Mountain T.O.P. leadership and share more of the story and dates for 2026.

WORSHIP & MUSIC

SING

Midweek Rehearsals – Each week on Wednesday:
Carillon Handbell Choir (5:15 PM)
WNL Meal (6:00 PM)
Chancel Choir (6:45 PM)
Join us for a day...the week...a special event...
or even longer!
Contact Michael in the Music Office.

LESSONS & Carols

Featuring the Chancel Choir and musical guests:
Peter Simon, concert pianist, Elizabeth Smith, organ
and John Johns, guitar

Sunday, December 14
10:15 AM



Worship Music Musical Guests for December – During the month of December we look forward to welcoming Adam Trokler (flute/trumpet) – John Johns (guitar) – Peter Simon (Concert Pianist) and Tom Wilhoite (bagpipes) to select services. Also...if you would be interested in joining the Chancel Choir for the 6:00 PM Christmas Eve Service please contact Michael in the Music Office.

**Click HERE for
the December
Daily Lectionary**

Service of *Light*

Sunday, December 21
5:30 PM

Join us in a peaceful candlelit sanctuary for a service with space for silence, scripture, and prayer. We will make space for the wide array of emotions that come with this season and reflect on how God's light fills our lives. You will have the opportunity to write the names of people or situations in your life or the world for which you are in prayer and then place those prayers under a lit candle as a visible sign of lifting them into God's light. Please make plans to join us. All are welcome. The service will be livestreamed.



Worship Flower Dedications

Thank you to all who donated worship flowers in 2025 and thank you in advance for all who will donate them in 2026. The worship flowers are an important part of worship as they remind us of the beauty of God's creation and are then rearranged into smaller vases and delivered to members as a reminder of God's love and the love of their church family.

The signups are open and first come first serve. Most dates are still open and ready for you to **sign up today.**

CHRISTIAN EDUCATION CONTINUED

Presbyterian *Women*

Join us on December 9 at 9:45 AM for our monthly study followed by a Soup & Cornbread Luncheon that we host for the staff and office volunteers. Women of all ages are welcome! Contact [Sara Hinds](#) for more information.

Wednesday NIGHT LIVE



Join us for food and fellowship each
Wednesday at 6 PM.

Reserve your meal today!

Suggested pricing: \$10 per adult/youth, \$5 per child,
\$25 family/max.

December 3

Williamson County Homeless Alliance/Prison Ministry- Kevin Riggs

December 10

Breast Cancer Recovery In Action (BRA)- Namaste Anderson

December 17

Carol Sing + History- Michael Snoddy



The annual 55+ Christmas luncheon (potluck) will be held on Saturday, December 13 at 11 AM in Wilson Hall, with fun musical entertainment, fantastic food and fellowship, and just a beautiful start to the Christmas season. [Sign up online](#) or the 55+ bulletin board.



Sign up now and use code
FRANKLIN26 for \$150 off!
More info on the FPC website.



MEN'S BIBLE STUDY

Saturdays at 7:30 AM
in the Church Parlor

Sisters in Spirit

Fridays
10:00 AM
Church Parlor

December 5:

Annual Christmas Luncheon at The Heritage at Brentwood
Remainder of December & Early January:

Advent Devotional Study

December 26: No meeting

CELEBRATIONS & ANNOUNCEMENTS

Church Office Closed
DEC. 24-JAN. 2



Thank you to everyone who has pledged to the 2026 Entrusted to Act campaign. We are wrapping up the campaign with a total of 132 pledges totaling \$1,076,960. We continue to be overwhelmed by the generosity of this faith community. If you have not pledged yet, it's not too late! Pledge cards are available in the church office, and you can pledge online anytime.

Click here
FOR
DECEMBER
BIRTHDAYS

Happy
Birthday

Thank You

Thank you to Tom & Judith Wilson and the Wilson Family Farm for hosting the Celebration of Life for Priscilla and thank you to all in the congregation who have been supporting and praying for our family. - Joe Duarte



FIRST PRESBYTERIAN CHURCH
101 LEGENDS CLUB LANE
FRANKLIN, TN 37069

PHONE: (615) 794-5114
www.fpcfranklin.org

Return Service Requested

SUNDAY WORSHIP: 10:15 AM
SUNDAY WONDER HOUR: 9:00 AM

CHURCH OFFICE HOURS:
Monday-Thursday 9 AM - 4:00 PM
Closed Fridays

CHURCH STAFF

Eddie Bellis, Interim Pastor
Anne Keener, Commissioned Pastor
Michael Snoddy, Director of Music & Organist
Sam Belcher, Director of Youth Ministries
Catherine Olson, Director of Operations
Marie Hayman, Accountant
Kate Lasseter, Nursery Coordinator
Kelly Oldham, Nursery Coordinator

FINANCE & ACCOUNTING



Marie Hayman
Hours: 9AM-3PM
M, W, Th

Giving Options: Mail a check to the church or give online
at fpcfranklin.org/giving.

Thank you for all the ways your generosity, in response to
God's grace, strengthens the ministry and mission
of this congregation.

Church Financial Information

	Oct-25 Actual	Oct-25 Budget	Mar-Oct 2025 Actual	Mar-Oct 2025 Budget
Income	116,071.10	110,230.00	801,092.96	760,910.00
Fixed Expenses - Admin & Facilities	87,117.10	88,892.00	682,128.24	670,813.00
Other expenses	14,479.99	18,524.00	101,063.86	93,733.00
Ordinary income (loss)	14,474.01	2,814.00	17,900.86	(3,636.00)
Other income (expense)	-		-	
Net income (loss)	14,474.01	2,814.00	17,900.86	(3,636.00)