

# Parish Pages

Volume 72 Issue 9

Peace Lutheran Church, ELCA

SEPTEMBER 2025



## DAKOTA OYATE THANK YOU

THANK YOU for your generosity with the Dakotah Oyate Kids Christmas Project!

We sponsored NINE kids getting each of them:

Body Wash, toothpaste & toothbrush, warm hat, gloves, and socks and an age-appropriate fun gift (like games, books, legos, craft projects etc)

Girl, 5  
Girl, 9  
Boy, 5  
Boy, 7  
Boy, 8  
Boy, 12  
Boy 14  
Boy, 16  
Boy, 16

## 2025 SYNOD ASSEMBLY SUMMARY

On June 7-8, 2025, the Eastern North Dakota Synod, ELCA gathered together at the Holiday Inn in Fargo, ND for the thirty-eighth annual Synod Assembly under the theme of "Grace upon Grace." There were a total of 263 people in attendance (177 Lay Voting Members; 70 Rostered Minister Voting Members; 16 Visitors). The business items included hearing reports from officers, adopting the Synod Mission Plan (budget), elections for Synod Secretary, Synod Treasurer, Synod Council and Synod Committees, and adopting the 2026 Compensation and Benefit Guidelines. Participants also heard a State of the Synod from Bishop Tessa Moon Leiseth and State of the ELCA from our churchwide representative, Rev. Tim Brown. Two keynote presentations were shared by Rev. Tim Brown, ELCA Director of Congregational Stewardship. There were nine workshops offered for participants on a variety of topics. Rostered Ministers and Congregations celebrating significant anniversaries were acknowledged. The 2026 Synod Assembly will be held on June 5-7, 2026.

## THE CASTLE PROJECT

Thanks The Eastern North Dakota Synod is honored to announce that it has been selected as a grant recipient through The CaSTLE Project: The Country and Small Town Lived Ecclesiology Project, a five-year initiative led by Wartburg Theological Seminary to support renewal in small town and rural congregations. With this grant, the EaND Synod will receive funding to support the mentor program for Synod Lay Ministers. The project seeks to deepen baptismal identity and cultivate thriving, Spirit-led communities of faith in rural contexts. The CaSTLE Project, funded by the Lilly Endowment Inc., is part of the Thriving Congregations Initiative and aims to renew a baptismal ecclesiology for the long-term flourishing of rural congregational life. The first cohort of grantees will gather at Wartburg Theological Seminary in Dubuque, IA, from August 11-13, 2025, for a summer conference focused on mutual learning, community-building, and innovation.

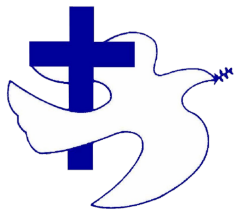
"We are excited to walk alongside the leaders of the Eastern North Dakota Synod in this journey of renewal," said Rev. Ramie Bakken, Director of The CaSTLE Project.

Bishop Tessa Moon Leiseth expressed her gratitude for this opportunity for the EaND Synod. "This grant allows the synod to expand on the important work that is already happening and to grow it in important ways for the flourishing of ministry in EaND." EaND Synodical Women's Organization Annual Fall Convention: "Surrounded by the Spirit"

September 13, 2025  
St. Olaf Lutheran Church, Devils Lake  
Keynote Speaker:  
Prairie Rose Seminole  
RSVP to Jeanne Wobbema:  
mrswo@gmail.com

## Inside this issue:

Headlines	1
Pastor Cassie	2
Youth	3
Social Ministry	4
Stewardship	5
Calendar	6
Rummage Sale	7
Fellowship	8
Committees	9
Birthdays	10
House update	11



## Post from the Pastor

---

**Raising children in faith is hard.** It's why we surround parents at their child's baptism are promise to help raise them in the faith. "It takes a village" isn't just an old mantra--- it's the truth! When kids are baptized at Peace, the congregation (that's you and me!) promised to help support parents in fostering the faith life of their children through regular education & fellowship opportunities for kids (things like Sunday School & VBS). But a few years ago we tried an experiment- we saw that many families had other commitments on Sundays and attendance was low and sporadic. We wondered--- what would happen if we switched from Sunday morning education to Wednesday evening? Would we gain more families? have more regular attendance? more easily find adults able to lead our classes? What we saw is that families have busy seasons- whether our group gathers on mid-week or weekend & that attendance was low in January and May no matter when we gathered. We did see some new families join our time, but also saw that our youngest kids (specifically PreK-1st grade) did not attend because the midweek evening got too late. We also saw that it's a challenge to find adult leaders, no matter when we meet. So, to ensure our youngest kids have a chance to grow in their faith, this fall, we are switching to Sunday morning education for our PreK3-grade 4 kids. Raising children in faith will still be hard, but's it's also worthwhile and exciting. There are so many caring adults here at Peace who will ensure that our children grow up in this church knowing they are loved children of God!

Your partner in the journey,

*Pastor Cassie*  
Pastor Cassie

# SAVE THE DATE FALL DINNER

*November 9 @ 5:30p*

HOSTED BY OUR YOUTH  
SUPPORTING SUMMER TRIPS & THE GENERAL FUND

SUGGESTED  
TICKET  
DONATION:

*\$15-35*

warm fall meal  
details & tickets available  
next month

*vegetarian & GF options available*





Peace's Amazing Kids

# 2025 FAITH FORMATION

Sunday School, FiF, and Confirmation

Prek3 - grade 4

grades 5- 7

grades 8-9

## FALL KICK-OFF

September 14

3rd graders receive Bibles in worship  
parent/student learning after



September 24 6:30-7:30

WEDNESDAY PROGRAMMING  
GRADE 5 - GRADE 9

register  
online

September 28 9:00-9:45

SUNDAY SCHOOL  
AGE 3 - GRADE 4

back to school prayer

Almighty God, you give wisdom and knowledge. Grant teachers the gift of joy and insight, and students the gift of diligence and openness, that all may grow in what is good and honest and true. Support all who teach and all who learn, that together we may know and follow your ways; through Jesus Christ our Lord. Amen.

See YOU at

**Sunday School**

kicks off  
September 28

## Noisy Change

Next noisy Change:

September 22

October 26

November 23



## MEALS AT CROSSROADS

help us feed hungry college students this year:

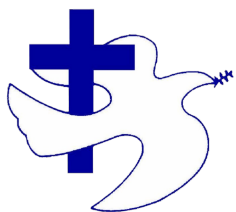
September 8, October 6,

November 24,

December 7,

January 11, February 2,

March 15, May 4



## YWCA SPONSOR-A-STUDENT

With your generous donations and participation in the YWCA Sponsor-A-Student Program, we were able to sponsor an additional two students for a total of four with back-to-school outfits. I was so happy to drop off our bags which were stuffed full with a complete outfit, under garments, socks and athletic shoes made for running and gym classes. Also included were various items such as notebooks, folders and ink pens. What an amazing number of students we were able to "send back to school in style". Thank you for your monetary support and to those who took part in the shopping and for making a difference in the lives of these children.



## AUGUST MICAH'S MISSION

### HEART-N-SOUL MOBILE CAFÉ

Back for the Season!

The food trailer is back! Heart-n-Soul Mobile Café will be in our parking lot once a month on Wednesday afternoons. We hope you will come to support this community non-profit. Come to eat and enjoy a good meal (remember, it's pay as you can). There are usually 2-3 healthy choices including dessert. We also need a few folks to step up as volunteers to showcase Peace's welcoming hospitality.

**WHEN: 4:30-6:30pm Sept 24**

### WAYS TO PAY FOR YOUR MEAL:

1. Pay the suggested price
2. Pay what you can
3. Volunteer for your meal
4. Pay it forward

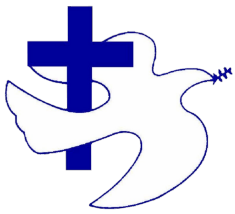
The mobile café is at other locations around the community several days each week. Heart-n-Soul is committed to addressing food insecurities, building communities, and providing nutritious food to nurture body, heart, and soul.

[www.heartsoulcafe.com](http://www.heartsoulcafe.com) also on Facebook!

**Who can volunteer?** You! We need 2 or more volunteers each session. This is perfect for a parent and teen or responsible pre-teen or maybe two adults. Come before 4 to set up and help to clean up afterwards. Support and welcome the friendly food trailer folks as they set up. We set up tables, welcome visitors, sit and visit with folks. We're done by about 7:00. Sign up will be on the entry table.







## Please & Thank you

### GIVING OPTIONS

To conveniently give by text, send a text to 888-910-2311 with the dollar amount you wish to give \$0.00, followed by where you want to direct the gift,

**Gen** for General Fund

**Ben** for Benevolence Fund

**Bld** for Building Fund

**Food** for Food Shelf

**ELCA** for ELCA World Hunger

**Justice** for Peace & Justice

**Flowers** for Flowers for the Sanctuary

**TNC** The Neighborhood Church

**THX** Thanksgiving

**Xmas** Christmas

**Youth** Youth Trip

**Kitchen** Kitchen Remodeling Project

**GOG** Gift of Giving

If it is your first time you will be directed to a link to enter in your account information, I recommend a credit card for maximum security. Following setup you will receive a text acknowledging your gift, there will be some additional instruction should you want to make this a recurring gift, or if you made an error to "refund" your gift (cancel the gift). The offering secretary will also get an e-mail to record your offering.

You can also give electronically through our web site [www.fargopeace.org](http://www.fargopeace.org). Click on the "Make an Offering" to set up an account on the secure Vanco website. Again the first time you will need to create a profile with your name, address, password, and account information. Again, I recommend a credit card for maximum security. When you make donations on this site you will receive an e-mail acknowledging your gift. The offering secretary will also get an e-mail to record your offering.

### FOOD SHELF:

Our Food Shelf is looking for any breakfast/snack/granola type bars that are easy to take on the go. We need spices like black pepper and curry powder and instant potato and pasta mixes. We are happy to take your **recycled plastic grocery bag** donations to be used to bag our food shelf groceries. Please drop off your clean, regular sized bags at the food shelf during office hours or on Sunday. As always, the food shelf needs monetary donations.

### WEED & WATER WEDNESDAYS

We gather to care for our beautiful church grounds and to enjoy fellowship. Come at 9:00 or any time it works for you. There's always a weed to pull or a spot that needs attention. If you have any bedding plants (flowers or veggies) we can use them! Please bring gardening tools if you have them. Thanks for your help!

## memorials & gifts

**Gifts In Memory of:**  
**Dick Peterson**

Given by:

Mark & Arlene Francis

Fund:

Benevolence

**Joyce Schoenfish**

Given by:

Mark & Arlene Francis

Fund:

Benevolence

### TUESDAY FOOD SHELF VOLUNTEERS

Pictured below are our usual Tuesday Food Shelf volunteers. (left to right) Elly Heinz, Ruth Carnal, Steve Carnal, Ronda Zaragoza and Spook. They usually arrive around 9am to start setting up. The entry becomes a waiting room lined with chairs. The sign up table becomes the sign in table where guests meet Steve and he enters their name into the database. After that, Ruth helps them go through the list of our current food choices. Elly and Ronda then take that list of choices to pull items off the shelves and out of the fridge/freezer to pack them up and get them on their way. We also have a few people that help out when they are able to and others that bring in food and paper product donations on a regular basis. Now that it is garden harvest time we have been getting some great fresh produce donations. Of course someone also needs to organize that influx of produce which usually entails setting up an extra table to display the available items for our guests to choose from. We are very grateful for our dedicated volunteers. They are great to work with if you ever want to help them out!



# SEPTEMBER

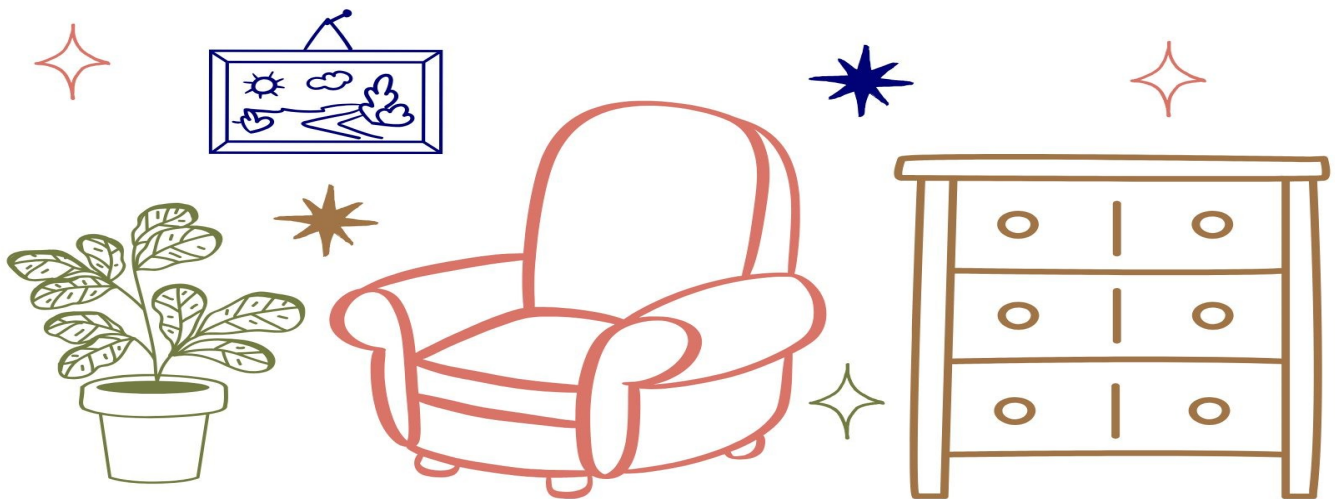
Sunday Monday Tuesday Wednesday Thursday Friday Saturday

<b>31</b> 10:00am Worship 11:00am Coffee by Foundation	<b>1</b> <b>Labor Day</b> Office Closed	<b>2</b> 10:00am Food Shelf	<b>3</b> 10:00am Bible Study 8:00pm AA 12 step	<b>4</b> 3:00pm Food Shelf 7:00pm AA Recovery	<b>5</b> 9:30am Men's Coffee	<b>6</b> 8:00am Serving at Micah's Mission 9:00am Private party
<b>7</b> 10:00am Worship w/ Comm 11:00am Coffee by Fellowship Committee	<b>8</b> Fall Theological Conf 4:00pm NDSU Music 6:00pm Crossroads meal	<b>9</b> Fall Theological Conf 10:00am Food Shelf 11:00am Lunch Club 4:00pm NDSU Music	<b>10</b> Fall Theological Conf 10:00am Bible Study 1:00pm Card Making 4:00pm NDSU Music 8:00pm AA 12 step	<b>11</b> <b>Patriot Day</b> 3:00pm Food Shelf 4:00pm NDSU Music 7:00pm AA Recovery	<b>12</b> 4:00pm NDSU Music	<b>13</b>
<b>14</b> <b>Rally Sunday</b> 8:30am Council meeting 10:00am 3rd Grade Bibles 10:00am Worship 11:00am Coffee by Peace & Justice	<b>15</b> 4:00pm NDSU Music	<b>16</b> 10:00am Food Shelf 4:00pm NDSU Music	<b>17</b> 10:00am Bible Study 4:00pm NDSU Music 8:00pm AA 12 step	<b>18</b> 3:00pm Food Shelf 4:00pm NDSU Music 7:00pm AA Recovery	<b>19</b> 9:30am Men's Coffee 4:00pm NDSU Music 5:00pm Wedding rehearsal	<b>20</b> Wedding
<b>21</b> 10:00am Worship w/ Comm 11:00am Coffee by Social Ministry	<b>22</b> <b>First Day of Autumn</b> 4:00pm NDSU Music	<b>23</b> 10:00am Food Shelf 4:00pm NDSU Music	<b>24</b> 10:00am Bible Study 4:00pm NDSU Music 4:30pm Heart-n-Soul Cafe 6:30pm FiF & Conf 8:00pm AA 12 step	<b>25</b> 1:00pm Fold Newsletters 3:00pm Food Shelf 4:00pm NDSU Music 7:00pm AA Recovery	<b>26</b> 4:00pm NDSU Music	<b>27</b>
<b>28</b> Alicia Paul 10-year employee anniversary 9:00am Sunday School 10:00am Noisy Change 10:00am Worship 11:00am Coffee by Youth	<b>29</b> 4:00pm NDSU Music	<b>30</b> 10:00am Food Shelf 4:00pm NDSU Music	<b>1</b> Rummage set up 10:00am Bible Study 4:00pm NDSU Music 6:30pm FiF & Conf 8:00pm AA 12 step	<b>2</b> Rummage set up 3:00pm Food Shelf 4:00pm NDSU Music 7:00pm AA Recovery	<b>3</b> Rummage set up 9:30am Men's Coffee 4:00pm NDSU Music	<b>4</b> Rummage set up 8:00am Serving at Micah's Mission

Our on-line calendar has up-to-date changes being made through out the month. Find it here: <https://1492457.view-events.com>

# RUMMAGE SALE

**FRIDAY, OCT 17 | 3PM – 7PM**  
**SATURDAY, OCT 18 | 9AM – 1PM**  
**FRIDAY, OCT 24 | 3PM – 7PM**  
**SATURDAY, OCT 25 | 9AM – 1PM**



**FURNITURE | KITCHENWARE | DECOR | PLANTS | TOYS  
CLOTHES | BOOKS | ART | ACCESSORIES | SHOES**

**DONATIONS WELCOMED STARTING OCT 1  
PROCEEDS BENEFIT THE KITCHEN REMODEL**

Your help is greatly appreciated in —

- unpacking and set-up
- arranging merchandise
- pricing
- selling
- cleanup

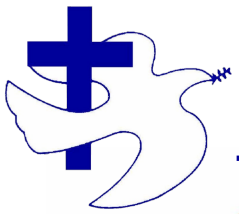
Please watch for the sign-up sheet coming soon.

In addition to our usual Mon-Fri daytime hours, we will have some work prep hours on **Wednesday evenings**:

-3 to 7 pm-Oct 1, Oct 8, Oct 15







## Participate

---



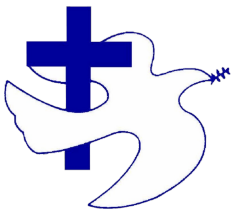
Birthday Sunday is the first Sunday of each month. Are there any special birthdays in the upcoming months that you would like to celebrate? Please sign up if you would like to provide birthday cupcakes for the upcoming months.

Thank you, the Fellowship Committee

Thank you to everyone that participated in our summer potlucks!







## Pieces of Peace

---

### ALTAR GUILD

Altar Guild Meeting- Potluck Lunch

**Thu. Sep. 11, at noon.**

Altar Guild members will meet Thu, Sep. 11, at noon. Potluck lunch, garden level, as we make plans for the church season ahead. Please plan to attend if possible, and new members are always welcome.

### FOUNDATION

The purpose of the Peace Lutheran Church Foundation is to enhance the work of the church by establishing new ministries and stewardship opportunities in addition to and apart from the general operation of the congregation.

### CARD MAKING

The card making group will meet

**Wednesday, Sept 10 at 1 pm**

— in the coffee area.

Please join us if you care to be involved in remaking greeting cards, to offer for sale at \$1 each. Since the beginning of the project, sales now total \$3633, which goes toward the kitchen remodeling fund. Thank you for donating your used cards, and buying them back after they've been remade!!!

### LUNCH CLUB

Peace Lunch Club is a great way for members of Peace to get to know each other better. It is open to both men and women. Each month we choose a different restaurant to go to. We meet at the chosen restaurant at 11:00 on the second Tuesday of the month. We'd love to have you join us whenever you are able to!

**Tuesday, Sept 9 at 11 am**

Applebee's on 19th Ave N Fargo

### MICAH'S MISSION

**Saturday, Sept 6 at 8 am**

The first Saturday of the month, a group of Peace volunteers prepare and serve a brunch at Micah's Mission (formerly Churches United for the Homeless). If you would like to join us or have questions call the church office.

### MEN'S COFFEE

**Sept 5 & 19 at 9:30 am**

A gathering on the first and third Fridays for a time of fun and fellowship.

### FELLOWSHIP COMMITTEE

The Fellowship Committee serves coffee, birthday cupcakes and sandwiches on the first Sunday of each month. They work to create events in the hopes of bringing members and visitors together for a time of fellowship. Some events have included meals, community service, art projects, games, and celebrations. **They are always welcoming new members so if you have any interest please contact the church office.**

### SOCIAL MINISTRY

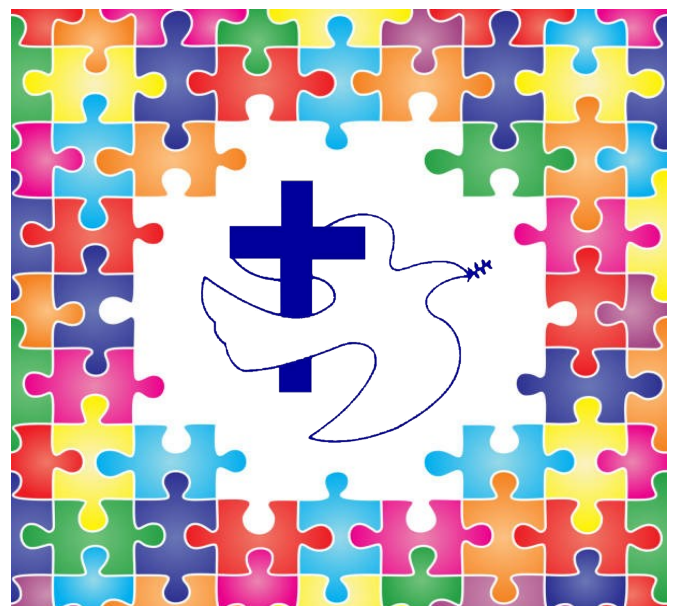
We serve coffee on the third Sunday of each month. We also help with Heart-n-Soul Café, Holiday Food Baskets, Benevolence donations, and much more! Let us know if you are interested in joining us at anytime.

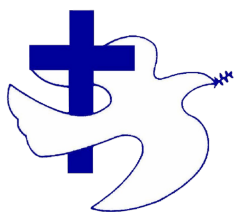
### WEEKLY BIBLE STUDY

Wednesdays at 10 am gather for coffee, fellowship, and a look at the weekly lectionary text.

### PEACE CARES TEAM

Visits residents of Bethany Retirement Living  
201 S University Dr Fargo  
Training available  
Contact Paula Larsen 701-212-2421





## People to Celebrate



# SEPTEMBER *birthdays*

- |                    |                     |
|--------------------|---------------------|
| 1 Allison Barry    | 16 Karla Grant      |
| Susan Bornsen      | Jennah Powell-Kelly |
| 2 Juan Carnal      | 18 Michael Haugen   |
| 3 Samantha Hagen   | Scott Jacobson      |
| Mary Skrogstad     | 19 Shirley Strand   |
| 4 Megan Horsley    | 20 Jeremy Vogel     |
| 5 Tim Tucker       | 23 Edie Discher     |
| 6 Leann Mengelkoch | 24 Terry Thompson   |
| Dustin Mertz       | 25 Sandra Carnal    |
| 8 Angela Ward      | 26 Carol Heggeness  |
| 10 Angela Flesberg | Gladys Tweit        |
| Kelly Larson       | Shirley Wigen       |
| 12 Kari Decker     | 27 Donny Kackman    |
| 13 Jason Halvarson | R. Douglas Larsen   |
| Donovan Holland    | 28 Ava Dalbol       |
| Joseph Naves       | Kari Kackman        |
| Samuel Naves       | Paula Larsen        |
| 14 Cindy Ackley    | 29 Richard Larsen   |
| Trevor Nelson      | Ryan Tucker         |
| Debbie Tucker      | 30 Susan Balsdon    |
| 15 Riley Wanzek    |                     |

**Welcome  
Autumn**



**Alicia Paul**  
September 28  
10 Years



**EVERY SHEEP COUNTS!**  
*IS YOUR INFO UP TO DATE?*

### Students:

We celebrate you as you return to school and let your light shine! We still have some backpack tags available if you didn't get one yet.

**LET YOUR LIGHT  
SHINE  
BEFORE OTHERS THAT THEY SEE  
YOUR GOOD WORKS  
AND GIVE GLORY TO YOUR FATHER IN HEAVEN**  
*Matthew 5:16*

### Peace Lutheran Church Staff

#### Senior Pastor

Cassie Anderson

#### Visitation Pastor

Jessica Miller

#### Office Administrator

Alicia Paul

#### Accountant

Sarah Heinle

#### Financial Assistant

Susie Balsdon

#### Organist

Dr. Jean M. Hellner

#### Wedding Coordinator

Lynette Seminole

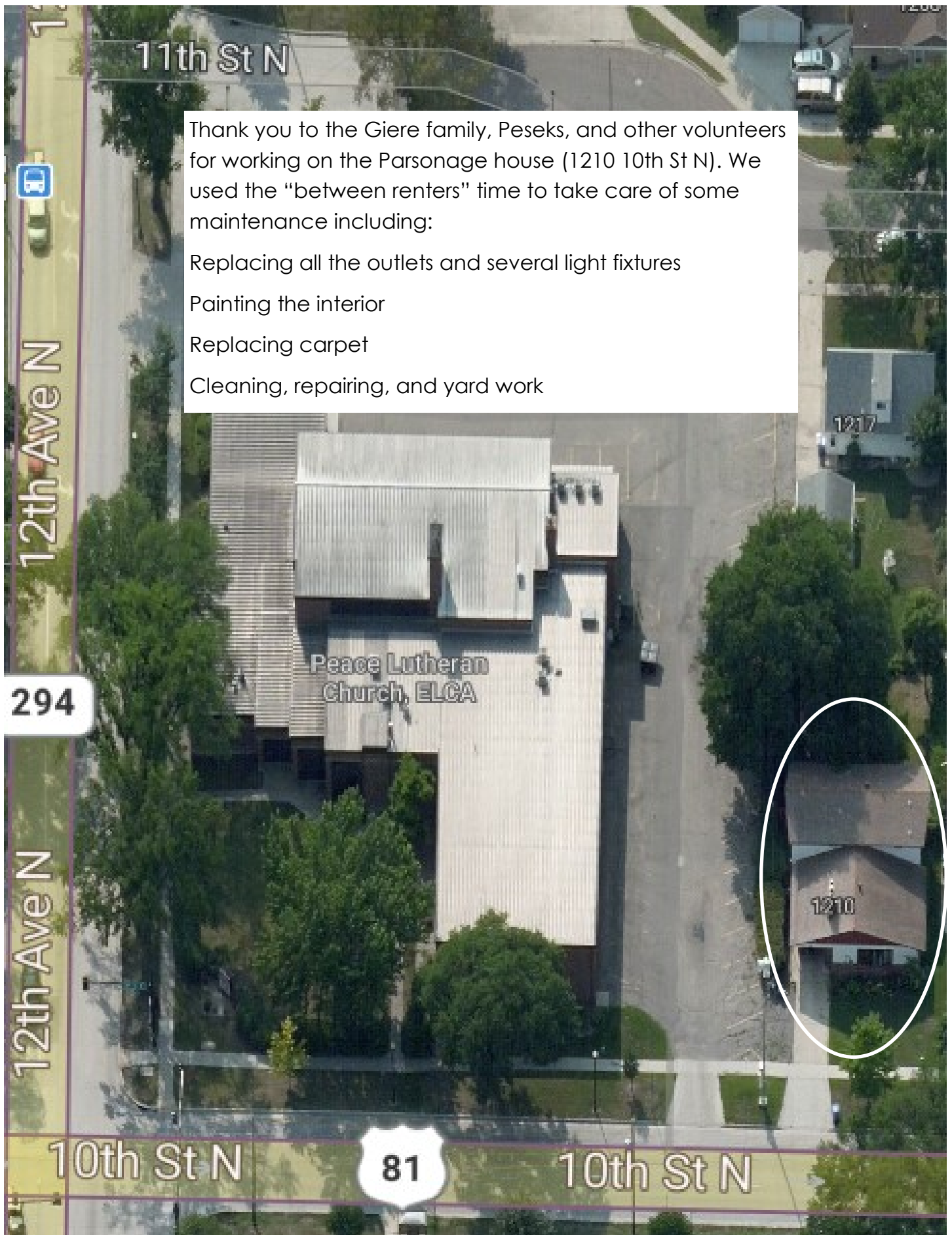
#### Custodian

Lauren Giere

#### Custodian

Mya Giere





11th St N

Thank you to the Giere family, Peseks, and other volunteers for working on the Parsonage house (1210 10th St N). We used the "between renters" time to take care of some maintenance including:

Replacing all the outlets and several light fixtures

Painting the interior

Replacing carpet

Cleaning, repairing, and yard work

12th Ave N

294

12th Ave N

10th St N

81

10th St N

**Peace Lutheran Church**  
1011 12th Ave N  
Fargo ND 58102-3527

**NON-PROFIT ORG.**  
**U.S. POSTAGE**  
**PAID**  
**FARGO ND 58102**  
**PERMIT #848**



**Electronic Service Requested**

### Outreach Programs-Please Join Us!

#### Food Shelf

- Tuesdays from 10am-noon
- Thursdays from 3-5:00 pm

#### Crossroads Lutheran Campus Ministry

- Preparing and serving a meal at NDSU Crossroads
- Watch calendar for dates

#### Worship & Church Information

##### Sunday

- 9:00 am Sunday School (PreK 3-Grade 5)
- 10:00 am Worship [www.facebook.com/fargopeace/videos](http://www.facebook.com/fargopeace/videos)  
Communion is served on the 1<sup>st</sup> & 3<sup>rd</sup> Sundays

##### Wednesday

- 6:30 pm FiF (Grade 6-7)
- 6:30 pm Confirmation (Grade 8-9)
- 6:30 pm Youth Group (Grade 6-12) 2nd Wed ea. mo.

##### Office Hours

- 9:00 am - 3:00 pm Mon-Fri

##### Contact Us

- Church Office 701-232-7166
- [www.fargopeace.org](http://www.fargopeace.org)
- [peacelutheran@fargopeace.org](mailto:peacelutheran@fargopeace.org)
- [facebook.com/fargopeace](https://facebook.com/fargopeace)
- [eandsynod.org](http://eandsynod.org)

#### Micah's Mission

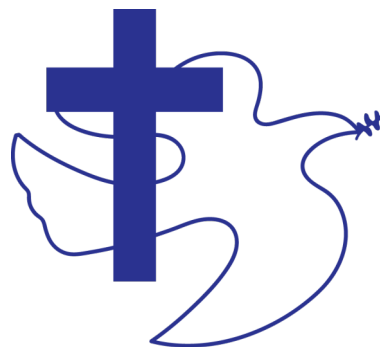
- Preparing and serving a meal
- 8:30-11:30am 1st Saturday of each month

#### The Neighborhood Church

- Preparing and serving a meal
- 6:30 pm 3rd Wednesday during school year

#### Peace Cares Team

- Visit Bethany Retirement Living residents



#### **Peace Lutheran Mission Statement**

*United in Christ we worship, share our gifts, and work for peace and justice.*