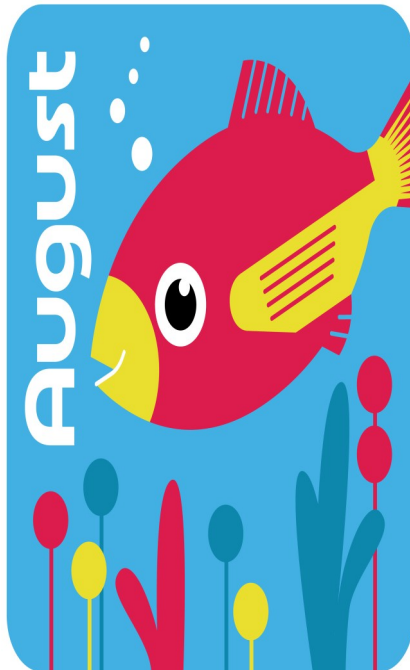


# Parish Pages

Peace Lutheran Church, ELCA

**AUGUST 2025**



## TOILET PAPER NEEDED

Our Food Shelf tries to give one roll to each family that visits so each package is stretched as far as possible. Your donation is greatly appreciated!



## FROM GREAT PLAINS TO PEACE

Thanks to your support of our food shelf, we place a monthly order with Great Plains Food Bank, receiving food at a steep discount compared to retail prices. The ordering, pick-up, unpacking, and distribution is handled completely by volunteers!



### Inside this issue:

Headlines	1
Duluth trip	2
Youth	3
Social Ministry	4
Stewardship	5
Calendar	6
Rummage Sale	7
Fellowship	8
Committees	9
Birthdays	10
Duluth trip cont.	11

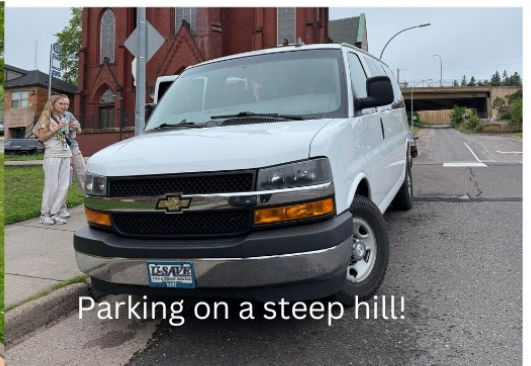




the famous  
Lift Bridge



lunch in the park



Parking on a steep hill!

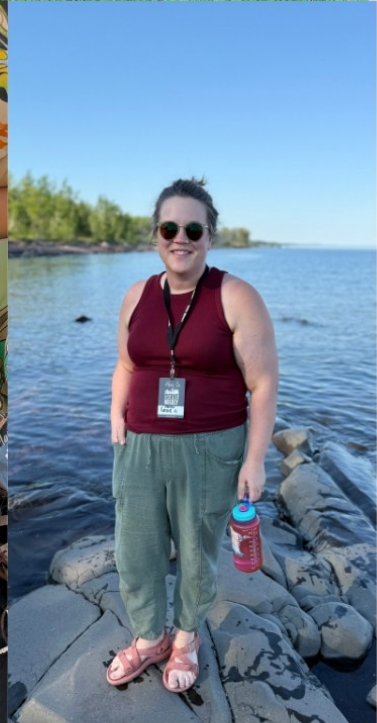
# SERVE BOLDLY DULUTH



weeding at the free community  
garden



evening in Canal Park with some  
youth from the other church  
serving alongside us





# PEACE LIKE A RIVER LOVE LIKE THE OCEAN VBS

August 13  
6:30-8:00pm  
age 3 - finished grade 5  
email Pastor Cassie to sign-up



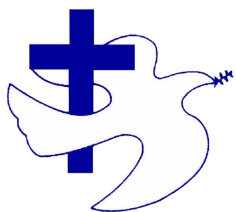
After a day of work projects, we crossed over into Wisconsin & enjoyed Wisconsin Cheese curds!

**Noisy Change**  
Next noisy Change:  
September 28



Our time at Serve Boldly was spent with Youth from Our Savior's- Owatonna, MN





### HEART-N-SOUL MOBILE CAFÉ

Back for the Season!

The food trailer is back! Heart-n-Soul Mobile Café will be in our parking lot once a month on Wednesday afternoons. We hope you will come to support this community non-profit. Come to eat and enjoy a good meal (remember, it's pay as you can). There are usually 2-3 healthy choices including dessert. We also need a few folks to step up as volunteers to showcase Peace's welcoming hospitality.

**WHEN: one Wednesday each month 4:30-6:30pm**

**\*Aug 20 \*Sept 24**

#### WAYS TO PAY FOR YOUR MEAL:

1. Pay the suggested price
2. Pay what you can
3. Volunteer for your meal
4. Pay it forward

The mobile café is at other locations around the community several days each week. Heart-n-Soul is committed to addressing food insecurities, building communities, and providing nutritious food to nurture body, heart, and soul.

[www.heartnsoulcafe.com](http://www.heartnsoulcafe.com) also on Facebook!

**Who can volunteer?** You! We need 2 or more volunteers each session. This is perfect for a parent and teen or responsible pre-teen or maybe two adults. Come before 4 to set up and help to clean up afterwards. Support and welcome the friendly food trailer folks as they set up. We set up tables, welcome visitors, sit and visit with folks. We're done by about 7:00. Sign up will be on the entry table.

### SPONSOR-A-STUDENT

With school just a few weeks away, YWCA is making plans for their Sponsor-A-Student Program which is to help students return to school in style. We took part last year in this program with an overwhelming response from Peace members. This year we would like to provide new outfits for two students calling YWCA home. Included with the outfits would be other necessities of socks, shoes, and under garments. What a great way to bring joy to these children returning to school. As soon as we receive the information for these children, tags and a collection box will be set up. Monetary donations would also be appreciated and can be dropped off at the church office. Thank you for supporting this mission.

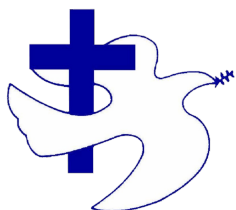


July 23 Heart-n-Soul Café



July 5 Micah's Mission





## Please & Thank you

## memorials & gifts

### GIVING OPTIONS

To conveniently give by text, send a text to 888-910-2311 with the dollar amount you wish to give \$0.00, followed by where you want to direct the gift,

**Gen** for General Fund

**Ben** for Benevolence Fund

**Bld** for Building Fund

**Food** for Food Shelf

**ELCA** for ELCA World Hunger

**Justice** for Peace & Justice

**Flowers** for Flowers for the Sanctuary

**TNC** The Neighborhood Church

**THX** Thanksgiving

**Xmas** Christmas

**Youth** Youth Trip

**Kitchen** Kitchen Remodeling Project

**GOG** Gift of Giving

If it is your first time you will be directed to a link to enter in your account information, I recommend a credit card for maximum security. Following setup you will receive a text acknowledging your gift, there will be some additional instruction should you want to make this a recurring gift, or if you made an error to "refund" your gift (cancel the gift). The offering secretary will also get an e-mail to record your offering.

You can also give electronically through our web site [www.fargopeace.org](http://www.fargopeace.org). Click on the "Make an Offering" to set up an account on the secure Vanco website. Again the first time you will need to create a profile with your name, address, password, and account information. Again, I recommend a credit card for maximum security. When you make donations on this site you will receive an e-mail acknowledging your gift. The offering secretary will also get an e-mail to record your offering.

### FOOD SHELF:

Our Food Shelf is looking for any breakfast/snack/granola type bars that are easy to take on the go. We need spices like black pepper and curry powder and instant potato and pasta mixes. We are happy to take your **recycled plastic grocery bag** donations to be used to bag our food shelf groceries. Please drop off your clean, regular sized bags at the food shelf during office hours or on Sunday. As always, the food shelf needs monetary donations.

### WEEDING & WATERING WEDNESDAYS

We gather to care for our beautiful church grounds and to enjoy fellowship. Come at 9:00 or any time it works for you. There's always a weed to pull or a spot that needs attention. If you have any bedding plants (flowers or veggies) we can use them! Please bring gardening tools if you have them. Thanks for your help!

### Gifts In Memory of: Dick Peterson

#### Given by:

Terry & Brenda Thompson  
Don & Lorna Pesek  
Marian Hilborn  
Mike & Jan Haugen  
Dawn Braaten Salsman  
Joan Skjonsby  
Mike & Wendy Montplaisir  
Dennis & Peggy Inglis  
Terry & Diana Hanson  
Julie Tweit  
Emily Hagen  
Muriel Hinman  
Roy & Lisa Sander  
Joyce Snyder  
Sylvan & Caroline Melroe  
Ann Braaten  
Betty Patterson  
S. Erickson  
Bill & Kay Finley  
Steve & Ruth Carnal  
Andy & Jan Fugle  
Harriet Marquardt

#### Fund:

General  
Benevolence  
Food Shelf  
Kitchen  
Kitchen  
Kitchen  
General  
Kitchen  
Kitchen  
General  
General  
General  
General  
Kitchen  
General  
General  
Kitchen  
General  
Kitchen  
Holiday Food Baskets  
Kitchen  
Churches United

### Joyce Schoenfish

#### Given by:

Vicki Gardner

#### Fund:

Kitchen

### Colleen Sandenaw (Marian Hilborn's Sister)

#### Given by:

Mike & Wendy Montplaisir  
Dawn Braaten Salsman

#### Fund:

General  
Kitchen

### Howard Barlow

#### Given by:

Bob & Arlene Peterson  
Marian Hilborn  
Steve & Ruth Carnal  
Joan Skjonsby  
Mike & Jan Haugen  
Dawn Braaten Salsman  
Pastor Ken & Cory Kirchenwitz

#### Fund:

Kitchen  
Food Shelf  
Food Shelf  
Kitchen  
Food Shelf  
Food Shelf  
Food Shelf

### Dorothy Barlow

#### Given by:

Joan Skjonsby

#### Fund:

Kitchen

### Phyllis Thurlow

#### Given by:

Bill & Kay Finley

#### Fund:

Kitchen

# AUGUST



Sunday	Monday	Tuesday	Wednesday	Thursday	Friday	Saturday
<b>27</b> 10:00am Worship 11:00am Coffee by Youth	<b>28</b> 4:00pm NDSU Music	<b>29</b> 10:00am Food Shelf 1:00pm Fold Newsletters 4:00pm NDSU Music	<b>30</b> 9:00am Weed & Water 10:00am Bible Study 4:00pm NDSU Music 8:00pm AA 12 step	<b>31</b> 3:00pm Food Shelf 4:00pm NDSU Music 7:00pm AA Recovery	<b>1</b> Office closes at noon 4:00pm NDSU Music	<b>2</b> 8:00am Serving at Micah's Mission
<b>3</b> 10:00am Worship w/Communion 11:00am Coffee by Fellowship Committee	<b>4</b>	<b>5</b> 10:00am Food Shelf	<b>6</b> 9:00am Weed & Water 10:00am Bible Study 8:00pm AA 12 step	<b>7</b> 3:00pm Food Shelf 7:00pm AA Recovery	<b>8</b> Office closes at noon	<b>9</b>
<b>10</b> 10:00am Worship 11:00am Coffee by Peace & Justice	<b>11</b>	<b>12</b> 10:00am Food Shelf 11:00am Lunch Club	<b>13</b> No card making 9:00am Weed & Water 10:00am Bible Study <b>6:30pm VBS Night</b> 8:00pm AA 12 step	<b>14</b> 3:00pm Food Shelf 7:00pm AA Recovery	<b>15</b> Office closes at noon	<b>16</b>
<b>17</b> 10:00am Worship w/Communion 11:00am Coffee by Social Ministry	<b>18</b>	<b>19</b> 10:00am Food Shelf	<b>20</b> 9:00am Weed & Water 10:00am Bible Study 4:30pm Heart-n-Soul Cafe 8:00pm AA 12 step	<b>21</b> 3:00pm Food Shelf 7:00pm AA Recovery	<b>22</b> Office closes at noon	<b>23</b>
<b>24</b> Serve Boldly presentation <b>Summer Potluck</b> 10:00am Worship 11:00am Coffee by Youth	<b>25</b>	<b>26</b> 10:00am Food Shelf	<b>27</b> 9:00am Weed & Water 10:00am Bible Study 8:00pm AA 12 step	<b>28</b> 1:00pm Fold Newsletters 3:00pm Food Shelf 7:00pm AA Recovery	<b>29</b> Office closes at noon	<b>30</b>
<b>31</b> 10:00am Worship 11:00am Coffee by Foundation	<b>1</b> <b>Labor Day</b> Office Closed	<b>2</b> 10:00am Food Shelf	<b>3</b> 10:00am Bible Study 8:00pm AA 12 step	<b>4</b> 3:00pm Food Shelf 7:00pm AA Recovery	<b>5</b> 9:30am Men's Coffee	<b>6</b> 8:00am Serving at Micah's Mission

Our on-line calendar has up-to-date changes being made through out the month. Find it here: <https://1492457.view-events.com>



# RUMMAGE SALE

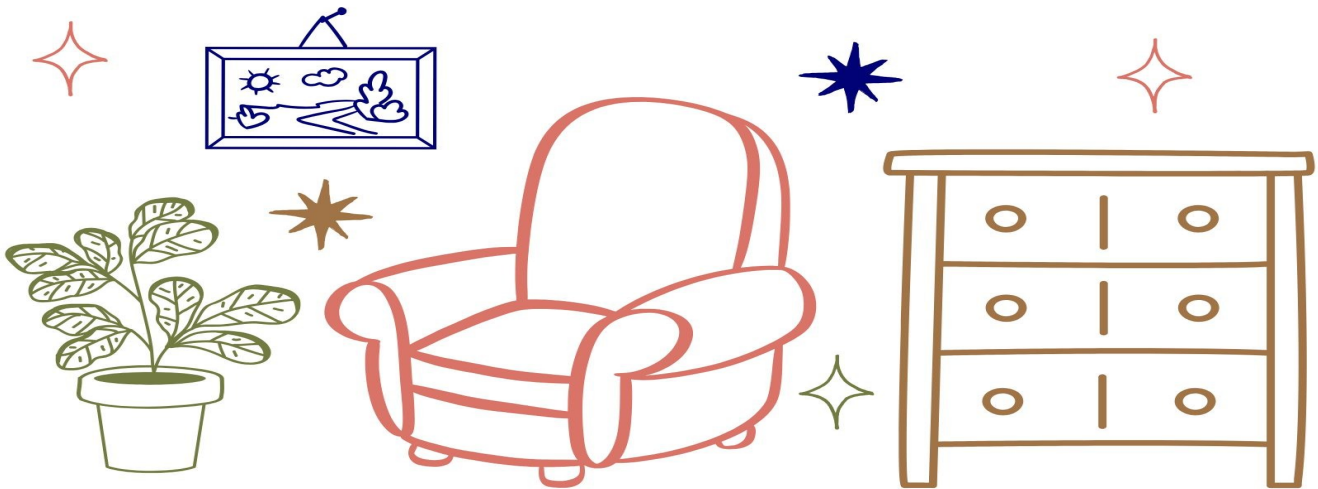
**FRIDAY, OCT 17 | 3PM – 7PM**

**SATURDAY, OCT 18 | 9AM – 1PM**

**FRIDAY, OCT 24 | 3PM – 7PM**

**SATURDAY, OCT 25 | 9AM – 1PM**

**DONATIONS WELCOMED STARTING OCT 1  
PROCEEDS BENEFIT THE KITCHEN REMODEL**



**FURNITURE | KITCHENWARE | DECOR | PLANTS | TOYS  
CLOTHES | BOOKS | ART | ACCESSORIES | SHOES**

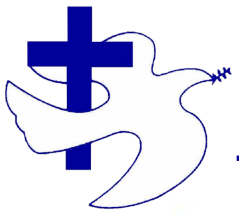
Plans are underway for the October Rummage Sale.

Your help is greatly appreciated in —

- unpacking and set-up,
- arranging merchandise,
- pricing,
- selling,
- cleanup.

Watch for a sign-up sheet coming toward the middle of September.





## Participate

---



Birthday Sunday is the first Sunday of each month.  
Are there any special birthdays in the upcoming months that you would like to celebrate? Please sign up if you would like to provide birthday cupcakes for the upcoming months.

Thank you, the Fellowship Committee

# SUMMER POTLUCK

Bring your favorite dish  
&  
enjoy great company!



24 Aug 2025

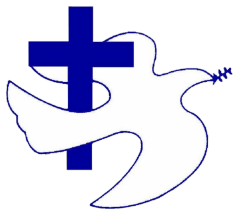


following worship



Fellowship Committee





## Pieces of Peace

---

### ALTAR GUILD

Altar Guild will have the first meeting of the fall season on Thu, Sep. 11 at noon. We meet in the lower, garden level... And let's have a potluck lunch as we make upcoming plans. Anyone is welcome to join the group.

### FOUNDATION

The purpose of the Peace Lutheran Church Foundation is to enhance the work of the church by establishing new ministries and stewardship opportunities in addition to and apart from the general operation of the congregation.

### CARD MAKING

Card making will meet

**Wednesday, Aug 13 at 1 pm**

Join us if you can. If you have used greeting cards to donate, they can be dropped off at the church during office hours. Thank you!

### LUNCH CLUB

Peace Lunch Club is a great way for members of Peace to get to know each other better. It is open to both men and women. Each month we choose a different restaurant to go to. We meet at the chosen restaurant at 11:00 on the second Tuesday of the month. We'd love to have you join us whenever you are able to!

**Tuesday, Aug 12 at 11 am**

Frying Pan 310 Mian Ave Fargo

### MICAH'S MISSION

**Saturday, Aug 2 at 8 am**

The first Saturday of the month, a group of Peace volunteers prepare and serve a brunch at Micah's Mission (formerly Churches United for the Homeless). If you would like to join us or have questions call the church office.

### MEN'S COFFEE

On pause for August, will resume in September

A gathering on the first and third Fridays for a time of fun and fellowship.

### FELLOWSHIP COMMITTEE

The Fellowship Committee serves coffee, birthday cupcakes and sandwiches on the first Sunday of each month. They work to create events in the hopes of bringing members and visitors together for a time of fellowship. Some events have included meals, community service, art projects, games, and celebrations. **They are always welcoming new members so if you have any interest please contact the church office.**

### SOCIAL MINISTRY

We serve coffee on the third Sunday of each month. We also help with Heart-n-Soul Café, Holiday Food Baskets, Benevolence donations, and much more! Let us know if you are interested in joining us at anytime.

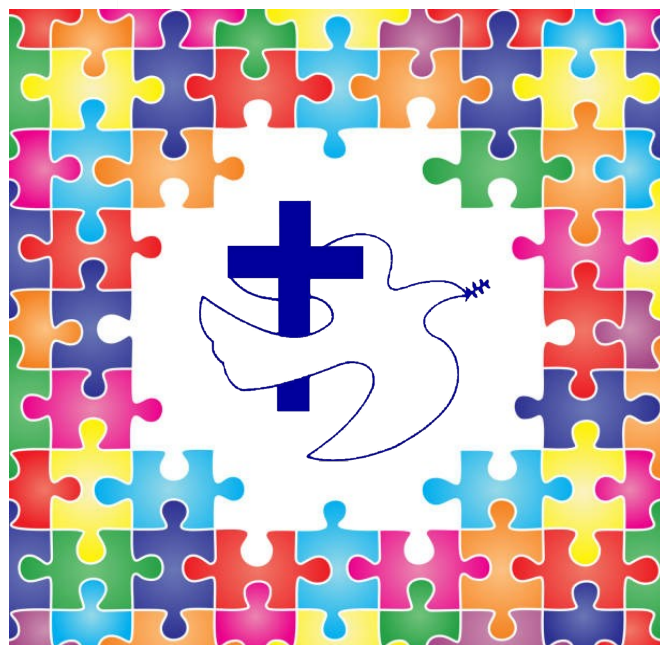
### WEEKLY BIBLE STUDY

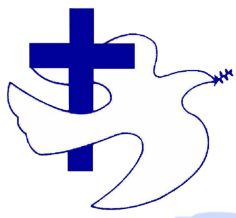
Wednesdays at 10 am gather for coffee, fellowship, and a look at the weekly lectionary text.

### PEACE CARES TEAM

Visits residents of Bethany Retirement Living  
201 S University Dr Fargo  
Training available  
Contact Paula Larsen 701-212-2421

**Join US!**





## People to Celebrate



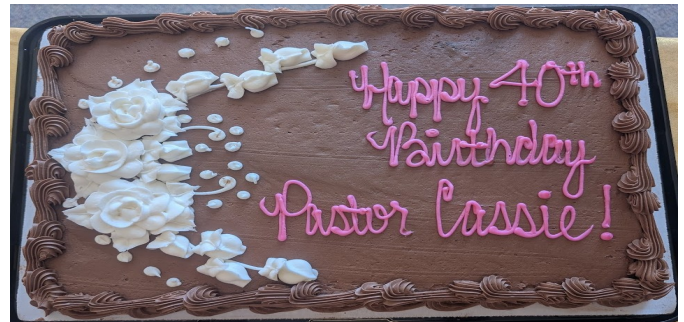
Last Month's  
Announcements

### DEATH

Dick Peterson

July 1, 2025

1 Alexander King	17 Jackson Anderson
Christi McGeorge	Barry Grant
Andrew Salsman	Jeffrey Powell
4 Ron Smithberg	Evan Salsman
6 LuLu Giere	Shane Vrem
7 Landon King	18 Heather England
Carma Sisk	Marty Lehman
8 Kay Cary	Kathy Naves
Eden Lehman	19 Kaiden Kalis
Brody Mertz	20 Jean Brekke
Wyatt Schuler	21 Patricia Berlin
Dena Walp	Patrick Hanson
9 Austin Carter	22 Kathy Ronningen
Tracy Shaw	Coltan Roquet
Riley Smith	23 Cadence Brandner
10 Christine Wold	David Mowry
13 Sue Lehman	25 Paige Brekke
14 Paula Hempel	Brian Giere
15 Tim Dahl	26 Don Pesek
Lauren Kelly	29 DeAnn Fraase
16 Layla Anderson	Betty Paulson
Andrea Jacobson	31 Larry Sisk
Joselyn Korbl	
Anna Shaw	



### Peace Lutheran Church Staff

#### Senior Pastor

Cassie Anderson

#### Visitation Pastor

Jessica Miller

#### Office Administrator

Alicia Paul

#### Accountant

Sarah Heinle

#### Financial Assistant

Susie Balsdon

#### Organist

Dr. Jean M. Hellner

#### Wedding Coordinator

Lynette Seminole

#### Custodian

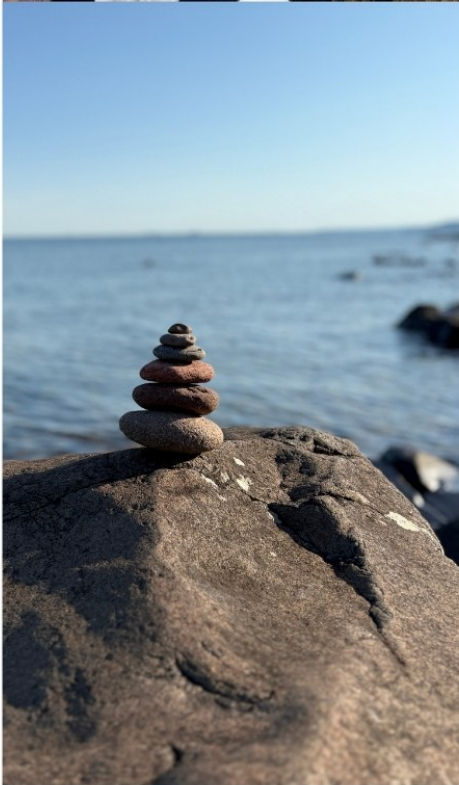
Lauren Giere

#### Custodian

Mya Giere



Jay Cooke State Park on the rainy drive home



helping cut 3,000 pounds of Rhubarb to prepare for a large fundraiser to help folks in poverty called "Rhubarb Fest". We cut 30 gallons!

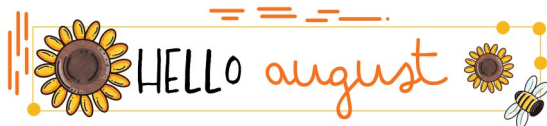


sorting donated clothes for the free store at the Damiano Center



Peace Lutheran Church  
1011 12th Ave N  
Fargo ND 58102-3527

NON-PROFIT ORG.  
U.S. POSTAGE  
PAID  
FARGO ND 58102  
PERMIT #848



### Outreach Programs-Please Join Us!

#### Food Shelf

- Tuesdays from 10am-noon
- Thursdays from 3-5:00 pm

#### Crossroads Lutheran Campus Ministry

- Preparing and serving a meal at NDSU Crossroads
- Watch calendar for dates

#### Worship & Church Information

##### Sunday

- 10:00 am Worship [www.facebook.com/fargopeace/videos](http://www.facebook.com/fargopeace/videos)  
Communion is served on the 1<sup>st</sup> & 3<sup>rd</sup> Sundays

##### Wednesday

- 6:30 pm Wednesday School (PreK 3-Grade 5)
- 6:30 pm FiF (Grade 6-7)
- 6:30 pm Confirmation (Grade 8-9)
- 6:30 pm Youth Group (Grade 6-12) 2nd Wed ea. mo.

##### Office Hours

- 9:00 am - 3:00 pm Mon-Fri

##### Contact Us

- Church Office 701-232-7166
- [www.fargopeace.org](http://www.fargopeace.org)
- [peacelutheran@fargopeace.org](mailto:peacelutheran@fargopeace.org)
- [facebook.com/fargopeace](https://www.facebook.com/fargopeace)
- [eandsynod.org](http://eandsynod.org)

#### Micah's Mission

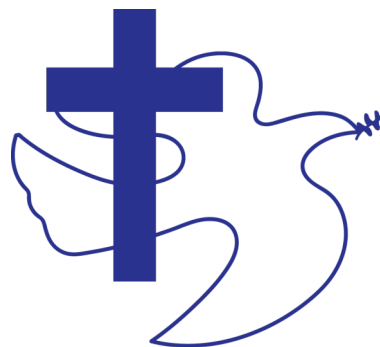
- Preparing and serving a meal
- 8:30-11:30am 1st Saturday of each month

#### The Neighborhood Church

- Preparing and serving a meal
- 6:30 pm 3rd Wednesday during school year

#### Peace Cares Team

- Visit Bethany Retirement Living residents



#### **Peace Lutheran Mission Statement**

*United in Christ we worship, share our gifts, and work for peace and justice.*