



YADKINVILLE

UNITED METHODIST CHURCH

Newsletter December 2020

Friends in Christ,

Due to the ongoing pandemic it might be tempting to ease back on your Christmas decorations since we won't be hosting in the ways we typically would. On the flip side, perhaps you are more motivated to decorate to fight the gloom of the pandemic. I am not going to tell you to definitely deck the halls; however, I will suggest that this year is an excellent time to consider why and what we decorate for.

The UM Book of Worship says this about the evergreens we use in decorating, "Because the needles of pine and fir trees appear not to die each season, the ancients saw them as signs of things that last forever. Isaiah tells us that there will be no end to the reign of the Messiah. Therefore, we hang this wreath of evergreens shaped in a circle, which itself has no end, to signify the eternal reign of Jesus, the Christ." It also says this about Christmas lights "As we prepare for the coming of Jesus, the light of the World, we light the Christmas tree. During this Advent, wherever you see a lighted Christmas tree, let it call to mind the One who brings light to our darkness, healing to our brokenness, and peace to all who receive him."



Our decorations and the mood of our seasonal homes are meant to orient us to Christ, to serve as a constant reminder of the coming birth of our Savior. In the midst of winter and pandemic our Christmas trees, lights, wreaths, candles, playlists, and other decorations remind us of the reality that Christ calls us to eternal life and brings light to the night created by sin.

As you put up your tree, lights, or other decor, I encourage you to say this prayer adapted from the Board of Discipleship. May it help you tune your heart to Christ this season.

**Make this home fragrant
with the smell of living things and our holy play.**

**As we decorate this home
and listen to the words of prophets and seers
let us make our hearts and this space
a place of inward and outward preparation
for the One
who comes to give us second birth.**

**Good Lord, by your mercy
guide the things we do
So our hearts will be filled
With faith, hope, and love.**

**May our decorations
Engage our senses during the days of Advent
And fill our praise and worship with new life
In the name of the child of Bethlehem,
our risen and coming savior, Jesus Christ. Amen.**

Grace & Peace,
Pastor Jonathan

Prayer Concerns:



Church Family: Betty Dixon, Helen Roseberry, James Roseberry, Patty Choplin, Dustin Spencer, Barbara White, Rachel Brandon, Donna Bowman, Royce & Patti Ragan, Edith Davis, Dot Gish, Barbara Stephenson, Mary Reavis, Tony Macemore, Gerald Messer, Kenneth Baity, Betty Boyette, Ginny Taylor, Gerri Reynolds, Ken Weatherman, and Julia Norman.

Friends and Family: Albert Brown, Jacob Shore, Marilyn Snow, Eidson Mulling, John Wooten, Avery Rayit, Julie Dalton, Dean Richardson, Larry and Terry Hutchens, Lois Cheek, Carol Roberts, Tony Casstevens, Danny Culpepper, Emma Swaim, Tom Alston, Renee White, Richard Byrd, Sean Bitting, Paul Eaton, Joy Prim, Chris Riddle, Carl Shore, Jr., Dave Fleming, Kevin Lineberry, Matt Imes, Cynthia Anderson family, and Clara Biswas (missionary).



United Methodist Women: The Tuesday night Circle invites all members of

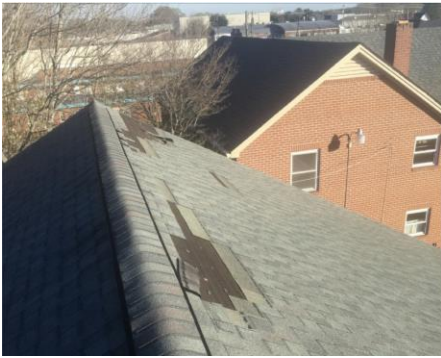


Yadkinville United Methodist Women to attend a Zoom Christmas Memories meeting on December 15 at 7:00 p.m. Each person can share for one minute a favorite Christmas Memory. Patty Choplin will have our devotional.

Everyone enjoyed hearing from Joy Prim at our October Gathering. She is doing an awesome task as a missionary in Hong Kong. Please remember to pray for Joy and, if you can, send her a card at: Joy Prim; Flat E, 10/F; Booman House; 37U Jordan Road; Ya Ma Tie Kowloon; Hong Kong SAR.

If you want to support Joy financially, make checks out to:
Advance GCFA (Include her Advance # 3021344 in memo line)
Mail to:
Advance GCFA
PO Box 9068
New York, New York 10087

Sandy Steele, President



Trustees: The roof on the Educational Building has been repaired. We are discussing upgrading the video system in the Sanctuary.



The Rotary is having a takeout only pancake breakfast next Saturday, December 5, from 7:00 a.m. until 10:00 a.m. at our church. Come and get some good pancakes and support our local projects.

Virgil Dodson, Chairperson

Opportunities to Give: The Missions Committee normally receives hundreds of dollars each year from all of you to support a mission project each month. This is not a normal year!!! This newsletter includes many opportunities to give. Information is provided about some of our ongoing projects so you can consider giving as you are able. When you give, online or by check, include the project (or projects) name on the memo line. Because of the pandemic, giving has been difficult for many and our helping agencies are struggling to serve our brothers and sisters in need.

Hands of Hope: Hands of Hope Medical Clinic is a voluntary effort of health professionals, private citizens, businesses, churches, foundations and other human service agencies that have come together as a community to provide free medical care and resources for our fellow neighbors who are sick and in need. The only requirements to be seen are you must be between the ages of 18-64, a citizen of Yadkin County, and without insurance for medical care. Tuesday clinics provide free primary medical care like what one would receive at a typical family practice office. This includes treating conditions such as diabetes, hypertension, lung disease, common infections and many other diseases/conditions. We have many on-site lab tests to aid our providers as well as an in-house pharmacy with basic medications for disease control all provided free to patients. There are over 300 active patients who visit our clinic on a regular basis. We have relationships with many other community resources to find the help our patients need. Our clinic is supported solely by donations, fundraisers, and grants.



Yadkin Christian Ministry: YCM is seeing increased need in our community. If you would like to support their ministry you can donate through the church (just indicate YCM). You can also buy some food and drop it off to YCM or contact Pastor Jonathan to arrange someone to pick the food up and deliver it to YCM. Those items which seem to always be in short supply are cereal, saltine crackers, sugar, flour, dried pintos, and canned pintos. Of course, money is always needed.

Reverse Advent Challenge: OR you can consider participating in a reverse advent celebration with your church family. Many of us did this last year. A reverse Advent focuses on giving something instead of receiving. The idea is simple. Select a sturdy basket, box, or bag and fill it with food donations for Yadkin Christian Ministry – one for every day in December. The reverse Advent encourages us to think of others as we wait to celebrate Jesus' birthday. What a great way to serve this Advent! Bring the box of food to the Commons on Sunday, December 27. The doors will be unlocked until 4:00 p.m. If that time is not convenient, check with Bobbi about when to deliver (336-679-2243). Sandy Steele will arrange to deliver the food to YCM.



The list of suggested items to collect for this Reverse Advent is on the next page.

REVERSE ADVENT CALENDAR

**EACH DAY ADD AN ITEM TO A BOX.
ON CHRISTMAS EVE DONATE THE CONTENTS TO A
FOOD BANK.**

- December 1 - box of cereal
- December 2 - peanut butter
- December 3 - stuffing mix
- December 4 - boxed potatoes
- December 5 - macaroni and cheese
- December 6 - canned fruit
- December 7 - canned tomatoes
- December 8 - canned tuna
- December 9 - dessert mix
- December 10 - jar of applesauce
- December 11 - canned sweet potatoes
- December 12 - cranberry sauce
- December 13 - canned beans
- December 14 - box of crackers
- December 15 - package of rice
- December 16 - package of oatmeal
- December 17 - package pasta
- December 18 - spaghetti sauce
- December 19 - chicken noodle soup
- December 20 - tomato soup
- December 21 - can corn
- December 22 - can mixed vegetables
- December 23 - can carrots
- December 24 - can green beans

Church Christmas Cards Available: Bobbi has available Christmas Cards that can be used to make a contribution to the Church in honor or in memory of someone for Christmas. Call or email Bobbi and she will send cards to you. You will make your contribution and mail the card. Or, make the contribution and Bobbi will mail the card for you.

Angel Tree: This year we are sponsoring a few families from our community for Christmas. If you would like to contribute to helping buy Christmas presents, you can contribute online. Use the "Other" section and write in Christmas. You can also mail a check to the church (PO Box 25).

Update From the Project AGAPE Board: Most of you have heard of the hardships that the people of the Republic of Artsakh and Armenia are going through at this time after several weeks of fighting with Azerbaijan. So much of the land that was once governed by Artsakh will now be governed by Azerbaijan. And no one knows for sure how the area will look until a peace treaty has been worked through and signed.



Project AGAPE has been involved in Armenia and Artsakh for over 26 years. We have helped with humanitarian aid (clothing, cloth for sewing, school supplies, etc.) wells for small towns, schools, children's homes, rebuilding homes for families and schools for communities, as well as an agriculture development project to help families have a sustainable living. All of this changed on September 27. We are now in the process of moving all of our supplies that are in Berdzor (humanitarian aid, health kits, furniture, etc.) to a warehouse in Goris, Armenia. Once this is complete in the next week or two, Nara Melkonyan, Director, will begin distributing humanitarian aid and other supplies that the refugee families need. It is estimated that over 100,000 people will be displaced by this war and in possible need of help. Project AGAPE, over the next 3 to 4 months, will focus on providing this aid to families that no longer have a place to live. Your help to make this happen will be greatly appreciated as we make a difference in the lives of the people of Armenia and Artsakh. You can make a contribution to the church and write Agape on the memo line.

Year-End Giving:

Your IRA/401(k) Required Minimum Distribution – How to Make the Most of It: Per the IRS, people 70-1/2 and older are required to take a minimum distribution from their IRA/401(k) annually or be faced with a hefty tax penalty. If you must take a required minimum distribution, but don't need the funds and don't want to pay income taxes on it, please consider gifting it to the Church as part of your annual support.

To qualify for the tax credit, you must have your retirement plan administrator direct the distribution DIRECTLY to Yadkinville UMC; it cannot pass through your hands or it will trigger an income taxable event for you. Once received DIRECTLY, the Church will give you credit for the total gift.

If you have questions about how to execute this gift transaction, please contact either your plan administrator, Bobbi Reavis, or Emmitte Winslow for guidance/advice.



Contributing Stock:

During the fall and into winter, many folks are thinking of contributing stocks to their church. The United Methodist Foundation of Western North Carolina will broker those stocks for us without a fee. If this is of interest to you, please contact Emmitte Winslow (ewinslow@briggsbeams.com) or Bobbi Reavis (bobbi@yadkinvilleumc.org) for details. **It takes 2-3 weeks to get this done and the transaction must be complete by Dec. 31 to count as giving for 2019.**

Finance Committee

The Calendar for Morning Prayer
 With the Table of Lessons.
 December hath xxx. Days

	Psalm	OT	NT
December 1	1,2,3,4,5	1 Chron 21	Acts 7
December 2	9,10,11	1 Chron 23	Acts 8
December 3	15,16,17	1 Chron 25	Acts 9
December 4	19,20,21,	1 Chron 27	Acts 10
December 5	24,25,26	1 Chron 29	Acts 11
December 6	30,31,	2 Chron 2	Acts 12
December 7	35,36	2 Chron 4	Acts 13
December 8	38,39,40	2 Chron 6	Acts 14
December 9	44,45,46	2 Chron 8	Acts 15
December 10	50,51,52	2 Chron 10	Acts 16
December 11	56,57,58	2 Chron 12	Acts 17
December 12	62,63,64	2 Chron 14	Acts 18
December 13	68	2 Chron 16	Acts 19
December 14	71,72,	2 Chron 18	Acts 20
December 15	75,76,77	2 Chron 20	Acts 21
December 16	79,80,81	2 Chron 22	Acts 22
December 17	86,87,88	2 Chron 24	Acts 23
December 18	90,91,92	2 Chron 26	Acts 24
December 19	95,96,97	2 Chron 28	Acts 25
December 20	102,103	2 Chron 30	Acts 26
December 21	105	2 Chron 32	Acts 27
December 22	107	2 Chron 34	Acts 28
December 23	110, 111,112,113	2 Chron 36	Jude
Christmas Eve	89:1-29	Isaiah 9:2-7	Titus 2:11-14
Christmas Day	2,85	Isaiah 52:7-20	Heb. 1:1-4
December 26	119:105-144	2 Chron 24:17-22	Acts 6:1-7
December 27	120,121,122,123,124	Prov. 8:22-30	John 13:20-35
Holy Innocents	2,26	Isa. 49:13-25	Matthew 18:1-14
December 29	139,140	Isa. 12:1-6	John 7:37-52
December 30	144,145,146	Isa. 25:1-9	John 7:53-8:11
December 31	144,145,146	Isa. 26:1-9	John 16:25-30

The Calendar for Evening Prayer

53

With the Table of Lessons.

December hath xxx. Days

	Psalm	OT	NT
December 1	6,7,8	1 Chron 22	Heb 7
December 2	12,13,14	1 Chron 24	Heb 8
December 3	18	1 Chron 26	Heb 9
December 4	22,23	1 Chron 28	Heb 10
December 5	27,28,29	2 Chron 1	Heb 11
December 6	32,33, 34,	2 Chron 3	Heb 12
December 7	37	2 Chron 5	Heb 13
December 8	41,42,43	2 Chron 7	James 1
December 9	47,48,49	2 Chron 9	James 2
December 10	53,54,55,	2 Chron 11	James 3
December 11	59,60,61	2 Chron 13	James 4
December 12	65,66,67	2 Chron 15	James 5
December 13	69,70	2 Chron 17	1 Peter 1
December 14	73,74	2 Chron 19	1 Peter 2
December 15	78,	2 Chron 21	1 Peter 3
December 16	82,83,84,85	2 Chron 23	1 Peter 4
December 17	89	2 Chron 25	1 Peter 5
December 18	93,94	2 Chron 27	2 Peter 1
December 19	98,99,100,101	2 Chron 29	2 Peter 2
December 20	104	2 Chron 31	2 Peter 3
December 21	106	2 Chron 33	1 John 1
December 22	108, 109	2 Chron 35	1 John 2
December 23	114,115	Isaiah 35:1-10	1 John 3
Christmas Eve	96	Isaiah 59:15-21	Luke 2:1-20
Christmas Day	98	Zech 2:10-13	John 1:1-14
December 26	119: 145-176	Micah 4:1-5; 5:2-4	1 John 4
December 27	126,127,128,129,130,131	Isa. 44:1-8	1 John 5
Holly Innocents	19, 126	Isaiah 54:1-13	Mark 10:13-16
December 29	141,142,143	2 Samuel 23: 13-17	2 John
December 30	147,148,149,150	1 Kings 17:17-24	3 John
December 31	147,148,149,150	1 Kings 3:5-14	John 4:46-54

Those Serving You

Rev. Jonathan Gaylord, Pastor, pastor@yadkinvilleumc.org, 336-679-2243

Dr. James Sheek, Choir Director, jamessheek@triad.rr.com

Charlene Zachary, Pianist/Organist

Bobbi Reavis, Church Office Administrator Assistant, bobbi@yadkinvilleumc.org

204 West Main Street, PO Box 25, Yadkinville, NC 27055, **Website:** www.yadkinvilleumc.org.

Church Office: 336-679-2243, **Hours:** Monday - Thursday 9:00 a.m. - 1:00 p.m. Closed on Fridays.



Copies of the Newsletter are available in the Commons and it is on our website: www.yadkinvilleumc.org.

News is due to mildredcarter@earthlink.net or 336-679-8034 by the 25th of each month.



CHRISTMAS IS THE CELEBRATION OF THE BIRTH OF JESUS, THE SAVIOUR OF MANKIND

Mission Statement: *Offering care and hope through living, learning, and loving God and each other.*

