



# ANNUAL REPORT 2022-2023





**PASTOR/HEAD OF STAFF**  
Rev. Dr. Christine Chakoian

**EXECUTIVE ASSOCIATE  
PASTOR**  
Rev. Paula Mann

**PASTOR OF MISSION,  
OUTREACH, & PASTORAL  
CARE**  
Rev. Mark Jones,

#### **WORSHIP**

Ja' Michael Davis-Hoag,  
*Sunday Receptionist*  
Paul Workman,  
*Sound & Lighting Engineer*  
Gabor Lukin, *Organist (August  
2022—January 2023)*  
Laurel Sanders, *Organist  
(February 2023—)*  
Dan Redfeld, *Director of Music*

#### **LEADERSHIP**

Anne Cioffi, *Coordinator of  
Membership & Lay Ministries*  
Sarah Ilger, *Director of  
Operations (July—October  
2022, May, 2023—)*  
JJ Hickey, *Interim Director of  
Operations (November 2022—  
May 2023)*  
Farrah Mikail,  
*Financial Manager*  
Brianne Naiman,  
*Preschool Director*  
Jessica Place,  
*Director of Children & Family  
Ministries*  
Jake Putich,  
*Director of Youth, College, &  
Adult Faith Formation*

#### **SUPPORT**

Priscilla Glaza,  
*Preschool Administrative  
Assistant*  
Heidi Rudd,  
*Preschool Office Manager*  
Jacquelin Schofield,  
*Administrative Assistant  
(July 2022—May 2023)*  
Javier Torres, *Maintenance*  
Lourdes Torres, *Custodial*  
Joshua Torres, *Custodial*

## DEAR WPC MEMBERS AND FRIENDS,

This was a very special year for Westwood Presbyterian Church: a year to celebrate the past, savor the present, and imagine the future God is calling us to.

Looking back, we honored our heritage when we celebrated our 75th anniversary in November: “Remembering, Rejoicing, Renewing.” We gave thanks for the strong foundation we stand on: the deep commitment to welcome everyone, the value of lifelong learning and growth, and our passion for mission in the world. The pictures on the cover of our Annual Report capture just a taste of the joy. We welcomed back former members, pastors, staff and loved ones; mission partners and Presbytery representatives. We cherished our time together in worship, followed by a luncheon at the UCLA Faculty Club. A huge thanks to our committee:

*Martha Kadue, chair, along with Claudia Carver-Samuels,  
Betty Glick, Peter Helm, Lou Moore, and Rebekah VanderStoep.*

Throughout the year, we savored our time together. On the heels of our COVID lock-down, we no longer took for granted the simple joy of being present with each other. Our stewardship theme this year was spot-on: “God’s House, Our Home: Faith, Family, Friends.” Worship and music felt so inspiring; education experiences challenging and engaging; mission opportunities intentional and meaningful. We cherished fellowship together, at Monday Nighters, our softball games, retreats. And we delighted in reviving precious traditions like Music at Westwood and a Confirmation class.

And, again and again, we dedicated ourselves to imagining God’s calling for our future. Building on the work of our Discernment Task Force, the Vision and Planning Committee pointed us toward refreshment and collaboration in light of our “post-COVID weariness.” Mission & Outreach committed us to be a “Matthew 25 Congregation” alongside other Presbyterian churches. Our Property Development Commission kept pressing ahead in the face of some external opposition. And in all of our ministries, we opened ourselves to the joy of possibility, as we welcomed a growing number of children and youth, college students and young adults, visitors and members from far and wide.

God is good! And I have no doubt that Christ is taking us by the hand, leading us to the future where we are meant to be.

*- Rev. Dr. Christine Chakoian  
Pastor/Head of Staff*

## DEAR WPC MEMBERS AND FRIENDS,

The past year has been one of learning; learning how WPC ministers to its faithful community and the neighborhood and beyond, learning how processes and procedures are followed; learning how members, staff, and friends interact to be the hands and feet of Jesus. I am so grateful for the past year and being part of this community of faith. It is wonderful to see how the Spirit moves among us and inspires us to be faithful followers of Jesus Christ.

I have the privilege of staffing the Finance Committee, the Personnel Committee, the Vision & Planning Committee, and the Administrative Commission working on the Belmont Village project. Those who are on these committees give much time and energy to discern God's call. Please take time to read their reports of the wonderful work done in the past year. While some of the committees might be working more behind the scenes, the work they do keeps the WPC community of faith moving smoothly.

Chronos and Kairos are two Greek words about time. Chronos is about the passage of time. It is a challenge to try to control it. And how often do we want to do that. Kairos is an ancient Greek word meaning the right time or the opportune time. One of the greatest challenges for me in the work of the church is being patient and following God's time (Kairos) rather than my own (chronos). The committees I staff all know that the time needed to get to a good decision takes time and discernment (and sometimes lots of discussion and debate). When the members of the committee and the WPC community share honestly and listen with their hearts, wonderful work is accomplished.

I look forward to the coming year of opportune times for exciting things to unfold with God's guidance as we discern how best to serve God's people in this place and around the world.

*-Rev. Paula Mann  
Executive Associate Pastor*



**Executive Associate  
Pastor**  
Rev. Paula Mann



## DEAR WPC MEMBERS AND FRIENDS,

The past year, the second in a slow personal recovery, has been one I thank God for the unparalleled support of my wife, Romana, our family, and our WPC family and friends, all for which we will be eternally grateful.

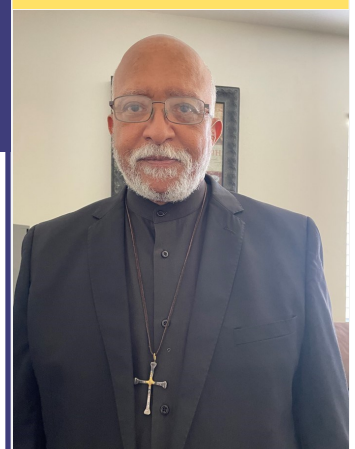
Despite the cloud of unsettling and unpredictable constraints and challenges imposed by more than two years of a relentless pandemic, I witnessed several silver linings. The adjustment to hybrid meetings, rather than becoming a barrier to effective ministry, actually resulted in a more efficient use of time (less commuting, increased attendance at meetings, etc.). That in turn led to greater input of ideas and recommendations in caring for; members of the congregation, particularly through the service of our faithful deacons; our sisters and brothers who are homeless and/or in need who come seeking much needed assistance; and increasing our network of supportive service agencies that have the resources and expertise to assist people in need.

As the 2022-23 fiscal year was moving toward its close, the resilience of the little church that HAS and DOES, for me, became increasingly apparent. The challenges that would have impeded the progress of many churches seemed to only magnify the resolve of the members of the Board of Deacons (BoD) and the Mission & Outreach (M&O) Committee. The vow to serve with energy, intelligence, imagination and love was extended beyond the ordered ministry of Deacons and Elders to ignite and increase the spirit of collaboration not only between the Board, Session, & Committees, but in increasing engagement among and participation of the members of WPC Family. This participation will be our focus moving forward to the benefit of the congregation and the larger community. God has blessed me and us all with a spirit-filled and faithful BoD and M&O Committee I am privileged to serve as staff support.

I cannot say enough about Pastor Chris and Pastor Paula as colleagues in Christ. God knew exactly who to call to shepherd the WPC Family of Faith! I am also especially grateful for the incredible WPC Staff, a Team second to none!

Looking ahead to the coming year, an increased focus on living out WPC's commitment as a Matthew 25 Congregation and helping to highlight how the mission and ministry of our church carries out that commitment in tangible ways. We will be seeking interested writers from among you who are able to capture in 250 word, stories that describe what we do that unmistakably reflects the essence of Matthew 25 to share with the rest of the PC(USA). Stay tuned . . . more to come!

*In Christ's service and yours ~ Pastor Mark*

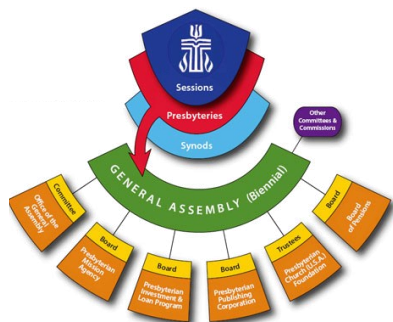


**Pastor of Mission,  
Outreach, & Pastoral  
Care**  
Rev. Mark S. Jones, Sr.





# SESSION



The governing constitution of the Presbyterian Church (USA) holds the Session responsible for guiding and governing the life of the congregation. The Session leads the congregation in fulfilling its responsibilities for the service of all people, for the up-building of the whole church, and for the glory of God. In the fall of 2022, the Session continued to guide the church toward a full reopening after the COVID-19 pandemic, led by Rose Helm and the COVID Response Task Force. The church

celebrated a full return to worship and fellowship together with the 75th Anniversary Celebration in November, an event which brought together hundreds of current and former members and pastors in a celebration of God's work in our church.

This past year, the Session supported the efforts of the many committees that do the work of keeping Westwood Presbyterian Church a vibrant Christian community. We were delighted to approve Personnel Committee's decision to hire J.J. Hickey as a temporary replacement for Sarah Ilger as Director of Operations, and equally delighted to celebrate Sarah's return to WPC and welcome Linda Martinez as Administrative Assistant and Contributions Coordinator. The Session also supported the work of Finance Committee in producing a budget during challenging financial times, the Deacons work within the church, Mission & Outreach Committee representing the church in the community and the world, and all of the other committees that create programming for all ages at WPC.

In the Spring of 2023, the Session met with the entire staff of WPC led by Jann Williams, Caryl Carothers, and the Vision & Planning Committee. We heard the results of the committee's engagement with the congregation and leadership of the church and prayerfully considered changes to the structure of the church to realize the collective vision of the church moving forward.

We learned that the congregation values the mission, fellowship, and educational opportunities that the church provides, but sometimes feels burnt out by committee work and decided to adjust our committee structure to allow for more flexible lengths of terms and for members to join committees for particular projects. We also learned about the need for better coordination between areas of the church and decided that Pre-School Committee would become a part of Children & Family Ministries, which would more closely coordinate with Student Ministries and that Spiritual Formation and Adult Education Committees would work together more closely in the future. Further, Membership Committee was renamed Membership & Fellowship Committee to reflect the desire for more fellowship activities and the Administrative Commission was renamed the Building Commission buildings and property were added to their crucial work involving the upcoming building project.

As we look forward to the upcoming year, the Session continues to value the sacred responsibilities entrusted to us by the membership of the church and looks forward to further serving God and His church.

- *Graham Beattie, Clerk of Session*

The Presbyterian Church (USA) Book of Order charges, “The Session shall have responsibility for governing the congregation and guiding its witness to the sovereign activity of God in the world, so that the congregation is and becomes a community of faith, hope, love, and witness.” [G-3.0201]



**Moderator:**

Rev. Dr. Christine Chakoian

## Ministers of the Word and Sacrament:

Rev. Paula Mann  
Rev. Mark S. Jones, Sr.

Ruling Elders:

Carlton Bailey  
Graham Beattie (Clerk)  
Elizabeth Evans  
Lisa Goalen  
David Hartle  
M.C. Haslett  
Steve Hauser  
Rose Helm  
Con Howe  
Martha Kadue  
Brooke Larson  
Connie Price  
Emma Puglia

(January–June 2023)

Keith Samuels  
Kelly Sheridan  
Lou Moore Singleton  
Jann Williams



*"The ministry of deacon as set forth in scripture is one of compassion, witness, and service, sharing in the redeeming love of Jesus Christ..."*

*It is the duty of deacons, first of all, to minister to those who are in need, to the sick, to the friendless, and to any who may be in distress both within and beyond the community of faith."*

*– Book of Order*

#### Moderators:

Kelly Sheridan, Elder  
Heather Leatherwood,  
Co-Moderator

#### Deacons:

Kate Branaman  
Madrona Casey  
Lara Fedoroff  
Kevin Glynn  
David Hartle,  
(liaison with Mission &  
Outreach Committee)  
Peumi Jayyasuriya  
Patricia Kurtz  
Scott McDowell  
Matheus Oliveira  
Kitty Sankey  
Nancy Munn Smith  
Cynthia Trangsrud  
Rebekah VanderStoep

#### Staff Resources

Rev. Mark S. Jones, Sr.  
Rev. Dr. Christine Chakoian



## BOARD OF DEACONS



Earth Day,

There are many times where we see God at work through the Deacon board. Communion is a main example. We brought Home Communion back this year after a three-year absence. It was wonderful to go out and serve those who are homebound and/or cannot attend services for various reasons. It is an honor to bring this important event to those who miss out otherwise. Additionally, this year we went back to the traditional Communion service in church and stopped handing out the kits. This has been rewarding and also gets Deacons back together for a more intensive set up and its special Deacon bonding time.

Next, we continued to check in on the congregation of members and friends via visits, conversations, calls, and cards. A big portion of this is through the flower delivery. Each Sunday, Deacons deliver one bouquet of flowers and ensure that the second in the chancel is given to someone in attendance in the worship service. We also deliver lilies at Easter and poinsettias at Christmas. A special part of the lilies and poinsettias ministry is the Imaginary Lilies and Poinsettias campaign that raises pastoral care funds for those in need. We also check in on those in attendance at services by hosting at the door after services. Deacon Sunday was a big hit again this year and gave us a chance to promote our ministry.

We continue to work on strengthening our bonds with the congregation so we can help the members when it is needed. We need to keep building our relationship with communication and outreach as we know it is important and appreciated. In particular, once we brought Home Communion back, we learned that we need to be physically with those who need us as much as we are reasonably able and is appropriate to their condition. Just like last year, Deacons must continue to grow and be flexible in how we reach out and keep people connected. We will also continue to be open to events involving collaboration with other committees as this helps the congregation in general as well as the committees involved. Additionally, we continue to learn we should stay open to new possibilities for growing our ministry and listen to those who provide input.

*- Kelly Sheridan, Chair of the Board of Deacons*





*The Adult Education Committee offers education and feeds the life of the mind, providing regular and periodic opportunities for Christian learning that bring faith to bear on contemporary issues.*

**Committee Chair**  
Elder Carlton Bailey

**Committee:**  
DeAnne Crossley  
Matthew Gallant  
Abraham T. H. Kim  
Patricia Kurtz  
James Louie  
Doug Van Sickle

**Staff Resource**  
Jake Putich



## ADULT EDUCATION

In ways both grand and small, this year the Adult Education Committee sought to expand our minds and hearts to love God and to love the world. We enjoyed fantastic guest speakers during our Faith Conversation events covering everything from gun violence and climate change, to poetry, gardening, and art. Our knowledge of scripture was broadened during Adult Bible Forum classes, and our faith was revitalized by open inquiry in Faith, Search, & Support classes. We heard presentations from our mission partners at Esperanza Elementary and Westside Food Bank, reminders of the larger work of compassion and justice into which WPC is enfolded.

We even took field trips! We learned about the lives, cultures, and struggles of our Asian-American neighbors at the Japanese-American National Museum, and our hearts were drawn toward the needs of the earth at the UCLA Botanical Garden. We participated deeply in the first ever Pride celebration at WPC, hosting wise and sensitive speakers to guide us in extending compassion and justice to the LGBTQ+ community. Learning is the seed of faithful action, and through each conversation and event we were drawn into the eternal wisdom of Jesus: to live a life of faith is to love God and to love our neighbors.

In the year ahead, we aim to increase the quality and consistency of our programs by collaborating more deeply with other WPC committees, providing a forum for a broader spectrum of topics refracted through the lens of faith. We are delighted that WPC is a place where we can cultivate our minds and hearts as we seek to live a vibrant life of faith together. May the year ahead draw us all into a faith that is at once compassionate, dynamic, and alive.

*- Carlton Bailey, Adult Education Committee Chair*

### Some of our Faith Conversations Speakers this Year



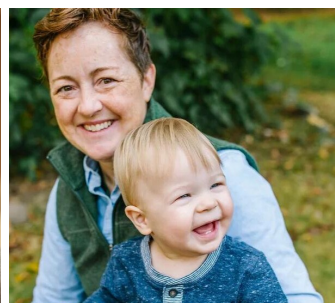
Daniel Sherrill,  
Climate Change,  
Faith  
Communities, and  
the Nature of Hope.



Rev. Deanna Hollis,  
Gun Violence  
Prevention



Dr. Holly Hearon,  
Reading Scripture  
through Queer Eyes



Rev. Lisa Page,  
The LGBTQ+ community  
and Faith Communities

*The Children and Family Ministries Committee carries out the church's commitment, made in the vows of baptism, to assist parents in raising their children to a deep and loving relationship with Jesus Christ, by providing infant through elementary school age children opportunities to grow in faith.*

**Committee Chair**  
Elder Brooke Larson

**Committee:**  
Hugh Burton  
Stephanie Covington  
Breen Frazier  
Andrew Kim  
Jane Kinsey  
John Langfitt  
Camille Morris

**Staff Resource**  
Jessica Place

## CHILDREN & FAMILY MINISTRIES (CFM)



Children's Choir director, and of course parents and grandparents to young children. This eclectic group of God's orchestration brings so many perspectives of the church to help us to carry out our role in enhancing the spiritual growth of our children.

We've adapted our program activities from Wednesdays at Westwood to Friday Nighters, and Vacation Bible School to Adventure Quest, both of which have been huge successes, as well as more collaborations with the Mission & Outreach, and others!

We began to hear more of the Vision and Planning

Committee's idea to combine CFM with Student Ministries and Preschool Committees for this coming year. Given the robust agendas and different developmental needs of each of the groups, we ultimately decided to not combine the three but to fold Preschool into CFM and meet more regularly with the Student Ministries to discuss collaborations. We have seen that formal collaborations with the Preschool will benefit the church community and the Preschool, as well as assure continued advocacy for the delicate and necessary mission of the Preschool. Likewise, working more closely with the Student Ministries will create a greater spiritual outcome for our children and youth and encourage more definition in the pedagogical differentiation of the two audiences.

We have also had to adapt to a changing audience as many of our children this past year graduated to Student Ministries. But as one group moved up, an entirely new group of younger children have come to join our CFM programs. Thanks be to God!

- Brooke Larson, Children & Family Ministries Committee Chair





*CYAM exists to provide a sanctuary for college students and young adults on the Westside. We desire to create a space for curiosity and connection, where faith can bloom into acts of justice, love, humility, and peace for the sake of our neighbors and our world.*

**Committee Chair**  
Elder Emma Puglia

**Committee:**  
Jim Louie  
Anne Mathews  
Scott McDowell  
Emilie Nordhues  
Gabby Price  
Theresa Stewart

**Staff Resource**  
Jake Putich

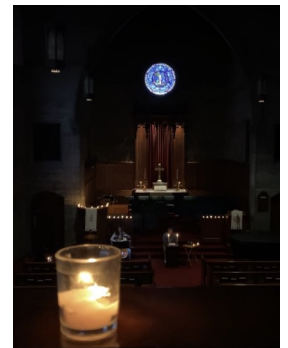
## COLLEGE & YOUNG ADULT



Through God's guidance, the College and Young Adult (CYAM) Committee has opened up meaningful conversations and shared connection throughout the growing Ember group. It's been absolutely beautiful seeing the heartfelt stories shared and the openness to learning more about our faith

and purpose. The committee has not been scared to create tough questions to pose to Ember about free will, divine intervention, the text of the Bible itself, and it only serves to deepen our understanding about God, which we are eternally grateful for.

Additionally, it's because God has created such a safe space that new members feel comfortable in our community. It's during our contemplative sessions of silent prayer that we are allowed a moment of respite during busy lives of work or studying. It's during shared lunches or dinners that we are able to expand friendships, deepen connections, and find moments of empathy amongst one another, all under the loving hand of God.



The CYAM committee has learned, on a silly note, that students LOVE free food — they say that the way to someone's heart is through their stomach!

But in all seriousness, we've learned that spreading the word about God's community in the young adult world is at its strongest through word of mouth. Friends bringing friends, partners bringing partners; it's how we've continued building our tight-knit group, even as individuals come and go due to life events such as graduating, getting a job, etc. We've learned to cherish the moments we share together, as this is a group that undergoes a great deal of natural turnover, and not take them for granted. In turn, we've been able to lean on something special, a steadiness in God's unwavering love that keeps the group grounded and never changes.

*- Emma Puglia, College & Young Adult Committee Chair*



*The Finance Committee establishes and oversees the church budget, ensuring careful, transparent management of all church funds and investments.*

**Committee Chair**

Elder Elizabeth Evans

**Committee:**

Graham Beattie  
Mundi Fomukong  
Betty Glick  
Genevieve Gonzalez-Turner  
David Kadue  
Mary Pringle

**Investment**

**Sub-Committee:**

Matt Covington  
Elizabeth Evans  
Freeman Hall  
Don Morrison  
Todd Popovich

**Staff Resources**

Rev. Dr. Christine Chakoian  
Rev. Paula Mann  
Farrah Mikail

## FINANCE

One of the privileges of being part of the Finance Committee is the ability to observe and appreciate all the different parts that make up WPC. As we try to balance the needs of various committees, commissions, and staff, and to ensure as much as possible that all needs are met, we learn the good work being done by everyone who comprises the community of WPC. This year in particular, we were impressed with the willingness of various committees to give up resources so that other committees might have more.

Since most of the members have been on the Finance Committee for some time, I would say that we have refined (rather than learned) how to disagree at the beginning, but by the end of our decision-making process, we converge upon a solution. We know how to deal with changes in direction also. For example, our Committee members may have very different opinions and perspectives. But we use that to better analyze the problems and issues that we face. Everyone has a voice and all opinions are heard.

*- Elizabeth Evans, Finance Committee Chair*

The WPC Budget is available on the next page.

Detailed financial reports are always available for WPC Members. Please contact the church office at [office@westwoodpres.org](mailto:office@westwoodpres.org) or (310) 474-4535.





# WPC OPERATING BUDGET: SOURCES AND USES OF FUNDS

	2019-2020 Fiscal Year Budget	2019-2020 Fiscal Year Actuals	2020-2021 Fiscal Year Budget	2020-2021 Fiscal Year Actuals	2021-2022 Fiscal Year Budget	2021-2022 Fiscal Year Actuals	2022-2023 Fiscal Year Budget	2022-2023 Fiscal Year Actuals	2023-2024 Fiscal Year Budget
<b>Income</b>									
Pledge/Non-Pledge	725,000	679,797	700,000	701,085	700,000	709,760	725,000	734,996	725,000
Other Income	21,500	70,745	20,000	7,875	11,000	11,867	11,000	7,298	10,000
Fund Income	99,631	155,423	120,000	145,980	120,000	181,691	155,000	206,697	200,000
Preschool (1)	191,000	24,777	84,950	245,295	55,500	522,113	154,948	302,730	146,095
Church Rental Income	36,500	14,944	170,500	153,280	160,250	9,075	11,000	33,890	11,000
Property-Ashton House	61,760	51,009	33,835	47,329	23,728	66,822	51,330	51,330	51,348
Manse Rental Income	52,500	50,697	55,500	56,953	57,268	58,539	57,700	55,862	56,190
Belmont Income	-	-	-	-	-	150,000	150,000	150,000	150,000
<b>Total Income</b>	<b>1,187,891</b>	<b>1,047,393</b>	<b>1,184,785</b>	<b>1,357,796</b>	<b>1,127,746</b>	<b>1,709,865</b>	1,315,978	1,542,804	1,349,633
<b>Expenses</b>									
Personnel	715,916	649,934	680,743	672,832	744,779	720,401	747,578	762,628	813,361
Preschool Committee	200	-	200	100	200	-	200	-	-
Properties & Infrastructure	104,830	108,972	138,340	133,478	236,086	214,621	257,212	261,509	238,150
Session	11,440	11,993	13,204	12,490	12,940	13,274	15,000	15,787	15,250
Mission & Outreach	61,800	60,272	61,800	60,675	61,800	60,402	66,800	64,934	44,300
Pastoral Expenses	385,021	378,043	386,748	325,887	370,134	294,791	457,702	450,181	473,870
Administration	76,950	71,822	77,650	42,299	74,470	73,446	60,320	59,193	59,760
Pastoral Care	500	275	500	66	500	367	1,000	684	600
Membership	1,900	784	1,800	343	1,050	378	2,600	725	2,000
Nominating	-	-	-	-	-	-	150	259	150
Vision & Planning	-	-	-	-	-	543	-	-	-
Communications	1,000	-	1,000	375	500	-	500	669	3,000
Congregational Life/ Fellowship	12,200	5,680	11,700	25	5,900	3,090	15,400	11,250	15,600
Adult Ministries	9,180	4,781	8,780	1,600	7,200	3,798	6,700	6,455	6,800
Spiritual Formation Student/College/Young Adult Ministries	3,300	1,942	3,600	1,907	3,225	2,625	5,525	5,007	5,725
Children's Ministries	12,150	13,736	15,200	2,540	12,800	6,833	5,800	6,135	6,050
Music & Worship	29,500	16,480	30,950	16,506	20,800	34,569	44,350	48,739	33,850
<b>Total Expenses</b>	<b>1,430,537</b>	<b>1,326,064</b>	<b>1,436,865</b>	<b>1,273,635</b>	<b>1,556,634</b>	<b>1,432,944</b>	1,699,237	1,701,917	1,729,116
<b>Net Income/Loss</b>	<b>(242,646)</b>	<b>(278,672)</b>	<b>(252,080)</b>	<b>84,161</b>	<b>(428,888)</b>	276,922	(383,259)	(159,114)	(379,483)
<b>Contribution from Westwood Fund (2)</b>	<b>241,587</b>	<b>278,672</b>	<b>252,080</b>	-	<b>428,888</b>	(2)	<b>384,359</b>	<b>159,114</b>	<b>379,483</b>

(1) The WPC Preschool uses common services and site overhead from the church. But these costs are not allocated to the Preschool.

As a result, this line item should not be construed as the true profit of the Preschool if it were to operate as a stand-alone entity.

(2) The Session of WPC has authorized spending up to 4% of the principal of its Unrestricted Investment Fund (that is, the Westwood Fund) to support its operations. 4% of the Westwood Fund on March 31, 2022 was \$386,295.

## MEMBERSHIP & FELLOWSHIP MINISTRIES

The ministry of the Membership Committee is grounded in the belief that God created people to be in relationship with God and with one another in the community. With that in mind, we provide gracious, warm hospitality to all members and visitors, without exception. We continue this process of welcoming visitors into membership in our community of faith through regular contact with them, extending invitations to Membership Information Seminars and offering services twice a year to join the church.



2023 Confirmands

We were blessed this year to add five new members in October, 2022, and seven new members in June, 2023. We also welcomed six new members in May through Confirmation. In addition, the Membership Committee planned and hosted a New Member's reunion in March, which was enjoyed by all.

As an extension of our Committee's hospitality, we planned the annual Homecoming gathering which was well attended and appreciated by all as we were moving out of mandatory COVID masking.

This year, we have learned and are reminded that there's no way to know Christ apart from Christian community. Christ exists as community, and that is evident in all our Membership activities.



Homecoming, September 2023

- Connie Price, Membership & Fellowship Committee Chair



Homecoming, September 2023

*The Membership and Fellowship Committee assists the congregation in being a welcoming and inviting community. They welcome newcomers, provide new member seminars and walk with new members until they are established in the ministries and fellowship circles of the church.*

**Committee Chair**  
Elder Connie Price

**Committee:**  
Kate Branaman  
Stephan Ceci  
Shari Godbold

**Staff Resources**  
Anne Cioffi  
Jessica Place





*The Mission & Outreach Committee seeks social healing and extends compassion beyond our faith community, providing opportunities for our congregation to care for the poor, the hungry, and the disenfranchised as Christ has asked us to care.*

**Committee Chair**  
Elder David Hartle

**Committee:**  
James Babbin  
Ellen Caldwell  
Carole Grogan  
Scott Hartle  
Sam Jetter  
Mark Meyer  
Leslie Owens  
Ann Schloss  
Kelly Sheridan  
John Shustitzky  
Michelle Whelan

**Staff Resource**  
Rev. Mark Jones



## MISSION & OUTREACH (M&O)

God visibly at work through Mission & Outreach is seen in WPC's compassion, financial generosity, and growing interest and participation in hands-on activities. WPC's response to appeals for causes such as Presbyterian Disaster Assistance and other humanitarian needs, both national and global, is obviously Holy Spirit inspired. This report highlights ministries of M&O possible only through the generosity and participation of WPC's faith community. God continues to work through the agencies and organizations WPC was instrumental in founding:

**People Assisting the Homeless (PATH)** - intent on eradicating homelessness and providing full supportive services. Many WPC members are actively involved in PATH's ministry. Financial giving to PATH totaled \$8,160.

**FosterAll (founded as ChildShare)** - credited with placing nearly 4,000 children and youth in loving foster and adoptive families. FosterAll is now led by WPC's own Lou Moore Singleton. Financial giving to FosterAll totaled \$6,940.

**Westside Food Bank (WSFB)** - provides food for over 200,000 low-income people experiencing hunger, providing four meals for each dollar donated, including food insecure college students. Financial giving to WSFB totalled \$23,299, including the resumed side porch Hunger Offering which also provided M&O visibility and Spirit-inspired discussion about its mission and ministry.



**Habitat for Humanity of Greater Los Angeles** - has built more than 1,000 safe, affordable houses for hardworking low-income families to realize their dream of homeownership and has rehabilitated thousands more homes for families in need, with WPC volunteer builders a significant element of that partnership. Financial giving to Habitat LA totaled \$5,775.

WPC's roll-up-your-sleeves presence with **Esperanza Elementary School** had many WPC families participating in our successful, and now annual, Fall and Spring Playground mornings. Principal Brad Rumble expressed deep appreciation for WPC support that teaches 3rd graders games and provides students and their families important socialization with others beyond their tight knit community, resulting in deepening relationships.

Our **Spring Book Drive**, helped by the WPC preschool and WPC families, was a big success. A total of 32 boxes of books were collected and divided among Esperanza Elementary, PATH, and SPY (Safe Place for Youth). Food and fellowship were enjoyed with WPC members and families who organized and packed the books.

**WPC's Christmas generosity** provided more than \$30,600 for nearly 700 Christmas dinners for families in need in the LA community; a successful Gift, Grocery, & Toy Drive, gift cards, gift bags, and knit caps from WPC Knitters to FosterAll, gift cards and gift bags to SPY, and donations to the Salvation Army.

M&O, after much research, prayer and thoughtful discussion, contributed \$5000 to the **New Mexico Coalition for Reproductive Health**, a pro-faith organization that provides healthcare-related funds targeted towards underserved families.

*- continued on the next page*

## MISSION & OUTREACH (M&O)...CONTINUED

M&O continued its support of **PC(USA) World Missions**, with contributions to Mission Co-Workers Rev. Ryan and Alethia White (Berlin), Revs. Nancy and Shelvis Smith-Mather (South Sudan), Forman Christian College in Lahore Pakistan and Jerry Cans to aid women and girls in Africa in transporting water more efficiently. M&O also provided support locally to a Ukrainian refugee family displaced by the war.

Throughout the year our **Monthly Food Drive** supported the Wilshire Presbyterian Food Pantry, volunteers and monthly meals were provided to SPY's Venice location, volunteers helped host the Little Tokyo Business Assoc. annual Party for Children and Families at LA Mission, and donations were made to the LA Mission on Skid Row and Angel Interfaith Network.

All of the mission and outreach listed above was unquestionably Holy Spirit inspired and highly visible. **The total benevolence disbursed through M&O in FY 2022 - 2023 was \$153,256.00.**

M&O heard more and more that the WPC community and new members want more hands-on opportunities. This aligns with the interests of the committee and the goals it has for WPC members and friends. In order to achieve our goals, we will respond to, encourage, and provide more opportunities for those members who've voiced an interest in actual participation.

As per WPC's commitment, we are now a **Matthew 25** church, pledging with our denomination to work on building congregational vitality, dismantling structural racism and eradicating systemic poverty. M&O seeks to align our efforts more and more with those goals. This commitment is reflected by WPC as a member organization of the Westside Coalition (80 Supportive Services Providers) and as an Institutional Mission Partner of the National Black Presbyterian Caucus.

M&O will be building on this commitment, as well as the growing sense of community and collaboration among committees we have been fostering this past year, with plans for more inspiring Faith Conversations through Adult Education such as those this past year with: Esperanza Principal Brad Rumble and Art teacher Jose Ramirez (Community Building); St. Joseph's Center's Dr. Va Lecia Adams-Kellum (Racial Disparities in Service Provisions); Human Relations Commission's Marshall Wong (Hate Crimes Report); Genevieve Riutort and Crissi Avila of the Westside Food Bank (Food Insecurity).

M&O is building a year round calendar of events in order to forecast opportunities WPC members and friends can take advantage of. We will also make a regular practice of Pulpit Recaps, informing the congregation about recent M&O activities, thanking them and encouraging future participation.

M&O enjoyed the benefit of collaborating with the Deacons, Children & Family Ministries, College & Young Adult Ministries, and Adult Education, with plans for further collaboration including the addition of an M&O liaison to the Pacific Presbytery in hopes that our like-minded efforts can be even more efficient. As we look toward the new fiscal year, which includes a significant budget cut, M&O will focus on our longstanding mission partners while helping other missions as best as possible. In all things we strive to "do justice, love kindness, and walk humbly with God."

*- David Hartle, Mission & Outreach Committee Chair*



Monthly Food Drive



Esperanza Elementary



Spring Book Drive



## NOMINATING

The Nominating Committee for the program year 2022-23 relied heavily upon the first year workings of the Vision & Planning Committee. Within their deciphering, it was brought forth the possibility of joining Children & Family Ministries and Student Ministries together as well as the Adult Education and Spiritual Formation Committees joining forces. Nominating Committee continued to focus on our goal which was to encourage each and every member to use their gifts to serve in some aspect of the church's mission and ministry. All aforementioned committees have kept their individual identities and are stronger than ever. One committee has also expanded to include one huge finding from the Discernment Task Force report - more fellowship! The Membership & Fellowship Committee will now offer ways to have fun and draw our whole church community together.

The scripture reference for the Nominating Committee reads: *"Therefore, friends, select from among yourselves people of good standing, full of the Spirit and of wisdom, whom we may appoint to this task."* (Acts 6:3). We have learned that a big committee doesn't always relate to a better committee. We have learned that shorter committee terms are more desirable. We have learned that one-time service opportunities and open volunteerism may have a stronger appeal. We want to encourage all our members to get involved, participate, and give freely in their own way, on their own timeframe. However that may look to you - You are important, You are needed, You Are Enough!

- M.C. Haslett, Nominating Committee Chair

### The 2022/2023 Nominating Committee



M.C. Haslett (Chair)



Jane Kinsey



Michael Sohigian



Heather Leatherwood



Brooke Larson



Mundi Fomukong



Cami Hamilton



Scott McDowell

*The Nominating Committee serves as the church's Volunteer Resources department, inviting each member to serve in some aspect of the church's mission and ministry.*

**Committee Chair**  
Elder M.C. Haslett

**Committee:**  
Mundi Fomukong  
Cami Hamilton  
Jane Kinsey  
Brooke Larson  
Heather Leatherwood  
Scott McDowell  
Mike Sohigian

**Staff Resource**  
Rev. Dr. Christine Chakoian



*The Personnel  
Committee serves as  
the church's Human  
Resources  
Department,  
overseeing all  
aspects of  
employment, staff  
development,  
oversight and care.*

**Committee Chair**  
Elder Keith Samuels

**Committee:**  
Cathy Brown  
Terry Glennon  
Sheila Lawrence  
John Langfitt

**Staff Resource**  
Rev. Dr. Christine Chakoian  
Rev. Paula Mann



## PERSONNEL

Each of us who have had the honor of serving on the committee has experienced God's presence, influence, and guidance. His work through our committee has been evident in multiple instances. God was most especially at work returning Rev. Mark Jones to serving our WPC family. God was at work when JJ Hickey offered to assume the Director of Operations duties in November, 2022. God was at work when Sarah Ilger missed her WPC home at the same time JJ was taking his planned summer leave in May, 2023. God was at work when he brought us Jeannie Cobb to lead our choir while Dan Redfeld had a major musical directing opportunity. God was at work when he led organist, Laurel Sanders, to our church when we needed her extraordinary talents. God has most definitely been at work at WPC this past year.

The Personnel Committee has the unique and sensitive task of working with the Staff of Westwood Presbyterian Church. The unique, natural talents (God's gifts), learned skills, and years of experience each staff member brings to WPC are what makes our church function successfully according to our mission, our members, and our community. It has been our pleasure to work side by side with the pastoral staff, office staff, ministry leaders, Pre-school leadership, and the building maintenance team for another successful year.

Over the course of the last few years the Personnel Committee has learned that having a close working relationship with key church staff leads to better decisions, greater cooperation, mutual respect, and clarity of mission. The addition of Rev. Paula Mann to our Committee, and her extraordinary contributions, have made us more faithful managers. Working closely with Rev. Dr. Chakoian and Rev. Mann has enabled the work of the Committee to be nurtured by their sound judgement and powerful commitment to our shared faith.

We have also learned the power in the words of Pierre Teilhard de Chardin, *"Above all, trust in the slow work of God."* We as a committee have been so blessed by those who have chosen to share their gifts at WPC. No matter how urgent, how important, how serious a problem facing us, trusting in God will continue to guide our work.

*- Keith Samuels, Personnel Committee Chair*



**JJ Hickey,**  
Interim Director of  
Operations  
November, 2022-  
May, 2023



**Laurel Sanders,**  
Organist  
February, 2023—



**Sarah Ilger,**  
Director of  
Operations  
July—October, 2022  
and  
May—June, 2023

## PRESCHOOL



It was rewarding to see a return to normalcy in the 2022-23 school year for Westwood Presbyterian Preschool (WPCP). A big shift this year was that the allowable age was changed from 2.5 to 2 years, enabling WPCP to expand enrollment by accepting younger children. Fundraising for the school year was \$15,020

(92% of current families), with \$750 coming from church donations. Funds from the LoveRaiser go to equipment needs, staff stipends, and tuition assistance. The Preschool granted nearly \$40,000 in tuition assistance during the 2022-23 school year, furthering God's work by making a WPCP education accessible to families who could not otherwise afford it.

The Preschool hosted and participated in several successful community events, including the Fall Festival, Trunk or Treat, the Earth Care Project, a parent party and art auction at the UCLA Botanical Gardens, WPC's Easter Egg Hunt, and family drop-in events. Staffing in this tight labor market continued to be a challenge, and the Preschool struggled to fill all of its open roles. The Preschool was, however, able to operate smoothly and made a priority to award bonuses and salary increases to returning staff members to promote retention.

At the end of the school year, Session approved funding for the Preschool classrooms to be repainted, which should improve the aesthetics of the aging building while WPC awaits approval to break ground on the new Preschool building.

Preschool Director Brienne (Bri) Naiman continues to be an exceptional leader, and we are grateful for her dedication to the staff, children, and families of WPCP. This year, the Preschool Committee met quarterly, as opposed to monthly, so that our meetings coincided with important decisions needing to be made (e.g. events, budget, fundraising support, etc.). In response to findings from the Discernment Task Force, the Vision and Planning Committee recommended that the Preschool Committee be folded into Children and Family Ministries beginning in the 2023-24 fiscal year. CFM will include a liaison to serve as the primary point of contact for Preschool needs, and Bri will attend CFM meetings at least twice a year to provide important updates on the Preschool.

Bri will also continue to meet once a year with the Finance Committee and will coordinate with Mission & Outreach to collaborate on projects with the Preschool families. As we look to the future, we recognize that there may be additional challenges and opportunities associated with the construction of the new building and the competition amongst other local programs, including the expansion of universal Transitional Kindergarten. We seek God's blessings and guidance as WPCP enters the 2023-24 school year.

*- Rose Helm, Preschool Committee Chair*



Westwood  
Presbyterian Church  
PRESCHOOL

**Preschool Director**  
Brienne Naiman

**Office Manager**  
Heidi Rudd

**Office Assistant/Teacher**  
Priscilla Glaza

**Teachers:**  
Marisa Flores  
Susana Gonzalez  
Bertha Juarez  
Irma Ortiz  
Genesis Ospina  
Jeeva Paxgren  
Adriana Pérez  
Lulu Ramirez  
Becky Reeves  
Zeke Rippey  
Maira Soto  
Lugie Smith

**Movement Education**  
Monik Jones

**Staff Resource**  
Jessica Place  
Rev. Dr. Christine Chakoian

**Committee Chair**  
Elder Rose Helm

**Committee:**  
M.C. Haslett  
Rose Helm  
Kristyn Humphreys  
Kim Labinger  
Sheila Lawrence  
Gay Macdonald  
Andrew Wong





*The Property Development Committee exercises stewardship of the church's properties, overseeing all aspects of upkeep, maintenance and enhancement.*

**Commission Chair**  
Con Howe

**Commission**  
Jan Cloyde  
Martha Kadue  
Jon Stewart

**Staff Resource**  
Rev. Paula Mann  
Rev. Dr. Christine Chakoian

**Consultants**  
Rev. Dr. Lynn Cheyney  
Turner Smith

## SESSION ADMINISTRATIVE COMMISSION (PROPERTY DEVELOPMENT)



During the past year, the Administrative Commission continued to oversee and guide the WPC's project to provide new facilities and a long-term endowment for the Church and its mission. WPC previously approved an agreement with Belmont Village Assisted Living to ground lease the Church property (except for the Sanctuary) for 99 years, making substantial monthly payments to the Church in order to build and operate an assisted living facility on the current surface parking lot.

Phase 1 of the project would be a new 2-story building in the rear of the Church's property containing the pre-school, Church offices and meeting Rooms, and a meditation chapel. Phase 2 of the project would include a 12-story assisted living facility plus a new Fellowship Hall and other Church facilities, as well as underground parking.

A video presentation on the design of the project appears on the Church's website at [westwoodpres.org](http://westwoodpres.org).

The project has been completely approved by the City of Los Angeles. That lengthy process included approval by 2 Neighborhood Councils, the Westwood Design Review Board, the Zoning Administrator, the City Planning Commission, and the City Council. Unfortunately, after that long public process, some next-door neighbors sued the City (and Belmont and WPC) claiming that the City erred in approving the project.

In March 2023, the Los Angeles Superior Court ruled entirely in favor of the City/Belmont/WPC. The same opposition subsequently appealed to the Court of Appeals, which is the last step in the legal process. (Under our agreement, Belmont is responsible for paying for all of the legal defense of the project and in addition continue to make monthly payments to the Church.)

While the judicial process gets to its inevitable conclusion, the Administrative Commission has worked with the architect of Phase 1 to refine the design and to prepare for construction.

*- Con Howe, Administrative Commission Chair*



*The Reopening Task Force was formed to develop a strategic response to the COVID lockdown.*

**Task Force Chair**  
Rose Helm

**Committee:**  
Steve Hauser  
Keith Samuels

**Staff Resource**  
Rev. Dr. Christine Chakoian  
Anne Cioffi  
Sarah Ilger, *(July-October 2022)*  
Brianne Naiman  
Dan Redfeld

## RE-OPENING/COVID RESPONSE TASK FORCE

At the start of last year, WPC administered a survey to the congregation to determine how we could take steps to help accommodate immunocompromised members and others who were reluctant to return to worship. The church responded by identifying a “safe section” as the back three rows located under the balcony overhang as a safe section, where anyone seated in this section was required to wear a mask and adhere to at least six feet of spacing.

In the spring, Session approved to discontinue all requirements related to COVID-19 vaccination, testing, and any other policies that are in excess of the guidance put forth by local, state, and federal departments of public health. WPC will continue to comply with all local, state, and federal guidance related to COVID-19, especially as it pertains to positive cases.

We are truly blessed with the Lord’s presence that our community was able to remain healthy and safe through this great period of challenge in our Church’s history.

As we look to the future, we recognize that there may be times where COVID-19 ebbs and flows, and the COVID Response Task Force is committed to continuing to monitor with vigilance and enact any precautionary measures as needed. God’s Spirit will no doubt be at work in the future, shepherding us through challenging times while protecting the health and safety of those in our community.

*- Rose Helm, Reopening/COVID Response Task Force Chair*



*The Spiritual Formation Committee provides opportunities to nourish the life of the Spirit and deepen one's relationship with God through contemplative services and practices, and by enriching a sense of community with one another.*

#### Committee Chair

Elder Lisa Goalen  
Becky Crane-Okada,  
Co-Chair

#### Committee:

Charles Cioffi  
Michele Hauser  
Megan Imundo  
Bill Soldwisch

#### Staff Resource

Jake Putich



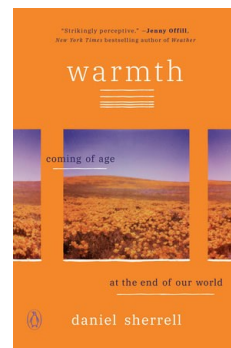
## SPIRITUAL FORMATION



The Spiritual Formation Committee continues to cultivate ways to deepen our connection with God and one another, particularly through our pillar programs: vespers services and small groups. We have continued to refine the contemplative nature of vespers, enjoying the gorgeous inclusion of The Vespers Ensemble to this meditative worship experience. In terms of small groups, a great deal of conversation and prayerful consideration goes into the books chosen for

the studies we organize, with the hope that open, honest, and vulnerable conversation with each other will draw us deeper into the life of the spirit. The beauty and simplicity of these programs reminds us that we must cultivate our senses to listen for God in the quiet places, the humble places. For, as scripture reminds us, the divine presence reaches toward us in silence and stillness.

We were vitalized and encouraged by WPC's "Earth Care Project" in October 2022, integrating ecological compassion into every aspect of the church's programs and events. In collaboration with Adult Education Committee, we kicked off our Fall Small Groups with a study of Daniel Sherrell's *Warmth: Coming of Age at the End of Our World*, which launched directly after a Faith Conversation with the author. We hope this is something to take into the future: collaboration only strengthens the impact of the message and gives space to receive it in many ways. Providing a space to contemplate our calling to care for the earth both individually and in small groups integrates mind, heart, and action in the dynamic of faith, which in turn helps us to resist the (very Presbyterian!) temptation to focus merely on the intellectual aspects of Christianity.



In the year ahead, we hope to expand opportunities for WPC to engage in the life of the spirit, whether through a Contemplative Retreat at a local monastery, richer opportunities for small group engagement, or deeper collaboration with other WPC committees. The Christian tradition provides us with incredible tools to cultivate a dynamic and vibrant spiritual life made manifest in our love for God, one another, and the world. It is our goal to continue the process of spiritual enrichment at WPC through established and beloved programs while at the same time remaining open to the leading of God's Spirit, wherever its breath may guide us

*- Lisa Goalen, Spiritual Formation Committee Chair*



## STEWARDSHIP

In this year's Pledge Drive, the Stewardship Committee decided to highlight WPC as our treasured place of worship. The Stewardship Committee's mission is to connect with the congregation, encouraging their financial support to not only maintain our place of worship, but to continue doing God's work for all.

We were blessed to have members of our committee and new WPC member, Dr. Ernest Hayward, share what WPC means to them. These heartfelt testimonies were deeply moving. As said by one of our young members, "WPC is more than a church, it's a home." It's God's house and our home to celebrate faith with family and friends. We're happy to announce that this year members gave most generously to the Pledge Drive, for which we are all deeply grateful.

*- Lou Moore Singleton, Stewardship Committee Chair*



**God's House  
Our Home  
Faith Family Friends**

*The Stewardship Committee challenges our church family to respond to the privilege of responsible Christian stewardship, encouraging generosity through the spring stewardship drive and year-round stewardship education plan.*

### Committee Chair

Elder Lou Moore Singleton

### Committee:

Sali Fomukong  
Donald Morrison  
Kelly Sheridan

### Staff Resource

Rev. Dr. Christine Chakoian



## STUDENT MINISTRIES



PATH Garden Project

Student Ministries seeks always to nurture the energy and inquiry of our teens, to guide them to deeper understanding and faith, and to channel their enthusiasm into action that serves Christ, our community, and our world. It is a constant challenge with great rewards.

This year, Student Ministries emerged from the Pandemic, like the Church at large, with energy, initiative, and imagination. We sponsored the first Blessing of the Animals service at WPC on

October 16, 2022. We also worked at the PATH residences in Long Beach in October, 2022 to prepare and plant a garden there.

High school students Jack Paris and Anna McDowell were instrumental as members of WPC's Earth Care Task Force, planning and executing a month of worship services and other activities in October, 2022, centered around the beauty of God's creation and the sacred, awesome duty we have as Christians to care for what He has entrusted to us.

In January of this year, our teens walked the streets of Westwood for the annual L.A. County Homeless Count.

At the end of May, seven teens were confirmed as new members after completing eight weeks of study, discussion, and prayer equipping them to confess and affirm their faith as Presbyterians and members of our Church.

We continued to partner with Mission and Outreach at Esperanza Elementary School. And we enjoyed fun and fellowship, on Sunday mornings and evenings throughout the year, including a special Escape Room & Ramen Night.

We look forward to the coming year with excitement and anticipation of what God will do through our teens at WPC.



PATH Garden Project



Escape Room & Ramen Night

- Michael Sohigian, Chair of Student Ministries

*The Student Ministries Committee carries out the church's commitment, made in the vows of baptism, to assist in raising the young people of the church to a deep and abiding faith in Jesus Christ, overseeing all aspects of the church's ministry with middle-schoolers and high-schoolers.*

### Committee Chair

Elder Michael Sohigian

### Committee:

Laurie Flenner  
Robyn Paris  
Laura Scott  
Alisa Stewart  
Michelle Whelan

### Staff Resource

Jake Putich



## VISION & PLANNING

The committee's continued attention to the question of "What is God calling us to do?" has not only informed our discussions and plans, but is the guiding principle for the work we are preparing to share with the church leadership. God's presence has been felt in our reflections and moments of prayer as we have continually and humbly sought to envision new directions for the future of WPC. The contributions each member of this committee has made have been guided by this question and held closely as the discussions have evolved from reflections, to thoughts, to ideas, to recommended actions.

Last year, we made a thorough review of the Discernment Task Force Report's recommendations, held discussions with every chair and staff member of all the committees, analyzed the information gathered in a SWOT outline and coordinated our efforts with the Nominating Committee. Additionally, we met with several committee chairs to address their questions and met with church leadership for feedback and preferences on steps moving forward. God has been evident every time our efforts have been informed by the honest and heartfelt responses we have received. It has been interesting to witness God's presence as the seeds of our past discussions have begun to show in plans and conversations coming from other parts of the church.

This committee has learned that a close relationship with the Ruling Elders will advance the commitment we all want for a deeper connection with the guiding principles of our Church as expressed in Micah 6:8. Our understanding of issues, based on the discussion and feedback we have received from the church leadership, will guide us to propose new ways to achieve collaboration and enliven our enthusiasm for the goals and growth the entire Church wants. Our shared goal with the Ruling Elders and staff is to significantly revitalize our faith and strengthen our connection to God, to each other and with the world God loves.

*- Jann Williams, Vision & Planning Committee Chair*

*The Vision & Planning Committee seeks to discern and manifest God's call for WPC and design a plan for action.*

### **Committee Chair**

Elder Jann Williams  
Caryl Carothers, Co-Chair

### **Committee:**

Ellen Caldwell  
Courtney Davis  
Lara Fedoroff  
Scott Hartle  
Peter Helm  
Kathryn Howe  
Anne Mathews  
Brad Paris  
Brett Whelan

### **Staff Resource**

Rev. Dr. Christine Chakoian  
Rev. Paula Mann





## WORSHIP & MUSIC

The gift of music helps us all worship in a more thoughtful and meditative manner. We believe the music presented this past year has been inspirational and motivating, helping all worshipers communicate more effectively with God and to serve Him more effectively.

We've learned that cooperation in presenting great music to both the congregation and the wider community is key in communicating God's love. Each committee member has served in one way or another in making music programs and weekly worship run smoothly along with organizing and presenting our annual *Messiah Sing-A-Long* on December 2, 2022 and the spring Music at Westwood concert, *Peace in Our Time* on May 21, 2023. We've also bonded as a group.

Worship & Music worked with various committees to organize some very special services this past year. Our Blessing of the Animals service was enjoyed by the congregation and their pets on Sunday, October 16, 2022 and we rejoiced in our 75th Anniversary on November 13, 2022. We also worked with the Earth Care committee for a special Earth Day service on April 23, 2023 and we celebrated Juneteenth together in worship on June 18, 2023.

We were also able to celebrate the return of our Christmas Eve, Maundy Thursday, Easter Sunrise Service (at Pierce Brother's Mortuary) and Easter services back to a pre-pandemic structure with empowering messages from our pastoral staff, scripture readings and the bringing back of our beloved choir and instrumentalists.

Worship & Music also celebrated receiving 12 new members by Reaffirmation and Transfer and 5 baptisms this past year.

*- Steve Hauser, Worship & Music Committee Chair*

*The Worship and Music Committee cares for all aspects of worship, providing excellent Sunday morning and special services, and guides the church's music ministry.*

**Committee Chair:**  
Elder Steve Hauser

**Committee:**  
DeAnne Crossley  
Stephen Dawson  
Marilyn Robertson  
Kathy Screiner

**Staff Resources**  
Rev. Dr. Christine Chakoian  
Dan Redfeld



Easter Sunrise Service



WPC's 75th Anniversary  
Worship Service

