

STANDARD 22' x 20' DOUBLE HOUSE

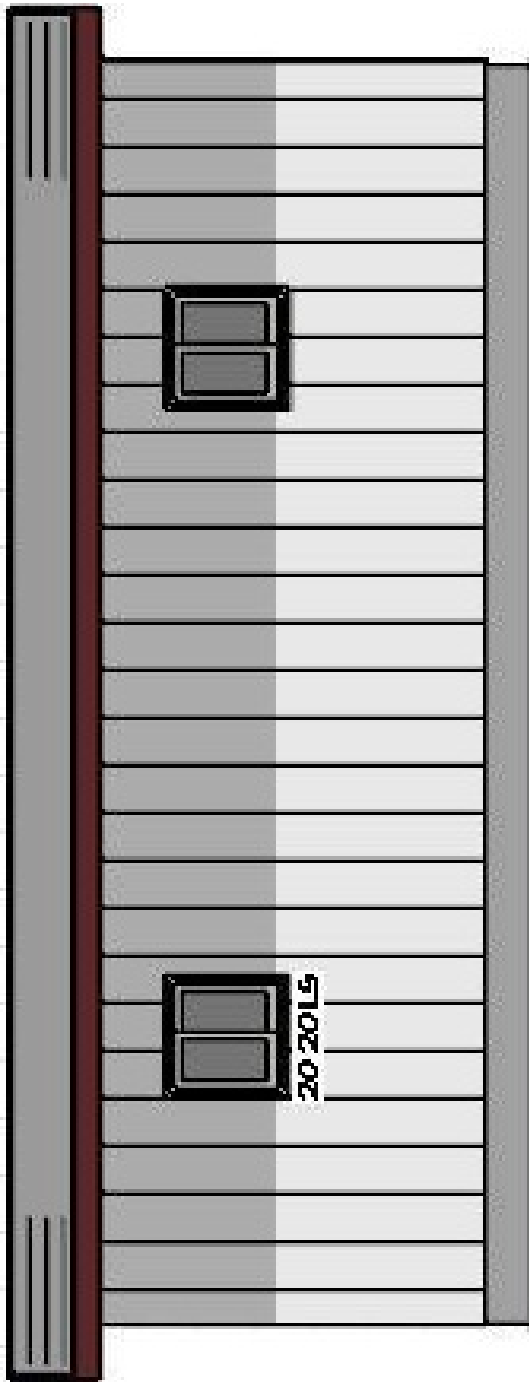
HEART FOR ALL NATIONS

DRAFTING BY:
S. A. JOHNSON
sa.johnson1007@gmail.com

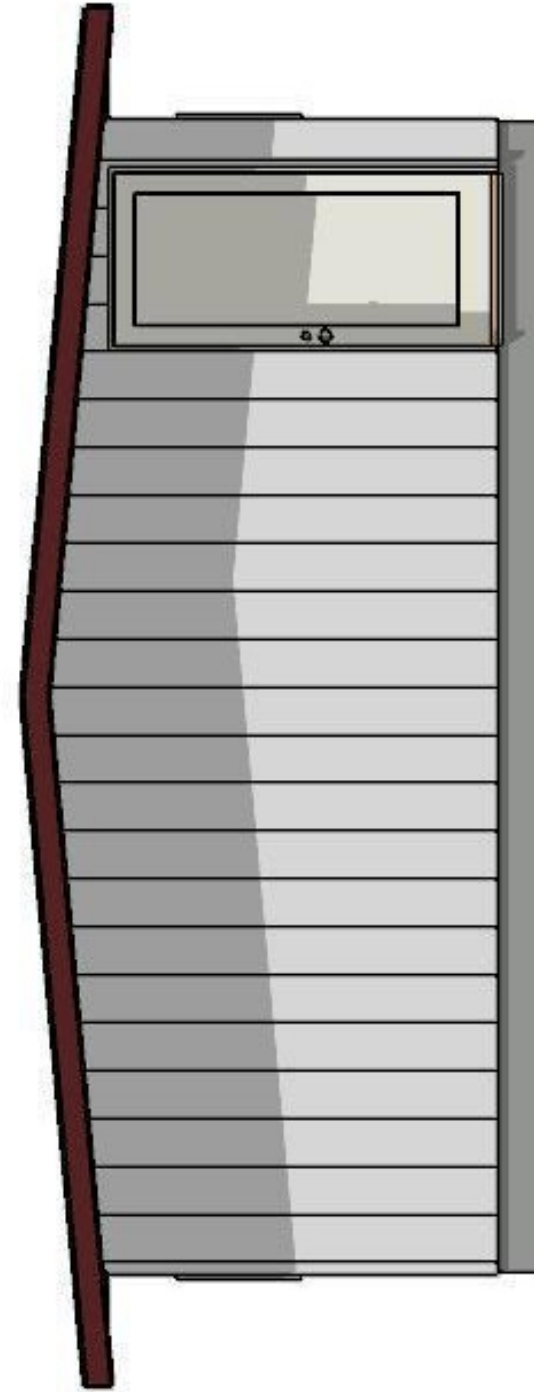
EXTERIOR 3D VIEWS
(SEE SHEET 3 FOR PLAN INDEX)

SCALE:
NTS
DATE:
5/1/2022

PAGE
1



22' SIDE ELEVATION



20' SIDE ELEVATION



SHEET INDEX CONT

12	PLAN 'A' 3D VIEW CENTER WALL & NOTES
13	PLAN 'A' CENTER WALL LAYOUT & CUT LIST
14	PLAN 'B' 3D VIEW CENTER WALL & NOTES
15	PLAN 'B' CENTER WALL LAYOUT & CUT LIST
16	PLAN 'A' T WALL AND DIVIDER WALL LAYOUT & CUT LIST
17	PLAN 'B' FULL WALL LAYOUT & CUT LIST
18	PLAN 'B' SHORT WALL LAYOUT & CUT LIST

PLEASE VERIFY THAT ALL
BUILDING MATERIALS ON SITE
ARE IN THE QUANTITIES LISTED
BELOW PRIOR TO COMMENCING
CONSTRUCTION!

✓	QTY.	MATERIAL	USE
	80	2"x4"x8'	STUDS AND PLATES
	58	2"x4"x12'	RAFTERS AND PLATES
	18	4'x8' OSB PLYWOOD	ROOF SHEETING
	22	4'x8' EXT. SIDING	EXTERIOR WALL SHEETING
	15	4'x8' INT. SHEETING	INTERIOR WALL SHEETING / SOFFIT
	9	1"x3"x8' PINE	CORNER TRIM
	5	1"x3"x12' PINE	DOOR AND WINDOW TRIM
	4	1"x6"x12' PINE	EAVE FACIA
	4	1"x6"x14' PINE	GABLE END FACIA
	7	ROLLED ROOFING	ROOF
	10	METAL FLASHING	ROOF
	1	DOOR	EXTERNAL DOOR
	1	DOOR HARDWARE	EXTERNAL DOOR

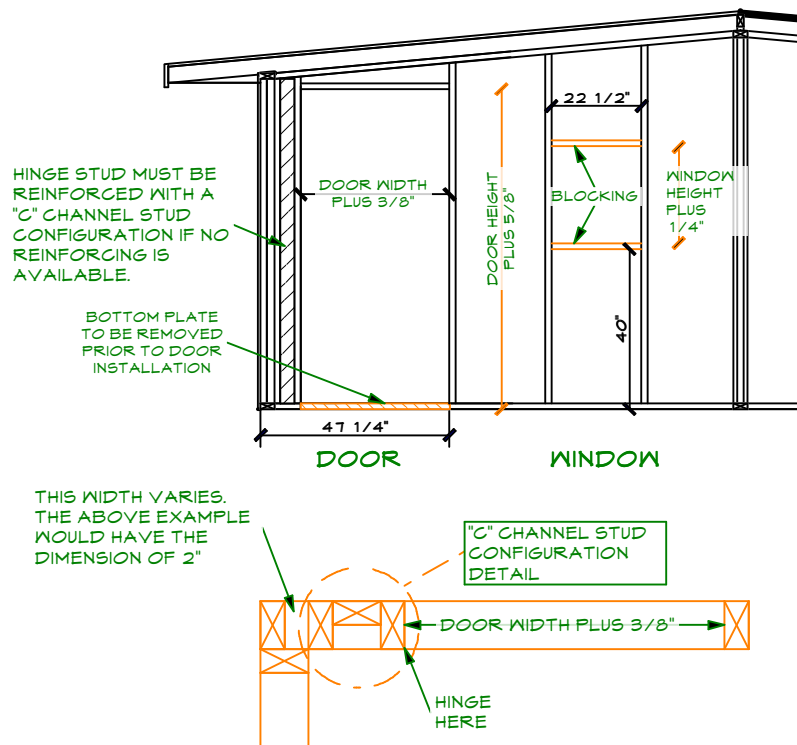
NOTE: THE HOUSE COMES WITH 3 WINDOWS. ADDITIONAL
WINDOWS CAN BE ORDERED UPON REQUEST.

DOOR NOTES:

- DETERMINE PLACEMENT OF DOOR PRIOR TO FRAMING WALLS. DOOR SHOULD HAVE BEEN DELIVERED. CONFIRM/CHECK WITH HOMEOWNER. CONSULT WITH OWNER FOR PREFERRED PLACEMENT.
- CHOOSE STRAIGHT STUDS TO PLACE TO EACH SIDE OF THE DOOR.
- A "C" CHANNEL STUD CONFIGURATION MUST BE USED IF THERE IS NO REINFORCING AVAILABLE FOR THE HINGE-SIDE STUD. (ie. IF PLACED IN THE MIDDLE OF THE 20' WALL)
- THE DOOR MAY BE LOCATED ON ANY WALL, IN ANY OF THE CORNERS OR TO EITHER SIDE OF THE CENTER WALL. DOOR SWING SHOULD BE INWARD TOWARD THE NEAREST WALL.
- BOTTOM PLATE WILL BE CUT OUT AFTER THE ROOF IS SET AND THE WALLS ARE SECURED TO THE SLAB, PRIOR TO INSTALLING THE DOOR.

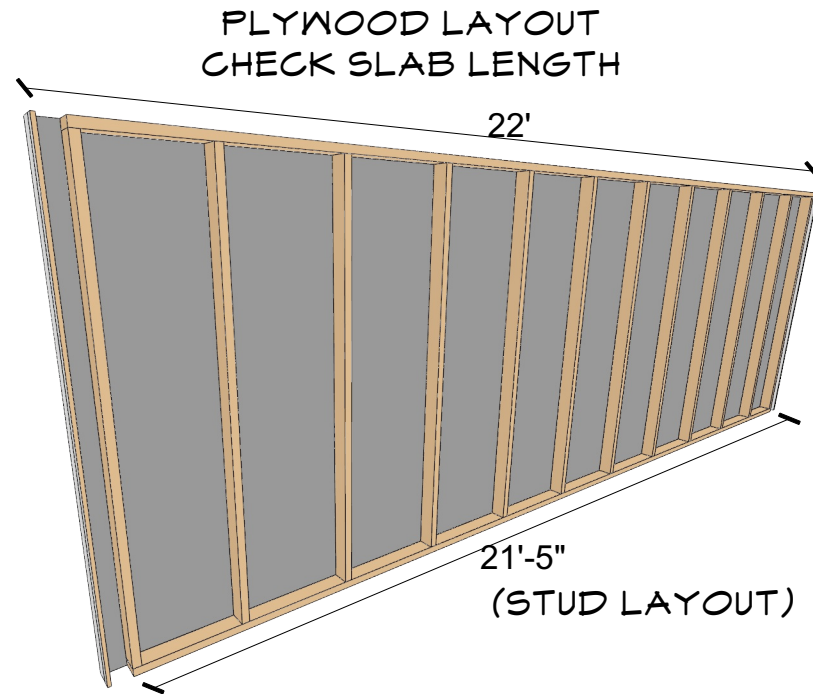
WINDOW NOTES:

- CONSULT WITH HOMEOWNER AS TO LOCATION AND HEIGHT OF WINDOWS. THREE WINDOWS COME STANDARD WITH THE HOUSE BUT MORE CAN BE ADDED AS "EXTRAS."
- WINDOWS ARE TO BE INSTALLED ONCE WALLS ARE STANDING AND THE ROOF IS IN PLACE. WINDOWS ARE DESIGNED TO FIT BETWEEN STUDS ON 24" CENTERS.
- BLOCKING TO BE DONE AFTER WINDOWS ARE INSTALLED. BLOCKING WILL BE AND EXTRA COST.



DOOR AND WINDOW CUT LIST

QTY.	MATERIAL	USE
1	2"x4"x DOOR WIDTH PLUS 3/8"	DOOR HEADER
2 PER WINDOW	2"x4"x22 1/2"	WINDOW BLOCKING

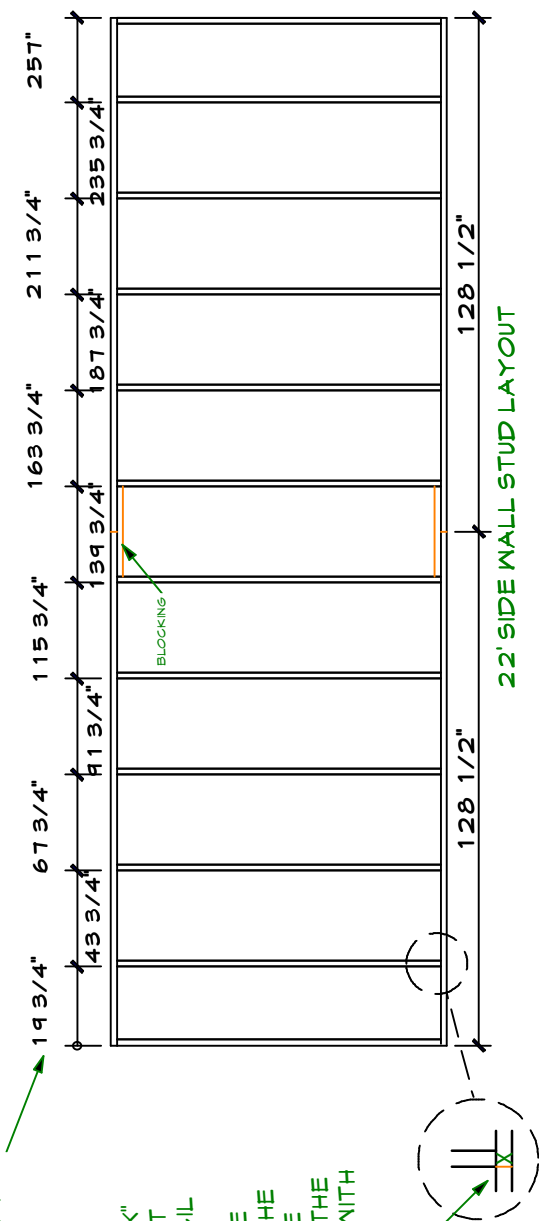


NOTES:

- DECIDE ON DOOR PLACEMENT PRIOR TO LAYOUT
- MEASURE SIDING AND ADJUST STUD LAYOUT TO MATCH SIDING WIDTH IF NECESSARY
- REFER TO DOOR AND WINDOW FRAMING ON SHEET 5 FOR LAYOUT DETAIL
- REINFORCE PLATE JOINTS WITH BLOCKING. (STUD LAYOUT)
- STUDS ARE LAID OUT LEFT TO RIGHT ON EDGE. MEASUREMENTS SHOWN ARE INCREMENTAL. (STUD LAYOUT)
- SIDING IS FLUSH TO TOP. 3 1/2" OVERHANG ON SIDES. 1" OVERHANG ON BOTTOM

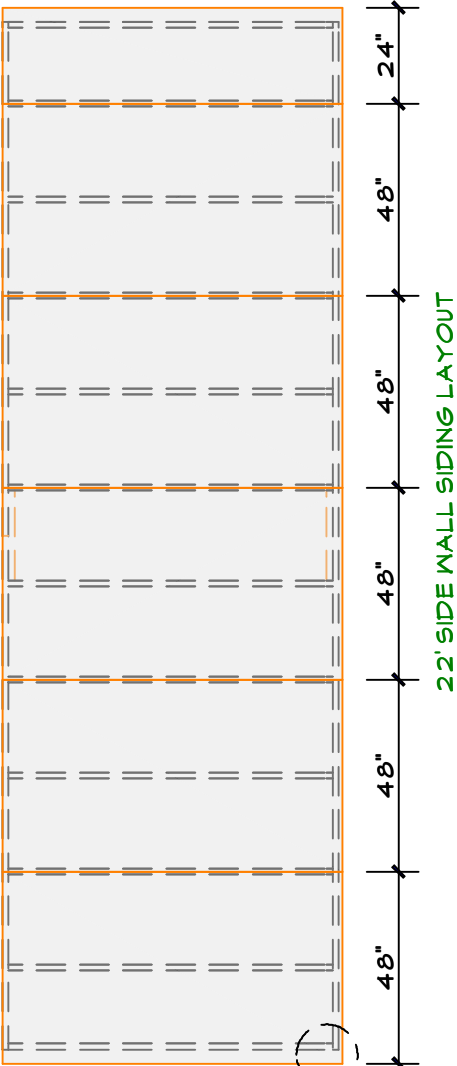
MEASURE LEFT
TO RIGHT.

PLACE THE "X"
TO THE RIGHT
OF THE PENCIL
LINE MADE
MARKING THE
DISTANCE. THE
STUD WILL BE
PLACED ON THE
"X" LINED UP WITH
THE MARK.



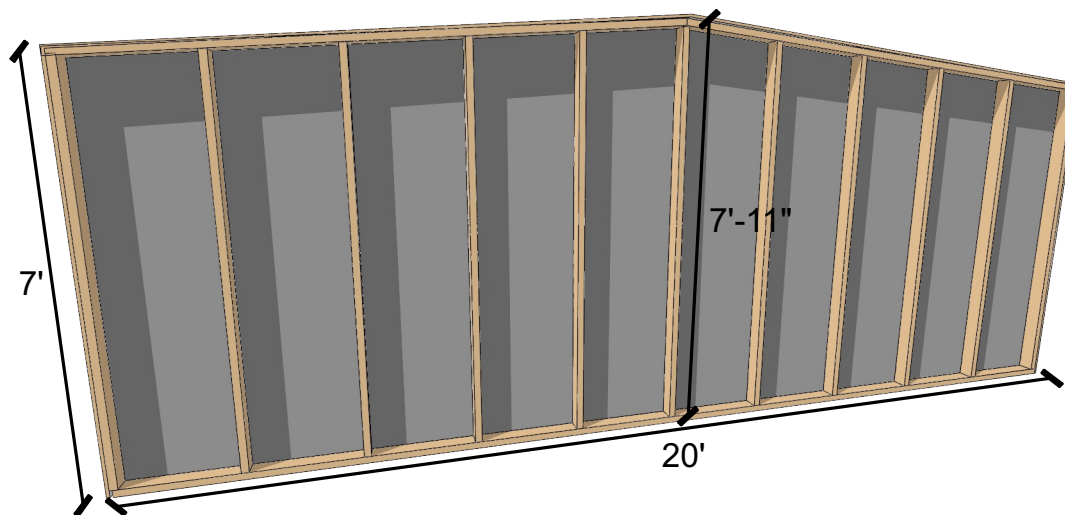
SIDE DIM.
3 1/2"

BOTTOM DIM. 1"



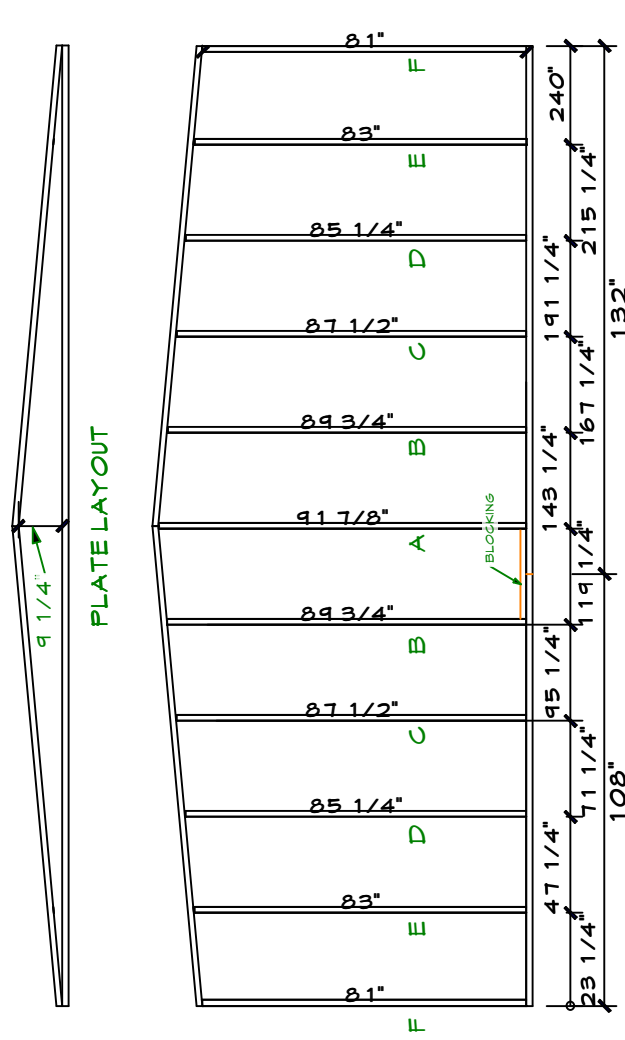
22' SIDE WALL CUT LIST			
QTY.	DESCRIPTION	MATERIAL	LENGTH
8	TOP/BOTTOM PLATE	2"x4"	128 1/2"
24	STUD	2"x4"	81"
4	BLOCKING	2"x4"	22 1/2"
10	EXTERNAL SIDING	4'x8' SHEET	48"x85"
2	EXTERNAL SIDING	4'x8' SHEET	24"x85"

*ALWAYS USE 8' 2X4'S FOR ANY LENGTHS LESS THAN 96"

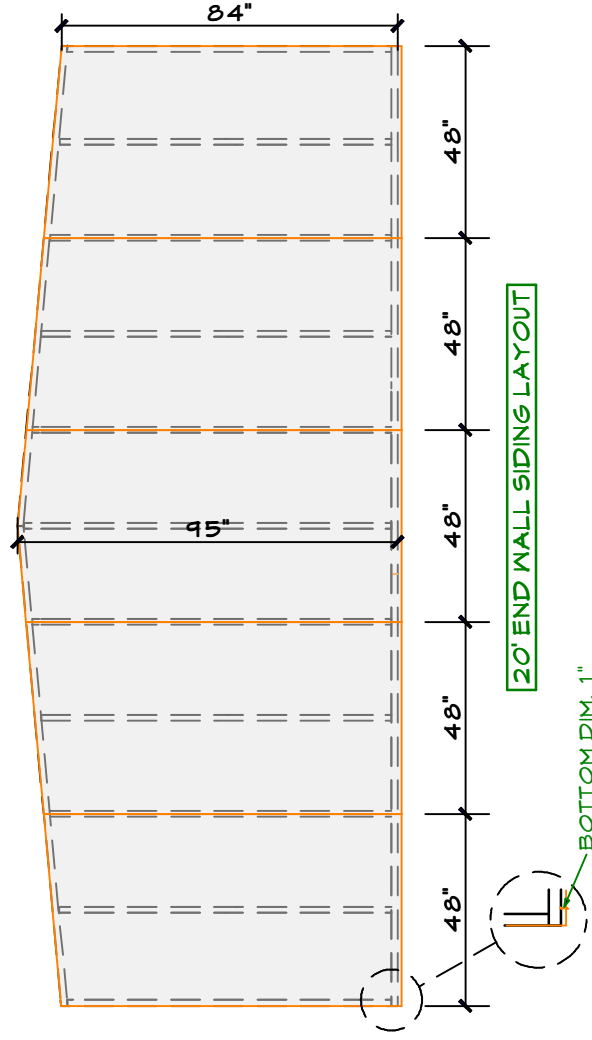


NOTES:

- DECIDE ON DOOR PLACEMENT PRIOR TO LAYOUT
- MEASURE SIDING AND ADJUST STUD LAYOUT TO MATCH SIDING WIDTH IF NECESSARY
- REFER TO DOOR AND WINDOW FRAMING ON SHEET 3 FOR LAYOUT DETAIL
- REINFORCE PLATE JOINTS WITH BLOCKING. (STUD LAYOUT)
- STUDS ARE LAID OUT LEFT TO RIGHT ON EDGE. MEASUREMENTS SHOWN ARE INCREMENTAL. (STUD LAYOUT)
- LAYOUT BOTTOM PLATE
- PLACE TOP PLATES PARALLEL TO BOTTOM PLATE, WITH 1 FOOT GAP AT THE CENTER, CREATING ALONG FLAT TRIANGLE. USE A FRAMING SQUARE TO TRANSFER THE MARKS FROM THE BOTTOM PLATES TO THE TOP PLATES. SEE "PLATE LAYOUT"
- INSTALL FULL PLYWOOD SIDING AFTER FRAMING, SQUARING AS EACH SHEET IS APPLIED
- CHALK LINE PLYWOOD ALONG THE SLOPE OF THE TOP PLATE, AND CUT ACCORDINGLY



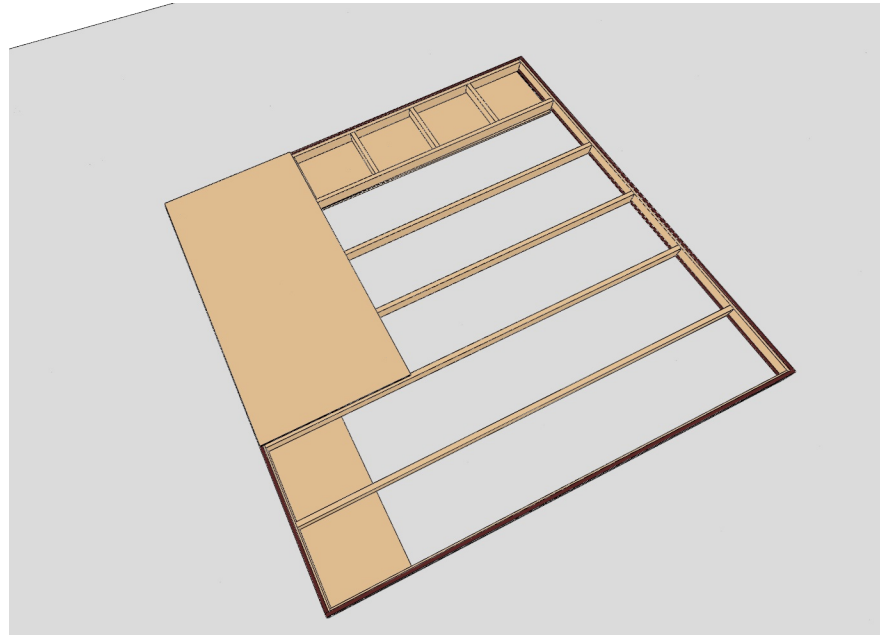
20' END WALL STUD LAYOUT



20' END WALL SIDING LAYOUT

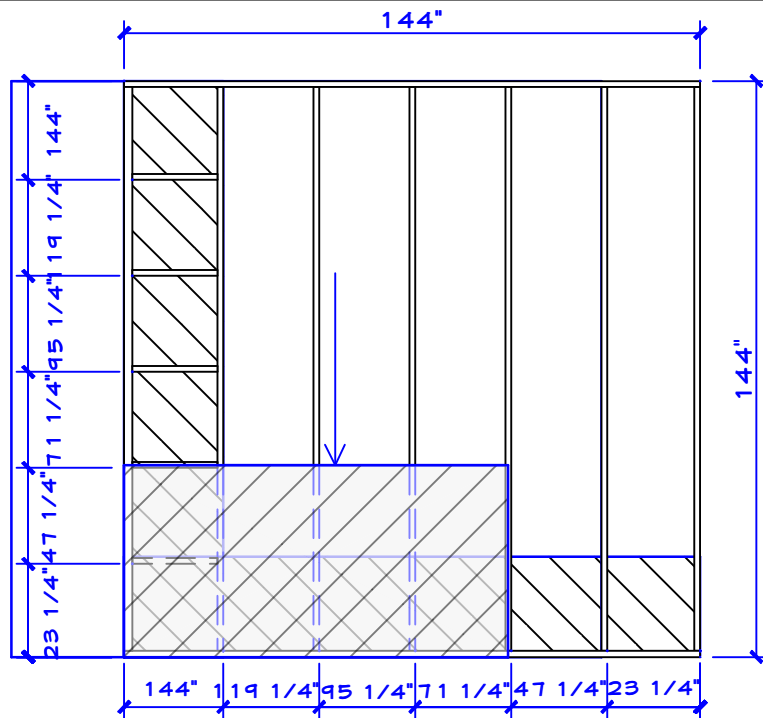
SIDING IS FLUSH ON SIDES. 1" OVERHANG ON BOTTOM. CHALK LINE SIDING ALONG TOP PLATES AND CUT WITH CIRCULAR SAW AFTER ALL SHEETS ARE INSTALLED.

20' END WALL CUT LIST			
QTY.	DESCRIPTION	MATERIAL	LENGTH
2	"A" STUD	2"x4"	91 7/8"
4	"B" STUD	2"x4"	89 3/4"
4	"C" STUD	2"x4"	87 1/2"
4	"D" STUD	2"x4"	85 1/4"
4	"E" STUD	2"x4"	83"
4	"F" STUD	2"x4"	81"
4	TOP PLATE	2"x4"	120 3/8"
2	BOTTOM PLATE	2"x4"	108"
2	BOTTOM PLATE	2"x4"	132"
2	BLOCKING	2"x4"	22 1/2"
10	EXTERNAL SIDING	4'x8' SHEET	48"x96"

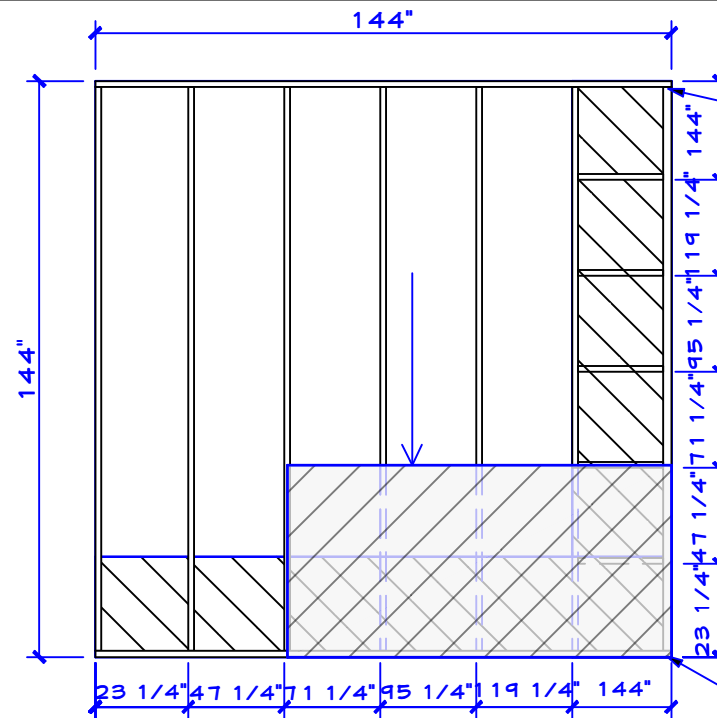


NOTES:

- CONSTRUCT 2 RIGHT PANELS AND 2 LEFT PANELS. NOTE RAFTER ANGLE (LONGEST SIDE GOES UP!)
- MEASURE SIDING AND ADJUST STUD LAYOUT TO MATCH SIDING WIDTH IF NECESSARY
- PLATES MUST BE 12 FEET (144") EXACTLY. MEASURE AND CUT TO SIZE.
- IMPORTANT: RAFTERS HAVE A 5 DEGREE ANGLE AT THE RIDGE END. WHEN CUT, MARK AN 'X' ON THE LONG SIDE. THIS MARKS THE TOP SIDE OF THE RAFTER.
- THE 'LADDER' IS LAID OUT STARTING FROM THE BOTTOM OF THE PANEL.
- SQUARE THE PANELS AS MUCH AS POSSIBLE, USING THE FIRST ROOF SHEATHING SHEET AS A GUIDE. (NOTE: REMAINING OSB TO BE INSTALLED AFTER ROOF PANELS ARE IN PLACE.)
- MEASURE THE RAFTERS AS YOU NAIL THEM TO THE OSB TO ASSURE THAT THEY ARE 24" ON CENTER.
- FLIP OVER THE PANELS AND APPLY THE SOFFIT MATERIAL TO THE TWO EDGES COMMON WITH THE OSB.



ROOF LEFT PANEL

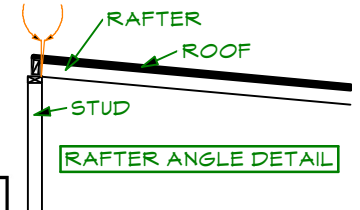


ROOF RIGHT PANEL

MARK LONG EDGES OF RAFTERS WITH AN 'X' AT THE LONG SIDE, TO ENSURE COMMON PLACEMENT WHEN FRAMING. 'X' SIDE REPRESENTS THE SIDE FACING UP, WHEN THE ROOF IS PLACED.

OSB SHARES A COMMON CORNER WITH THE BLOCKING AND SOFFIT

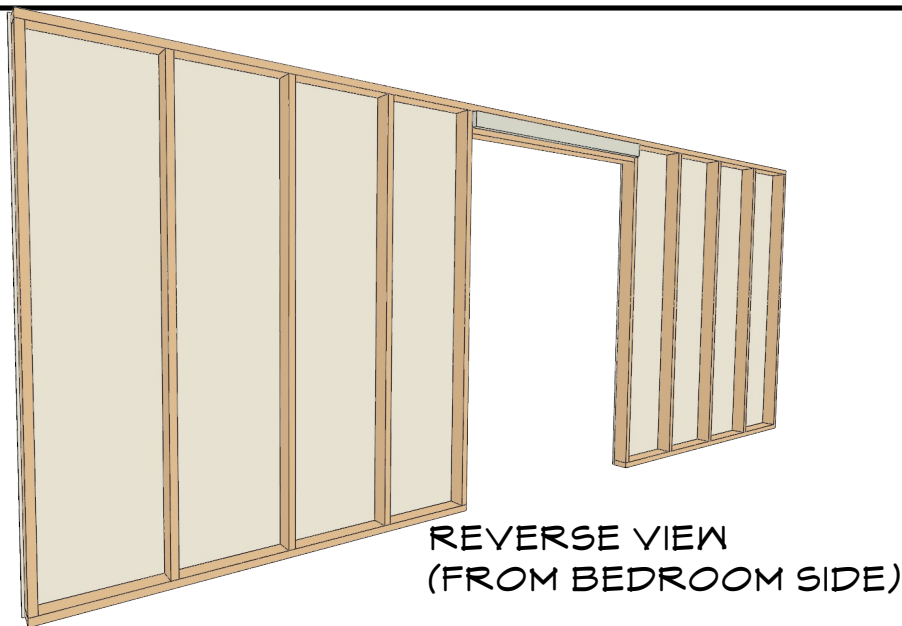
5 DEGREE ANGLE CUT LONG END ON TOP (141")



RAFTER ANGLE DETAIL

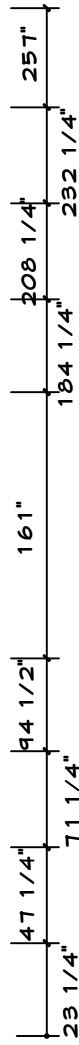
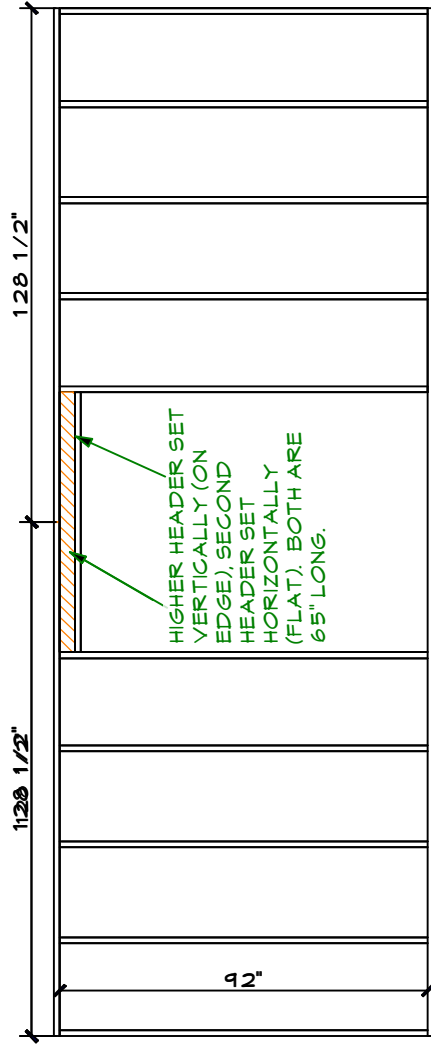
ROOF PANELS CUT LIST

QTY.	DESCRIPTION	MATERIAL	LENGTH
28	RAFTER	2"x4"	141" LONG SIDE W/ 5 DEGREE ANGLE
8	PLATE	2"x4"	144"
20	BLOCKING	2"x4"	21 3/4"
4	SHEETING	4'x8' OSB	FULL SHEET
4	SOFFIT	4'x8' SHEETING	24"x24"
4	SOFFIT	4'x8' SHEETING	24"x48"
8	SOFFIT	4'x8' SHEETING	24"x96"

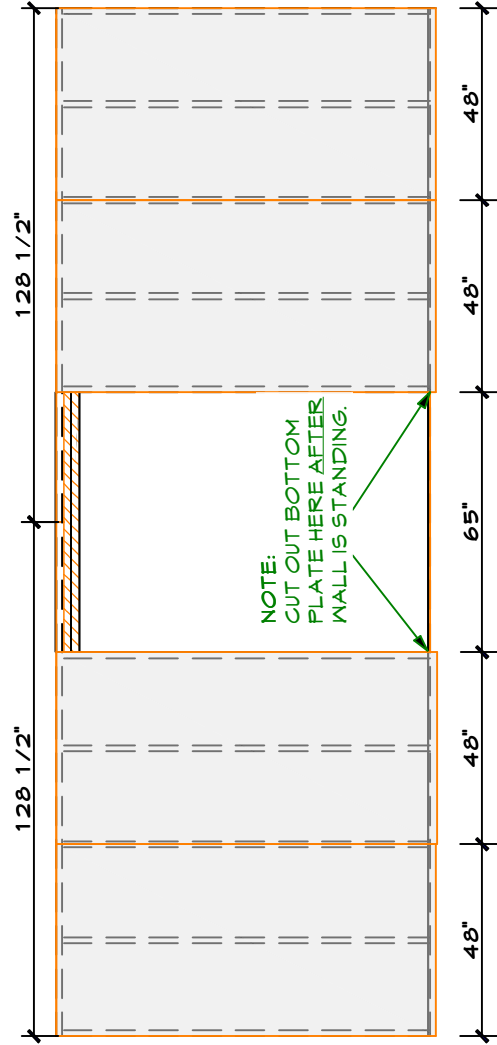


NOTES:

- MEASURE SHEETING AND ADJUST STUD LAYOUT TO MATCH SHEETING WIDTH IF NECESSARY
- DECIDE WHICH WAY YOU WILL TILT THE WALL UP WHEN FINISHED, AND ARRANGE FOR SHEETING ACCORDINGLY. (SHEETING SHOULD FACE EXTERIOR DOOR.)
- STUDS ARE LAID OUT LEFT TO RIGHT ON EDGE. MEASUREMENTS SHOWN ARE INCREMENTAL. (STUD LAYOUT)
- LAYOUT PLATES AND THEN FRAME WALL.
- REINFORCE TOP PLATES JOINTS WITH 2 DOOR HEADERS, FORMING A "C" CHANNEL WITH THE TOP PLATES.
- SHEETING IS FLUSH TO BOTTOM, COMING 1" SHORT AT THE TOP OF WALL DUE TO ROOF ANGLE.
- INSTALL SHEETING AFTER FRAMING, BEFORE RAISING WALL, SQUARING AS EACH SHEET IS APPLIED.
- CUT 20' OF 3 1/2" WIDE CENTER SHIM MATERIAL FOR TOP OF WALL.



CENTER WALL STUD LAYOUT
PLAN 'A'

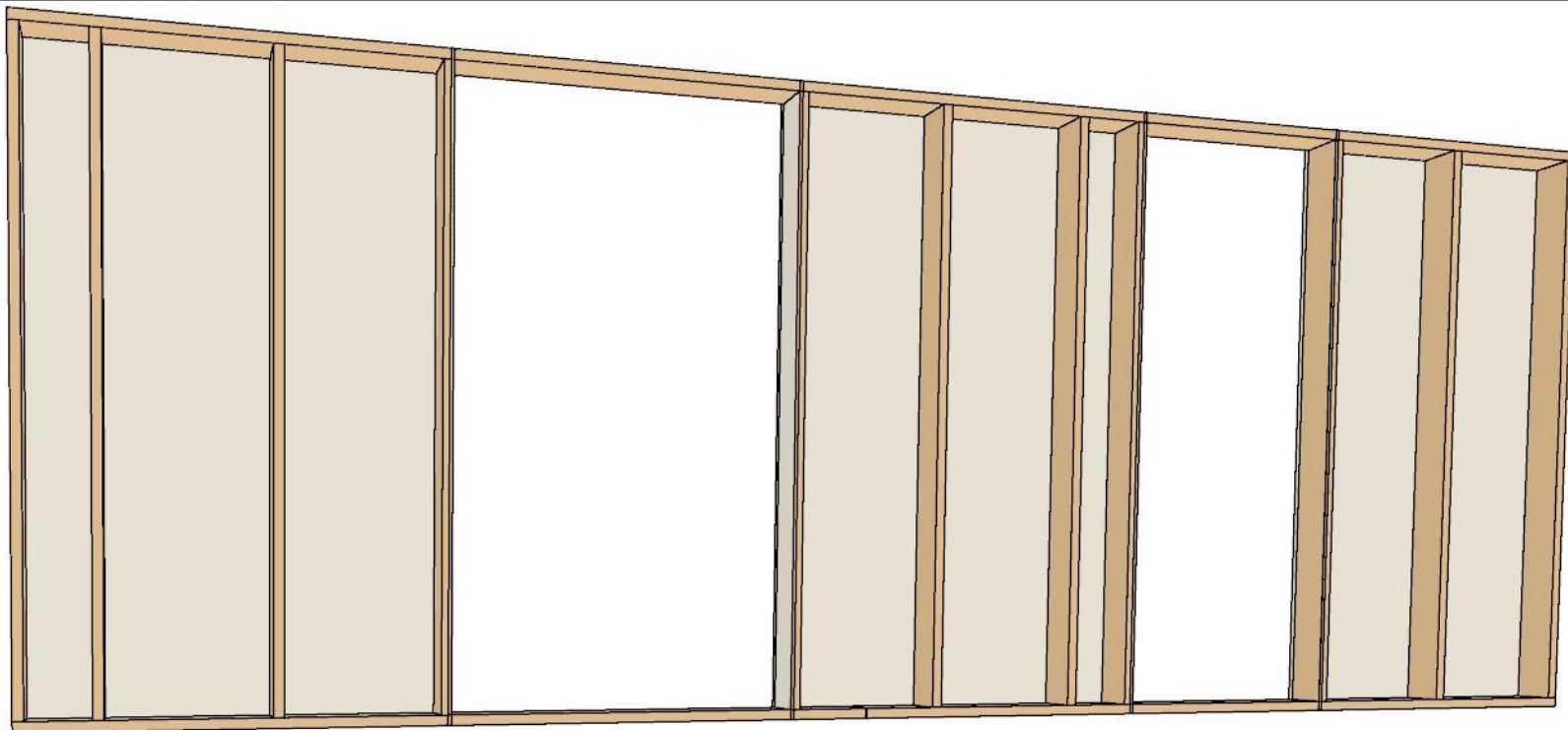


NOTE:
CUT OUT BOTTOM
PLATE HERE AFTER
WALL IS STANDING.

CENTER WALL PLYWOOD LAYOUT
PLAN 'A'

CENTER WALL CUT LIST - PLAN A

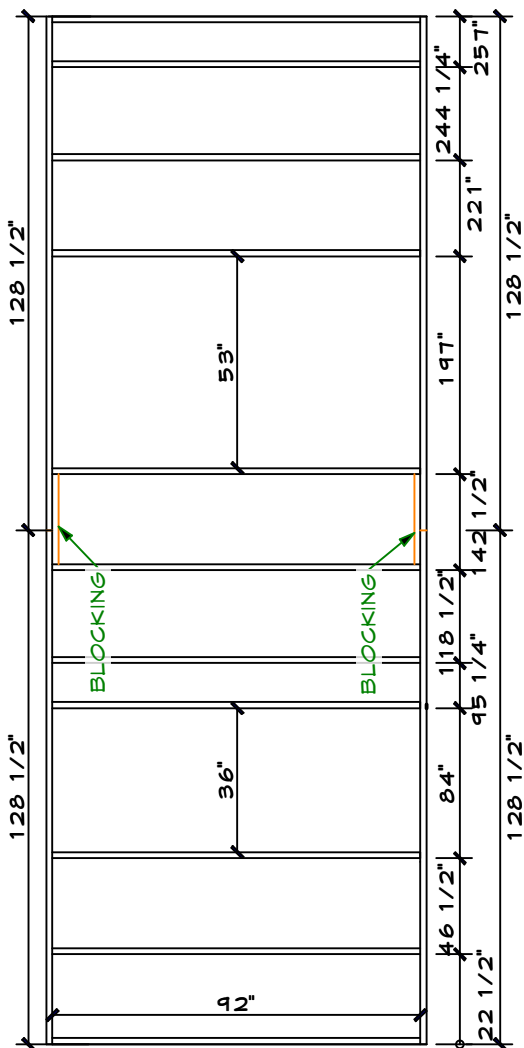
QTY.	DESCRIPTION	MATERIAL	LENGTH
10	STUD	2"x4"	92"
2	TOP PLATE	2"x4"	128 1/2"
2	BOTTOM PLATE	2"x4"	128 1/2"
2	HEADER	2"x4"	65"
1	TEMPORARY BOTTOM PLATE BLOCKING - CENTER JOINT	2"x4"	USE A SCRAP APPROXIMATELY 20" LONG
4	INTERNAL SHEETING	4'x8' SHEETING	48"x96"



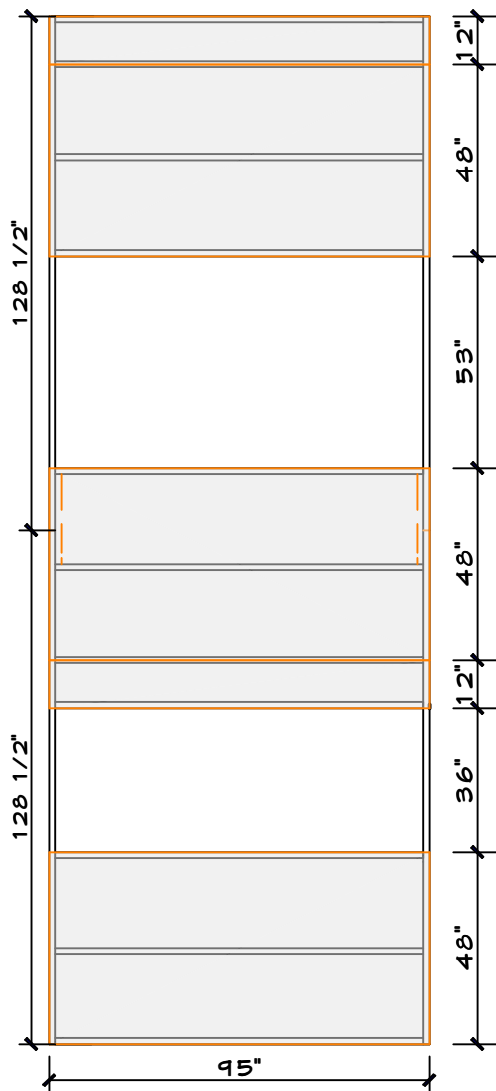
NOTES:

REVERSE VIEW
(FROM BEDROOM SIDE)

- MEASURE SHEETING AND ADJUST STUD LAYOUT TO MATCH SHEETING WIDTH IF NECESSARY
- DECIDE WHICH WAY YOU WILL SWING THE WALL UP WHEN FINISHED, AND ARRANGE FOR SHEETING ACCORDINGLY. (SHEETING SHOULD FACE EXTERIOR DOOR.)
- STUDS ARE LAID OUT LEFT TO RIGHT ON EDGE. MEASUREMENTS SHOWN ARE INCREMENTAL. (STUD LAYOUT)
- LAYOUT PLATES AND THEN FRAME WALL.
- SHEETING IS FLUSH TO BOTTOM, COMING 1" SHORT AT THE TOP OF WALL DUE TO ROOF ANGLE.
- INSTALL SHEETING AFTER FRAMING, BEFORE RAISING WALL, SQUARING AS EACH SHEET IS APPLIED.
- CUT 20' OF 3 1/2" WIDE CENTER SHIM MATERIAL FOR TOP OF WALL.



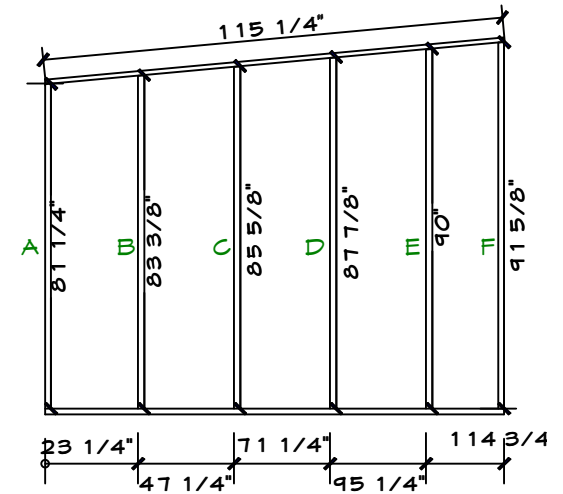
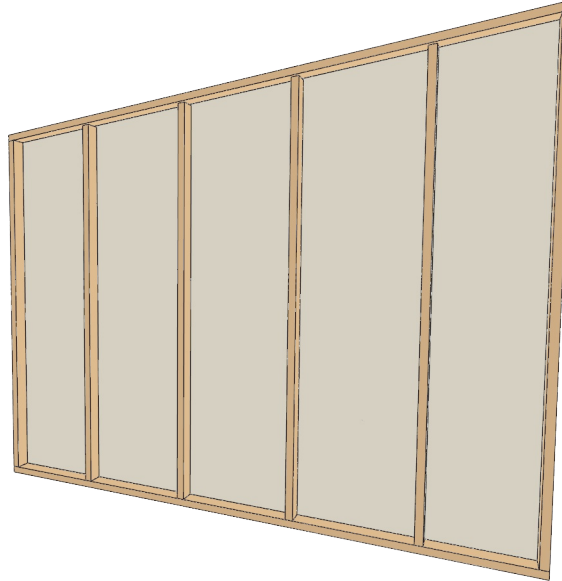
CENTER WALL STUD LAYOUT
PLAN 'B'



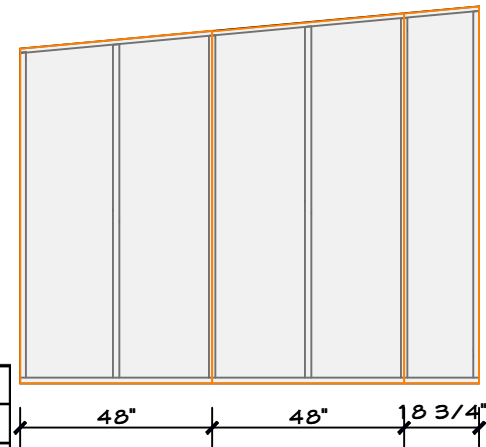
CENTER WALL PLYWOOD LAYOUT
PLAN 'B'

CENTER WALL CUT LIST - PLAN B			
QTY.	DESCRIPTION	MATERIAL	LENGTH
13	STUD	2"x4"	92"
2	TOP PLATE	2"x4"	128 1/2"
2	BOTTOM PLATE	2"x4"	128 1/2"
1	BLOCKING	2"x4"	22 1/2"
1	TEMPORARY BOTTOM PLATE BLOCKING - CENTER JOINT	2"x4"	USE A SCRAP APPROXIMATELY 20" LONG
4	INTERIOR SHEETING	4'x8' SHEETING	48"x96"

FULL WALL



FULL WALL STUD LAYOUT
PLAN A & B

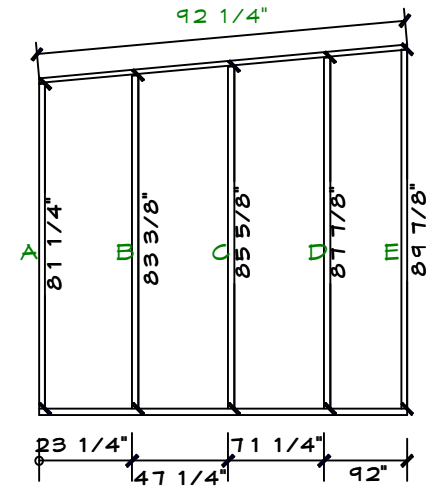
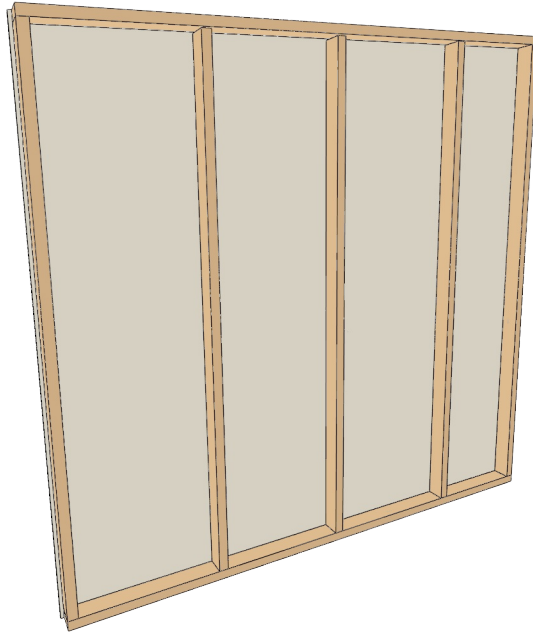


FULL WALL SHEETING LAYOUT
PLAN A & B

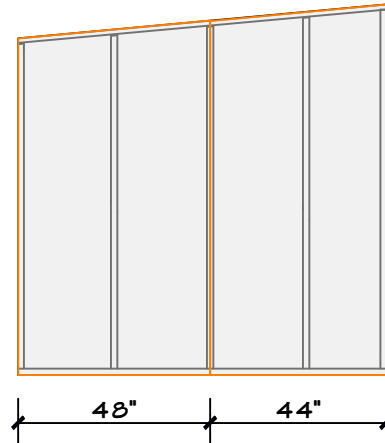
FULL WALL CUT LIST - PLAN A & B

QTY.	DESCRIPTION	MATERIAL	LENGTH
1	A' STUD	2"x4"	81 1/4"
1	B' STUD	2"x4"	83 3/8"
1	C' STUD	2"x4"	85 5/8"
1	D' STUD	2"x4"	87 7/8"
1	E' STUD	2"x4"	90"
1	F' STUD	2"x4"	91 5/8"
1	TOP PLATE	2"x4"	115 1/4"
1	BOTTOM PLATE	2"x4"	114 3/4"
4	INTERIOR SHEETING	4'x8' SHEETING	48"x96"

SHORT WALL



SHORT WALL STUD LAYOUT
PLAN B



SHORT WALL SHEETING LAYOUT
PLAN B

SHORT WALL CUT LIST - PLAN B

QTY.	DESCRIPTION	MATERIAL	LENGTH
1	A' STUD	2"x4"	81 1/4"
1	B' STUD	2"x4"	83 3/8"
1	C' STUD	2"x4"	85 5/8"
1	D' STUD	2"x4"	87 7/8"
1	E' STUD	2"x4"	89 7/8"
1	TOP PLATE	2"x4"	92 1/4"
1	BOTTOM PLATE	2"x4"	92"
4	INTERIOR SHEETING	4'x8' SHEETING	48"x96"