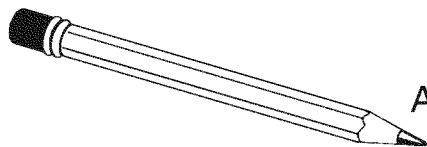




Jesus asked the man, "Do you believe in the Son of Man?" The man asked who it was. Jesus told him that it was He. What did the man say then?

Write the letter that is missing from the second word on the line.

- |          |         |      |   |     |
|----------|---------|------|---|-----|
| in WORLD | but not | WORD | " | ___ |
| in TENOR | but not | RENT |   | ___ |
| in REST  | but not | SET  |   | ___ |
| in DEAR  | but not | ARE  |   | ___ |
| in RIDE  | but not | RED  |   | ___ |
| in BARGE | but not | GEAR |   | ___ |
| in GLEE  | but not | LEG  |   | ___ |
| in LADLE | but not | LEAD |   | ___ |
| in LILAC | but not | CALL |   | ___ |
| in TEAM  | but not | MAT  |   | ___ |
| in VAST  | but not | SAT  |   | ___ |
| in ROUTE | but not | TOUR | " | ___ |



And he worshiped Him!

Ages 7+

March 22, 2020 • John 9:1-41

## Jesus Heals a Man Born Blind

As Jesus and His disciples went along, they saw a man who was blind from birth.



Complete this picture of Jesus meeting the blind man.

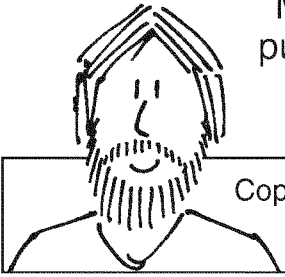


**GATEWAY**  
**COMMUNITY**  
CHRISTIAN REFORMED CHURCH

2884 Gladys Ave  
Abbotsford, BC  
604-859-5908  
www.gatewaycrc.ca

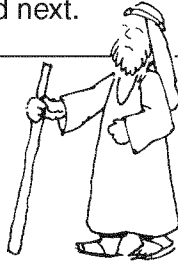
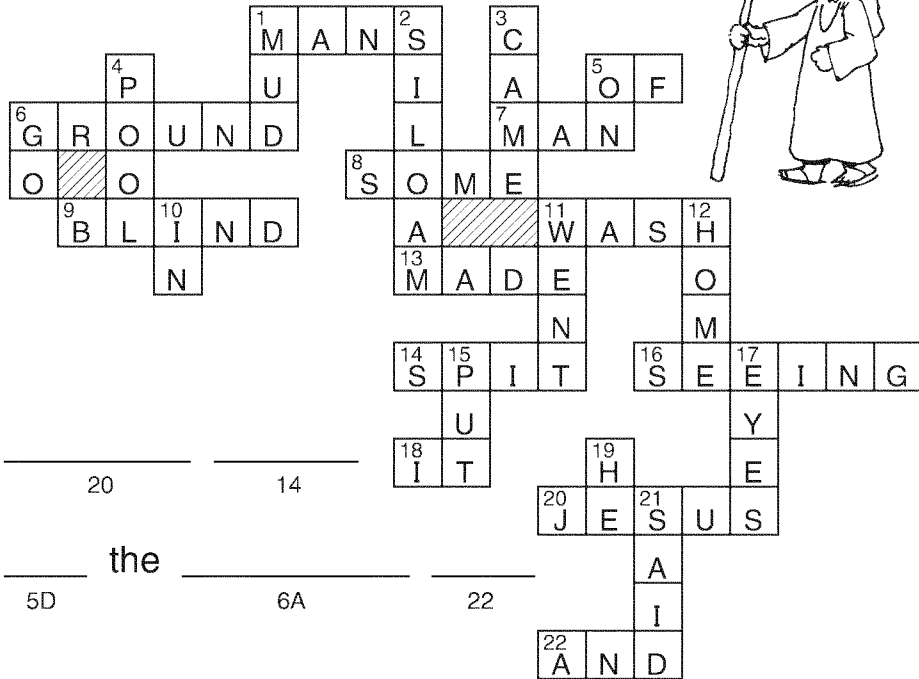
Enter your **SECRET CODE** to unlock games @  
[games.childrensbulletins.com](http://games.childrensbulletins.com)

**SECRET CODE**  
**JMJQY5**



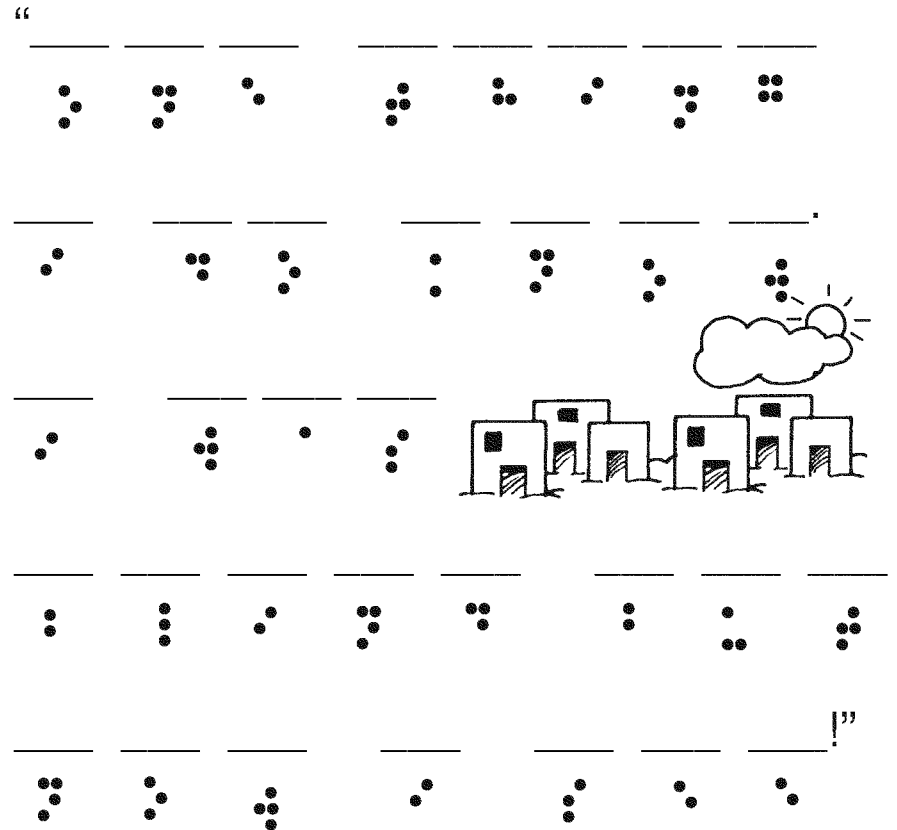
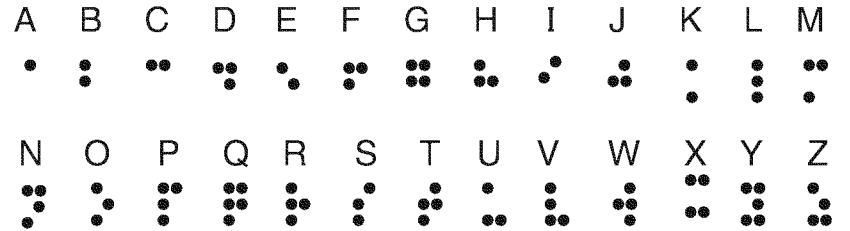
Many people thought blindness was a punishment for sin. Jesus said it wasn't. He said this man's blindness would show the work of God!

Copy the words from the crossword puzzle onto the lines to find what happened next.



The Pharisees questioned the man about Jesus. They said Jesus must be a sinner because He had healed on the Sabbath. What did the man say?

Use the Braille alphabet to find the answer.



\_\_\_\_\_

20                      14

\_\_\_\_\_

the \_\_\_\_\_

5D                      6A                      22

\_\_\_\_\_

13                      8                      1D

\_\_\_\_\_

the \_\_\_\_\_

19                      15                      18                      5D                      9                      1A

\_\_\_\_\_

17                      6D                      11A                      10                      4

\_\_\_\_\_

\_\_\_\_\_” The \_\_\_\_\_

5A                      2                      7                      11D

\_\_\_\_\_

22                      3                      12                      16

\_\_\_\_\_!