

FAMILY CAMP 2025

June 28th - July 6th

Welcome!

Sunset Point Christian Camp welcomes you to Family Camp 2025! May this week be a powerful time of fellowship and spiritual growth for you and your family.



What's Inside?

- Need to know information
- Family Camp 2025 Calendar
- Donation Card
- Through the Lens, Photo Challenge details
- Other fun filled information



Fun Facts...

Did you know?

OVER THE COURSE OF FAMILY CAMP LAST YEAR:

- **800 - 1000+ PEOPLE WERE ON SITE AT ANY GIVEN TIME THROUGHOUT THE WEEK**
- **6 - 8 PEOPLE WERE BAPTIZED.**
- **APPROXIMATELY 2268 MEALS WERE SERVED OVER THE COURSE OF EIGHT DAYS.**
- **871 ORDERS OF FRENCH FRIES & POUTINE WERE SERVED. THAT EQUALS APPROXIMATELY 720 LBS OF FRENCH FRIES!**

*"Taste and see that the Lord is good; blessed is the one who takes refuge in him."
- Psalm 34:8*



Family Camp Feedback

- **FIRST TIME ATTENDEES IN 2024 HAD A GREAT EXPERIENCE & HAVE JOINED OUR CAMP FAMILY AS ANNUAL RV OWNERS.**
- **WE ALSO HEARD FROM SEVERAL ATTENDEES FROM 2024 THAT THE SERVICES WERE WONDERFUL/VERY ENRICHING & THAT THE FOOD WAS EXCEPTIONAL.**

Family Camp Touch Points:

What you need to know (Important, please read) ...

WASHROOM CLEANING - THE MAIN WASHROOMS ADJACENT TO THE CAMP OFFICE WILL BE CLOSED DAILY FROM 10 A.M. - 11:00 A.M. FOR CLEANING BY OUR HOUSEKEEPING STAFF. OUR STAFF WORK VERY HARD TO MAINTAIN OUR FACILITIES FOR YOUR ENJOYMENT, AND YOUR COOPERATION IS GREATLY APPRECIATED IN THIS MATTER. ALL WASHROOMS WILL BE CLEANED DAILY ON A STAGGERED SCHEDULE AND STAFF WILL POST SIGNAGE WHEN CLEANING IS IN PROGRESS. WHILE THE MAIN WASHROOMS ARE BEING CLEANED, YOU MAY ACCESS THE MAIN TABERNACLE, TUCK SHOP, OR THE CHRISTIAN CENTER WASHROOMS.

VEHICLE PARKING FOR RV SITES - ONLY ONE VEHICLE PER RV SITE IS PERMITTED TO AID IN ROADWAY CONGESTION. PLEASE ENSURE YOUR VEHICLE IS NOT PARKED ON ROADWAYS OR FIELDS FOR THE CONVENIENCE OF OTHER CAMPERS AND CAMP STAFF. UNDERSTANDING THE NEED FOR ADDITIONAL PARKING PLEASE SEE THE CAMP ADMINISTRATOR FOR OVERFLOW PARKING LOCATIONS.

- AC UNITS -**
- WHEN RUNNING AC PLEASE KEEP WINDOWS CLOSED SO THE CAMP WON'T EXCEED ELECTRICAL CAPACITY.
 - DO NOT RUN AC WHEN NOT IN RV OR RESIDENCE.
- YOUR COOPERATION IS GREATLY APPRECIATED.

QUITE TIME - PLEASE ENSURE QUIET TIME IS OBSERVED (11 P.M. TO 7 A.M.).

CAMP GATES - THE CAMP GATES ARE SCHEDULED TO OPEN AT 7:00 A.M. AND CLOSE AT 11:00 P.M. WHEN ENTERING SITE OUTSIDE OF THESE HOURS (11:00 P.M.-7:00 A.M.), YOU WILL NEED A PIN TO ENTER THE PROPERTY. THE PIN FOR ALL FAMILY CAMP GUESTS WILL BE 2025#. YOU WILL NEED TO EXIT YOUR VEHICLE AND PUSH THE PIN ON THE RESPECTIVE KEYPAD APPLICABLE TO THE GATE YOU WANT TO OPEN. WHEN EXITING THE PROPERTY, PLEASE DRIVE SLOWLY TOWARDS THE GATE. THE GATE WILL AUTOMATICALLY OPEN AS THE SENSORS DETECT YOUR VEHICLE AND WILL AUTOMATICALLY CLOSE BEHIND YOU.

VOLUNTEER SIGN UP - THERE WILL BE A VOLUNTEER SIGN UP SHEET AVAILABLE IN THE CHRISTIAN CENTER REQUESTING VOLUNTEERS TO ASSIST WITH TAKE DOWN AND CLEAN UP ON SUNDAY, JULY 6TH. CAMP STAFF HAVE A VERY QUICK TURNOVER TO PREPARE FOR THE NEXT GROUP AND YOUR SUPPORT AND HELP IS GREATLY APPRECIATED. PLEASE CONSIDER SIGNING UP FOR ONE OF THE TASKS LISTED.

ATV/MOTORCYCLE USE - IS NOT PERMITTED ANYWHERE ON THE GROUNDS DURING FAMILY CAMP.

BICYCLES - FOR PARENTS WITH CHILDREN WHO HAVE THEIR BICYCLES AT CAMP, PLEASE ENSURE BICYCLES ARE NOT LEFT ON ROADWAYS OR OTHER OUTDOOR SPACES. BICYCLES SHOULD REMAIN ON YOUR RESPECTIVE SITE WHEN NOT IN USE.

WASTE REMOVAL - PLEASE NOTE THAT THERE ARE DUMPSTERS LOCATED AROUND CAMP FOR YOUR WASTE. PLEASE ENSURE THAT THE LID IS CLOSED AFTER EACH USE. ADDITIONALLY, CAMP NOW HAS ONE DUMPSTER SPECIFICALLY FOR CARDBOARD THAT IS LOCATED ON THE NORTH-EAST SIDE BEHIND THE CHRISTIAN CENTER. PLEASE BREAK DOWN ALL CARDBOARD BEFORE PLACING IT IN THE RECEPTACLE.

PET WASTE - PLEASE ENSURE ALL PET WASTE IS CLEANED UP AND DISPOSED OF INTO THE PROPER RECEPTACLES PROVIDED. OUR CAMP STAFF WORK HARD TO MAINTAIN THE BEAUTIFICATION OF SUNSET POINT CHRISTIAN CAMP. YOUR ASSISTANCE IN THIS MATTER IS GREATLY APPRECIATED.

PICNIC TABLES - PICNIC TABLES LOCATED IN THE RV SITES ARE TO REMAIN IN THEIR RESPECTIVE LOTS.

PUTT PUTT MINI GOLF - WHEN USING THE PUTT PUTT MINI GOLF, PLEASE ENSURE GOLF CLUBS AND BALLS ARE RETURNED TO THE SHED AND ORGANIZED FOR THE NEXT USERS. MISUSE OF AMENITIES MAY RESULT IN THE AMENITY HAVING SCHEDULED HOURS, OR BE UNAVAILABLE DURING THE DURATION OF CAMP.

BOTTLED WATER - DURING OFFICE HOURS 18 L JUGS OF WATER CAN BE PURCHASED AT THE CAMP OFFICE FOR \$8 PER BOTTLE.

EMERGENCY - FOR ALL EMERGENCIES PLEASE CALL THE CAMP OFFICE AT 780-924-3533 OR BY **TEXTING ONLY** 780-838-6736.

LAUNDROMAT - PLEASE NOTE THERE IS A LAUNDROMAT AVAILABLE IN THE BASEMENT OF THE CHRISTIAN CENTER DURING OFFICE HOURS, MONDAY TO FRIDAY, 8 A.M. TO 2 P.M., DOORS WILL BE LOCKED DAILY AT 4 P.M. ACCESS WILL BE PROVIDED THROUGH THE NEXT GEN LOUNGE (OFF THE CHRISTIAN CENTRE LOBBY). WASHER AND DRYERS TAKE LOONIES AND QUARTERS, AND THE CAMP HAS LAUNDRY DETERGENT AND BOUNCE SHEET KITS FOR PURCHASE FOR \$1 PER BAG (1 LAUNDRY SHEET, 1 BOUNCE SHEET).

NEXT GEN LOUNGE - THE NEXT GEN LOUNGE WILL REMAIN CLOSED DURING REGULARLY SCHEDULED CAMP ACTIVITIES. ON RAINY DAYS, IT WILL BE OPEN FOR USE DURING NON-SERVICE/ACTIVITY TIMES. ANYONE UNDER 16 MUST BE SUPERVISED BY AN ADULT. PLEASE ENSURE THE SPACE IS CLEAN AND TIDY AFTER USE AND ITEMS ARE PUT BACK IN THEIR RESPECTIVE PLACES FOR THE ENJOYMENT OF ALL USERS.

RESPECT FOR CAMP GARDENS - CAMP STAFF WORK HARD TO PROVIDE BEAUTIFUL SPACES, INCLUDING OUR FLOWER GARDENS. PLEASE REFRAIN FROM CLIMBING ON ANY GARDENS, (E.G. FRONT FLAG GARDEN).

CAMP FIRE PITS - THROUGHOUT THE WEEK OF CAMP, THERE ARE SEVERAL SCHEDULED ACTIVITIES TAKING PLACE AT THE CAMP FIRE PIT ON THE EAST SIDE. PLEASE NOTE THAT THE ELIM FIRE PIT IS FOR ELIM GUESTS ONLY.

RECREATION - ASIDE FROM THE PUTT PUTT MINI GOLF AND PLAYGROUNDS, CAMP GUESTS CAN UTILIZE THE FRONT BASKETBALL AND VOLLEYBALL COURTS. VOLLEYBALLS, BASKETBALLS AND SOCCER BALLS ARE IN THE DECK BOX OUTSIDE OF THE CAMP MAINTENANCE OFFICE AT THE BACK OF THE MANAGERS RESIDENCE. PLEASE ENSURE QUIET TIME IS OBSERVED (11 P.M. TO 7 A.M.).

WATER CONSUMPTION - DURING CAMP WATER CONSUMPTION WILL BE VERY HIGH. TO ENSURE A SMOOTH CAMP, WITH MINIMAL WATER ISSUES, PLEASE HELP US BY CONSERVING WATER WHERE POSSIBLE.

FIREWOOD - IF YOU NEED FIREWOOD, PLEASE PLACE YOUR ORDER BY 2:00 P.M. BY VISITING OR CALLING THE CAMP OFFICE, TO ENSURE AN ESTIMATED DELIVERY TIME BY 4:00 P.M. FIREWOOD IS \$35 PER GATOR/HONDA LOAD. YOU MAY PAY WITH CASH AND E-TRANSFERS ARE ALSO ACCEPTED BY USING PAYMENTS@SUNSETPOINTCAMP.CA



INVESTING IN A LEGACY OF FAITH: JOIN THE MOVEMENT

As we look to the future, we invite you to consider the impact your financial stewardship can have on generations to come. By giving to Sunset Point Camp you're not just supporting a program—you're investing in the faith, growth, and development of your children, grandchildren, and countless others. Your generosity ensures that this camp will continue to be a place where hearts are nurtured, where the gospel is lived out, and where future leaders can encounter God in a profound way. Every gift is a step toward building a lasting legacy!

WAYS TO GIVE:

1. Online (QR Code)

To give online simply scan the QR Code with your phone!



2. Online (Website)

Go to www.sunsetpointcamp.ca/giving-payments



3. E - Transfer

E - Transfers can be sent to give@sunsetpointcamp.ca

Great things happen in and through our Camp; you can help by giving as little as \$20 today!
Tax Receipts will be issued. We are a federally registered not-for-profit organization
(No. 118780428 RR 0001).

Calendar:

June 28 - July 1



SATURDAY



SUNDAY



MONDAY




TUESDAY

Kids & Family= Black

Youth= Teal

Adults = Gold



**WELCOME!
ARRIVE TO
CAMP.**

**CHECK-IN FOR
RVS, CC DORMS,
AND ELIM LODGE
(2 P.M.)**


**WORLD CUP
(2 P.M.)**

**WOMEN WITH
PADDLES
(8:30 P.M.)
@ ELIM LODGE**

**SCAVENGER
HUNT
(2 P.M.)**

**GOLF
TOURNAMENT -
REGISTERED
GOLFERS ONLY.**

**DOUGH BAKE
FOLLOWING THE
EVENING
SERVICE.**



CANADA DAY!

**BOATING &
WATER DAY
(2 P.M.)**

**CANADA DAY
BBQ (4:30 P.M.)
@ CC.**

**CANADA DAY
FIREWORKS
(DUSK)
@ LARGE
SPORTS FIELD.**

Calendar:

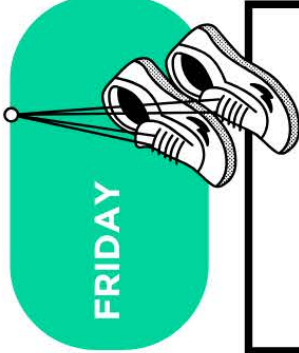
July 2 - July 6



WEDNESDAY



THURSDAY



FRIDAY



SATURDAY



SUNDAY

FAMILY BBQ & CARNIVAL
(11 A.M. - 2 P.M.)
\$3/PERSON, CASH, DEBIT/CREDIT.

PRETEEN CAMPFIRE, SMORES & GAMES
(8:30 P.M.)
FOR KIDS ENTERING GRADE 5 OR 6 IN SEPTEMBER.

NINE SQUARE TOURNNEY
(9:30 P.M.)



CRAFTS
(2 P.M.)

MINIGOLF MASTERS
(2 P.M.)

MEN WITH PADDLES
(8:30 P.M.)

@ **ELIM LODGE**

MANTRACKER
(9:30 P.M.)

TALENT SHOW
(2 P.M.)

TAKE A HIKE FOR COFFEE
(1:30 P.M.)

@ **TUCK SHOP.**
APPROX. 5 KM WALK TO BEACHSIDE GRIND AND BACK TO CAMP.

FOOTBALL GAME
(2 P.M.)

FIRE
(9:30 P.M.)

YOUNG ADULTS VOLLEYBALL GAME
(2 P.M.)

@ **FRONT FIELD**
(GRADE 12 & OLDER).

PHOTO CONTEST SUBMISSIONS DUE
(1 - 3 P.M.)

YOUNG ADULTS BONFIRE WORSHIP SESSION
(9 P.M.)

@ **COMMUNITY BONFIRE PIT**
(GRADUATED (GRADE 12 & OLDER).

ROOM CHECK-OUT FOR ELIM LODGE AND CC DORMS (11 A.M.)

VOLUNTEER CAMP CLEANUP
(11:30 A.M. - 12:30 P.M.)

LUNCH
(12:00 - 1:30 P.M.)

CHECK-OUT FOR RVS, CC, AND ELIM LODGE
(2 P.M.)

SEE YOU AT FAMILY CAMP 2026!



In the community

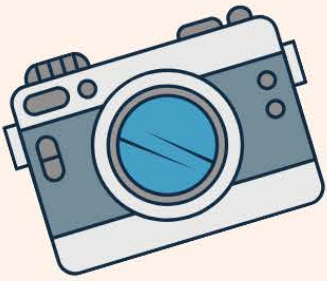
Did you know, approximately 2.4 km away, Alberta Beach, founded in 1920, offers a variety of amenities you may want to visit during your stay at Camp? One amenity Alberta Beach provides is **K's General Store**. With its cozy atmosphere, K's General Store is a wonderful place to come for a quick bite to eat, select coffees, and delicious sweets/snacks. Additionally, Alberta Beach is home to the **Alberta Beach Museum**, which is a great place to spend an afternoon for people of all ages. **Beachside Grind** is the latest addition to the Alberta Beach community. Located across the road from Beachside Market, Beachside Grind offers an assortment of specialty coffees, beverages, and baked goods perfect for all coffee enthusiasts. Lastly, Alberta Beach offers several convenient amenities, such as a grocery store, market, convenience store, laundromat, gas station, and post office.



Camp Cleanup (volunteers needed)

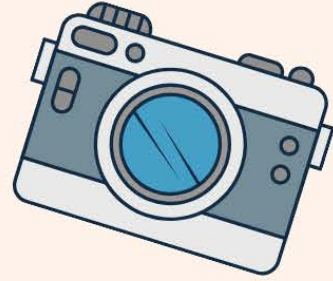
In 2024, a total of 790 volunteer hours were recorded, contributing a monetary value of \$17,380 to the Camp. Sunset Point Christian Camp is deeply grateful to all of our volunteers whose dedication continues to support the camp to fulfill its mission.

Family Camp has been a source of joy for many over the years. Please consider offering a helping hand on July 6th (the last day of Family Camp), from 11:30 A.M. to 12:30 P.M. to clean up from Family Camp. A task as simple as sweeping the main lobby helps the Camp staff prepare for the next group of guests. Signup sheets will be posted throughout the week. Thank you for your support in this matter!



Through the Lens

Photo Challenge



Join our **Through the Lens**, Photo Challenge at Family Camp! Put your creativity to the test in this photo challenge for all ages! Three lucky winners will be awarded special prizes. **Submissions are due by Saturday, July 5th at 3 P.M.**

How it works:

1. Get creative! Take a picture of at least **three out of five or all five** themes presented below with your own special touch and interpretation (1 photo per theme)!
2. Post your raw or slightly edited photos on both your own and/or the Camp's Facebook page or Instagram page and tag us at @FamilyCamp2025
3. Upon seeing the tagged post, you will be entered into the challenge. After the deadline for submissions, we will then have several volunteer judges choose the 1st, 2nd, & 3rd place winners.
4. Results will then be posted on our social media pages, along with a formal message to the lucky winners.

Themes:

1. **Nature:** Capture a moment in nature that makes you reflect on God's presence in creation.
2. **Action Shot:** Capture an action-filled moment (e.g. a camp or family sport, a bird flying, etc.).
3. **Church Life:** Capture a moment that demonstrates how fellowship among believers can embody or reflect the Body of Christ (e.g. church service, campfire, an act of kindness or humility, etc.).
4. **Inter-Generational:** Capture a multigenerational photo that is of importance to your core values (e.g. a picture that embodies the passing of knowledge or faith through generations, a picture that has several generations present, etc.).
5. **Light:** Submit a photo of light, a key part of the gospel message: the light of Christ (e.g. sunrise, sunset, a candle, etc.).