



# The Scroll

## DECEMBER 2025



"WE ARE A SPIRIT DRIVEN  
CHRISTIAN COMMUNITY  
OF ENGAGED DISCIPLES, CALLED TO  
SERVE, LOVE AND FORGIVE."  
WE ARE A RECONCILING IN  
CHRIST CONGREGATION.



## Pastor's Note

FROM PASTOR HEIDI

Blessed Advent, St. Luke Siblings in Christ,

When I was a kid, I came to LOVE the version of "I Heard the Bells" on a Winter's Solstice album, sung by John Gorka.

"I heard the bells on Christmas day, their old familiar carols played; wild and sweet, the words repeat of peace on earth, good will to men."

When my dad was deployed over Christmas one year, I welled with tears as I sang with my brother on Christmas Eve, "But in despair I bowed my head: 'There is no peace on earth,' I said, 'for hate is strong and mocks the song of peace on earth, good will to men.'"



## Inside:

|                              |       |
|------------------------------|-------|
| Pastor's Note.....           | 1-2   |
| Presidential Note .....      | 3     |
| Ministry News.....           | 3-5   |
| Music News.....              | 6     |
| Grins & Giggles News.....    | 7     |
| Council Mtg Minutes .....    | 8-10  |
| Treasurers' Report.....      | 11-13 |
| Kids Page.....               | 14    |
| Prayer Requests.....         | 15    |
| Dec. Celebrations.....       | 16    |
| Dec. Schedule to Serve ..... | 17    |
| Dec. Calendar.....           | 18    |

Follow Us! @stlukegf

continued pg. 2



*continued from pg. 1*

Still, this lyric makes my throat tighten and my eyes sting because peace seems so unattainable; so far from the lived reality of too many precious beings on this planet. Yet, God promises again and again to come into our midst, to stand with us, to suffer with us, and to work with us for a better world.

So, we will continue to gather in Jesus' name!

We will continue to give of ourselves, and our time and our money.

We will continue to proclaim with the bells – "Then pealed the bells more loud and deep: "God is not dead, nor doth he sleep. The wrong shall fail, the right prevail, with peace on earth good will to men." Peace on Earth, good will to all!

The Holy Spirit calls us and equips us to be persistent in the message of God's grace, God's love, and God's justice! We will persist, and sing, and pray, and gather, and serve, and work to bring about God's vision for a compassionate and peaceful world.

Let us gather together, as we prepare again this Advent and Christmas to be faithful vessels for this much needed message of persistent peace and love!

Singing out (Ringing out) with you in Christ's name,

Pastor Heidi Johnston



## Presidential Notes

BY FAWN DEMELLO, COUNCIL PRESIDENT



What do we have to be thankful for? One thing for sure is what we have right now at St. Luke Lutheran Church. Who we have right now. Those that visit our church.

We are strong. We have grown. We need to continue to grow. How do we do that?

As leaders of the church, we need to listen to the congregation with concerns/issues.

New Members is a way of growing

Being in the community

Collaborations with the high school and the many groups that use our facilities  
Grins and Giggles has brought families into our congregation

Be mindful of things as we start this new calendar year in our church. Be the **Reason** for this particular Advent Season in knowing that the Holy Trinity is with us each and every day.

"give thanks in all circumstances; for this is God's will for you in Christ Jesus." 1 Thessalonians 5:18  
Peace  
Fawn

## End of Year Giving FROM THE FINANCE COMMITTEE

A reminder that there are end of year charitable contribution deadlines.

Check contributions must be postmarked December 31 or sooner to be credited to the 2025 fiscal year. Online contributions must be made by December 31.

To qualify as a 2025 Required Minimum Distribution (RMD) the contribution must be DEPOSITED by December 31. The last deposit for St. Luke in 2025 will be December 28.

If you are paying your 2026 contribution in 2025, please indicate the year on your check or online contribution.

## Support Ledyard Social Services BY LEIGH SAMMONS



Help feed a family in need this Thanksgiving.  
Ledyard Social Services is collecting financial contributions towards their Stuff-a-Cruiser event. Cash contributions can be put in an envelope, marked LSS, and placed in the offering plate. **Checks must be made out to "Ledyard Social Services"** and also placed in the offering plate.  
Thank you for helping out neighbors in need!



We have exciting opportunities coming up in the next few months. We welcome you to participate in a few, many, or all of them!

November 23: Pr. Mark Lingle will lead an adult forum after worship on the possibility of St. Luke becoming an intern site for seminarians. Join us for the discussion! Child care and snacks will be provided.

November 30: Introducing the 2025 Christmas Pageant! During the Advent Festival, we will dig into the needed costumes for this year's pageant, spearheaded by Noelle Hale, with support from the LLL team. Everyone is invited to participate in some way...mending and ironing costumes, wrangling kids during rehearsals, taking part in the pageant, helping with any sets that need to be built or fixed. Join us! Pageant rehearsals will be December 7 and 14 following worship. The pageant will be presented during worship on December 21.

Middle School Youth Group: We are hoping to start a middle school youth group, for youth in 5th -8th grades. We are in need of volunteers to help with this. We are anticipating splitting Kids' Corner, once per month, to allow the middle-schoolers to get to know each other, develop friendships, and plan for possible activities.

The Adult Forum fall book discussion of How to End Christian Nationalism was well-received and encouraged thoughtful, reflective conversation. We are looking ahead to 2026 and some possible topics such as end of life planning, social security as we age, monthly presentations by members, and resuming the series The Chosen, possible other book groups.

## *CROP Walk Results*

BY ELAINE REMONDI-SIMPSON

A total of \$23,676.76 was raised by the Ledyard/Gales Ferry partner groups. That is the second highest total in recent years. Many thanks to the 21 St. Luke walkers and the generous donors who supported them in raising \$3,334.59. A special thank you to Cathy Freamon for educating and serving at the CROP Walk breakfast for two years in a row. Many thanks to Diane Hansen for representing St. Luke at the post walk meeting.

Church World Services does not close the account until December 31, 2025. If you missed a chance to donate or are itemizing on you tax return and are in need more charitable donations your donations are still welcome. Donate at [events.crophungerwalk.org](https://events.crophungerwalk.org).



### **St. Luke Blood Drive 12/4**

It's the most wonderful time of the year to give a special gift that keeps on giving. If you have ninety minutes or so to spare, you can do just that by becoming a donor at our next Red Cross Blood Drive on Thursday December 4th from 1:30 - 6:30 PM. This special gift may turn out to be life-saving for a family member, friend or neighbor. In the true spirit of Christmas, you may end up helping a complete stranger, a brother or sister in need. One thing is certain; you will make a life changing difference in someone's life. Register at [RedCrossBlood.org](https://RedCrossBlood.org).





# ***WE'RE TIRED (BUT HAPPY!)***

*THE TAG SALE WAS A LOT OF WORK, BUT IT WAS WORTH IT!*

**BY KAREN AND MIKE WUESTHOFF**

## *Ministry News*



Thanks for all the good stuff! We sorted it, arranged it, priced it, sold it, and came away with \$5,828 that we'll add to grant funds we use to buy beds and cribs for people in financial need.

The weather was perfect for a tag sale – a bit rainy at times but not enough to make people stay at home (thank you, Lord!). Everything came in early enough in the week that we were able to sort, display, and price it before the start of the sale.

All of the superheroes were busy saving the world, but we had lots of help from ordinary heroes setting up and running the sale, and a very efficient cleanup crew on Saturday. We brought in and set up tables, clothing racks, and bookcases from our storage shed on Sunday, arranged and priced sale items Monday through Friday, held the sale Friday from 6 to 8 pm and Saturday from 8 to 2, and had the place cleaned up well ahead of the Saturday evening AA meeting.

Special thanks to a team from the Thames Valley Council for Community Action (one of many agencies that refer people to the furniture bank), who helped with the sale and rented a truck to take leftovers to Goodwill, and to some wonderful people who loaded up their cars and trucks with leftovers to take to local charities at the end of the sale.

With apologies to anyone we may have left out (please sign in if you help!), thanks to: Sue Anderson, Mike and Cyndi Arnold, Kristian and Emilee Balinski, Susan Bibeau, Sue Conley, Sue and Aiden Davis, Andy and Debbie Eld, Zhy Ellis, Dave and Suzanne Etris, Camille Felty, Mark Goddette, Jennifer Goodwin, Noelle Hale, Diane Hansen, Pr. Heidi, Wesley, and Oliver Johnston and friends, Althea Koschmieder, Carolyn Kracke, Joan Lambert, Mark and Louise Larson, Linda Martin, Al Nordquist, Norm and Judy Owsley, Larry and Laura Parsons, Kasey Peek, John and Julie Perkins, Mark Pitluck, Mike and Rebecca Richardson, Leigh Sammons, Harleigh Spena, Brian Sturm, Pat and Erica Sullivan and Sam, Carson, Raegan Aberle, Lindsay, Erica, and Janeese Watson, Marty and Pat Wood, and the team from TVCCA. God bless you all!



*TVCCA volunteers with tag sale leftovers headed to Goodwill*



# Community Christmas Concert

Friday, December 5, 7 pm

*Tono Dolce Community Choir  
JuBellation Handbell Choir  
St Luke Senior Choir  
Ledyard HS Carolers  
Orchestra*

**St. Luke Lutheran Church  
1830 Route 12  
Gales Ferry, CT**

*Handicap accessible*

[stlukegf.org](http://stlukegf.org)





## *Grins & Giggles Preschool News*

**BY NANCY RUPERT**

It always seems that at this time of the year time just speeds up! After a successful Halloween party with all the parents dressing up to pass out 'treats' we plunged right into our 'Animal Weeks'. From the barnyard to the jungle to the deserts our animals were varied! We learned what animals migrate, hibernate and adapt to their surroundings. Pigs, mice, cows, hippos, elephants, monkeys and ducks were featured. We practiced using scissors for an animal collage and even got to pat a live baby goat (kid). The letters "H", "I", "J" and "K" were practiced. We had our bi-annual Parent Teacher Conference to show the parents their child's progress in school. Our Thanksgiving weeks concentrated on giving thanks and sharing what you have with those in need.

On a sad note, we needed to say good-bye to Lyanna Andersson on the 14th of November. Her family was being relocated to Italy. On a positive note, we said hello to Gabriel Grenier who is joining us on November 17th.

The month of December will be sparkly and full of excitement as we prepare to celebrate Jesus' birthday!

# *Minutes of the October Congregation Council Meeting*

## **St. Luke Lutheran Church Minutes of the Congregation Council Meeting October 16, 2025**

Council Members in Attendance: Fawn DeMello, Pastor Heidi Johnston, Mark Larson, John Perkins, Erica Sullivan, Brad Dame, Kellie August, Alan Nordquist, Janis Vajdos, Pat Robbins

Recording secretary: Liese Zitzkat

The meeting was called to order at 6:03 PM by Council President Fawn DeMello.

### Devotions

- Kellie August led devotions.
- November devotions will be led by Brad Dame, October by Alan Nordquist.

### Approval of Agenda

- Motion was made (Fawn DeMello) and seconded to approve the agenda for the October 16, 2025 Council meeting. There was no discussion. Motion carried.

### Approval of September 18, 2025 Minutes

- Motion was made (Fawn DeMello) and seconded to approve the September 18,

2025 Council minutes. There was no discussion. Motion carried.

### President's Remarks

- An Executive Meeting report will be sent out monthly going forward.
- Motion was made (Fawn DeMello) and seconded to accept the money of \$21,354.40 from Employee Retention Tax Credit (ERTC) for the first and second quarters of 2021 and record the amount in the Unrestricted Gifts Fund. Following discussion, the motion carried.
- The Advent Festival will take place November 30, 2025.
- The Executive Team is reviewing the Constitution for approval at the Annual Meeting.
- The Council will start discussing the budget at the November 20, 2025 Council meeting. Budget revisions will be discussed at the December 11, 2025 Council meeting, which will be held via Zoom.

### Church Members' Comments/Concerns

- None

### Financial Reports

- Please refer to the Treasurer's Report, Balance Sheet, and Consolidated Fund Activity Report documents.
- Stewardship letters will be mailed out early next week.
- The motion to accept the FY 2024 Audit Report was rescinded. The Audit Report is being finalized and will be up for approval at the November Council meeting.



# *Minutes of the October Congregation Council Meeting*

## New Business

- None

## Other New Business

- None

## Pastor's Report

- Please refer to the Pastor's Report document.
- Motion was made (Pastor Heidi Johnston) and seconded that the Council approve Pastor Heidi's 2026 sabbatical as described in her Sabbatical Proposal. Following discussion, the motion carried.
- Pastor Heidi provided information about potentially hosting a pastoral intern in 2027 or later. There will be an article in the November Scroll with more information.

## Purpose Teams Reports

- Evangelism
  - Please refer to the separate Evangelism Report.
  - Motion was made (Pat Robbins) and seconded to accept the revisions to the Welcome Statement for the Reconciling Works website, St. Luke Lutheran Church website, and Bulletin. There was discussion, and edits were made. The motion carried, with the edits.
- Fellowship
  - Please refer to the Fellowship Team Report document.
- Lifelong Learning
  - Please refer to the Lifelong Learning Report document.
- Outreach Ministry
  - Please refer to the Outreach Ministry Report document.
- Worship
  - Please refer to the Worship Team Activity Report and Director of Music and Worship Technology Report documents.

## Support Team Reports

- Communications
  - Please refer to the Communications Report document.
- Facilities
  - Please refer to the Facilities Report document.
- Parish
  - Please refer to the Church Office Report document.
- People
  - Please refer to the People Support Report document.
  - Motion was made (Mark Larson) and seconded to accept the new title for the Director of Music and Worship Technology. Following discussion, the motion carried.
  - Motion was made (Mark Larson) and seconded to accept the proposed revisions to the job description for Director of Music and Worship Technology. Following discussion, the motion carried.
  - Motion was made (Mark Larson) and seconded to accept the proposed changes to the Bookkeeper job description. Following discussion, the motion carried.

# *Minutes of the October Congregation Council Meeting*

## Motion to Accept All Reports

- Motion was made (Fawn DeMello) and seconded to accept all reports. There was no discussion. Motion carried.

## Old Business:

- None

## Items for Follow-Up Prior to Next Meeting

- Next Council meeting is scheduled for November 20, 2025.

## Motion to Adjourn and Closing Prayer – Lord’s Prayer

- Motion was made (Fawn DeMello) and seconded to adjourn the meeting. There was no discussion. Motion carried.
- The meeting adjourned at 8:14 PM, followed by the Lord’s Prayer.

Respectfully submitted,

Liese M. Zitzkat, Recording Secretary



# Treasurer's Report for October, 2025

St. Luke Lutheran Church  
Treasurer's Report for Month Ending  
October 31, 2025

November 14, 2025

## Income Summary

Pledged offerings for the month of October were approximately \$8.6K below the monthly budget, resulting in pledged offerings for the year being approximately \$3.2K below the YTD budget. Grace Giving for the month of October was above the monthly budget by approximately \$3K, and far exceeded our typical monthly grace giving. With all offering sources combined, our YTD total offerings are approximately \$8.2K below the YTD budget.

Grins & Giggles income for the month of October was \$405 greater than the monthly budget, resulting in YTD Grins & Giggles income as of the end of October being approximately \$7.0K greater than the YTD budget.

We also earned \$410 in investment income in the month of October from our two Thrivent CD's.

With all budgeted income sources combined, our actual total budgeted income for the month of October was \$4906 less than the monthly budget, making the YTD total budgeted income \$318 greater than the YTD budget.

A summary of the YTD October 2025 budgeted income is provided in the table below:

| Account Name                             | Period Activity    | Monthly Budget     | YTD Balance         | Budget YTD          | Annual Budget       | Annual Budget Remaining |
|--|--------------------|--------------------|---------------------|---------------------|---------------------|-------------------------|
| Pledges                                  | 19,417.95          | 28,000.00          | 277,763.98          | 281,000.00          | 338,147.00          | 60,383.02               |
| Grace Giving                             | 7,026.91           | 4,000.00           | 38,589.57           | 44,000.00           | 54,000.00           | 15,410.43               |
| Loose Cash Offering                      | 441.00             | 300.00             | 3,905.55            | 3,000.00            | 3,600.00            | (305.55)                |
| Special Envelopes                        | 0.00               | 0.00               | 520.00              | 1,000.00            | 2,600.00            | 2,080.00                |
| <b>Offerings</b>                         | <b>\$26,885.86</b> | <b>\$32,300.00</b> | <b>\$320,779.10</b> | <b>\$329,000.00</b> | <b>\$398,347.00</b> | <b>\$77,567.90</b>      |
| Building Use                             | 125.63             | 208.00             | 2,842.52            | 2,080.00            | 2,500.00            | (342.52)                |
| <b>Structures Income</b>                 | <b>\$125.63</b>    | <b>\$208.00</b>    | <b>\$2,842.52</b>   | <b>\$2,080.00</b>   | <b>\$2,500.00</b>   | <b>(\$342.52)</b>       |
| Investments Div/Interest                 | 410.21             | 225.00             | 2,305.13            | 1,550.00            | 2,000.00            | (305.13)                |
| <b>Other Income</b>                      | <b>\$410.21</b>    | <b>\$225.00</b>    | <b>\$2,305.13</b>   | <b>\$1,550.00</b>   | <b>\$2,000.00</b>   | <b>(\$305.13)</b>       |
| Grins & Giggles Income - Donations       | 0.00               |                    | 391.20              |                     |                     |                         |
| Grins & Giggles Income-Tuition           | 8,405.00           | 8,100.00           | 75,945.00           | 69,650.00           | 85,850.00           | 9,905.00                |
| Grins & Giggles Income-Registration fees | 150.00             | 50.00              | 985.00              | 650.00              | 700.00              | (285.00)                |
| <b>Total Grins and Giggles Income</b>    | <b>\$8,555.00</b>  | <b>\$8,150.00</b>  | <b>\$77,321.20</b>  | <b>\$70,300.00</b>  | <b>\$86,550.00</b>  | <b>\$9,620.00</b>       |
| <b>Total Budgeted Income</b>             | <b>\$35,976.70</b> | <b>\$40,883.00</b> | <b>\$403,247.95</b> | <b>\$402,930.00</b> | <b>\$489,397.00</b> | <b>\$86,540.25</b>      |

In addition to budgeted income, there was also \$2502 of unbudgeted income in the month of October, primarily from \$1000 in donations to the Good Samaritan Fund, \$402 in donations to the Memorial Fund, \$945 in in-transit income (donations to St. Luke intended to be donated to other organizations), and other small donations.

## Expense Summary

**Total Budgeted YTD Expenses** of \$409,495.97 is greater than the YTD budget of \$408,024.00 by \$1471.97 as of the end of October. October budgeted expenses were less than the monthly budget by \$729.81.

# Treasurer's Report for October, 2025

**Grins & Giggles YTD Expenses** of \$72,288.21 is greater than the budget of \$70,703.00 by \$1585.21, mostly due to Head Teacher salaries.

**Net Results:** As of the end of October 2025 we have an Actual YTD Total Income of \$503,238.52, and Total Expenses of \$437,647.18, resulting in a difference of \$65,636.34. A high-level year to date summary is in the tables below.

| Account Name   | Period Activity   | Monthly Budget    | YTD Balance         | Budget YTD          | Annual Budget        | Annual Budget Remaining |
|--|-------------------|-------------------|---------------------|---------------------|----------------------|-------------------------|
| Total Budgeted Income                                | \$35,976.70       | \$40,883.00       | \$403,247.95        | \$402,930.00        | \$489,397.00         | \$86,540.25             |
| TOTAL Budgeted Expense                               | \$35,821.19       | \$36,551.00       | \$409,495.97        | \$408,024.00        | \$506,779.00         | \$97,536.67             |
| <b>Budgeted Income/Expense Difference</b>            | <b>\$155.51</b>   | <b>\$4,332.00</b> | <b>(\$6,248.02)</b> | <b>(\$5,094.00)</b> | <b>(\$17,382.00)</b> | <b>(\$10,996.42)</b>    |
| Total Grins and Giggles Income                       | \$8,555.00        | \$8,150.00        | \$77,321.20         | \$70,300.00         | \$86,550.00          | \$9,620.00              |
| Total Grins & Giggles Expense                        | \$6,889.80        | \$6,594.00        | \$72,288.21         | \$70,703.00         | \$87,130.00          | \$14,994.83             |
| <b>Grins &amp; Giggles Income/Expense Difference</b> | <b>\$1,665.20</b> | <b>\$1,556.00</b> | <b>\$5,032.99</b>   | <b>(\$403.00)</b>   | <b>(\$580.00)</b>    | <b>(\$5,374.83)</b>     |
| Total Income   | \$38,478.33       | \$40,883.00       | \$503,283.52        | \$402,930.00        | \$505,255.00         | \$102,398.25            |
| Total Expense  | \$38,282.61       | \$36,551.00       | \$437,647.18        | \$408,024.00        | \$506,779.00         | \$97,536.67             |
| <b>Total Income/Expense Difference</b>               | <b>\$195.72</b>   | <b>\$4,332.00</b> | <b>\$65,636.34</b>  | <b>(\$5,094.00)</b> | <b>(\$1,524.00)</b>  | <b>\$4,861.58</b>       |

## Other Treasurer Activity:

- Reviewed bi-weekly payroll
- Reviewed monthly bank reconciliation
- Worked with congregational volunteer to author stewardship letter

Respectfully Submitted,  
Alan Nordquist  
Treasurer

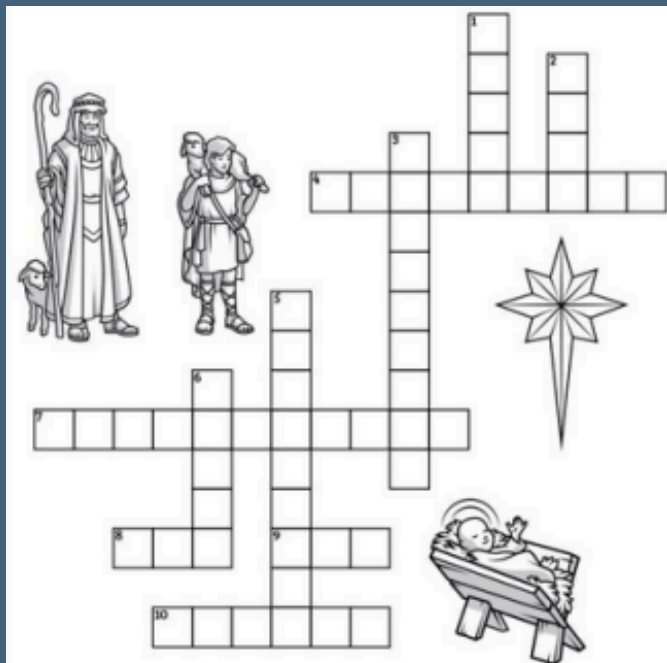


# Consolidated Fund Activity Report October 2025

## St Luke Lutheran Church - Gales Ferry CT Consolidated Fund Activity Report for October 2025

Thursday,

| Account Name                        | Beg Balance                  | Receipts                  | Disbursements             | Transfers/JE's       | End Balance                      |
|-------------------------------------|------------------------------|---------------------------|---------------------------|----------------------|----------------------------------|
| <i>Administrative-Dedicated</i>     |                              |                           |                           |                      |                                  |
| Intransit Items Balance             | 0.00                         | 945.13                    | -                         | -                    | 945.13 Calumet, CROP             |
| Sabbatical Fund Balance             | 9,750.00                     | -                         | -                         | -                    | 9,750.00                         |
| Special Gifts Balance               | 225.01                       | -                         | -                         | -                    | 225.01 for communion bread       |
| Staff Development Balance           | 3,886.15                     | -                         | -                         | -                    | 3,886.15                         |
| <i>Building Fund Balance</i>        |                              |                           |                           |                      |                                  |
| General Building Fund               | 22,745.77                    | 10.00                     | 393.22                    | -                    | 22,362.55                        |
| Sanctuary Renovations               | 4,552.36                     | 10.00                     | -                         | -                    | 4,562.36                         |
| <i>Discretionary Gifts Balance</i>  |                              |                           |                           |                      |                                  |
| Camp Calumet Scholarships           | 700.00                       | -                         | -                         | -                    | 700.00                           |
| Council Discretionary Fund          | 3,107.20                     | -                         | -                         | -                    | 3,107.20                         |
| Good Samaritan Fund                 | 6,780.42                     | 1,000.00                  | 1,073.08                  | -                    | 6,707.34 hunger/homeless mission |
| Pastors' Discretionary              | 13,076.99                    | -                         | 100.00                    | -                    | 12,976.99                        |
| Embellish (Bells of Fire) Fund      | 1,507.43                     | -                         | -                         | -                    | 1,507.43                         |
| <i>Facilities Support-Dedicated</i> |                              |                           |                           |                      |                                  |
| Memorial Garden Balance             | 3,809.68                     | -                         | 133.83                    | -                    | 3,675.85                         |
| <i>Family Ministry-Dedicated</i>    |                              |                           |                           |                      |                                  |
| Family Ministry Activities          | 208.00                       | -                         | -                         | -                    | 208.00                           |
| <i>Fellowship-Dedicated Balance</i> |                              |                           |                           |                      |                                  |
| Fellowship Furnishings              | 6,021.56                     | -                         | -                         | -                    | 6,021.56                         |
| Fellowship Special Events           | 2,534.64                     | -                         | -                         | -                    | 2,534.64                         |
| Flowers Balance                     | (218.10)                     | 25.00                     | 18.98                     | -                    | (212.08)                         |
| General Operating Fund Balance      | 41,774.17                    | 35,976.70                 | 35,803.74                 | -                    | 41,947.13                        |
| <i>Life Long Learning-Dedicated</i> |                              |                           |                           |                      |                                  |
| Ecumenical VBS Balance              | 252.58                       | -                         | -                         | -                    | 252.58                           |
| Grins & Giggles Donations           | 265.47                       | -                         | 17.45                     | -                    | 248.02                           |
| Women's Retreat Balance             | 236.12                       | -                         | -                         | -                    | 236.12                           |
| Long Term Contingency Fund          | 4,042.68                     | 10.00                     | -                         | -                    | 4,052.68                         |
| Memorial Fund Balance               | 6,501.31                     | 401.50                    | -                         | -                    | 6,902.81                         |
| <i>Ministry-Dedicated Balance</i>   |                              |                           |                           |                      |                                  |
| Community Garden Fund               | 56.31                        | -                         | 56.31                     | -                    | 0.00                             |
| Meal Center Balance                 | 1,260.00                     | -                         | -                         | -                    | 1,260.00                         |
| Net Fixed Asset Fund Balance        | 1,918,224.00                 | -                         | -                         | -                    | 1,918,224.00                     |
| <i>Special Programs Balance</i>     |                              |                           |                           |                      |                                  |
| Great Lakes Scrip Program           | 2,443.06                     | 100.00                    | -                         | -                    | 2,543.06                         |
| Unrestricted Gifts Fund Balance     | 93,988.99                    | -                         | -                         | -                    | 93,988.99                        |
| <i>Worship-Dedicated Balance</i>    |                              |                           |                           |                      |                                  |
| Handbell Program Fund               | 1,473.91                     | -                         | 686.00                    | -                    | 787.91                           |
| Special Music Balance               | 2,544.61                     | -                         | -                         | -                    | 2,544.61                         |
| <i>Youth-Dedicated Balance</i>      |                              |                           |                           |                      |                                  |
| ELCA Youth Gathering                | 5,960.48                     | -                         | -                         | -                    | 5,960.48                         |
| Youth Mission Trip Balance          | 522.15                       | -                         | -                         | -                    | 522.15                           |
| <b>Total</b>                        | <b><u>\$2,158,232.95</u></b> | <b><u>\$38,478.33</u></b> | <b><u>\$38,282.61</u></b> | <b><u>\$0.00</u></b> | <b><u>\$2,158,428.67</u></b>     |



## ACROSS

4. \_\_\_\_\_ watched their flocks by night.
7. Mary and Joseph brought \_\_\_\_\_ as a sacrifice to the temple.
8. Angels brought good tidings of great \_\_\_\_\_.
9. There was no room for Mary and Joseph in the \_\_\_\_\_.
10. Jesus lay in a \_\_\_\_\_.

## DOWN

1. The wisemen brought gold, frankincense, and \_\_\_\_\_.
2. The \_\_\_\_\_ appeared in the East.
3. Mary and Joseph traveled to \_\_\_\_\_ to be taxed.
5. Jesus was wrapped in \_\_\_\_\_ clothing.
6. The \_\_\_\_\_ of the Lord shone down on the shepherds.

|            |         |            |            |            |              |              |
|------------|---------|------------|------------|------------|--------------|--------------|
| Shep-herds | Joy Inn | Myrrh Star | Bethle-hem | Swad-dling | Manger Glory | Turtle Doves |
|------------|---------|------------|------------|------------|--------------|--------------|

Help the shepherds find the path to Jesus.



OH HOLY NIGHT

|   |   |   |   |   |   |   |   |   |   |   |   |   |   |   |   |   |
|---|---|---|---|---|---|---|---|---|---|---|---|---|---|---|---|---|
| A | D | N | H | P | W | P | J | Q | B | T | G | F | F | S | Q | V |
| Y | D | M | Q | M | I | A | A | S | T | A | R | R | L | G | F | R |
| F | X | F | A | G | R | D | O | N | K | E | Y | A | S | Q | L | J |
| F | S | B | U | G | S | A | V | I | O | R | M | N | F | W | U | W |
| H | H | E | A | X | W | I | X | H | Z | I | E | K | J | A | C | B |
| E | E | T | M | B | Y | J | R | S | N | M | V | I | N | Z | X | I |
| M | P | H | I | N | Y | R | O | A | E | H | H | N | U | G | L | B |
| I | H | L | B | K | Y | P | G | S | Z | B | N | C | Z | O | Q | J |
| W | E | E | Z | M | Z | N | I | M | E | U | Q | E | X | L | M | E |
| K | R | H | I | M | Z | W | F | M | E | P | S | N | P | D | N | S |
| Z | D | E | R | A | S | K | T | A | B | A | H | S | L | D | Y | U |
| G | N | M | Q | J | J | J | S | N | Y | I | A | E | S | R | V | S |
| V | A | N | F | Q | F | A | T | G | F | T | G | I | A | Z | T | X |
| N | J | C | U | R | Z | Z | X | E | U | N | O | M | N | G | L | Z |
| B | K | Y | M | W | I | H | F | R | A | P | E | A | C | E | G | W |

|              |        |          |
|--------------|--------|----------|
| ANGEL        | GIFTS  | MYRRH    |
| ANIMALS      | GOLD   | PEACE    |
| BABY         | JESUS  | SAVIOR   |
| BETHLEHEM    | JOSEPH | SHEPHERD |
| DONKEY       | MANGER | STAR     |
| FRANKINCENSE | MARY   | WISE MEN |



# Prayer List

## Pray for healing:

Steve Roman (Brother of Sandy Wimmermark)  
Pam Roman (sister-in-law of Sandy Wimmermark)  
Crystal Dame  
Roy Pilletere (grandson-in-law of Joanne Erickson)  
Daniel Miller (son of Kathy West)  
Dylan Tyler (grandson of Betty Caruso)  
Elaine Remondi-Simpson  
Dawn Nienow (sister of Cathy Hanson)  
Vicki Breuell (friend of the Nelsons)  
Mandy Kelly (friend of the Wuesthoffs)  
Dick Wimmermark  
Linda Snarski (friend of Elaine Remondi-Simpson)

Billy Johnson (friend of the Steinnagels)  
Kevin Ames (friend of the Steinnagels)  
Livingston Carroll (brother of Patricia Carroll-French)  
Travis Turner  
Linda Lovewell (former member)  
Doris Remondi (mother of Elaine Remondi-Simpson)  
Kasey Peek  
Claudia Sanchez (sister of Rut Sanchez)  
Chip Moran  
Donna (friend of Leigh Sammons)  
Linda Wilkinson  
Marie  
Joy Elisabeth (daughter of Patricia Carroll-French)  
Sandy (friend of Patricia Carroll-French)

## Pray for those who are Grieving:

### Pray for active duty military:

Christopher Bushy (nephew of Fawn DeMello)  
Nicholas Tavernay (grandson of Althea)  
Caleb  
Henry Yanaway  
Christian Conrad  
Adrian Estrella  
Martin Wuesthoff  
Andy Sammons  
Derek Raymond  
Patrick Wimmermark

## Pray for homebound, those receiving long-term care, & their caregivers:

Nick Iario (relative of Kathleen Bartkowski)  
Kathy Dame  
Fred Launer  
Pauline Wanner  
Bob Chernansky  
Jenny Waller  
Lynn Minichino

## Pray for those with other concerns:

The Furniture Bank of SE CT  
The New London Community Meal Center



## Scroll Deadline: Third Monday of the Month

The deadline for the Scroll is the third Monday of each month.

Articles may be submitted as hard-copy or via e-mail to [communications@stlukegf.org](mailto:communications@stlukegf.org).

**DEADLINE**

## Add a Prayer

If you would like to add a prayer request to the Weekly, please complete the Prayer Request form on the reverse side of the yellow Connections form.

Leave the form in the pew and the ushers will collect them and turn them in to the church office. You can also add a prayer request by calling the office at 860-464- 7897



# *December Celebrations*

## **Birthdays:**

|                   |       |
|-------------------|-------|
| Dyann Baker       | 12/14 |
| Deborah Eld       | 12/02 |
| Charles Fear      | 12/30 |
| Olivia Johnson    | 12/17 |
| Ben Johnston      | 12/29 |
| Carolyn Kracke    | 12/29 |
| Jacqueline Kremer | 12/08 |
| Jacqueline Leone  | 12/12 |
| Elaine Lettiere   | 12/19 |
| Lisa McCabe       | 12/28 |
| Robert Nelson     | 12/04 |
| Kevin Portofee    | 12/07 |
| Brian Sturm       | 12/26 |
| Gerald Swope      | 12/20 |
| Dick Wimmermark   | 12/08 |

## **Wedding Anniversaries: (# of Years Married)**

|                        |       |      |
|------------------------|-------|------|
| Regina & Scott Donovan | 12/29 | (18) |
| Emily & Dan Miller     | 12/21 | (9)  |

## **Baptismal Birthdays:**

|                |            |
|----------------|------------|
| DeMarco, Grace | 12/14/1957 |
| Hammen, Kari   | 12/??/1940 |

DID WE MISS YOUR CELEBRATION?  
PLEASE CALL THE CHURCH OFFICE,  
860-464-7897, OR E-MAIL  
PARISHADMIN@STLUKEGF.ORG, SO WE CAN  
BE SURE TO HONOR YOUR SPECIAL DAY.

# ST. LUKE—SCHEDULE TO SERVE - December 2025

| Date  | Greeters              | Ushers                         | Altar Guild | Lay Readers | Communion Deacons               | Acolytes          | Tech Team       | Assisting Ministers |
|-------|-----------------------|--------------------------------|-------------|-------------|---------------------------------|-------------------|-----------------|---------------------|
| 12/7  |                       |                                |             |             |                                 |                   |                 |                     |
| 9:30  | Elaine Remond-Simpson | Ray Heller<br>Al Nordquist     |             | Robert N.   | Diane Hansen<br>& Camille Felty | Camille & Everett | Roni & Kristian | Katie Launer-Felty  |
| 12/14 |                       |                                |             |             |                                 |                   |                 |                     |
| 9:30  | Grace DeMarco         | Dennis Sindel<br>Dave Goodrich |             | Natalie D.  | Cyndi Arnold<br>& Robin Nelson  | Nate & Camille    | Jim & Al        | Jackie Leone        |
| 12/21 |                       |                                |             |             |                                 |                   |                 |                     |
| 9:30  | Leigh Sammons         | John Perkins<br>Ray Heller     |             | Gina D.     | Kari Hammen & Marty Wood        | Alexander & Nate  | Brad & Kristian | Mike Arnold         |
| 12/24 |                       |                                |             |             |                                 |                   |                 |                     |
| 4:00  | Cyndi Arnold          |                                |             |             | Pat Robbins & Jerry Swope       | Camille           |                 |                     |
| 8:00  | Edna Johnson          | Ray Heller                     |             | Liese Z.,   |                                 | Nate & Everett    |                 |                     |
| 12/28 |                       |                                |             |             |                                 |                   |                 |                     |
| 9:30  | Joanne Erickson       | Dave Goodrich<br>John Robbins  |             | Robert N.   | Charlie Anderson & Diane Hansen | Camille & Everett |                 | Felix Vajdos        |

This schedule compiled as of 11/25/2025; Please check the bulletin board by Fellowship Hall for updates.



# Church Calendar of Events

## DECEMBER 2025

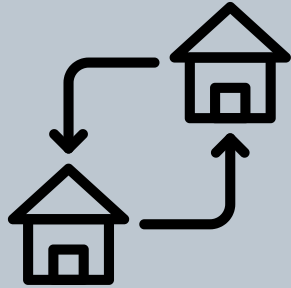
\*Community Group

Music Rehearsals:

Monday 5:00pm - Grace Notes  
Tuesday 6:00pm - The Belles  
Wednesday 9:00am - EmBellish  
Wednesday 7:00pm - JuBELLation

| SUN   | MON  | TUE   | WED  | THU  | FRI                          | SAT  |
|---|--|---|--|--|------------------------------|--|
| 30  | 1<br>9:00am Grins & Giggles<br>5:00pm Grace Notes<br>7:00pm AA*  | 2<br>9:00am Grins & Giggles<br>9:30am OA*<br>6:00pm The Belles<br>7:00pm Senior Choir                                       | 3<br>9:00am EmBellish<br>9:00am Grins & Giggles<br>11:00am Picnic in the Narthex<br>12:15pm KIDSTEPS Sarah Inc.*                     | 4<br>9:00am Grins & Giggles<br>12:30pm Blood Drive   | 5<br>9:00am Grins & Giggles  | 6<br>10:00am OA*<br>7:00pm AA*                           |
| 7<br>CELEBRATE<br>9:30am In-person & Livestream worship<br>2:30pm New London Meal Center        | 8<br>9:00am Grins & Giggles<br>5:00pm Grace Notes<br>6:30pm Fellowship Team Meeting<br>7:00pm AA*          | 9<br>9:00am Grins & Giggles<br>9:30am OA*<br>6:00pm The Belles<br>7:00pm Senior Choir                                       | 10<br>9:00am EmBellish<br>9:00am Grins & Giggles<br>11:00am Picnic in the Narthex<br>12:15pm KIDSTEPS Sarah Inc.*                    | 11<br>9:00am Grins & Giggles   | 12<br>9:00am Grins & Giggles | 13<br>10:00am OA*<br>10:30am Women's Group<br>7:00pm AA* |
| 14<br>Fellowship Event<br>Kids' Corner<br>9:30am In-person & Livestream worship                 | 15<br>SCROLL DEADLINE<br>9:00am Grins & Giggles<br>5:00pm Girls Scouts<br>5:00pm Grace Notes<br>7:00pm AA* | 16<br>9:00am Grins & Giggles<br>9:30am OA*<br>6:00pm The Belles<br>6:30pm Girl Scout Leader Meeting*<br>7:00pm Senior Choir | 17<br>9:00am EmBellish<br>9:00am Grins & Giggles<br>11:00am Picnic in the Park<br>12:15pm KIDSTEPS Sarah Inc.*<br>7:00pm JuBellation | 18<br>9:00am Grins & Giggles<br>6:00pm CONGREGATION COUNCIL  | 19<br>9:00am Grins & Giggles | 20<br>10:00am OA*<br>7:00pm AA*                          |
| 21<br>Christmas Pageant<br>9:30am In-person Worship<br>9:30am Livestream worship                | 22<br>9:00am Grins & Giggles<br>5:00pm Grace Notes<br>7:00pm AA*   | 23<br>9:00am Grins & Giggles<br>9:30am OA*<br>6:00pm The Belles<br>6:30pm Girl Scout Leader Meeting*<br>7:00pm Senior Choir | 24<br>11:00am Picnic in the Park<br>4:00pm Christmas Eve Family Service<br>8:00pm Christmas Eve Late Service                         | 25<br>Merry Christmas!<br> | 26                           | 27<br>10:00am OA*<br>10:30am Women's Group<br>7:00pm AA* |
| 28<br>Kids' Corner<br>Lessons & Carols<br>9:30am In-person Worship<br>9:30am Livestream worship | 29<br>9:00am Grins & Giggles<br>7:00pm AA*   | 30<br>9:00am Grins & Giggles<br>9:30am OA*<br>6:00pm The Belles<br>7:00pm Senior Choir                                      | 31<br>9:00am EmBellish<br>9:00am Grins & Giggles<br>11:00am Picnic in the Narthex<br>12:15pm KIDSTEPS Sarah Inc.*                    | 1  | 2                            | 3  |

*Please inform the Church  
Office of any address,  
telephone number, or email  
changes. Email changes to  
parishadmin@stlukegf.org or  
call 860-464-7897.*

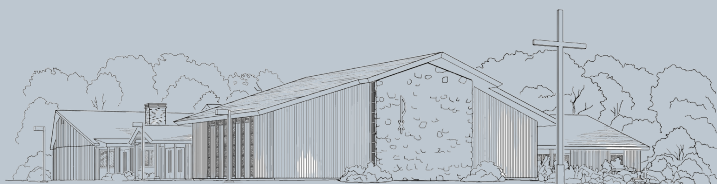


**St. Luke Lutheran Church**

1830 Route 12  
Gales Ferry, CT 06335  
Phone: 860-464-7897  
Fax: 860-464-7742  
Website: stlukegf.org

*A member of the Evangelical Lutheran  
Church in America*

*A Spirit Driven Christian  
Community of Engaged  
Disciples, Called to Serve,  
Love and Forgive.*



**St. Luke Lutheran Church**

1830 Route 12  
Gales Ferry, CT 06335  
Ph. 860-464-7897  
Fax: 860-464-7742  
Emergency #: 860-617-9343  
www.stlukegf.org

**Office Hours:**

Monday – Thursday  
9 am to 2:30 pm  
Friday  
CLOSED

**LEADERSHIP TEAM**

Pastor Heidi Johnston  
pastorheidi@stlukegf.org  
Emergency #: 860-381-0884  
www.stlukegf.org  
*Lead Pastor*

Gina Marie Williams  
gina@stlukegf.org  
*Director of Music and  
Worship Technology*

Diane Hansen  
dianehestlukegf.org  
*Bookkeeper*

Rachel Goodman  
parishadmin@stlukegf.org  
*Parish Administrator*

Kathleen Bartkowski  
*Organist/Accompanist*

Katie Kenney  
communications@stlukegf.org  
*Communications Coordinator*

Melissa Spera  
*Custodian*

**OFFICERS OF THE CONGREGATION**

Fawn DeMello  
fdemello@comcast.net  
*President*

Mark Larson  
mwl Larson1@yahoo.com  
*Vice-President*

Alan Nordquist  
treasurer@stlukegf.org  
*Treasurer*