

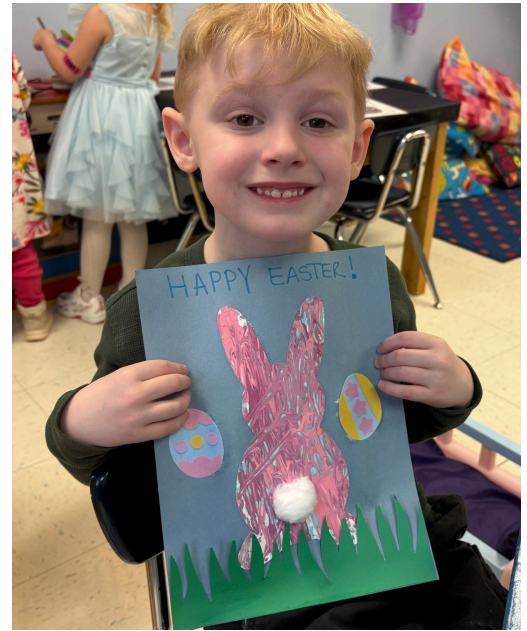


The Scroll

MAY 2026



“WE ARE A SPIRIT DRIVEN CHRISTIAN COMMUNITY OF ENGAGED DISCIPLES, CALLED TO SERVE, LOVE AND FORGIVE.” WE ARE A RECONCILING IN CHRIST CONGREGATION.



Pastor's Note

FROM PASTOR MIKE



Blessed Season of Easter , St. Luke Siblings in Christ,

A congregation and pastor demonstrate vision, compassion and mutuality when they agree on a sabbatical. It is no small task to consider the coverage options, the financial commitments and the lay leadership required during this special season in a congregation's life. At St Luke you have made such a commitment and have set a very reasonable and workable plan.

I am very happy to join you in this special season of 'spiritual adventure' as we partner together in Hearing God's Word, receiving the Sacraments and growing relationships with one another and with Jesus. I am looking forward to working with Fawn, Rachel, Gina, Diane, Kathleen, Katie and Melissa. We are well underway to ensure maximum continuity and contact among each other during Pastor Heidi's absence.

continued pg. 2

Inside:

Pastor's Note.....	1-2
Presidential Note	2
Ministry News.....	3-4
Music News.....	5
Grins & Giggles News.....	6
Council Mtg Minutes	7-9
Treasurers' Report.....	10-12
Kids Page.....	13
Prayer Requests.....	14
May Celebrations.....	15
May Schedule to Serve	16
May Calendar.....	17

Follow Us! @stlukegf

continued from pg. 1

We are in the midst of our Eastertide celebrations and will observe the “birthday of the Church” on Pentecost. There is much to celebrate in our faith and in the life of this congregation. My wife Nancy and I have been members of St Luke since 2021 and are inspired and renewed through the worship and fellowship of the St Luke community.

Thanks to the Church Council and Pastor Heidi for their confidence in me to provide pastoral leadership and Gospel partnership with this vibrant community of faith.

In Christ,
Mike Lembke
Contact Pastor
401-304-6778
michaellembke23@gmail.com

Presidential Notes

BY FAWN DEMELLO, COUNCIL PRESIDENT



Spring has sprung and it is time to welcome some changes.

I would like to WELCOME Pastor Mike Lembke who will be our pastor while Pastor Heidi is on sabbatical. Pastor Mike will start on May 4th and be with us through August 2nd .

We welcomed 7 new members in April. Many have been with us for many months and we are delighted that you all wanted to become members. These new members are:

Natalie Dannecker
Colleen Goodrich
Althea Koschmieder
Kristine Sonstrom Malowski and her children Ava Malowski and Samuel Malowski
Jean Martin

In March, we had house meetings set up for our Interfaith Organizing Group and in April there will be two meetings to move forward with the ideas from those house meetings. Many thanks to those that participated.

Our Ministry Teams have been very busy and new volunteers are always welcomed. New ideas are welcomed as well. We will be marching again at the Memorial Day Parade and would love to have you join us.

Here are our Ministry Teams:
Worship, Life Long Learning, Outreach, Fellowship, Evangelism, Facilities
Peace
Fawn



What is this strange creature? It's an axolotl - a slimy little critter that has the enviable ability to regenerate parts of its body. They're all the rage right now. But what does this have to do with a tag sale, you ask. Well, we think that it and the pictures of weird creatures that we'll be posting around the church in the next few weeks should serve to remind you that the tag sale is coming, and that we're going to need lots of stuff for the sale. And if you care to, you can try to identify the creatures. 'Cause we're not gonna tell you.

We love tag sales, and we hope you do too! So please bring us stuff to sell, come help us organize it, then come to the tag sale on June 5 (6 to 8 pm) and 6 (8 am to 2 pm) to buy stuff to fill up the space you gained by getting rid of stuff. Please start cleaning out your basements and garages and attics, and save the good stuff for the sale. You'll get rid of stuff you don't need, somebody else will love it, and the money we earn selling it will provide beds and cribs for people who otherwise could not afford them!

What we need...

Anything usually found at tag sales is welcome, but please note that it must be in good condition, and that we cannot accept items that are difficult to sell or dispose of, such as hazardous materials, paint, CRT (old style) TV sets, kitchen cabinets (yeah, we've gotten those!), large appliances (refrigerators, washing machines, etc.), tires, automobile batteries, or sets of encyclopedias. Stuff to sell can be brought to the church beginning on Sunday, May 31, after the service. If you have stuff that you've just gotta get rid of before then (like you're moving to Montana), give us a call at the furniture bank number (860 381-9224) and we'll see if we can arrange something.

Please note that we are no longer collecting used furniture for the Furniture Bank, and have very limited space for furniture at the tag sale. Furniture may be acceptable for the sale, but please do not bring it to the sale without checking with us first (can't stress this enough!). We may have to reject items that are too old, too large, in poor condition, or of limited utility.

We'll need lots of help!

It takes a whole week to set up and run the sale. It's a huge undertaking, but also a fun and rewarding way to reach out to the community. The more people who help out, the easier and more fun it becomes. Please consider joining us! We start setting up for the sale on May 31 right after church, and we'll need lots of help!

In case you didn't know:

The Furniture Bank, which began in 1982 as an outreach of St. Luke, gives new beds free of charge to people in financial need who are referred by social service agencies, hospitals, and churches. To date, we estimate that we have helped over 21,000 people. We have been running tag sales at St. Luke for 35 years (since 1990). The proceeds are used to supplement grant funds to purchase beds and cribs.

Thanks to the generosity and support of our faithful donors at the April 9th blood drive, **117 people will benefit from receiving a precious gift of life** including: red cells, plasma, platelets and power reds. Thirty-nine useable units of blood were collected including donations from our generous St. Luke members: Kristian

Balinsky, Brad Dame, Jeanne Loomis, Jim Sammons and Wally Stone. **You are very special donors** who are helping to save lives and a blessing to those in need throughout the region.

Our dedicated St. Luke volunteers staffing the drive were wonderful. The set up crew: Kristian Balinski, Sue Bibeau, Pastor Heidi, Erica Sullivan, Mike Steele and Bob Simpson prepared Fellowship Hall for the drive. Our capable registrars Sue Bibeau, Erica Sullivan and Linda Martin did a fine job of welcoming donors and helping them with computer check-in. Jerry Swope, Noelle Hale and Linda Martin managed the canteen with Elaine Remondi-Simpson. As always donors were warmly welcomed and served delicious homemade refreshments. We are always grateful to our generous refreshment providers: Sue Bibeau, Joanne Erickson, Kari Hammon, Mary Howard, Louise Larson, Jeanne Loomis, Linda Martin, Robin Nelson, Laura Parsons and Elaine Remondi-Simpson for preparing a variety of flavorful sandwiches and delectable desserts. We are pleased to continue our tradition of offering homemade refreshments to show our heartfelt appreciation to the donors and staff members. The donors are always pleased and continue to remark, "The St. Luke blood drives have the best food in town." Donors were invited to donate at upcoming St. Luke blood Drives scheduled for **Thursdays October 1 and December 3 from 1:00-6:00 PM**. Remaining refreshments were enjoyed by the congregation after the new member reception. Being good stewards of our resources, we make sure nothing you provide goes to waste. Many hands made for a quick clean-up with Linda Martin and Elaine Remondi-Simpson cleaning up the kitchen while Jackie Leone and Bob Simpson, stored all the tables and chairs.

Thank you all for making time to support this worthy cause. We never know when family members or friends might need these precious gifts of life. Your time and efforts are essential to the success of our drive and sincerely appreciated. The need for healthy blood products remains constant. By supporting the Red Cross blood drives, you are ensuring that there continues to be a healthy and viable blood supply available for our community.

Elaine Remondi- Simpson and Erica Sullivan

thank you



On March 24th , special guest, Judy Abrams, worked with the Senior Choir on vocal techniques. Judy is a highly sought clinician and is a vocal adjudicator for the State of Connecticut American Choral Directors Association. As choral director at Tyl Middle School in Montville she taught for over 20 years retiring in 2020. Currently a member of Grace Fellowship Evangelical Free Church she leads the Disciple Quartet. We are very grateful for the time that Judy spent with us and everything she taught us. We are looking to have her back in the fall once again.

Holy Week

Thank You! For the dedication of Kathleen Bartkowski, the Senior Choir, JuBELLation and the Grace Notes in making our Holy Week services extremely moving.

Senior Choir members, Katie Launier-Felty, Liese Zitzkat, Jean Martin, Kellie August, Lisa McCabe, Pam Suplicki, Ginny Sturm, Amanda Murizzi, Noel Hale, Bob Nelson, Natalie Donnecker, Brian Sturm, Greg Martin, and Kristian Balinski.

JuBELLation Handbell members, Deb Burgess, Beth & Rob Ayer, Kristen Smart, Peter Keefe, Cathie Freamon, Bonnie Denton, Lisa McCabe, Betty Caruso, Fawn Demello, Tori Kelpin, Mike Steel, Kristian Balinski and Steve Gadaree rang at the Tenebrae service (joined by Jen Nicki) and Easter Sunday.

Grace Notes members, Nate Dame, Alex Nicki, Jackson Haynes, Everett Steele, Camille Felty, and Emilee Balinski.

Link to "Were You There":





Grins & Giggles Preschool News

BY NANCY RUPERT

April just seemed to fly by! Although it was a bit too wet for our egg hunt outside, the children enjoyed finding their eggs in the Fellowship Hall instead. Chicks, bunnies and crosses and decorating our Easter Egg tree highlighted our weeks. During our "Our Beautiful Earth" week we collected trash in the neighborhood and used our imaginations to create art projects out of recyclable items. We learned how trash affects our oceans and wildlife and vowed to be good stewards of our home, Planet Earth.

When spring finally arrived, flowers, birds and nests, frogs, turtles and insects caught our attention. We planted seeds, learned about the parts of a flower, the life cycle of a frog and a butterfly and saw real polliwogs! Mother's Day will bring our attention to making some lovely cards and gifts for our mothers.

Interviews for next year are happening weekly and there are very few spots left in our three weeks of camp! Yay! Happy Spring everyone!



Minutes of the March Congregation Council Meeting

St. Luke Lutheran Church Minutes of the Congregation Council Meeting March 18, 2026

6:05 pm Call the Congregation Council Meeting to order

Attendees: Fawn DeMello, Leigh Sammons, Helmut Steinnagel, Brad Dame, Pr. Heidi Johnston, Al Nordquist, Janis Vajdos, John Perkins

Absent: Pat Robbins, Erika Sullivan, Mitch Robinson

Devotions: Pastor Heidi led devotions

Approval of Agenda

Motion: I move to approve the agenda—passed

Approval of February 19, 2026 council minutes

Motion: I move to approve the February 19, 2026 Council minutes—passed

President's Remarks

- Executive Report
 - 2nd vote is needed for the constitution January 2027
- Council Retreat
 - Contributions from attendees are due, if able
- Sabbatical Update
 - Time period in approved in XXXX was for 12 weeks and 1 week vacation
 - Motion: Leigh moves that Pr Heidi be approved for a 13-week sabbatical, in accordance with her contract, in lieu of the previously approved 12 week sabbatical plus 1 week of vacation
 - Motion passes
- Portico Enrollment for Pastor Mike Lembke has been arranged
- New Members to be installed on April 19, 2026

Church members comments/concerns

None present

Financial Reports

- Audit Team will be meeting Mar 24, 2026
 - Requesting completion by mid-May

Minutes of the March Congregation Council Meeting

- New Xerox Copier
 - Al will research new contract with Xerox for a new copier
 - Motion: Al moves the Council approve Al or Fawn to enter into a new contract with Xerox for a new copier provided that the new contract does not result in any increase in cost over our existing contract or decrease in services
 - Motion passes
- Pastor Discretionary Account
- Pr. Heidi is seeking guidance on how the fund will be replenished when it is spent down
- Comcast Contract
 - Contract is up for renewal before April 30, 2026
 - Email was received alerting us that the firewall needs to be renewed within 30 days; the email is suspected as potential spam
- Backup for Payroll process for Bookkeeper
 - Christina Imbrogno interested in being backup for payroll and will meet with Diane Hansen to learn more
 - Motion: Al moves that we contract St. Luke member, Christina Imbrogno, to be the bookkeeper payroll backup to be paid at a rate of \$20 per hour for training and any hours worked as the backup
 - Motion passes

New Business

Pastor's Report - Please note all reports will be accepted after the last report

- Scheduling a number of preparations prior to her sabbatical

Purpose Teams Reports

- Evangelism
 - Provide lunch for New Members Class on April 12, 2026
- Fellowship
 - Planning a reception for new members on April 19, 2026
- Lifelong Learning
 - Kicked off Bible Study last week with 13 attendees
 - Last Soup Study and Sacrament Thursday will include guests from House meetings
- Outreach Ministry
 - Up to 161 flocks of chicks
 - Community garden has kicked off with initial prep
- Worship
 - Holy Week plans

Support Team Reports

- Communications
- Facilities
 - Quotes being collected for painting exterior of the building

Minutes of the March Congregation Council Meeting

- John is meeting with the owner of the snow plow to discuss damages done during plowing
- Lawn mower needs to be serviced and possibly repaired
- Parish
- People
 - Interviewed two new substitutes for Grins and Giggles Summer Camp

Motion to Accept All Reports

- Motion passes

Old Business

Next meeting will be April 16, 2026 at 6:00 pm

Devotions: Leigh

ACTION: Pr Heidi will send an updated sabbatical proposal to the synod with new dates

ACTION: Fawn will confirm if the bylaws require council to approve new members

ACTION: Brad to connect with Rachel about Comcast firewall information, follow-up with Comcast about the contract and ask to remove mobility lines from the contract if it will save us money

Motion to Adjourn and Closing Prayer – Lord's Prayer

- Motion passes

Respectfully submitted,

Janis Vajdos

Liaison to Fellowship, serving as substitute Recording Secretary

Treasurer's Report for March 2026

St. Luke Lutheran Church
Treasurer's Report for Month Ending
March 31, 2026

April 10, 2026

Income Summary

Pledged offerings for the month of March were approximately \$12.9K above the monthly budget, resulting in pledged offerings for the year being approximately \$4.5K above the YTD budget. Grace Giving for the month of March was slightly below the monthly budget by approximately \$300. With all offering sources combined, our YTD total offerings are approximately \$8.8K above the YTD budget.

Grins & Giggles income for the month of March was above the monthly budget by \$558, resulting in YTD Grins & Giggles income as of the end of March being \$1.4K greater than the YTD budget.

We also earned \$350 in investment income in the month of March, primarily from our two Thrivent CD's.

With all budgeted income sources combined, our actual total budgeted income for the month of March was \$15.6K greater than the monthly budget, making the YTD total budgeted income \$14.1K greater than the YTD budget.

A summary of the YTD March 2026 budgeted income is provided in the table below:

Account Name	Period Activity	Monthly Budget	YTD Balance	Budget YTD	Annual Budget	Annual Budget Remaining
Pledges	42,852.00	30,000.00	109,508.44	105,000.00	371,268.00	261759.56
Grace Giving	2,703.50	3,000.00	14,351.62	10,000.00	37,700.00	23348.38
Loose Cash Offering	428.00	333.00	953.00	999.00	4,000.00	3047
Special Envelopes	0.00	500.00	534.00	500.00	1,700.00	1166
Offerings	\$45,983.50	\$33,833.00	\$125,347.06	\$116,499.00	\$414,668.00	\$289,320.94
Building Use	185.63	283.00	886.89	849.00	3,400.00	2513.11
Special Collections	3,085.35		3,865.75			
Structures Income	\$3,270.98	\$283.00	\$4,752.64	\$849.00	\$3,400.00	\$2,513.11
Investments Div/Interest	349.84	400.00	1,129.97	1,200.00	4,920.00	3790.03
Other Income	\$349.84	\$400.00	\$1,129.97	\$1,200.00	\$4,920.00	\$3,790.03
Grins & Giggles Income - Donations	0.00		15.00			
Grins & Giggles Income-Tuition	9,250.00	8,600.00	27,330.00	25,800.00	94,579.00	67249
Grins & Giggles Income-Registration fees	0.00	92.00	150.00	276.00	1,100.00	950
Total Grins and Giggles Income	\$9,250.00	\$8,692.00	\$27,495.00	\$26,076.00	\$95,679.00	\$68,199.00
Total Budgeted Income	\$58,854.32	\$43,208.00	\$158,724.67	\$144,624.00	\$518,667.00	\$363,823.08

In addition to budgeted income, there was also \$4897 of unbudgeted income in the month of March. This included \$2000 in donations to the Sabbatical fund, \$750 in donations to the Good Samaritan fund, \$558 in income from the Scrip Program, a refund of \$475 from Camp Calumet for unused deposits paid in previous years, and multiple smaller donations.

Treasurer's Report for March 2026

Expense Summary

Total Budgeted YTD Expenses of \$132,105.33 is less than the YTD budget of \$133,622.00 by \$1516.67 as of the end of March. March budgeted expenses were greater than the monthly budget by \$3646.05.

Grins & Giggles YTD Expenses of \$23,792.72 is less than the budget of \$26,268.00 by \$2475.28.

Net Results: As of the end of March 2026 we have an Actual YTD Total Income of \$211,797.33, and Total Expenses of \$137,938.29, resulting in a difference of \$73,859.04. A high-level year to date summary is in the tables below.

Account Name	Period Activity	Monthly Budget	YTD Balance	Budget YTD	Annual Budget	Annual Budget Remaining
Total Budgeted Income	\$58,854.32	\$43,208.00	\$158,724.67	\$144,624.00	\$518,667.00	\$363,823.08
TOTAL Budgeted Expense	\$43,653.05	\$40,007.00	\$132,105.33	\$133,622.00	\$534,359.00	\$402,268.67
Budgeted Income/Expense Difference	\$15,201.27	\$3,201.00	\$26,619.34	\$11,002.00	(\$15,692.00)	(\$38,445.59)
Total Grins and Giggles Income	\$9,250.00	\$8,692.00	\$27,495.00	\$26,076.00	\$95,679.00	\$68,199.00
Total Grins & Giggles Expense	\$8,420.52	\$8,832.00	\$23,792.72	\$26,268.00	\$96,627.00	\$72,849.28
Grins & Giggles Income/Expense Difference	\$829.48	(\$140.00)	\$3,702.28	(\$192.00)	(\$948.00)	(\$4,650.28)
Total Income	\$63,750.97	\$43,208.00	\$211,797.33	\$144,624.00	\$534,361.00	\$379,517.08
Total Expense	\$47,039.81	\$40,007.00	\$137,938.29	\$133,622.00	\$534,359.00	\$402,268.67
Total Income/Expense Difference	\$16,711.16	\$3,201.00	\$73,859.04	\$11,002.00	\$2.00	(\$22,751.59)

Other Treasurer Activity:

- Reviewed bi-weekly payroll
- Reviewed March bank reconciliation
- Signed multiple checks in absence of cash disbursements clerk
- Held kickoff meeting with audit team on 3/24/26 via zoom. All three members of the audit team attended. I requested that they complete the audit by 5/15/26.
- Christina Imbrogno agreed to serve as backup to the Bookkeeper for payroll. She trained with Diane on 4/6/26 for 2 hours, and is planning to process the payroll with Diane again on 4/20/26.
- As authorized by the council at our March meeting, I signed a new contract for a new Xerox copier/printer, which will go into effect in April. This new contract will save approximately \$30 per month as compared to our current contract. Xerox is scheduled to come and deliver and set up the new copier/printer on 4/21/26. This date has been coordinated with Rachel.

Respectfully Submitted,
 Alan Nordquist
 Treasurer

Consolidated Fund Activity Report March 2026

St Luke Lutheran Church - Gales Ferry CT Consolidated Fund Activity Report as of 03/31/2026

Account #	Account Name	Beg Balance	Receipts	Disbursements	Transfers/JE's	End Balance
3.1001.1001	General Operating Fund Balance	43,546.31	158,709.67	132,466.39	-	69,789.59
3.1050.1000	<i>Building Fund Balance</i>					
3.1050.1001	General Building Fund Balance	22,382.55	30.00	-	-	22,412.55
3.1050.1002	Sanctuary Renovations Balance	4,582.36	30.00	-	-	4,612.36
3.1060.1000	Memorial Fund Balance	7,098.27	-	700.00	-	6,398.27
3.1070.1000	Long Term Contingency Fund Balance	14,072.68	30.00	-	-	14,102.68
3.1080.1000	Unrestricted Gifts Fund Balance	93,727.25	36,330.62	554.97	-	129,502.90
3.2001.1000	<i>Worship-Dedicated Balance</i>					
3.2001.1001	Special Music Balance	2,544.61	-	-	-	2,544.61
3.2001.1003	Handbell Program Fund Balance	787.91	-	52.10	-	735.81
3.2001.2020	Embellish (Bells of Fire) Fund Balance	2,121.43	153.00	273.10	-	2,001.33
3.2002.1000	<i>Administrative-Dedicated Balance</i>					
3.2002.1004	Special Gifts Balance	180.04	1,000.00	1,000.00	-	180.04
3.2002.1006	Staff Development Balance	3,794.80	-	-	-	3,794.80
3.2002.1012	Sabbatical Fund Balance	9,750.00	8,145.00	-	-	17,895.00
3.2002.1100	Internship Program Balance	0.00	1,500.00	-	-	1,500.00
3.2002.1007	Flowers Balance	(141.34)	432.04	21.25	-	269.45
3.2004.1000	<i>Fellowship-Dedicated Balance</i>					
3.2004.1005	Fellowship Special Events Balance	2,111.96	-	-	-	2,111.96
3.2004.1010	Fellowship Furnishings Balance	6,021.56	-	-	-	6,021.56
3.2005.1000	<i>Special Programs Balance</i>					
3.2005.1002	Great Lakes Scrip Program Balance	2,382.25	763.00	-	-	3,145.25
3.2006.1000	<i>Youth-Dedicated Balance</i>					
3.2006.1003	ELCA Youth Gathering Balance	5,960.48	2,100.00	-	-	8,060.48
3.2006.1004	Youth Mission Trip Balance	522.15	-	-	-	522.15
3.2007.1000	<i>Family Ministry-Dedicated Balance</i>					
3.2007.1001	Family Ministry Activities Balance	208.00	-	-	-	208.00
3.2008.1000	<i>Life Long Learning-Dedicated Balance</i>					
3.2008.1001	Ecumenical VBS Balance	252.58	-	-	-	252.58
3.2008.1003	Women's Retreat Balance	236.12	-	-	-	236.12
3.2008.1010	Grins & Giggles Donations Balance	188.48	15.00	15.00	-	188.48
3.2009.1000	<i>Ministry-Dedicated Balance</i>					
3.2009.1005	Thrivent Choice Balance	0.00	534.00	-	-	534.00
3.2009.1001	Meal Center Balance	723.25	-	-	-	723.25
3.2009.1002	Chikumbuso Balance	0.00	200.00	200.00	-	-
3.2010.1000	<i>Discretionary Gifts Balance</i>					
3.2010.1001	Pastors' Discretionary Balance	11,218.85	-	2,635.48	-	8,583.37
3.2010.1002	Good Samaritan Fund Balance	4,251.92	1,350.00	-	-	5,601.92
3.2010.1003	Council Discretionary Fund Balance	3,107.20	-	20.00	-	3,087.20
3.2010.1004	Camp Calumet Scholarships Balance	700.00	475.00	-	-	1,175.00
3.2011.1000	<i>Facilities Support-Dedicated Balance</i>					
3.2011.1001	Memorial Garden Balance	4,005.85	-	-	-	4,005.85
3.9000.1000	Net Fixed Asset Fund Balance	1,918,224.00	-	-	-	1,918,224.00
Total		<u>\$2,164,561.52</u>	<u>\$211,797.33</u>	<u>\$137,938.29</u>	<u>\$0.00</u>	<u>\$2,238,420.56</u>



SPRING

WORD SEARCH

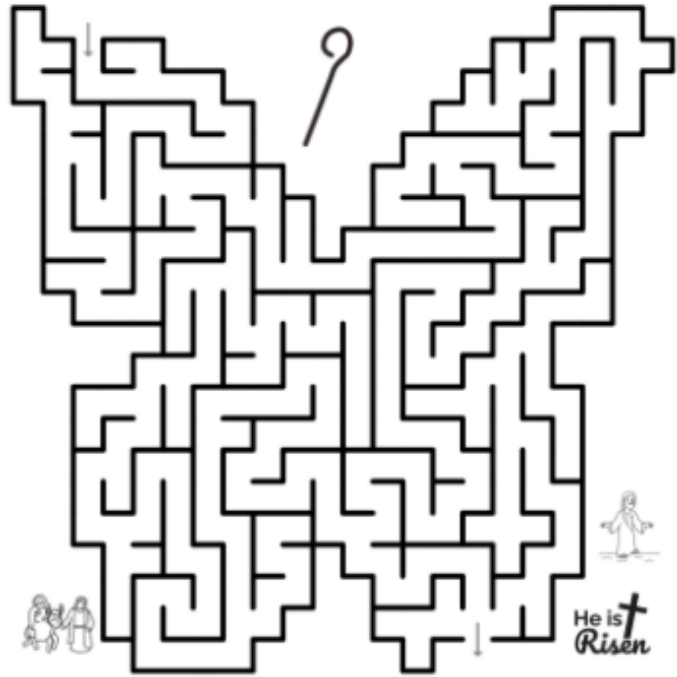
T	E	G	G	S	X	T	T	B	V
Q	V	G	E	P	P	C	S	L	B
W	T	B	L	C	O	O	M	O	C
N	I	U	A	H	G	R	A	S	S
M	M	G	E	I	O	A	Z	S	C
R	U	S	B	C	J	I	L	O	P
K	D	D	E	K	B	N	R	M	N
C	W	O	R	M	S	P	C	O	E
T	A	U	F	L	O	W	E	R	S
V	C	S	F	E	Z	G	Y	B	T

- BLOSSOM
- BUGS
- FLOWERS
- RAIN
- MUD
- EGGS
- NEST
- CHICK
- WORMS
- GRASS



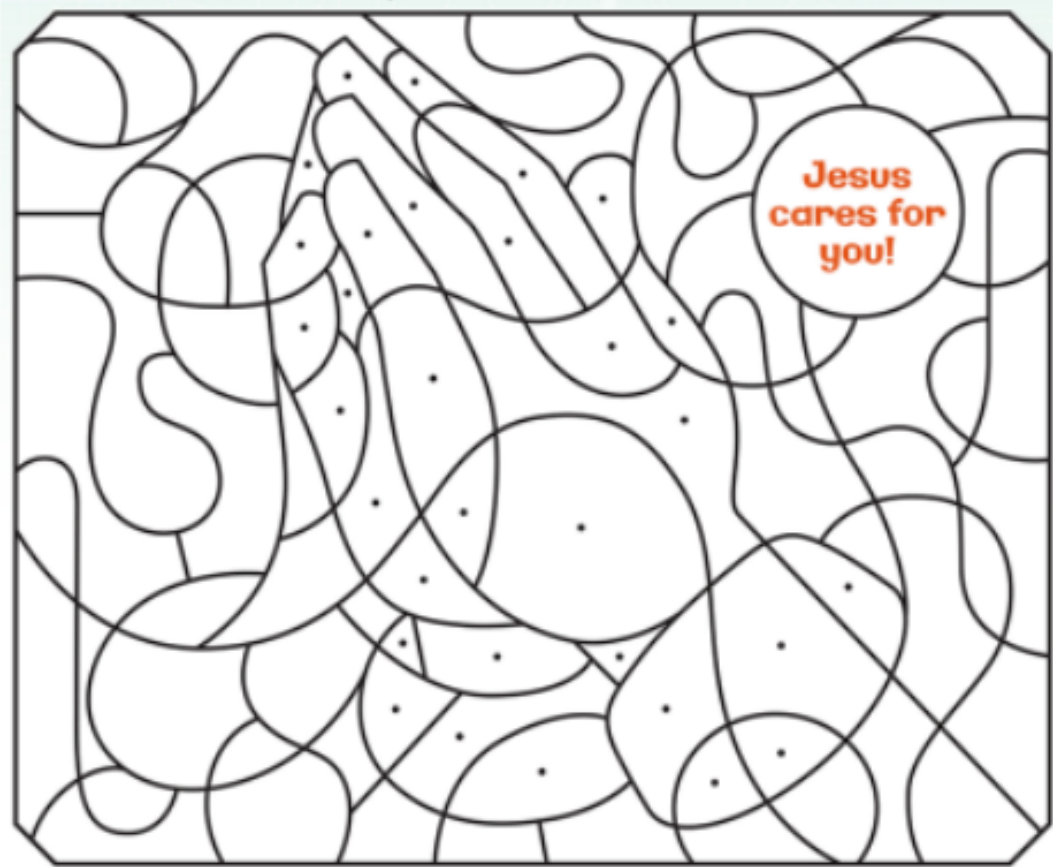
Butterfly Maze

Can you find your way through the maze?



He is Risen

Color the shapes that have dots in them.



Prayer List

Pray for healing:

Cyndi Arnold
Lori Smith (sister-in-law of Laura Parsons)
Lisa Burgess (family of Elaine Remondi-Simpson)
Carol Hurlbutt (sister of Mitch Robinson)
Richard Stanton (friend of the Tobiassens)
Stacey Stone (daughter-in-law of the Tobiassens)
Baby Eliana Marshall (friend of Lauren Brundage)
Chris Hansen (friend of the Lettieres)
Kathy West
Madysen Lent (friend of Elaine Lettiere)
Steve Roman (Brother of Sandy Wimmermark)
Pam Roman (sister-in-law of Sandy Wimmermark)
Daniel Miller (son of Kathy West)

Elaine Remondi-Simpson
Dawn Nienow (sister of Cathy Hanson)
Vicki Breuell (friend of the Nelsons)
Mandy Kelly (friend of the Wuesthoffs)
Dick Wimmermark
Kevin Ames (friend of the Steinnagels)
Livingston Carroll (brother of Patricia Carroll-French)
Travis Turner
Linda Lovewell (former member)
Doris Remondi (mother of Elaine Remondi-Simpson)
Kasey Peek
Claudia Sanchez (sister of Rut Sanchez)
Chip Moran
Donna (friend of Leigh Sammons)
Joy Elisabeth (daughter of Patricia Carroll-French)
Sandy (friend of Patricia Carroll-French)

Pray for those who are Grieving:

Pray for active duty military:

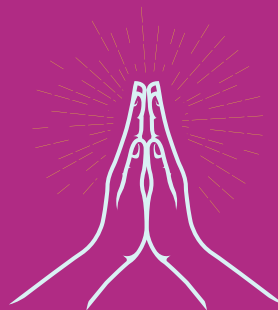
Christopher Bushy (nephew of Fawn DeMello)
Nicholas Tavernay (grandson of Althea Caleb)
Henry Yanaway
Christian Conrad
Adrian Estrella
Martin Wuesthoff
Andy Sammons
Derek Raymond
Patrick Wimmermark

Pray for homebound, those receiving long-term care, & their caregivers:

Tony Lettiere (father of Dan Lettiere)
Sabina Moran (mother of Gina Donovan)
Ann Stanton (friend of the Tobiassens)
Nick Iario (relative of Kathleen Bartkowski)
Kathy Dame
Fred Launer
Pauline Wanner
Bob Chernansky
Jenny Waller
Lynn Minichino

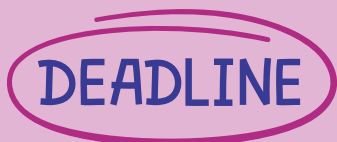
Pray for those with other concerns:

Sumud: for Justice in Palestine and Israel
ELCA Creation Care Network



Scroll Deadline: Third Monday of the Month

The deadline for the Scroll is the third Monday of each month.
Articles may be submitted as hard-copy or via e-mail to communications@stlukegf.org.



Add a Prayer

If you would like to add a prayer request to the Weekly, please complete the Prayer Request form on the reverse side of the yellow Connections form. Leave the form in the pew and the ushers will collect them and turn them in to the church office. You can also add a prayer request by calling the office at 860-464- 7897

May Celebrations

Birthdays:

Charles Anderson Jr. 5/26
Kris Balinski 5/03
Bob Chernansky 5/10
Trevin Correia 5/07
Suzanne Etris 5/02
Jennifer Gilletti 5/31
Penelope Howell-Heller 5/05
John Kremer 5/15
Katie Launer-Felty 5/03
Tom Nolan 5/11
Hal Oberg 5/10
Jill Ragland 5/24
Nancy Rupert 5/26
Sharon Schlepp 5/27
Jeanne Steinnagel 5/23
Ben Vajdos 5/16
Kathy West 5/07

Wedding Anniversaries: (# of Years Married)

Larry & Laura Parsons 5/05 (36)
Alan & Sue Portofee 5/26 (36)
Mitchell & Mary Robinson 5/25 (43)
Leigh & Jim Sammons 5/26 (30)
Helmut & Jeanne Steinnagel 5/19 (53)
Marty & Pat Wood 5/07 (59)
David & Liese Zitzkat 5/09 (28)

Baptismal Birthdays:

Bob Chernansky 5/24/1936
Suzanne Etris 5/??/1952
Mike Lembke 5/10/1956
Linda Martin 5/18/1947
Robert Nelson 5/25/1958
Michael Steele 5/15/1983
Mikayla Zitzkat 5/14/2006

DID WE MISS YOUR CELEBRATION?
PLEASE CALL THE CHURCH OFFICE,
860-464-7897, OR E-MAIL
PARISHADMIN@STLUKEGF.ORG, SO WE CAN
BE SURE TO HONOR YOUR SPECIAL DAY.

ST. LUKE--SCHEDULE TO SERVE - May 2026

Date	Greeters	Ushers	Altar Guild	Lay Readers	Communion Deacons	Acolytes	Tech Team	Assisting Ministers
5/3								
9:30	Joanne Erickson	Ray and John Perkins	Cathy Hanson		Charlie Anderson & Diane Hansen	Alexander	Roni & Kristian	Lisa McCabe
5/10								
9:30	Edna Johnson	Al and Dennis	Sue Anderson	Fawn D.	Cyndi Arnold & Camille Felty	Nate	Brad & Dave	Jacqueline
5/17								
9:30	Leigh Sammons	Mark and Louise	Linda Martin	Liese Z.	Leigh Sammons & Kari Hammen	Alexander	Jim & Al	Fawn DeMello
5/24								
9:30	Sue Bibeau	David Zitzkat and Dave Goodrich	Penny Heller	Natalie D.	Jerry Swope & Charlie Anderson	Camille	Roni & Dan	Erica
5/31								
9:30	Joan Lambert	John Robbins. Al Nordquist.	Deb Eld		Diane Hansen & Robin Nelson	Nate	Kristian & Brad	Lisa McCabe

This schedule compiled as of 4/28/26; Please check the bulletin board by Fellowship Hall for updates.

Church Calendar of Events

MAY 2026

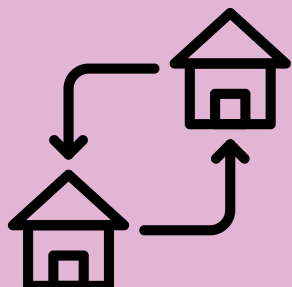
*Community Group

Music Rehearsals:

Monday 5:00pm - Grace Notes
 Tuesday 6:00pm - The Belles
 Wednesday 9:00am - EmBellish
 Wednesday 7:00pm - JuBELLation

SUN	MON	TUE	WED	THU	FRI	SAT
26	27	28	29	30	1 9:00am Grins & Giggles	2 10:00am OA* 7:00pm AA*
3 CELEBRATE 9:30am In-person & Livestream worship 11:00am Coffee Hour 2:30pm New London Meal Center	4 9:00am Grins & Giggles 5:00pm Grace Notes 7:00pm AA* 7:00pm Thames River Big Band	5 9:00am Grins & Giggles 9:30am OA* 6:00pm The Belles 7:00pm Senior Choir	6 9:00am EmBellish 9:00am Grins & Giggles 11:00am Picnic in the Narthex 12:15pm KIDSTEPS Sarah Inc.*	7 9:00am Grins & Giggles	8 9:00am Grins & Giggles	9 10:00am OA* 7:00pm AA*
10 Kids' Corner 9:30am In-person & Livestream worship 11:00am Lifelong Learning Meeting	11 9:00am Grins & Giggles 5:00pm Grace Notes 7:00pm AA* 7:00pm Thames River Big Band	12 9:00am Grins & Giggles 9:30am OA* 6:00pm Executive Planning Team 6:00pm The Belles 7:00pm Senior Choir	13 9:00am EmBellish 9:00am Grins & Giggles 11:00am Picnic in the Narthex 12:15pm KIDSTEPS Sarah Inc.* 7:00pm JuBellation	14 9:00am Grins & Giggles	15 LHS Small Ensemble Concert 9:00am Grins & Giggles	16 10:00am OA* 7:00pm AA*
17 2:30am In-person & Livestream worship 11:00am Bible Study 5:00pm Girl Scout Troop Meeting*	18 SCROLL DEADLINE 9:00am Grins & Giggles 5:00pm Girls Scouts 5:00pm Grace Notes 7:00pm AA* 7:00pm Thames River Big Band	19 9:00am Grins & Giggles 9:30am OA* 6:00pm The Belles 7:00pm Senior Choir	20 9:00am EmBellish 9:00am Grins & Giggles 11:00am Picnic in the Narthex 12:15pm KIDSTEPS Sarah Inc.* 7:00pm JuBellation	21 9:00am Grins & Giggles 6:00pm CONGREGATION COUNCIL	22 LHS Small Ensemble Concert 9:00am Grins & Giggles	23 10:00am OA* 11:00am Fellowship Hall Rental- Baker 7:00pm AA*
24 Kids' Corner Memorial Day Parade 9:30am In-person & Livestream worship	25 9:00am Grins & Giggles 5:00pm Grace Notes 7:00pm AA*	26 9:00am Grins & Giggles 9:30am OA* 6:00pm The Belles 7:00pm Senior Choir	27 9:00am EmBellish 9:00am Grins & Giggles 11:00am Picnic in the Narthex 12:15pm KIDSTEPS Sarah Inc.* 7:00pm JuBellation	28 NE Synod Assembly 9:00am Grins & Giggles	29 NE Synod Assembly 9:00am Grins & Giggles	30 NE Synod Assembly 10:00am OA* 7:00pm AA* 31 Tag Sale Set-up 9:30am In-person & Livestream worship

*Please inform the Church
Office of any address,
telephone number, or email
changes. Email changes to
parishadmin@stlukegf.org or
call 860-464-7897.*



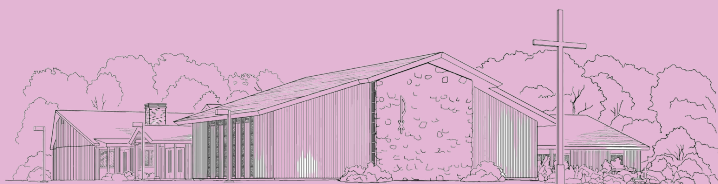
St. Luke Lutheran Church

1830 Route 12
Gales Ferry, CT 06335
Phone: 860-464-7897
Fax: 860-464-7742
Website: stlukegf.org



*A member of the Evangelical Lutheran
Church in America*

*A Spirit Driven Christian
Community of Engaged
Disciples, Called to Serve,
Love and Forgive.*



St. Luke Lutheran Church

1830 Route 12
Gales Ferry, CT 06335
Ph. 860-464-7897
Fax: 860-464-7742
Emergency #: 860-617-9343
www.stlukegf.org

Office Hours:

Monday – Thursday
9 am to 2:30 pm
Friday
CLOSED

LEADERSHIP TEAM

Pastor Heidi Johnston
pastorheidi@stlukegf.org
Emergency #: 860-381-0884
www.stlukegf.org
Lead Pastor

Gina Marie Williams
gina@stlukegf.org
*Director of Music and
Worship Technology*

Diane Hansen
dianeh@stlukegf.org
Bookkeeper

Rachel Goodman
parishadmin@stlukegf.org
Parish Administrator

Kathleen Bartkowski
Organist/Accompanist

Katie Kenney
communications@stlukegf.org
Communications Coordinator

Melissa Spera
Custodian

OFFICERS OF THE CONGREGATION

Fawn DeMello
fdemello@comcast.net
President

Helmut Steinnagel
vicepresident@stlukegf.org
Vice-President

Alan Nordquist
treasurer@stlukegf.org
Treasurer