



The Scroll

JANUARY 2026



"WE ARE A SPIRIT DRIVEN
CHRISTIAN COMMUNITY
OF ENGAGED DISCIPLES, CALLED TO
SERVE, LOVE AND FORGIVE."
WE ARE A RECONCILING IN
CHRIST CONGREGATION.



Pastor's Note

FROM PASTOR HEIDI



"Then the father said to him, 'You are always with me, and all that is mine is yours.'" (Luke 15:31)

Blessed New Year!!

Above, I have shared the verse from our financial stewardship drive in late 2025. We are always with God, because God has chosen to be with us in Spirit, in Christ, in Word and Sacrament, and in service alongside one another in the body of Christ. Having a vibrant worshiping community to be a part of, like the one we are delighted to share at St. Luke, is a generous gift from God! In the New Year, I invite you to please be generous in your support of St. Luke, that we might continue to be a joyous, compassionate, welcoming, outreaching outpost for ministry in the name of Jesus Christ.

Inside:

Pastor's Note.....	1-2
Presidential Note	3
Ministry News.....	3-4
Music News.....	5
Grins & Giggles News.....	6
Council Mtg Minutes	7-9
Treasurers' Report.....	10-12
Kids Page.....	13
Prayer Requests.....	14
Jan. Celebrations.....	15
Jan. Schedule to Serve	16
Jan. Calendar.....	17

Follow Us! @stlukegf

continued pg. 2

continued from pg. 1

Every year, trusting in the presence of God with us, the Congregation Council works diligently to craft a budget that supports ministry in the name of Jesus, including worship, just and equitable compensation for staff, funds for supplies, special events, local benevolence, and well maintained property and grounds. The Council faithfully trims the budget to align with pledges and other income. Again this year, we will likely need to add a lump sum from our “rainy day fund” in order to present a “balanced budget” at the annual meeting for projected expenses in 2026. This is not a sustainable financial plan. Increased giving and income would ensure support to sustain and grow ministry through St. Luke Lutheran Church.

We work with the Holy Spirit to trust God’s abundance, to have faith that we will have the resources needed to continue vital ministry, AND we aim to be good stewards of all with which we are entrusted. Please, this January, come to the budget review sessions on Saturday, 1/17/26 (Zoom) and after worship on Sunday, 1/18/26. These are opportunities to see what our financial realities are and to make informed decisions about your involvement at St. Luke and your financial stewardship.

Please also consider making a 2026 pledge if you haven’t already. Please give a regular financial contribution, or a little more than planned, as you are able, so that St. Luke may continue to be a place where your spiritual needs are met, where we work together to support our neighbors in the community, and where we come together as the body of Christ.

We are always with our God, and God’s abundance is all around us.
May we go forward into this new year confident that God will provide.

In Christ,

Pastor Heidi Johnston



Presidential Notes

BY FAWN DEMELLO, COUNCIL PRESIDENT



We have made a number of updates over the year 2025. We reviewed the By-laws for the many ministry teams we have here at St. Luke. The Congregation Council made and approved changes to many of our Continuing Resolutions for our ministry teams and staff job descriptions. Some items had not been updated in over 2 years and we wanted to make sure that showed what our ministry teams are doing as well as positions of our staff.

We also changed our Welcome Statement for Reconciling Works to stay in compliance with them as Reconciling in Christ Church. You can see these changes on our website as well as in our bulletin. The Executive Committee has just completed updates with the Constitution that will be voted on at our Annual Meeting on January 25, 2026. We needed to make changes so that we stay in compliance with the New England Synod. We will be asking the New England Synod to approve the Constitution for it has not been approved for a number of years.

We continue to show being in good faith in all aspects of the life of St. Luke Lutheran Church. Many hands made these changes possible, and I THANK each and everyone of you that assisted. Looking forward to how this next year goes with our theme of "Spiritual Gifts" through the Congregation Council.

Peace

Fawn



Our garden was planted last spring with another year of seedlings grown by the Ledyard High School Vo-Ag program. Favorable weather and several new volunteers got us off to a good start. Mark Godette made extensive improvements to strengthen the equipment shed and add slate pieces to the new gravel steps to make them more secure. All was going well until crop damage appeared from a very unusual climbing woodchuck who had an appetite for butternut squash! A critter cam, major actions and expenses were necessary to extend the height of the fencing to block the critter's entry. With those investments the harvest began July 2nd and continued until October 25th, with all produce going to the Gemma Moran United Way Food Center in New London and the Shoreline Pantry in East Lyme. The total harvest produced this year was 1,406 pounds, the garden's second highest production. Another 95 pounds was donated by church members from their home gardens.

Our composting project will be producing good organic soil next spring. Fresh food scraps can be brought up the hill to the wooden bins all winter but the black plastic compost bin by the church back entrance will be removed before Christmas until the spring.

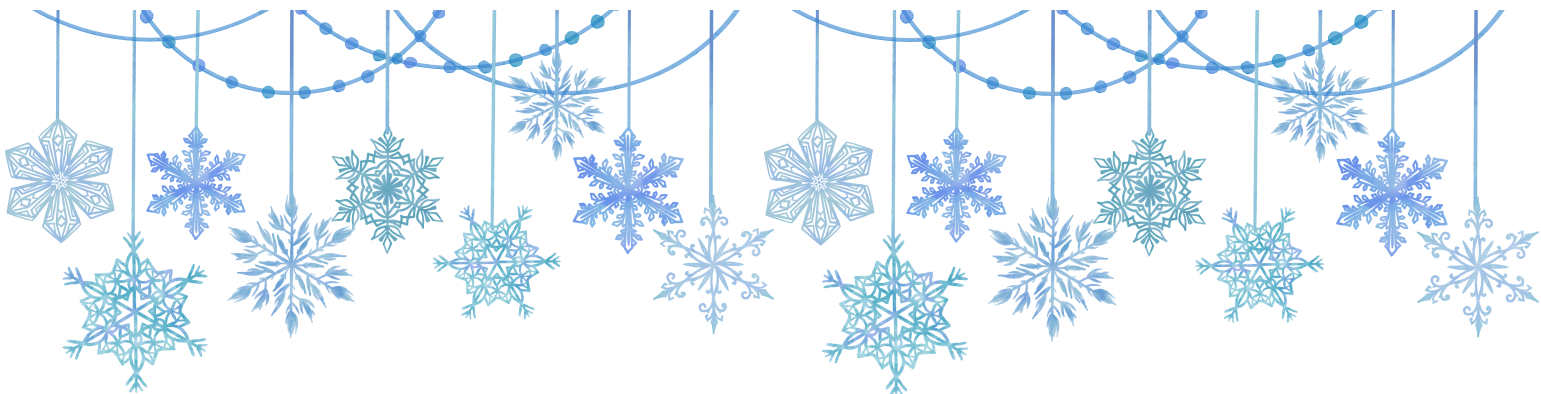
Many thanks go to all the volunteers: Linda Martin, Mark Godette, Jeanne Loomis, Jacqueline Leone, Megan Victoria, Jim Sammons, Fawn DeMello, Andy Eld, Kristian Balinski, Drew Chappelle, Helmut Steinnagel, Lisa McCabe, Wesely and Ben Johnston.

Ledyard Social Services Collection

BY DIANE HANSEN

Thank you for contributions to LSS for Thanksgiving and Christmas food baskets. We collected \$990 in checks and cash. The donations were gratefully received.

We made a difference in our local area. Let's feel good about that!



The 2025 Community Christmas is in the books! I would like to thank everyone who came. I keep hearing that this concert was "the best one ever". Wow!

A special thank you to Janis and Felix Vajdos for making the reception happen.

If you missed the concert, please use the QR Code below to watch!



Watch the
concert here!





Grins & Giggles Preschool News

BY NANCY RUPERT

Merry Christmas and Happy New Year from St. Luke Grins & Giggles Preschool! We have had a wonderful time preparing for the Christmas holiday. Lots of ornaments and holiday themed projects as the excitement for the season approached. We had a visit from 'Santa' and participated in the church pageant too!

January we begin our year with 'Books, Brushes and Bongos' two weeks centered on literature, art and music. Special guests will be coming forward to share their talents in all the fields. Then we will blast off into SPACE! Learning about the solar system and all it's mysteries.

Keep warm and enjoy all the new year has to offer!!

Minutes of the November Congregation Council Meeting

St. Luke Lutheran Church Minutes of the Congregation Council Meeting November 20, 2025

Councilors in attendance: Fawn DeMello, Pastor Heidi Johnston, Mark Larson, John Perkins, Brad Dame, Alan Nordquist, Janis Vajdos

Congregation member in attendance: Leigh Sammons (filling in for Erica Sullivan)
Excused absences: Erica Sullivan, Pat Robbins, Kellie August

Recording secretary (via telephone): Liese Zitzkat

The meeting was called to order at 6:02 PM by Council President Fawn DeMello.

Devotions

- Brad Dame led devotions.
- December devotions will be led by Alan Nordquist.

Approval of Agenda

- Motion: The motion was made (Fawn DeMello) and seconded to approve the agenda for tonight. There was no discussion. The motion carried.

Approval of October 16, 2025 Minutes

- Motion: The motion was made (Fawn DeMello) and seconded to approve the October 16, 2025 Council minutes. There was no discussion. The motion carried.

President's Remarks

- The Executive Report was sent to the Council.
- All councilors are encouraged to attend the Adult Forum on November 23rd after worship. Pastor Mark Lingle and Pastor Heidi will be talking about the potential internship.
- The December 11th 6:00 PM Council Meeting will take place via Zoom. The topic will be the 2026 budget.
- Annual Reports are due to the Parish Administrator by December 31st, with the exception of the Bookkeeper and Treasurer (budget).
- There will be a Special Budget Meeting on January 8th at 6:00 PM via Zoom if the 2026 budget has not yet been completed.
- The Annual Meeting is scheduled for January 25, 2026 immediately following the worship service (approximately 11:00 AM).

Church Members' Comments/Concerns

- None

Minutes of the November Congregation Council Meeting

Financial Reports

- Please refer to the Treasurer's Report, Balance Sheet, and Consolidated Fund Activity Report documents.
- **Motion:** The motion was made (Alan Nordquist) and seconded that the Congregation Council authorize the Treasurer to roll over the 9-month certificate of deposit with Thrivent Bank maturing on December 13, 2025 to a new one-year (or less) certificate of deposit. Following discussion, the motion carried.
- **Motion:** The motion was made (Alan Nordquist) and seconded to accept the Audit Report provided by the Audit Team. Following discussion, the motion carried.
- **Motion:** The motion was made (Alan Nordquist) and seconded that the Congregation Council approve a change to the hosting service for Church Windows from RDI/VOS to Summit. Following discussion, it was decided that more research is needed. The motion was rejected.

Pastor's Report

- Please refer to the Pastor's Report document.

Purpose Teams Reports

- Evangelism
 - Please refer to the Evangelism Report document.
- Fellowship
 - Please refer to the Fellowship Report document.
- Lifelong Learning
 - Please refer to the Lifelong Learning Report document.
- Outreach Ministry
 - Please refer to the Outreach Report document.
- Worship
 - Please refer to the Worship Team Activity Summary and Director of Music Council Report documents.

Support Team Reports

- Communications
 - Please refer to the Communications Report document.
- Facilities
 - Please refer to the Facilities Report document.
- Parish
 - Please refer to the Church Office Report document.
- People
 - Please refer to the People Support Report document.
 - Motion: The motion was made (Mark Larson) and seconded to accept the proposed revisions to the job description for Director of Grins and Giggles Playschool, including the name change from Playschool to Preschool. Following discussion, the motion carried.
 - Motion: The motion was made (Mark Larson) and seconded to accept the proposed revisions to the job description for Head Teacher of Grins and Giggles Playschool, including the name change from Playschool to Preschool. Following discussion, the motion carried.

Minutes of the November Congregation Council Meeting

- Motion: The motion was made (Mark Larson) and seconded to accept the proposed revisions to the job description for Assistant Teacher of Grins and Giggles Playschool, including the name change from Playschool to Preschool. Following discussion, the motion carried.

Motion to Accept All Reports

- Motion: The motion was made (Fawn DeMello) and seconded to accept all reports. There was no discussion. The motion carried.

New Business

- The 2026 budget was discussed.

Old Business

- None

Items for Follow-Up Prior to Next Meeting – December 11, 2025

- Annual Reports for ministries and staff

Motion to Adjourn and Closing Prayer – Lord's Prayer

- Motion: The motion was made (Fawn DeMello) and seconded to adjourn the meeting. There was no discussion. The motion carried.
- The meeting adjourned at 8:21 PM, followed by the Lord's Prayer.

Respectfully submitted,

Liese M. Zitzkat, Recording Secretary

Treasurer's Report for November 2025

St. Luke Lutheran Church
Treasurer's Report for Month Ending
November 30, 2025

December 13, 2025

Income Summary

Pledged offerings for the month of November were approximately \$4.4K below the monthly budget, resulting in pledged offerings for the year being approximately \$7.7K below the YTD budget. Grace Giving for the month of November was above the monthly budget by approximately \$1.8K, and again exceeded (in addition to October) our typical monthly grace giving. With all offering sources combined, our YTD total offerings are approximately \$10.9K below the YTD budget.

Grins & Giggles income for the month of November was almost exactly equal to the monthly budget, resulting in YTD Grins & Giggles income as of the end of November being approximately \$6.9K greater than the YTD budget.

We also earned \$425 in investment income in the month of November, primarily from our two Thrivent CD's.

With all budgeted income sources combined, our actual total budgeted income for the month of November was \$2.4K less than the monthly budget, making the YTD total budgeted income \$2.4K less than the YTD budget.

A summary of the YTD November 2025 budgeted income is provided in the table below:

Account Name	Period Activity	Monthly Budget	YTD Balance	Budget YTD	Annual Budget	Annual Budget Remaining
Pledges	23,575.60	28,000.00	301,339.58	309,000.00	338,147.00	36,807.42
Grace Giving	6,339.41	4,500.00	44,928.98	48,500.00	54,000.00	9,071.02
Loose Cash Offering	662.00	300.00	4,567.55	3,300.00	3,600.00	(967.55)
Special Envelopes	0.00	500.00	520.00	1,500.00	2,600.00	2,080.00
Offerings	\$30,577.01	\$33,300.00	\$351,356.11	\$362,300.00	\$398,347.00	\$46,990.89
Building Use	315.63	208.00	3,158.15	2,288.00	2,500.00	(658.15)
Structures Income	\$315.63	\$208.00	\$3,158.15	\$2,288.00	\$2,500.00	(\$658.15)
Investments Div/Interest	425.06	225.00	2,730.19	1,775.00	2,000.00	(730.19)
Other Income	\$425.06	\$225.00	\$2,730.19	\$1,775.00	\$2,000.00	(\$730.19)
Grins & Giggles Income - Donations	0.00		391.20			
Grins & Giggles Income-Tuition	8,075.00	8,100.00	83,655.00	77,750.00	85,850.00	2,195.00
Grins & Giggles Income-Registration fees	50.00	0.00	1,035.00	650.00	700.00	(335.00)
Total Grins and Giggles Income	\$8,125.00	\$8,100.00	\$85,081.20	\$78,400.00	\$86,550.00	\$1,860.00
Total Budgeted Income	\$39,442.70	\$41,833.00	\$442,325.65	\$444,763.00	\$489,397.00	\$47,462.55

In addition to budgeted income, there was also \$15,302 of unbudgeted income in the month of November. This included one very generous donation to the long-term contingency fund, and multiple smaller, but significant, donations to the Memorial Fund, Pastor's Discretionary Fund, and the Good Samaritan Fund.

Expense Summary

Total Budgeted YTD Expenses of \$446,286.78 is greater than the YTD budget of \$444,515.00 by \$1771.78 as of the end of November. November budgeted expenses were greater than the monthly budget by \$299.81.

Treasurer's Report for November 2025

Grins & Giggles YTD Expenses of \$80,919.18 is greater than the budget of \$77,297.00 by \$3622.18, mostly due to Head Teacher salaries.

Net Results: As of the end of November 2025 we have an Actual YTD Total Income of \$557,663.03, and Total Expenses of \$482,537.86, resulting in a difference of \$75,125.17. A high-level year to date summary is in the tables below.

Account Name	Period Activity	Monthly Budget	YTD Balance	Budget YTD	Annual Budget	Annual Budget Remaining
Total Budgeted Income	\$39,442.70	\$41,833.00	\$442,325.65	\$444,763.00	\$489,397.00	\$47,462.55
TOTAL Budgeted Expense	\$36,790.81	\$36,491.00	\$446,286.78	\$444,515.00	\$506,779.00	\$60,745.86
Budgeted Income/Expense Difference	\$2,651.89	\$5,342.00	(\$3,961.13)	\$248.00	(\$17,382.00)	(\$13,283.31)
Total Grins and Giggles Income	\$8,125.00	\$8,100.00	\$85,081.20	\$78,400.00	\$86,550.00	\$1,860.00
Total Grins & Giggles Expense	\$8,630.97	\$6,594.00	\$80,919.18	\$77,297.00	\$87,130.00	\$6,363.86
Grins & Giggles Income/Expense Difference	(\$505.97)	\$1,506.00	\$4,162.02	\$1,103.00	(\$580.00)	(\$4,503.86)
Total Income	\$54,744.51	\$41,833.00	\$557,663.03	\$444,763.00	\$505,255.00	\$63,320.55
Total Expense	\$44,890.68	\$36,491.00	\$482,537.86	\$444,515.00	\$506,779.00	\$60,745.86
Total Income/Expense Difference	\$9,853.83	\$5,342.00	\$75,125.17	\$248.00	(\$1,524.00)	\$2,574.69

Other Treasurer Activity:

- Reviewed bi-weekly payroll
- Reviewed monthly bank reconciliation
- Started building budget for 2026

Respectfully Submitted,
Alan Nordquist
Treasurer

Consolidated Fund Activity Report November 2025

St Luke Lutheran Church - Gales Ferry CT Consolidated Fund Activity Report for November 2025

Thursday,

Account Name	Beg Balance	Receipts	Disbursements	Transfers/JE's	End Balance
<i>Administrative-Dedicated Balance</i>					
Intransit Items Balance	945.13	-	945.13	-	0.00
Sabbatical Fund Balance	9,750.00	-	-	-	9,750.00
Special Gifts Balance	225.01	-	-	-	225.01
Staff Development Balance	3,886.15	-	91.35	-	3,794.80
<i>Building Fund Balance</i>					
General Building Fund	22,362.55	10.00	-	-	22,372.55
Sanctuary Renovations	4,562.36	10.00	-	-	4,572.36
<i>Discretionary Gifts Balance</i>					
Camp Calumet Scholarships	700.00	-	-	-	700.00
Council Discretionary Fund	3,107.20	-	-	-	3,107.20
Good Samaritan Fund	6,707.34	625.00	2,451.92	-	4,880.42
Pastors' Discretionary	12,976.99	1,500.00	1,154.74	-	13,322.25
Embellish (Bells of Fire) Fund	1,507.43	-	-	-	1,507.43
<i>Facilities Support-Dedicated</i>					
Memorial Garden Balance	3,675.85	350.00	20.00	-	4,005.85
<i>Family Ministry-Dedicated</i>					
Family Ministry Activities	208.00	-	-	-	208.00
<i>Fellowship-Dedicated Balance</i>					
Fellowship Furnishings	6,021.56	-	-	-	6,021.56
Fellowship Special Events	2,534.64	750.00	966.30	-	2,318.34
Flowers Balance	(212.08)	50.75	-	-	(161.33)
General Operating Fund Balance	41,582.13	39,442.70	36,790.81	-	44,234.02
<i>Life Long Learning-Dedicated</i>					
Ecumenical VBS Balance	252.58	-	-	-	252.58
Grins & Giggles Donations	248.02	-	-	-	248.02
Women's Retreat Balance	236.12	-	-	-	236.12
Long Term Contingency Fund	4,052.68	10,010.00	-	-	14,062.68
Memorial Fund Balance	6,902.81	1,223.50	173.51	-	7,952.80
<i>Ministry-Dedicated Balance</i>					
Meal Center Balance	1,260.00	-	401.78	-	858.22
Net Fixed Asset Fund Balance	1,918,224.00	-	-	-	1,918,224.00
<i>Special Programs Balance</i>					
Great Lakes Scrip Program	2,543.06	672.56	1,597.40	-	1,618.22
Unrestricted Gifts Fund Balance	93,988.99	-	297.74	-	93,691.25
<i>Worship-Dedicated Balance</i>					
Handbell Program Fund	787.91	-	-	-	787.91
Special Music Balance	2,544.61	100.00	-	-	2,644.61
<i>Youth-Dedicated Balance</i>					
ELCA Youth Gathering	5,960.48	-	-	-	5,960.48
Youth Mission Trip Balance	522.15	-	-	-	522.15
Total	<u>\$2,158,063.67</u>	<u>\$54,744.51</u>	<u>\$44,890.68</u>	<u>\$0.00</u>	<u>\$2,167,917.50</u>

The Visit of the Magi

On coming to the house, they saw the child with his mother Mary, and they bowed down and worshiped him. Then they opened their treasures and presented him with gifts of gold and of incense and of myrrh. Matthew 2:11 (NIV)



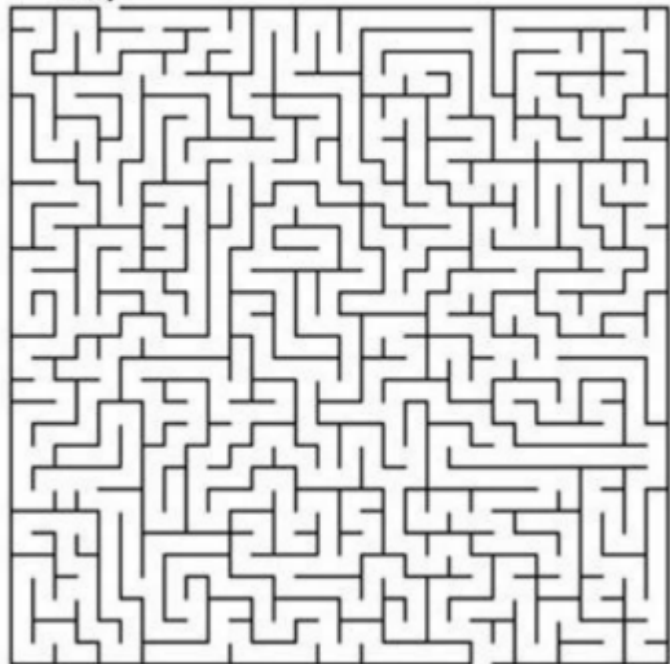
BALTHASAR
FEAST
HOMAGE
MAGI

NIGHT
TWELFTH
BETHLEHEM
FRANKINCENSE
JESUS
MANGER
OFFERING
WISE MEN
CAMELS
GASPAR
KING
MARY

STAR
CHILD
GIFTS
KING HEROD
MELCHIOR
THREE
EPIPHANY
GOLD
LIGHT
MYRRH
TREASURE

Z L I Y Z N R T W W Y M Z C I R Q
Q S V V B E T H L E H E M A T D M
V T V Z F G M A G I C F A M P N J
N A G I F T S F B H T H R E E F T
H R Y G A S P A R N D C X L J T N
H J E P I P H A N Y R N S S V K B
O F R B A L T H A S A R Y G K I J
M E T W E L F T H L I G H T I N C
A A M A N G E R Q E H N A N K G L
G S T G M U R U G H B H M I I K W
E T O F F E R I N G U Y J G N Y W
Y W C P G K K G O L D E E H G X I
E O X R A M Y R R H V I S T H M S
F R A N K I N C E N S E U S E M E
K N K O D C H I L D D I S F R A M
Z Z E J Z O M E L C H I O R O R E
K I T R E A S U R E B Q Z O D Y N

Can you help the wise men follow the star to find Jesus?



START



Visit of the Kings Scramble

Unscramble the letters to make words
having to do with Epiphany

- etwatMh
- dHeor
- Bmheethel
- aasCpr
- lzaaarhBt
- Mohlcrie
- dolg
- yhrmm
- enifrskenca
- atse
- mgia
- rehet
- knisg
- mecia
- nsme iew



- Matthew
- Herod
- Bethlehem
- Caspar
- Balthazar
- Melchior
- gold
- myrrh
- three
- frankincense
- east
- Magi
- wise men
- camel
- kings

Prayer List

Pray for healing:

Madysen Lent (friend of Elaine Lettiere)
Shannon Tenny (great niece of Evelyn Monk)
Steve Roman (Brother of Sandy Wimmermark)
Pam Roman (sister-in-law of Sandy Wimmermark)
Crystal Dame
Daniel Miller (son of Kathy West)
Dylan Tyler (grandson of Betty Caruso)
Elaine Remondi-Simpson
Dawn Nienow (sister of Cathy Hanson)
Vicki Breuell (friend of the Nelsons)
Mandy Kelly (friend of the Wuesthoffs)

Dick Wimmermark
Linda Snarski (friend of Elaine Remondi-Simpson)
Billy Johnson (friend of the Steinnagels)
Kevin Ames (friend of the Steinnagels)
Livingston Carroll (brother of Patricia Carroll-French)
Travis Turner
Linda Lovewell (former member)
Doris Remondi (mother of Elaine Remondi-Simpson)
Kasey Peek
Claudia Sanchez (sister of Rut Sanchez)
Chip Moran
Donna (friend of Leigh Sammons)
Linda Wilkinson
Marie
Joy Elisabeth (daughter of Patricia Carroll-French)
Sandy (friend of Patricia Carroll-French)

Pray for those who are Grieving:

Pray for active duty military:

Christopher Bushy (nephew of Fawn DeMello)
Nicholas Tavernay (grandson of Althea)
Caleb
Henry Yanaway
Christian Conrad
Adrian Estrella
Martin Wuesthoff
Andy Sammons
Derek Raymond
Patrick Wimmermark

Pray for homebound, those receiving long-term care, & their caregivers:

Nick Iario (relative of Kathleen Bartkowski)
Kathy Dame
Fred Launer
Pauline Wanner
Bob Chernansky
Jenny Waller
Lynn Minichino

Pray for those with other concerns:

the ELCA AMMPARO Migrant Ministry
The St. Luke Prayer Shawl Ministry



Scroll Deadline: Third Monday of the Month

The deadline for the Scroll is the third Monday of each month.

Articles may be submitted as hard-copy or via e-mail to communications@stlukegf.org.

DEADLINE

Add a Prayer

If you would like to add a prayer request to the Weekly, please complete the Prayer Request form on the reverse side of the yellow Connections form.

Leave the form in the pew and the ushers will collect them and turn them in to the church office. You can also add a prayer request by calling the office at 860-464- 7897

January Celebrations

Birthdays:

Ian Enslow	01/11
Logan Enslow	01/11
Cathy Frost	01/31
Oliver Miller	01/24
Al Nordquist	01/21
Leigh Sammons	01/13
Ginny Sturm	01/06
Travis Turner	01/08

Wedding Anniversaries: (# of Years Married)

Kellie & Eric August	01/22 (32)
John Felty & Katie Launer-Felty	01/08 (21)

Baptismal Birthdays:

Dame, Bradley	01/28/1973
Donovan, Regina	01/19/1969
Enslow, Ian	01/20/2019
Enslow, Logan	01/20/2019
Goodrich, David	01/??/1994
Lettiere, Elaine	01/18/1970
Vajdos, Nikolas	01/04/2009

DID WE MISS YOUR CELEBRATION?
PLEASE CALL THE CHURCH OFFICE,
860-464-7897, OR E-MAIL
PARISHADMIN@STLUKEGF.ORG, SO WE CAN
BE SURE TO HONOR YOUR SPECIAL DAY.

ST. LUKE--SCHEDULE TO SERVE - January 2026

Date	Greeters	Ushers	Altar Guild	Lay Readers	Communion Deacons	Acolytes	Tech Team	Assisting Ministers
1/4								
9:30	Edna Johnson	Ray Heller & John Perkins	Cathy Hanson	Liese Z.	Cyndi Arnold & Pat Robbins	Everett Steele & Nate Dame	Roni & Al	Lisa McCabe
1/11								
9:30	Joan Lambert	Dennis Sindel & Dave Goodrich	Penny Heller	Fawn D.	Jerry Swope & Charlie Anderson	Camille Felty & Everett Steele	Brad & Kristian	Felix Vajdos
1/18								
9:30	Sue Bibeau	Mark & Louise Larson	Sue Anderson	Katie	Diane Hansen & Camille Felty	Alexander Nicki & Nate Dame	Dave & Brad	Jacqueline Leone
1/25								
4:00	Joanne Erickson	Al Nordquist & John Robbins	Linda Martin	Robert N.	Leigh Sammons & Nancy Rupert	Nate Dame & Everett Steele	Jim & Al	Erica Sullivan

This schedule compiled as of 12/30/2025; Please check the bulletin board by Fellowship Hall for updates.

Church Calendar of Events

JANUARY 2026

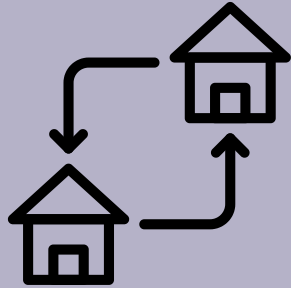
*Community Group

Music Rehearsals:

Monday 5:00pm - Grace Notes
Tuesday 6:00pm - The Belles
Wednesday 9:00am - EmBellish
Wednesday 7:00pm - JuBELLation

SUN	MON	TUE	WED	THU	FRI	SAT
28	29	30	31	1 9:00am Grins & Giggles	2 9:00am Grins & Giggles	3 10:00am OA* 7:00pm AA*
4 9:30am In-person & Livestream worship 2:30pm New London Meal Center 5:30pm Girl Scout Troop Meeting*	5 9:00am Grins & Giggles 5:00pm Grace Notes 7:00pm AA*	6 9:00am Grins & Giggles 9:30am OA* 6:00pm The Belles 7:00pm Senior Choir	7 9:00am EmBellish 9:00am Grins & Giggles 11:00am Picnic in the Narthex 12:15pm KIDSTEPS Sarah Inc.*	8 9:00am Grins & Giggles	9 9:00am Grins & Giggles	10 10:00am Girl Scouts Cookie Rally 10:00am OA* 10:30am Women's Group 7:00pm AA*
11 Lifelong Learning Meeting 9:30am In-person & Livestream worship	12 9:00am Grins & Giggles 5:00pm Grace Notes 7:00pm AA*	13 9:00am Grins & Giggles 9:30am OA* 6:00pm Executive Planning Team 6:00pm The Belles 7:00pm Senior Choir	14 9:00am EmBellish 9:00am Grins & Giggles 11:00am Picnic in the Park 12:15pm KIDSTEPS Sarah Inc.* 7:00pm JuBellation	15 9:00am Grins & Giggles 6:00pm CONGREGATION COUNCIL	16 9:00am Grins & Giggles	17 10:00am OA* 7:00pm AA*
18 9:30am In-person & Livestream worship	19 SCROLL DEADLINE 9:00am Grins & Giggles 5:00pm Girls Scouts 5:00pm Grace Notes 7:00pm AA*	20 9:00am Grins & Giggles 9:30am OA* 6:00pm The Belles 6:30pm Girl Scout Leader Meeting* 7:00pm Senior Choir	21 11:00am Picnic in the Park 4:00pm Christmas Eve Family Service 8:00pm Christmas Eve Late Service	22 9:00am Grins & Giggles	23 9:00am Grins & Giggles	24 10:00am OA* 10:30am Women's Group 7:00pm AA*
25 Kids' Corner Potluck Luncheon 9:30am In-person & Livestream worship	26 9:00am Grins & Giggles 5:00pm Grace Notes 7:00pm AA*	27 9:00am Grins & Giggles 9:30am OA* 6:00pm The Belles 7:00pm Senior Choir	28 9:00am EmBellish 9:00am Grins & Giggles 11:00am Picnic in the Narthex 12:15pm KIDSTEPS Sarah Inc.*	29 9:00am Grins & Giggles	30 9:00am Grins & Giggles	31 10:00am OA* 12:00pm Fellowship Hall Rental 7:00pm AA*

*Please inform the Church
Office of any address,
telephone number, or email
changes. Email changes to
parishadmin@stlukegf.org or
call 860-464-7897.*

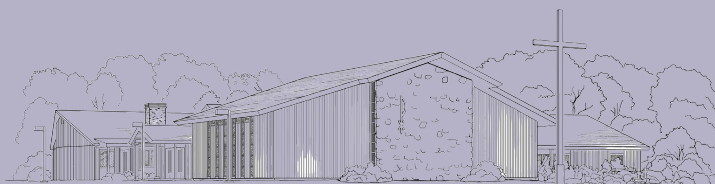


St. Luke Lutheran Church

1830 Route 12
Gales Ferry, CT 06335
Phone: 860-464-7897
Fax: 860-464-7742
Website: stlukegf.org

*A member of the Evangelical Lutheran
Church in America*

*A Spirit Driven Christian
Community of Engaged
Disciples, Called to Serve,
Love and Forgive.*



St. Luke Lutheran Church

1830 Route 12
Gales Ferry, CT 06335
Ph. 860-464-7897
Fax: 860-464-7742
Emergency #: 860-617-9343
www.stlukegf.org

Office Hours:

Monday – Thursday
9 am to 2:30 pm
Friday
CLOSED

LEADERSHIP TEAM

Pastor Heidi Johnston
pastorheidi@stlukegf.org
Emergency #: 860-381-0884
www.stlukegf.org
Lead Pastor

Gina Marie Williams
gina@stlukegf.org
*Director of Music and
Worship Technology*

Diane Hansen
diane@stlukegf.org
Bookkeeper

Rachel Goodman
parishadmin@stlukegf.org
Parish Administrator

Kathleen Bartkowski
Organist/Accompanist

Katie Kenney
communications@stlukegf.org
Communications Coordinator

Melissa Spera
Custodian

OFFICERS OF THE CONGREGATION

Fawn DeMello
fdemello@comcast.net
President

Mark Larson
mwl Larson@yahoo.com
Vice-President

Alan Nordquist
treasurer@stlukegf.org
Treasurer